

22280 E. PRICE DRIVE  
CLINTON TWP., MICHIGAN

SPECIAL USE FOR SALE  
30,691 Square Feet Available



**SIGNATURE  
ASSOCIATES**  
KNOW SIGNATURE | KNOW RESULTS



## PROPERTY FEATURES

- 30,691 square feet available
- Great for Charter School or Assisted Living
- Maintenance garage is 2,752 square feet
- Located on 7.077 acres
- Zoned R-3
- Sale Price: \$2,600,000 (\$84.72/sq. ft.)



For more information, please contact:

**CHRIS MONSOUR**  
(248) 948 0107  
cmonsour@signatureassociates.com

**SIGNATURE ASSOCIATES**  
One Towne Square, Suite 1200  
Southfield, MI 48076  
www.signatureassociates.com

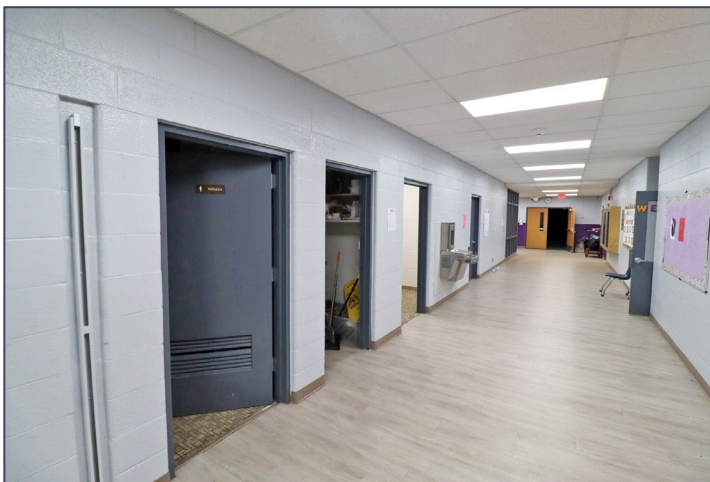
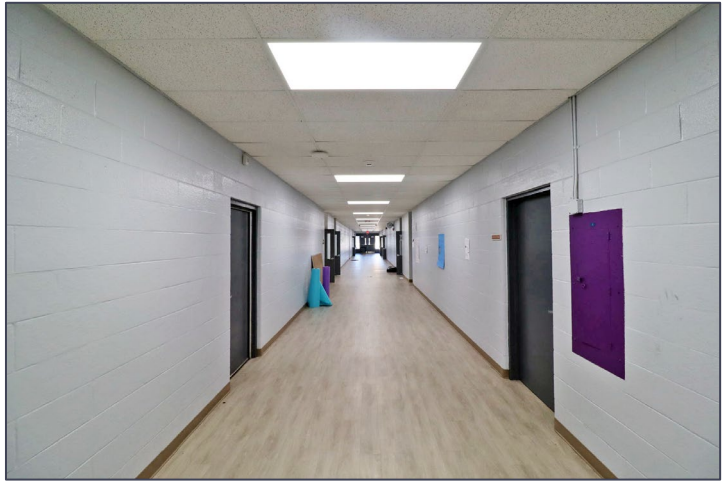
Information is subject to verification and no liability for errors or omissions is assumed. Price is subject to change and listing withdrawal.

# 22280 E. Price Drive – Clinton Twp., Michigan

## Special Use For Sale

30,691  
Square Feet  
AVAILABLE

### Interior Photos



For more information, please contact:

**CHRIS MONSOUR**  
(248) 948 0107  
[cmonsour@signatureassociates.com](mailto:cmonsour@signatureassociates.com)

**SIGNATURE ASSOCIATES**  
One Towne Square, Suite 1200  
Southfield, MI 48076  
[www.signatureassociates.com](http://www.signatureassociates.com)

Information is subject to verification and no liability for errors or omissions is assumed. Price is subject to change and listing withdrawal.

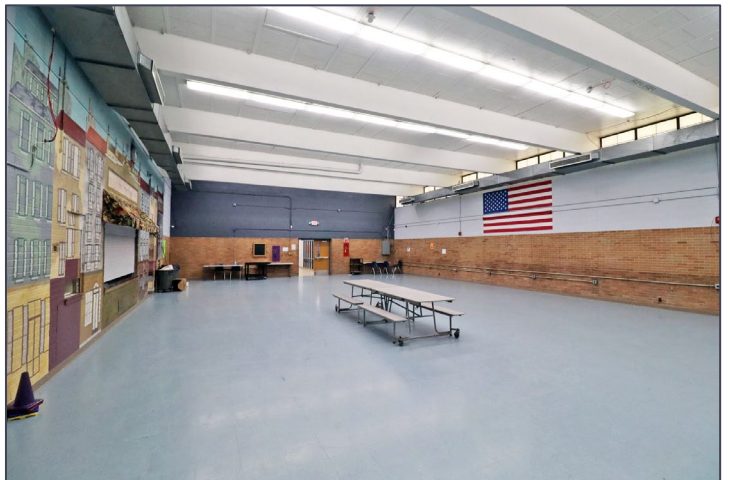
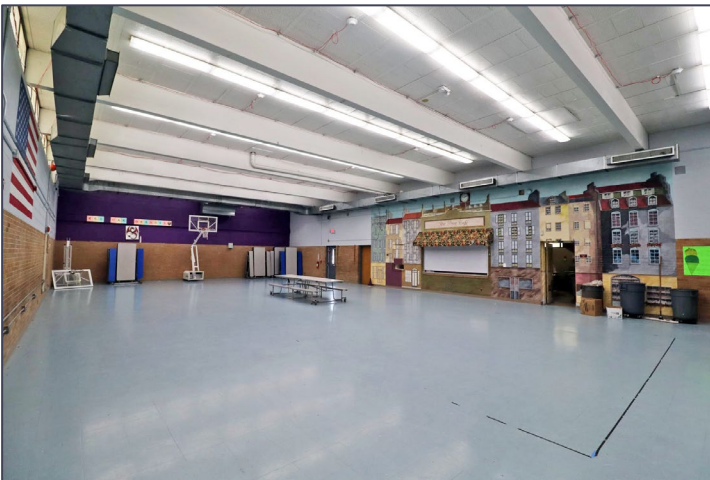


# 22280 E. Price Drive – Clinton Twp., Michigan

## Special Use For Sale

30,691  
Square Feet  
AVAILABLE

### Interior Photos



For more information, please contact:

**CHRIS MONSOUR**  
(248) 948 0107  
[cmonsour@signatureassociates.com](mailto:cmonsour@signatureassociates.com)

**SIGNATURE ASSOCIATES**  
One Towne Square, Suite 1200  
Southfield, MI 48076  
[www.signatureassociates.com](http://www.signatureassociates.com)

Information is subject to verification and no liability for errors or omissions is assumed. Price is subject to change and listing withdrawal.

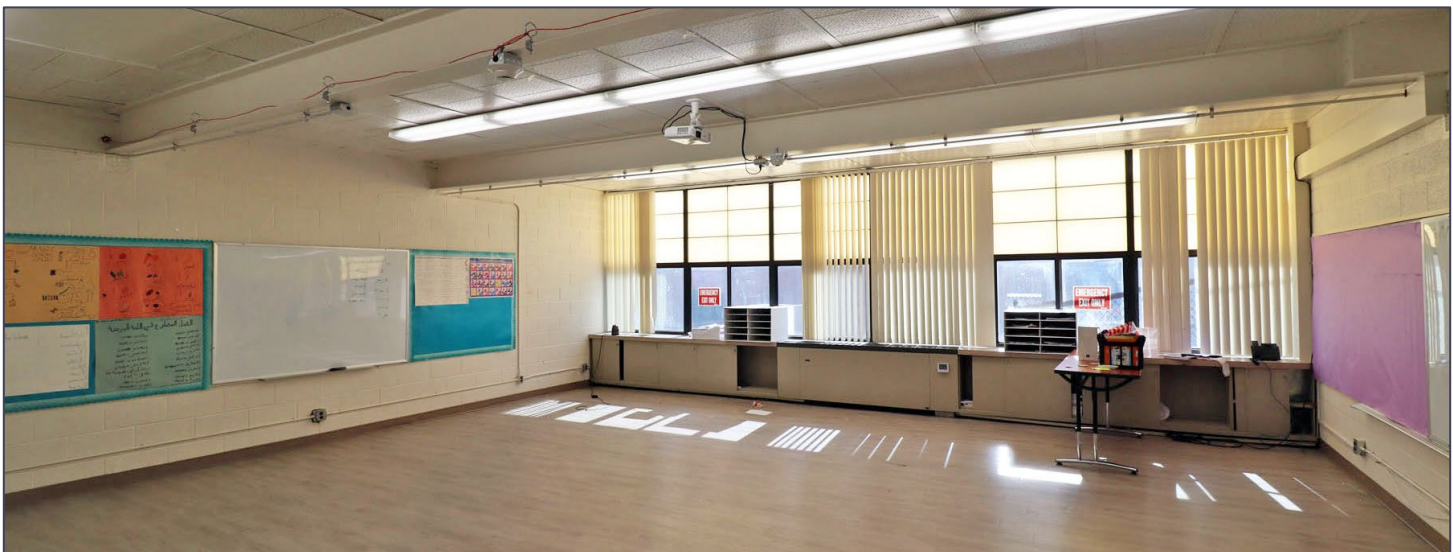
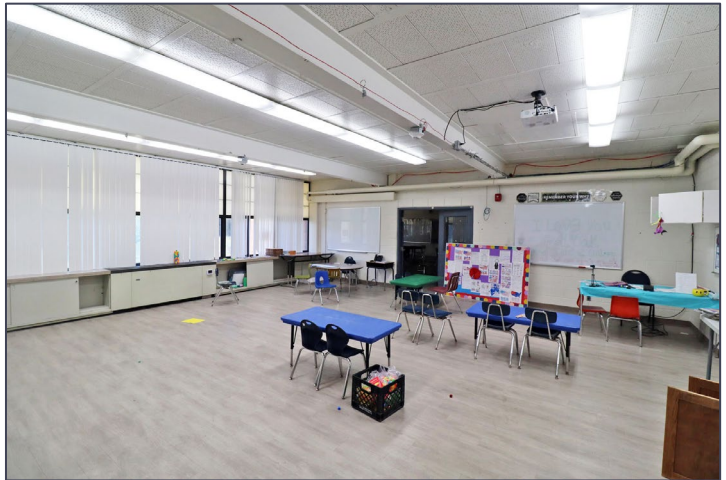


# 22280 E. Price Drive – Clinton Twp., Michigan

## Special Use For Sale

30,691  
Square Feet  
AVAILABLE

### Interior Photos



For more information, please contact:

**CHRIS MONSOUR**  
(248) 948 0107  
[cmonsour@signatureassociates.com](mailto:cmonsour@signatureassociates.com)

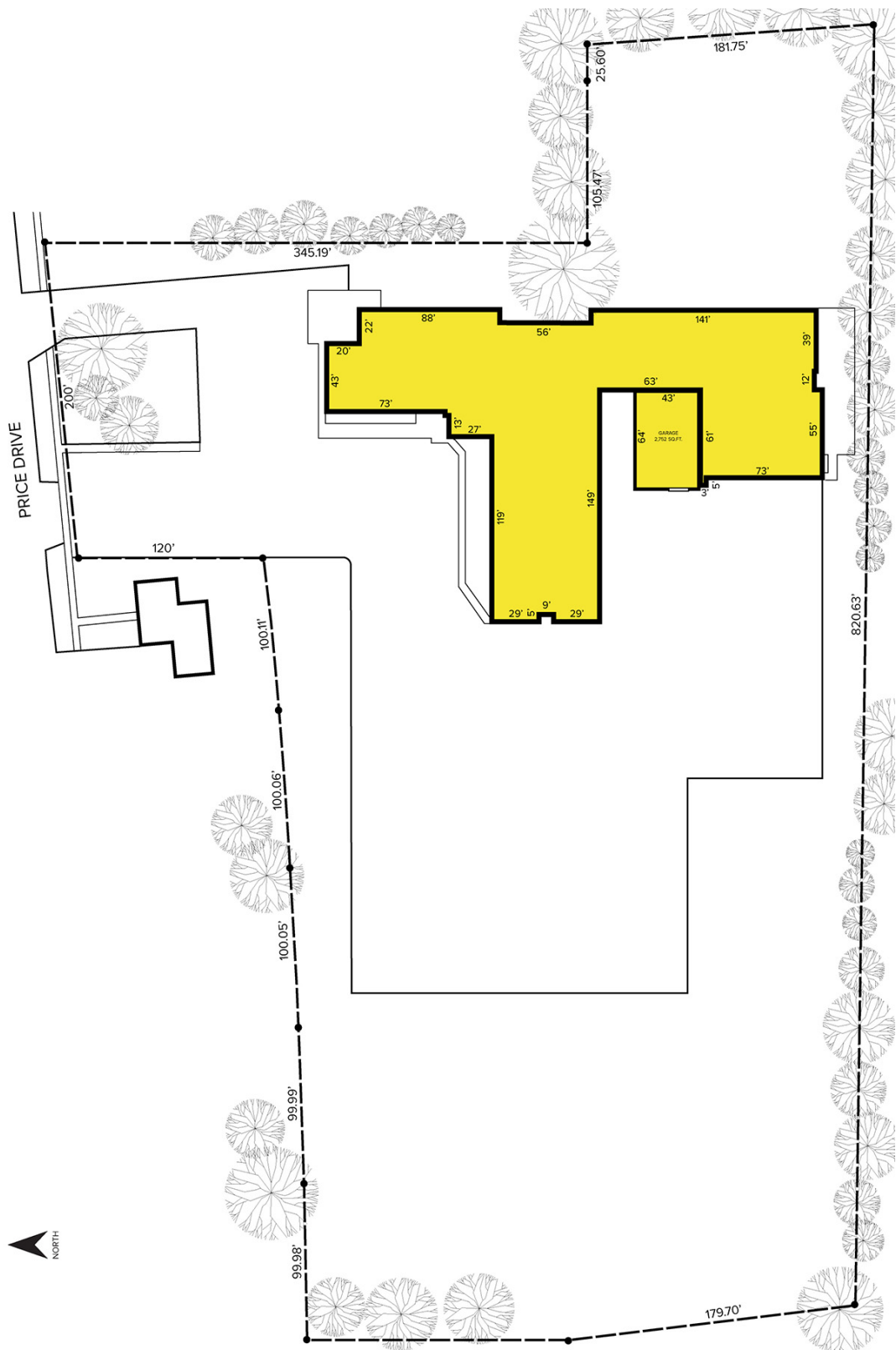
**SIGNATURE ASSOCIATES**  
One Towne Square, Suite 1200  
Southfield, MI 48076  
[www.signatureassociates.com](http://www.signatureassociates.com)

Information is subject to verification and no liability for errors or omissions is assumed. Price is subject to change and listing withdrawal.

22280 E. Price Drive – Clinton Twp., Michigan  
Special Use For Sale

30,691  
Square Feet  
AVAILABLE

Site Plan



For more information, please contact:

**CHRIS MONSOUR**  
(248) 948 0107  
cmonsour@signatureassociates.com

**SIGNATURE ASSOCIATES**  
One Towne Square, Suite 1200  
Southfield, MI 48076  
www.signatureassociates.com



# 22280 E. Price Drive – Clinton Twp., Michigan

## Special Use For Sale

30,691  
Square Feet  
AVAILABLE

Aerial



For more information, please contact:

**CHRIS MONSOUR**  
(248) 948 0107  
[cmonsour@signatureassociates.com](mailto:cmonsour@signatureassociates.com)

**SIGNATURE ASSOCIATES**  
One Towne Square, Suite 1200  
Southfield, MI 48076  
[www.signatureassociates.com](http://www.signatureassociates.com)

Information is subject to verification and no liability for errors or omissions is assumed. Price is subject to change and listing withdrawal.