

FULLY BUILT-OUT MEDICAL CONDO



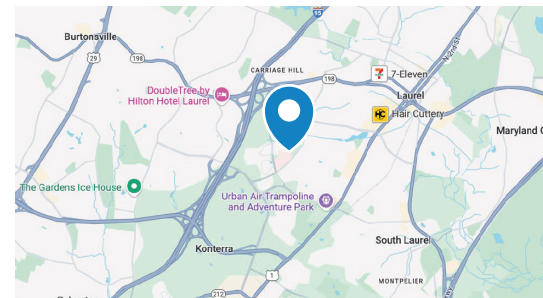
Turn-Key| Third Floor| Easy Elevator Access

- 1,438, Third Floor, Class B Medical Condo Center of heavily medical tenanted condo park Free, ample surface parking just a ½ mile from MD 206, which connects to major roads such as the intercounty connector and I-95
- 0.1 mile from Laurel Medical Center
- Ample Free service Parking
- Physician Community Built-In Referral Sources

Condo Features

- Move-In Ready for Medical Users
- Medical Grade Finishes
- Easily modified for any medical specialty or office user.
- Third Floor Easy Access from Elevator

Condo Highlights



Less than 1 Mile
from Laurel
Medical Center



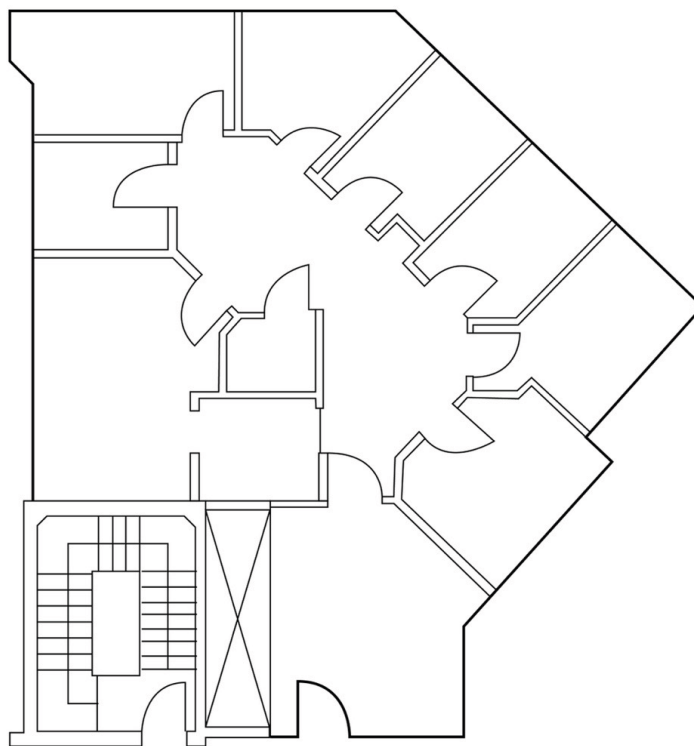
Ample Free
Surface Parking



Physician
Community Built-In
Referral Sources



1,438 RENTABLE SQUARE FEET



For more information or to schedule a property tour, please contact:

LUKE POULOS: 301.395.7108 | lpoulos@hprgrealty.com

CONNOR EBEL: 240.204.3391 | cebel@hprgrealty.com

HPRGrealty.com

HPRG HEALTH-PRO+
REALTY GROUP

This document/email has been prepared by HPRG for advertising and general information only. HPRG makes no guarantees, representations or warranties of any kind, expressed or implied, regarding the information including, but not limited to, warranties of content, accuracy and reliability. Any interested party should undertake their own inquiries as to the accuracy of the information. HPRG excludes unequivocally all inferred or implied terms, conditions and warranties arising out of this document and excludes all liability for loss and damages arising there from. This communication is not intended to cause or induce breach of an existing listing agreement.

