

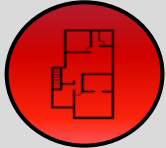
# 555 PARK OFFICE BUILDING

555 PARK STREET, ST. PAUL, MN



KRAUS-ANDERSON®  
Realty Company

## SPACE AVAILABLE



Multiple suites available –  
see site plan

## OFFICE BUILDING



50,215 SF office building  
with cafeteria

## LOCATION



Across Park Street from  
Bethesda Hospital

## PARKING



We offer complimentary  
structured parking.



## AREA AMENITIES



15 minute drive to the Minneapolis-  
St. Paul International Airport



Quick and easy access to  
Interstate 94



Close proximity to light rail connecting  
Minneapolis, U of M, and St. Paul



One block from the Capitol



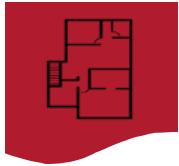


# Aerial View



555 PARK OFFICE BUILDING  
ST. PAUL, MN

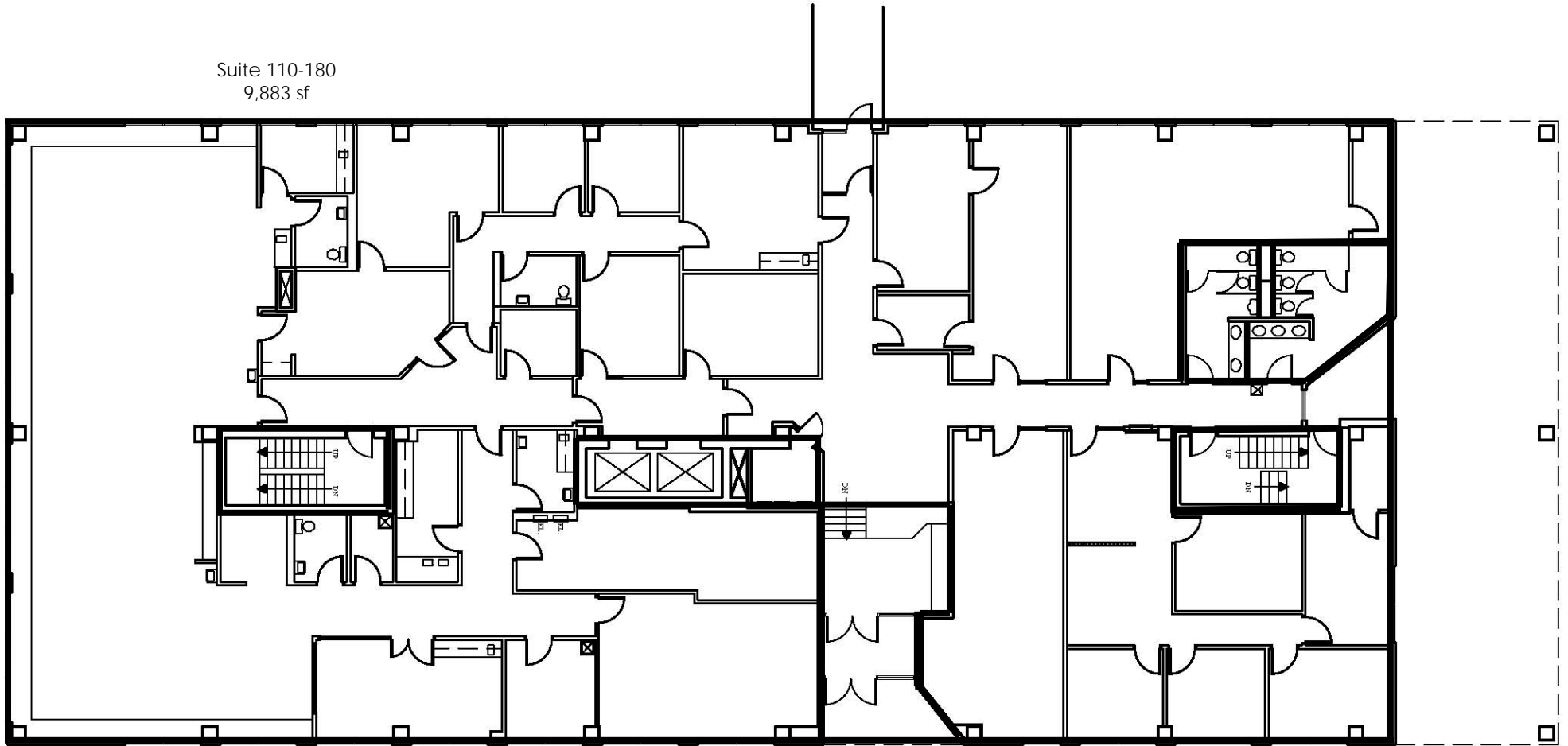


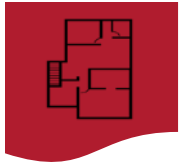


# Site Plan

## 1ST FLOOR

Suite 110-180  
9,883 sf



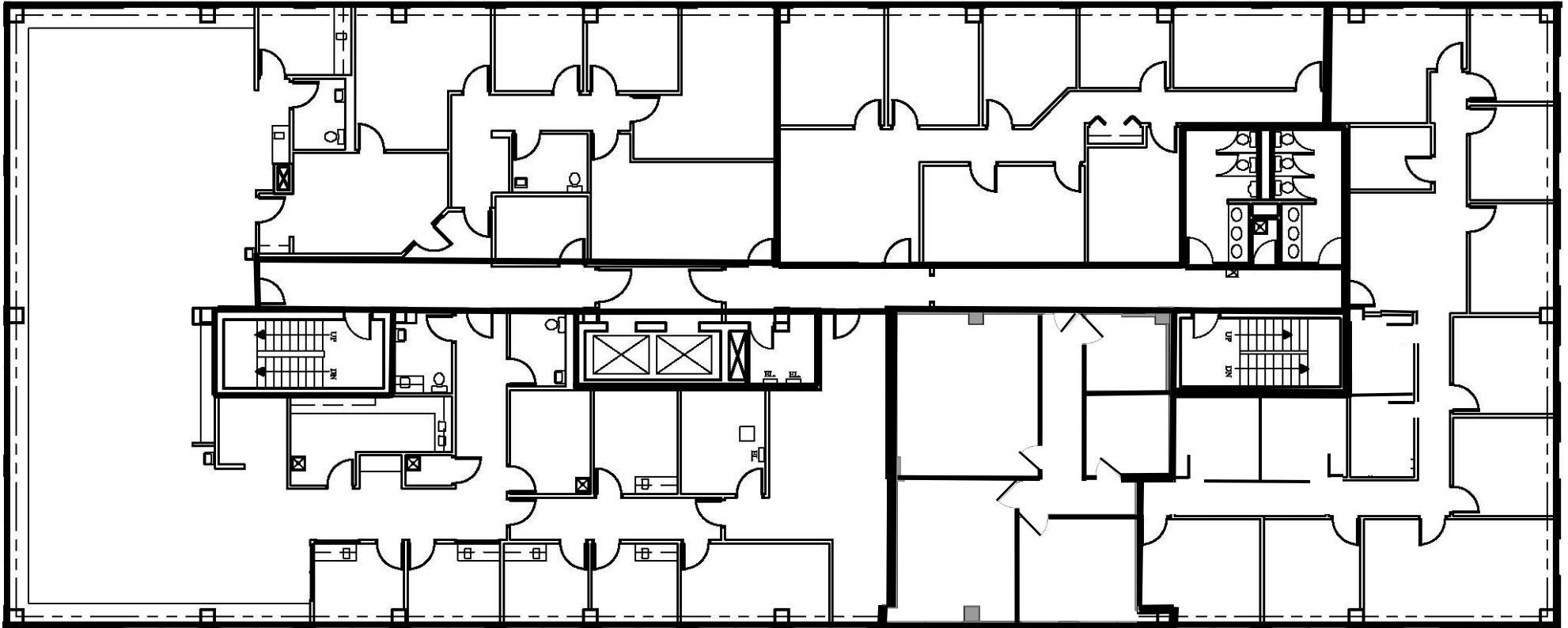


# Site Plan

## 2ND FLOOR

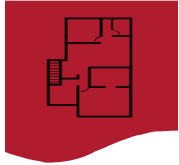
Suite 230  
7,262 sf

Suite 210  
1,968 Sf



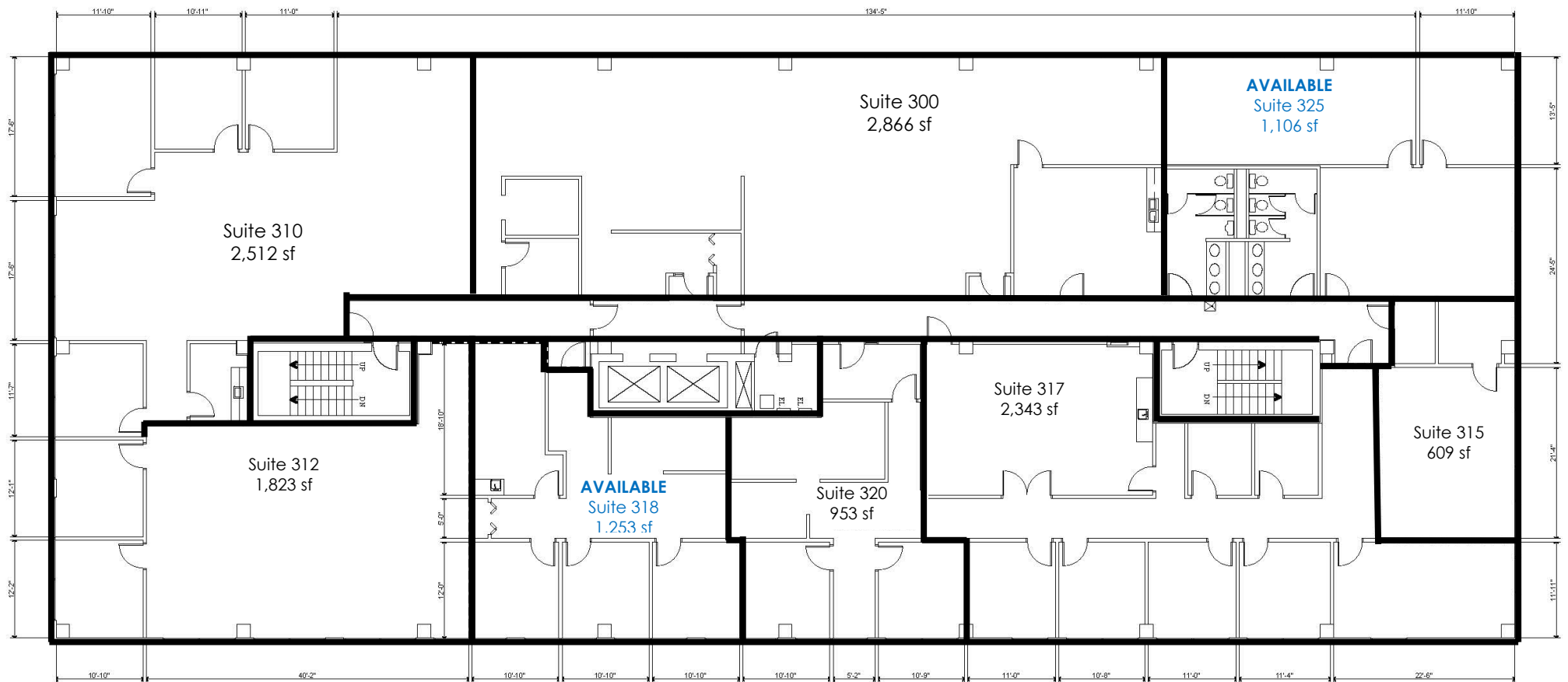
Suite 200  
1,350 sf

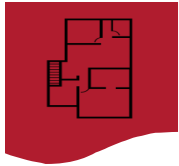
AVAILABLE  
Suite 220  
2,877 sf



# Site Plan

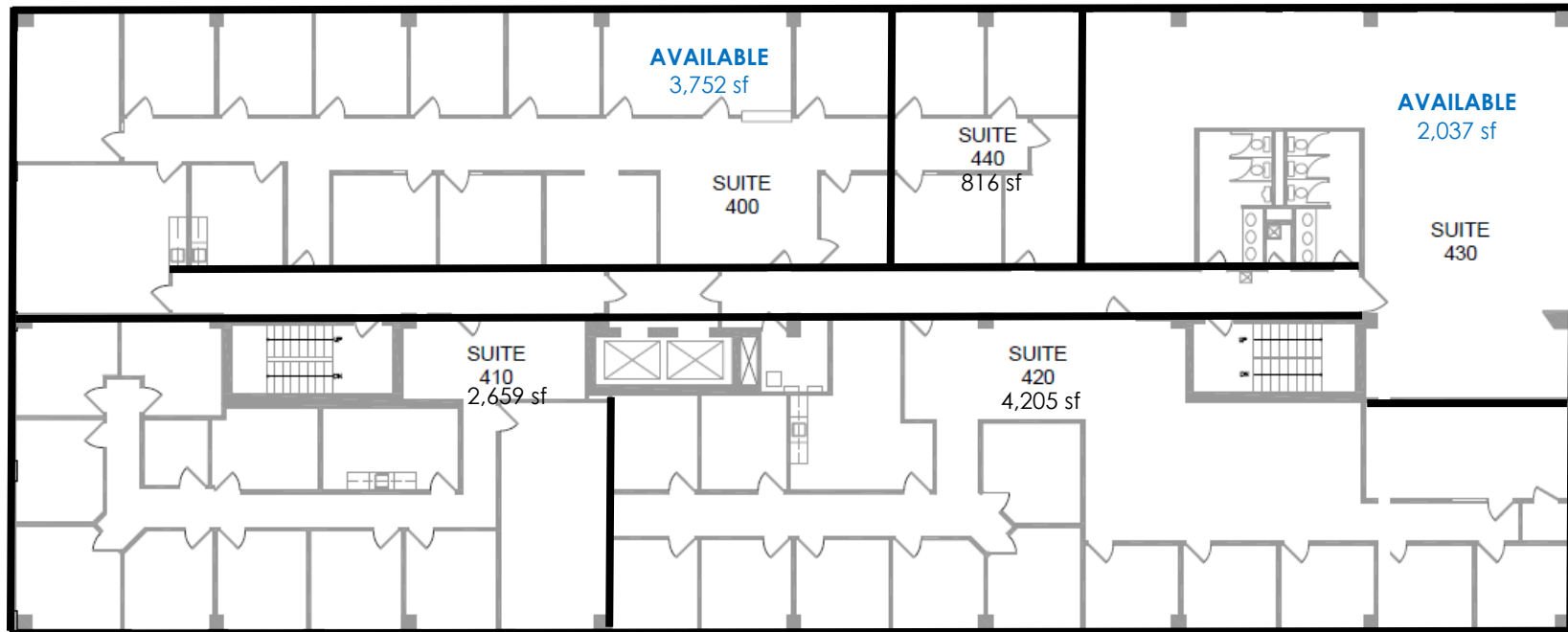
## 3rd FLOOR





# Site Plan

## 4th FLOOR





# Contact

---

## **Kraus-Anderson**

501 South Eighth Street  
Minneapolis, MN 55404

[www.krausanderson.com](http://www.krausanderson.com)

Main 612-332-7281  
Fax 952-881-8114



## **Chris Olson**



O: 612-255-2350

C: 651-245-8010



[dave.stalsberg@krausanderson.com](mailto:dave.stalsberg@krausanderson.com)