

FOR LEASE

26440 SOUTHFIELD RD

LATHRUP VILLAGE, MI 48076



JACKSON SAVAGE
ASSOCIATE | BROKERAGE SERVICES
P: 734.649.4353 **E:** JACKSON.SAVAGE@FREG.COM

ANDREW J. BOWER
VICE PRESIDENT | BROKERAGE SERVICES
P: 248.848.4193 **E:** ANDREW.BOWER@FREG.COM

26440 SOUTHFIELD RD

PROPERTY HIGHLIGHTS

- Flexible office suites available within a 5,920 SF professional office building
- Individually metered electric, allowing tenants to control and manage their own operating costs
- Prime Southfield Road frontage with excellent visibility
- Convenient access to I-696, M-10 (Lodge Freeway), and Telegraph Road
- Ample on-site parking for tenants and visitors
- Ideal for professional services, medical, or small business users
- Well-maintained building under responsive ownership willing to provide tenant improvements for qualified tenants

Building Size **5,920 SF**

Property Type **Office**

City **Lathrup Village**

Lease Rate **\$16.00/SF Gross + Electric**

The information provided herein along with any images or attachment(s) was obtained from sources believed to be reliable, however, Friedman Real Estate makes no guarantees, warranties, or representations as to the completeness or accuracy of such information and legal counsel is advised. All information provided is subject to verification and no liability for reliance on such information or errors or omissions is assumed. The presentation of this property is submitted subject to errors, omissions, change of price or conditions, prior sale or lease, or withdrawal without notice. Copyright © 2025 Friedman Real Estate. All rights reserved.



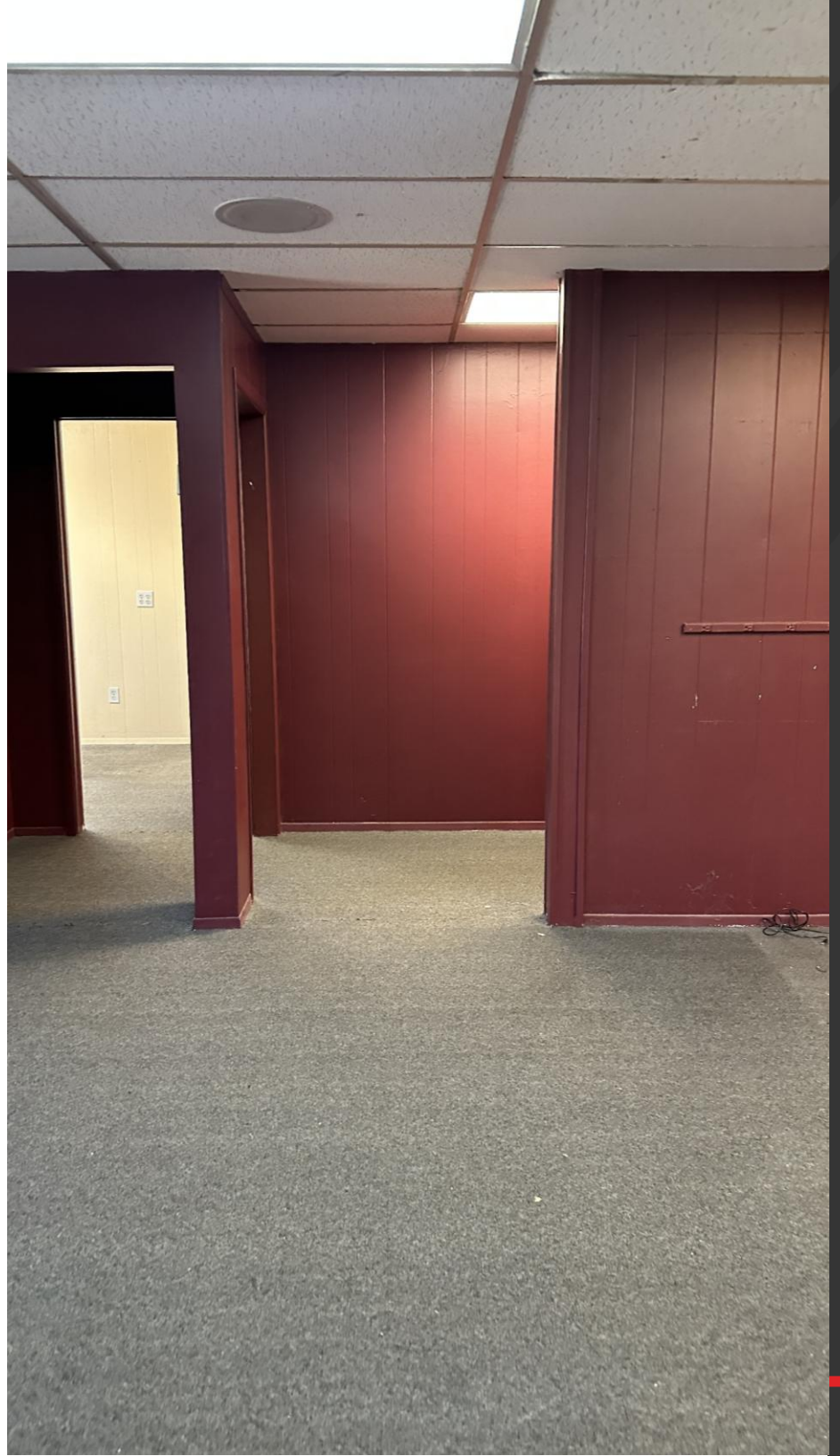
PROPERTY HIGHLIGHTS



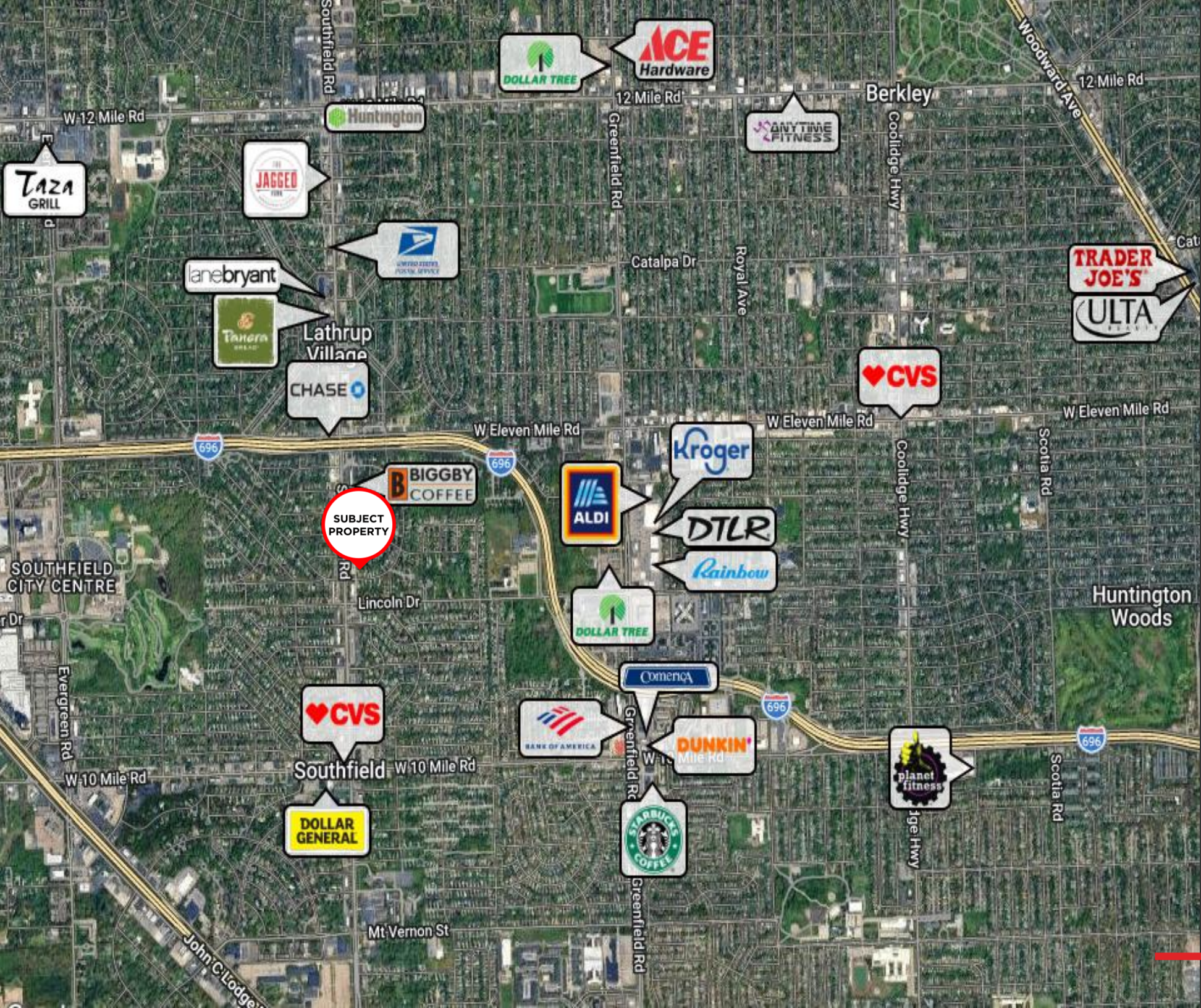
EXTERIOR PHOTOS



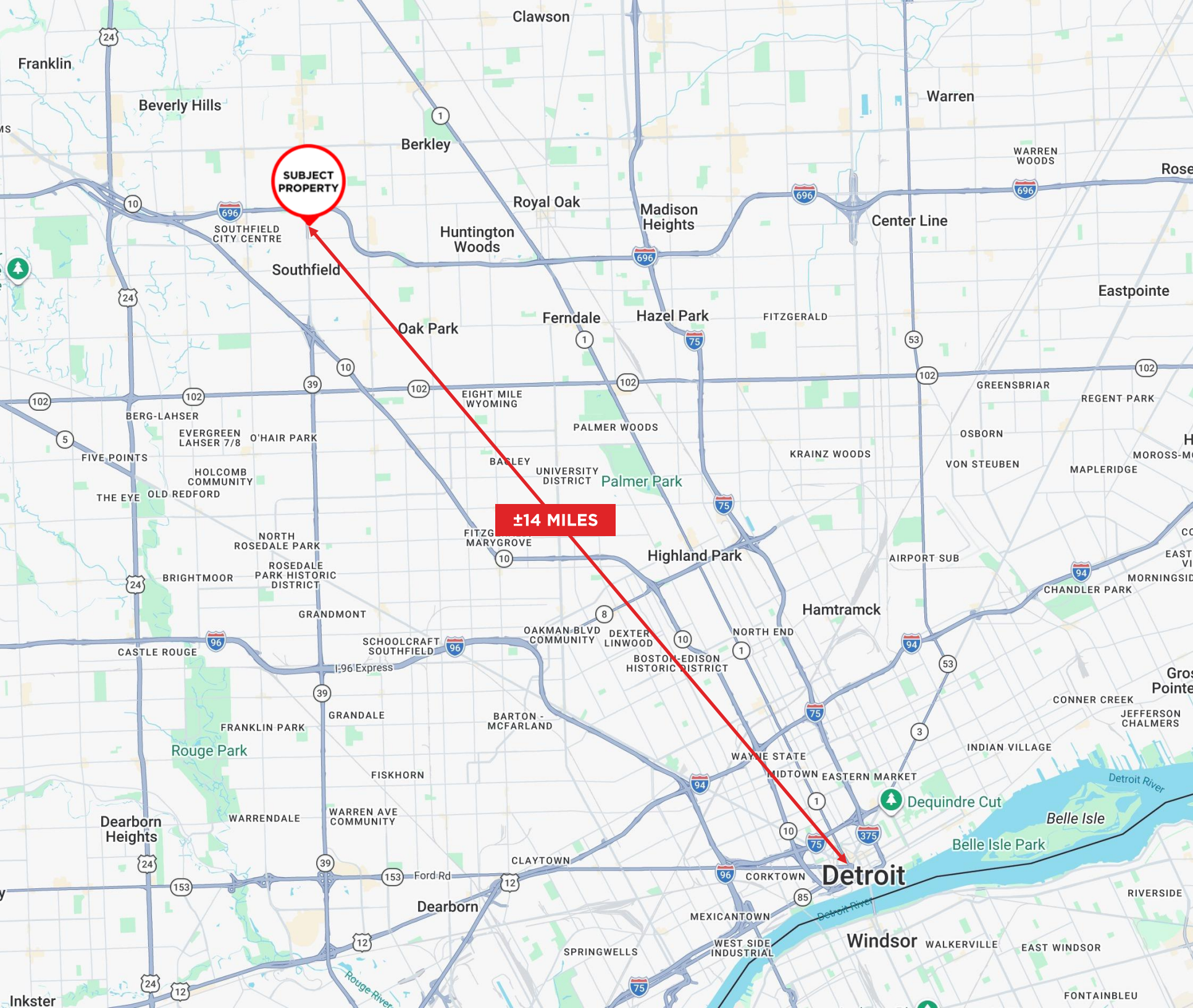
INTERIOR PHOTOS



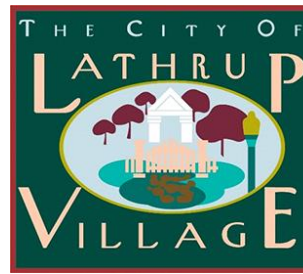
INTERIOR PHOTOS



NEARBY AMENITIES



PROPERTY LOCATION



Lathrup Village is a small suburban city in Oakland County within the Detroit metropolitan area. It is known for its historic residential planning, diverse community, and relatively high household incomes. With a population of roughly **4,000 residents**, the city offers a quiet suburban lifestyle while remaining closely connected to the larger economic hub of metro Detroit.

The city was developed in the 1920s by real estate developer Louise Lathrup Kelley, who designed it as a **planned residential community** with strict construction standards such as masonry houses and minimum building costs to ensure architectural quality.

Lathrup Village has a diverse population and is notable in the Detroit region for its strong African-American middle- and upper-middle-class community. The local economy is relatively small but supported by professional residents and nearby business centers.

LATHRUP VILLAGE, MI

EST POPULATION	±4,050
HOUSEHOLDS	±1,660
AVG HH INCOME	±\$149,900

CREATING
VALUE
BEYOND
REAL
ESTATE



JACKSON SAVAGE | ASSOCIATE | BROKERAGE SERVICES
ANDREW J. BOWER | VICE PRESIDENT | BROKERAGE SERVICES

FRIEDMAN REAL ESTATE | 34975 W. 12 MILE ROAD | FARMINGTON HILLS, MI 48331 | FRIEDMANREALESTATE.COM

