

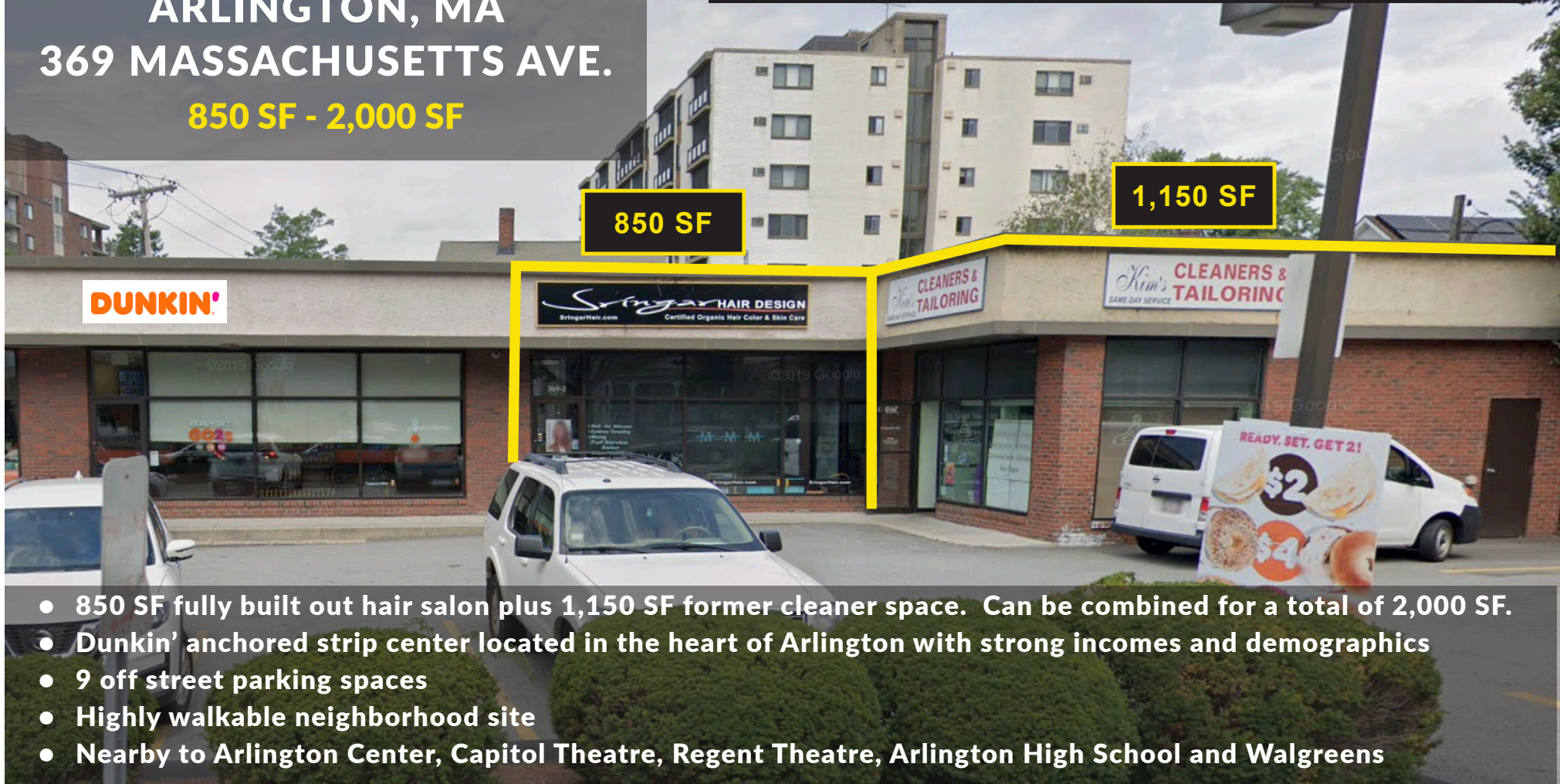
RETAIL SPACE FOR LEASE

- opportunity in -
ARLINGTON, MA
369 MASSACHUSETTS AVE.
850 SF - 2,000 SF



CONVISER PROPERTY GROUP, INC

858 WASHINGTON STREET, SUITE 306 • DEDHAM, MA 02026
O: (781) 320-0600 • F: (781) 791-4599 • WWW.CONVISERPG.COM
JIM CONVISER • JIM @ CONVISERPG.COM • 617.839.0456



- 850 SF fully built out hair salon plus 1,150 SF former cleaner space. Can be combined for a total of 2,000 SF.
- Dunkin' anchored strip center located in the heart of Arlington with strong incomes and demographics
- 9 off street parking spaces
- Highly walkable neighborhood site
- Nearby to Arlington Center, Capitol Theatre, Regent Theatre, Arlington High School and Walgreens

SQ. FOOTAGE



1,150 SF
850 SF

RENT



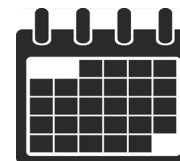
Upon Request

NNN CHARGES



\$8.00/psf

DELIVERY



1,150 SF: Immediately
850 SF: 9/1/20

PARKING



9 off street spaces

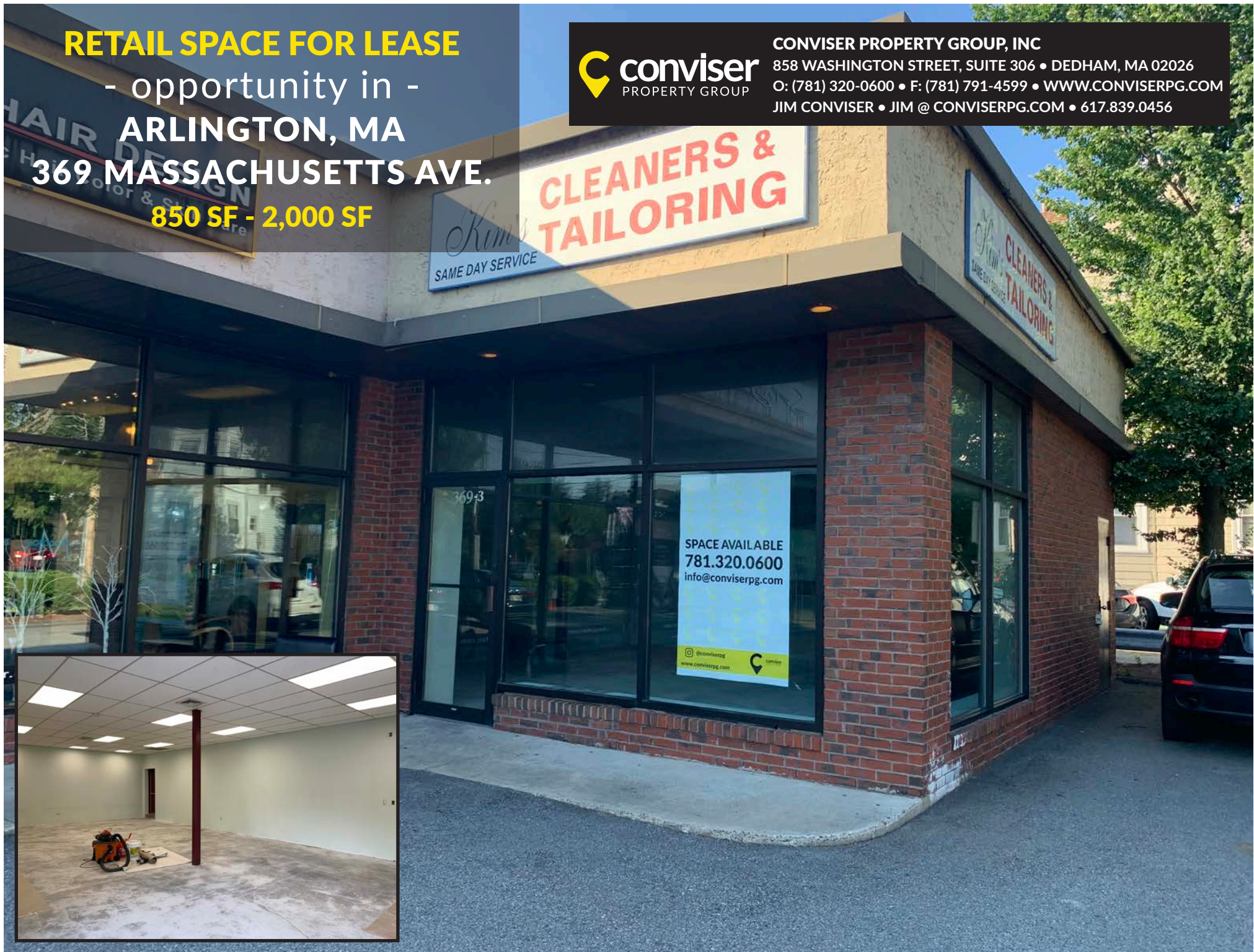
RETAIL SPACE FOR LEASE

- opportunity in -
ARLINGTON, MA
369 MASSACHUSETTS AVE.
850 SF - 2,000 SF



CONVISER PROPERTY GROUP, INC

858 WASHINGTON STREET, SUITE 306 • DEDHAM, MA 02026
O: (781) 320-0600 • F: (781) 791-4599 • WWW.CONVISERPG.COM
JIM CONVISER • JIM@CONVISERPG.COM • 617.839.0456



RETAIL SPACE FOR LEASE

- opportunity in -
ARLINGTON, MA
369 MASSACHUSETTS AVE.

850 SF - 2,000 SF

**ARLINGTON
CENTER
.7 MILES**

369 MASSACHUSETTS AVE.



850 SF - 2,000 SF AVAILABLE

Walgreens



Capitol
Theatre



POPULATION

1/2 Mile:	8,909
1 Mile:	30,318
5 Min DT:	63,875



DAYTIME POPULATION

1/2 Mile:	2,984
1 Mile:	7,262
5 Min DT:	13,823



MEDIAN HH INCOME

1/2 Mile:	\$96,475
1 Mile:	\$99,999
5 Min DT:	\$112,469



CONVISER PROPERTY GROUP, INC

858 WASHINGTON STREET, SUITE 306 • DEDHAM, MA 02026
O: (781) 320-0600 • F: (781) 791-4599 • WWW.CONVISERPG.COM
JIM CONVISER • JIM @ CONVISERPG.COM • 617.839.0456



find your place

FOR MORE INFORMATION CONTACT:

JIM CONVISER • JIM@CONVISERPG.COM • MOBILE: (617) 839-0456

CONNECT WITH US ON SOCIAL MEDIA:



CONVISER PROPERTY GROUP, INC

858 WASHINGTON STREET, SUITE 306 • DEDHAM, MA 02026

O: (781) 320-0600 • F: (781) 791-4599 • WWW.CONVISERPG.COM

CONVISER PROPERTY GROUP IS A MEMBER OF **SITE  SOURCE**
RETAIL BROKER NETWORK