

12200 E. THIRTEEN MILE RD
WARREN, MICHIGAN

OFFICE FOR LEASE

864 – 3,885 Square Feet Available



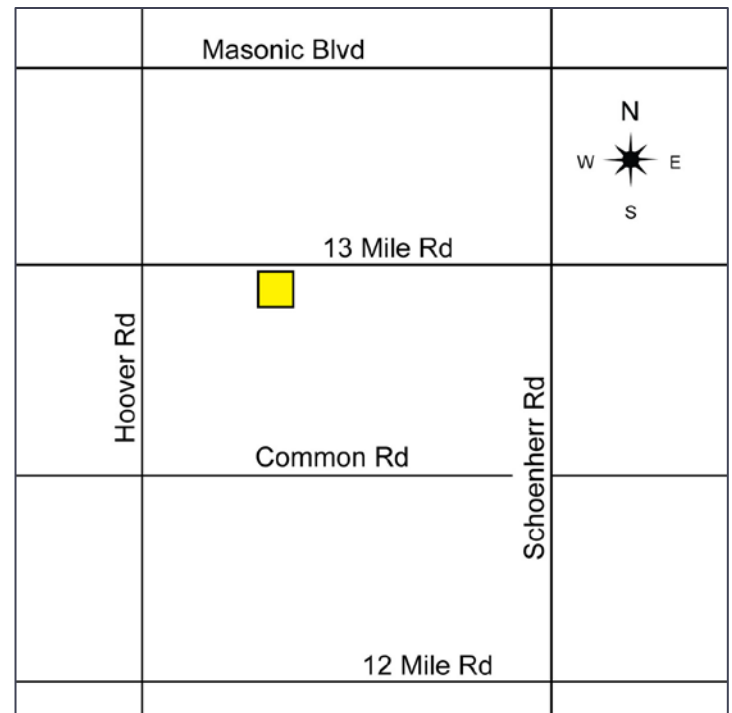
SIGNATURE ASSOCIATES
KNOW SIGNATURE | KNOW RESULTS

REGENCY PLACE I



PROPERTY FEATURES

- Suites available from 864 – 3,885 square feet
- Some suites move-in ready
- Beautifully updated lobby
- Attractive brick exterior
- Professionally managed
- Aggressive rental rates
- Generous tenant improvement package available
- Close proximity to GM Tech, TACOM and freeways
- Lease Rate: \$ 13.95/sf G+E+J



For more information, please contact:

JEFFREY TREPECK

(248) 359 0626

jtrepeck@signatureassociates.com

DAVE MILLER

(248) 948 4183

dmiller@signatureassociates.com

SIGNATURE ASSOCIATES

One Towne Square, Suite 1200

Southfield, MI 48076

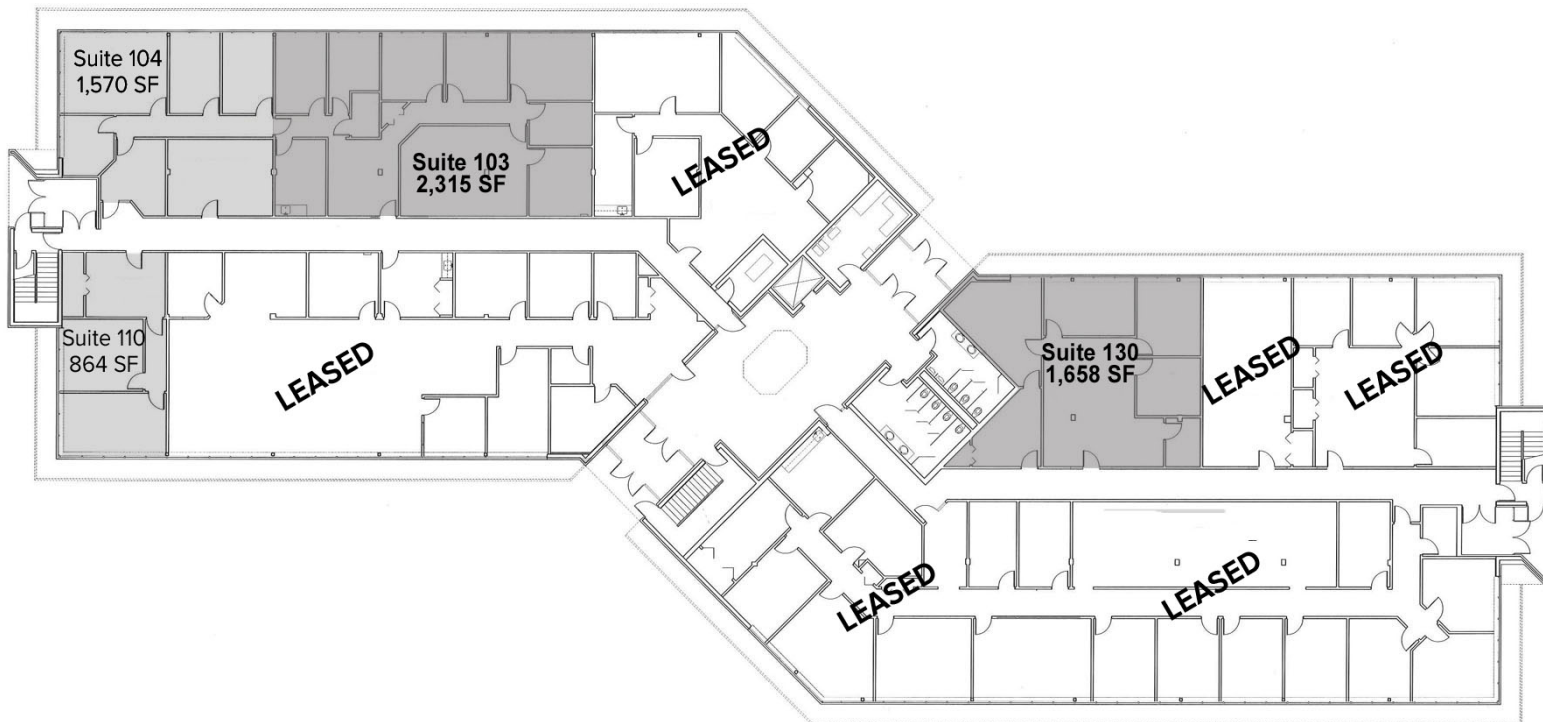
www.signatureassociates.com

12200 E. Thirteen Mile Road – Warren, Michigan

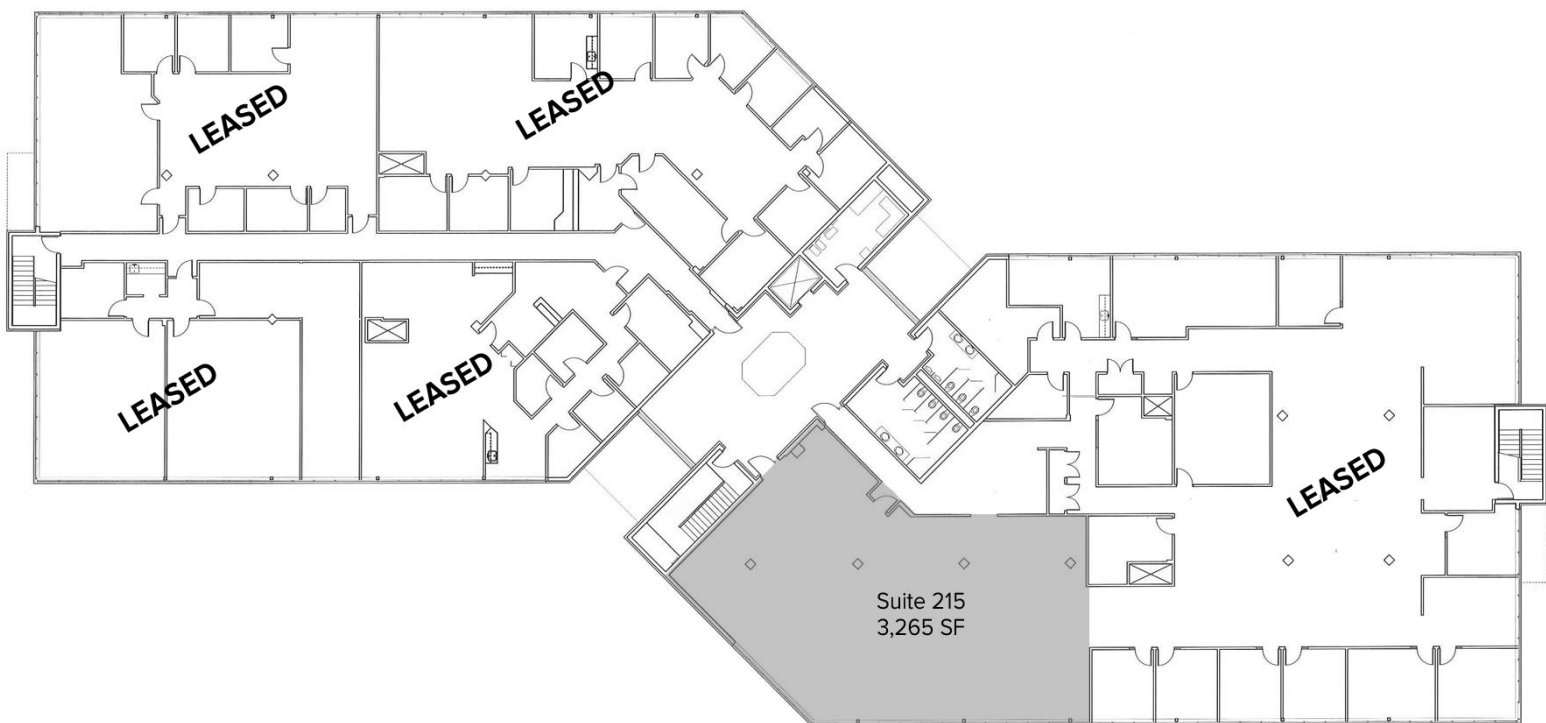
Office For Lease

864 – 3,885
Square Feet
AVAILABLE

1st Floor



2nd Floor



For more information, please contact:

JEFFREY TREPECK
(248) 359 0626
jtrepeck@signatureassociates.com

DAVE MILLER
(248) 948 4183
dmiller@signatureassociates.com

SIGNATURE ASSOCIATES
One Towne Square, Suite 1200
Southfield, MI 48076
www.signatureassociates.com