



For Lease

1431 MERRILL DRIVE LITTLE ROCK, AR

FEATURES:

- Zoned C-3
- Building signage
- Front door parking
- Rear access to all suites
- Excellent corner lot visibility
- Proximity to popular shopping centers and restaurants.
- Easy access to I-630 & I-430.

SUITE H

2nd Floor

3,440 SF +/-

NNN LEASE

Base Rent
\$20.00/sf/yr

+

Est. CAM
\$3.00/sf/yr

Ideal for
professional
offices or service
firms seeking
street presence,
easy access, and
buildout
flexibility.

GEORGE PETROV,
PRINCIPAL BROKER



www.p4realtygroup.com



george@p4realtygroup.com

O: 501/224-9600

C: 501/413-3664

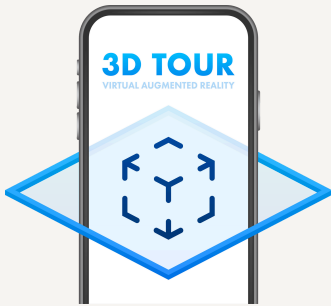
1431 MERRILL DRIVE

LITTLE ROCK, AR 72211

SUITE H - 3,440 SF +/-

P4
Realty Group

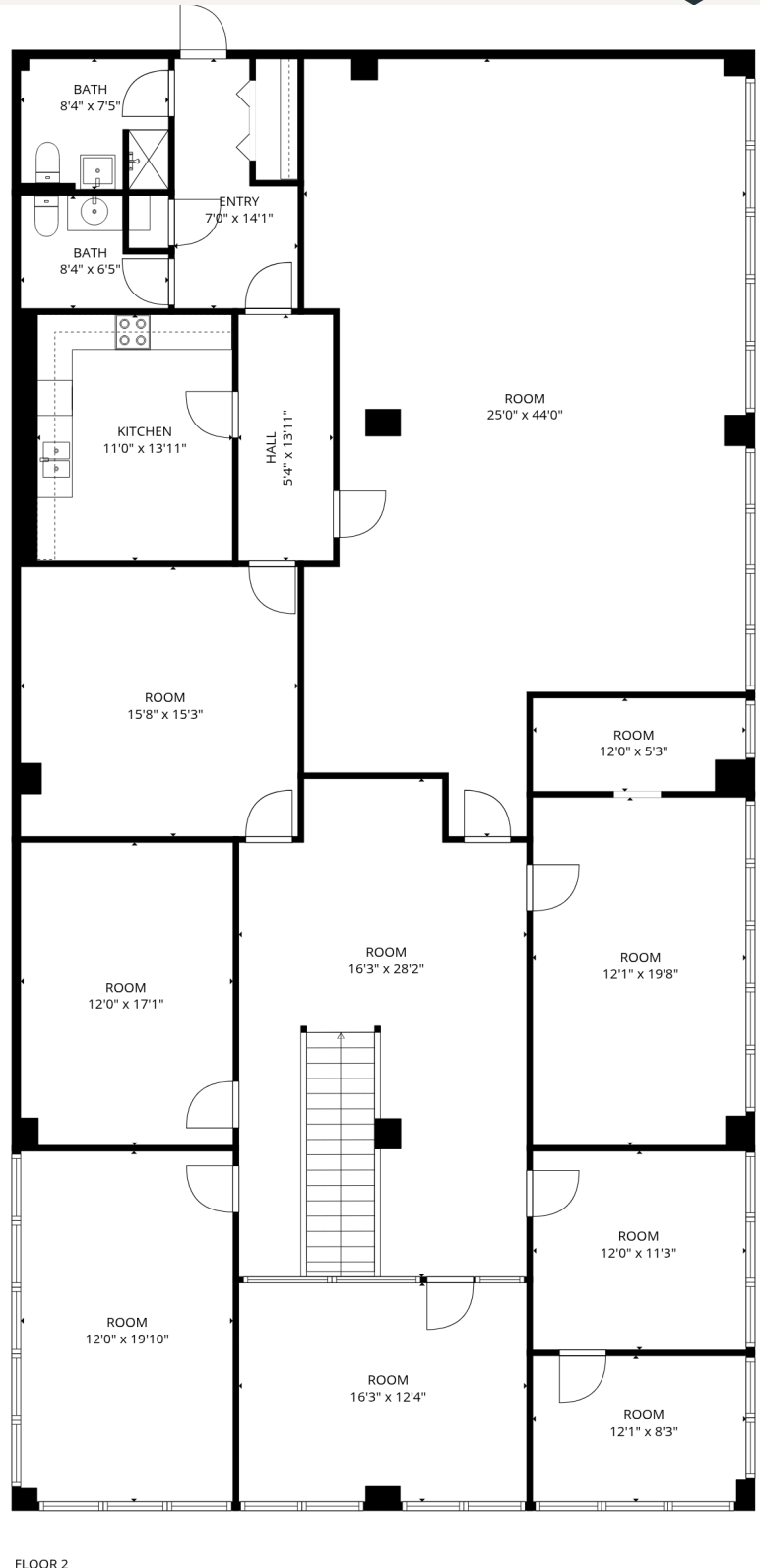
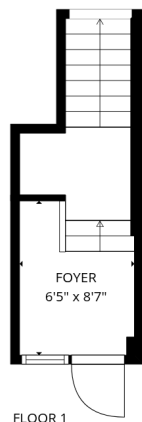
Floor Plan



Please visit our website:
P4realtygroup.com
for a 3D virtual tour of this
space.

PRESENTED BY:

George Petrov,
Principal Broker
501/224-9600
george@p4realtygroup.com



1431 MERRILL DRIVE

LITTLE ROCK, AR 72211

Location Details

P4
Realty Group



PRESENTED BY:

George Petrov,
Principal Broker

📞 501/224-9600

✉️ george@p4realtygroup.com



1431 MERRILL DRIVE

LITTLE ROCK, AR 72211

Area Map

P4

Realty Group

