



Turnkey Medical Suite *for Lease*

Aaron Flynn

+1 208 807 3332

aaron.flynn@colliers.com

755 West Front Street, Suite 300
Boise, Idaho 83702
+1 208 345 9000
colliers.com/idaho

300 Main

300 W Main St, Boise, ID

Highlights:

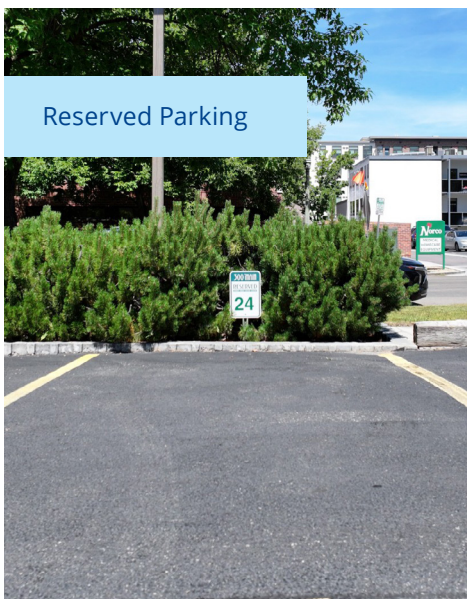
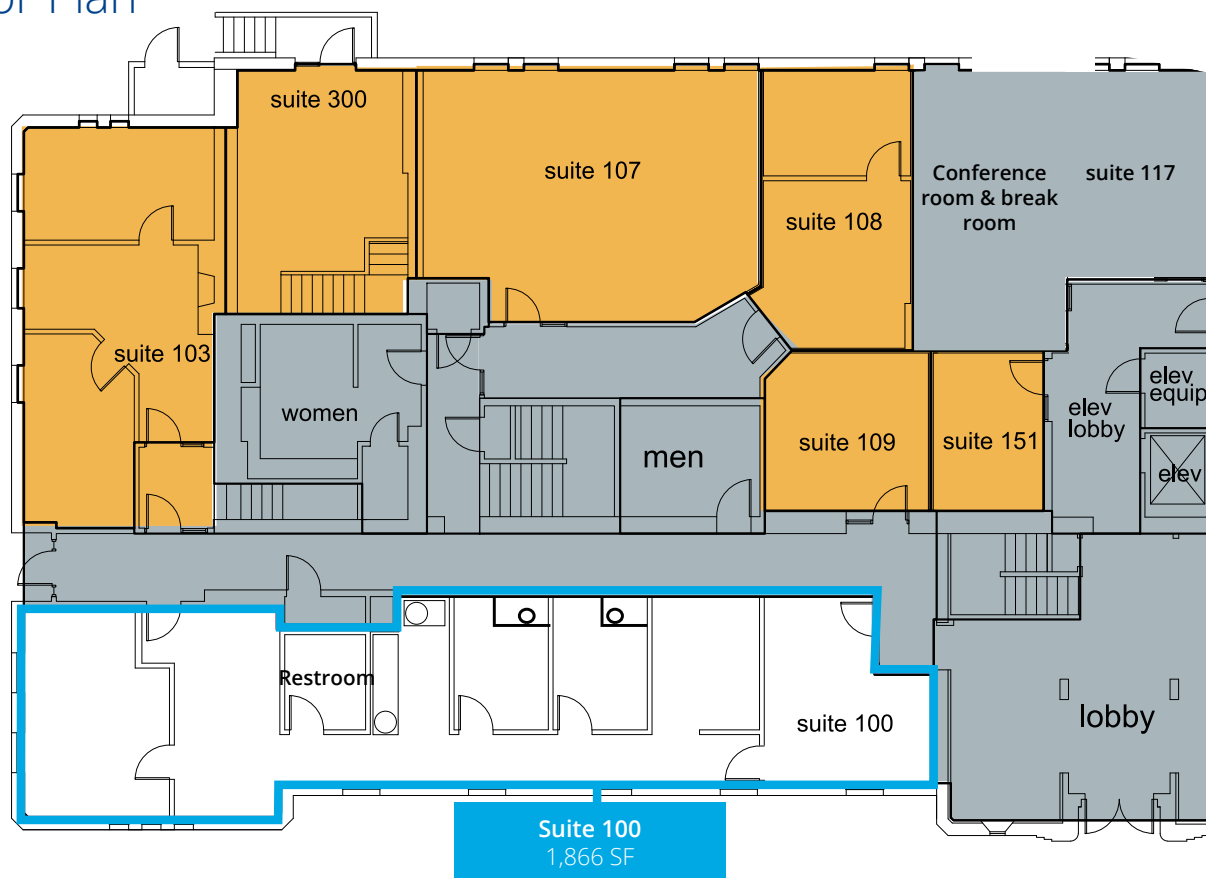
- Prime medical office, only two blocks from St. Luke's in Downtown Boise
- Turnkey medical suite featuring private offices/exam rooms, reception, built-in cabinetry, and private restroom
- 5 reserved **on-site** parking spaces, bike rack, shared conference/break room and locker/shower access
- Lease includes nightly janitorial (Mon–Fri) and after-hours access
- Signage on Main Street, outdoor patio with tables and landscaping
- Steps from restaurants, shopping and Boise State University

Do not disturb tenants — contact agent to schedule tours

First Floor

Suite	Size	Rate	Notes
100	1,866 SF	\$20/sf	Bright, window-lined space ideal for medical or professional office use. Includes private restroom, 4 offices or exam rooms, and reception with built-in cabinetry

Floor Plan



Property Gallery



Location

Property Information

Property Type	Office
Available SF	355-3,314 SF
Building Size	19,286 SF
Lease Rate	\$18-22 SF
Lease Type	Full service, including janitorial

Demos

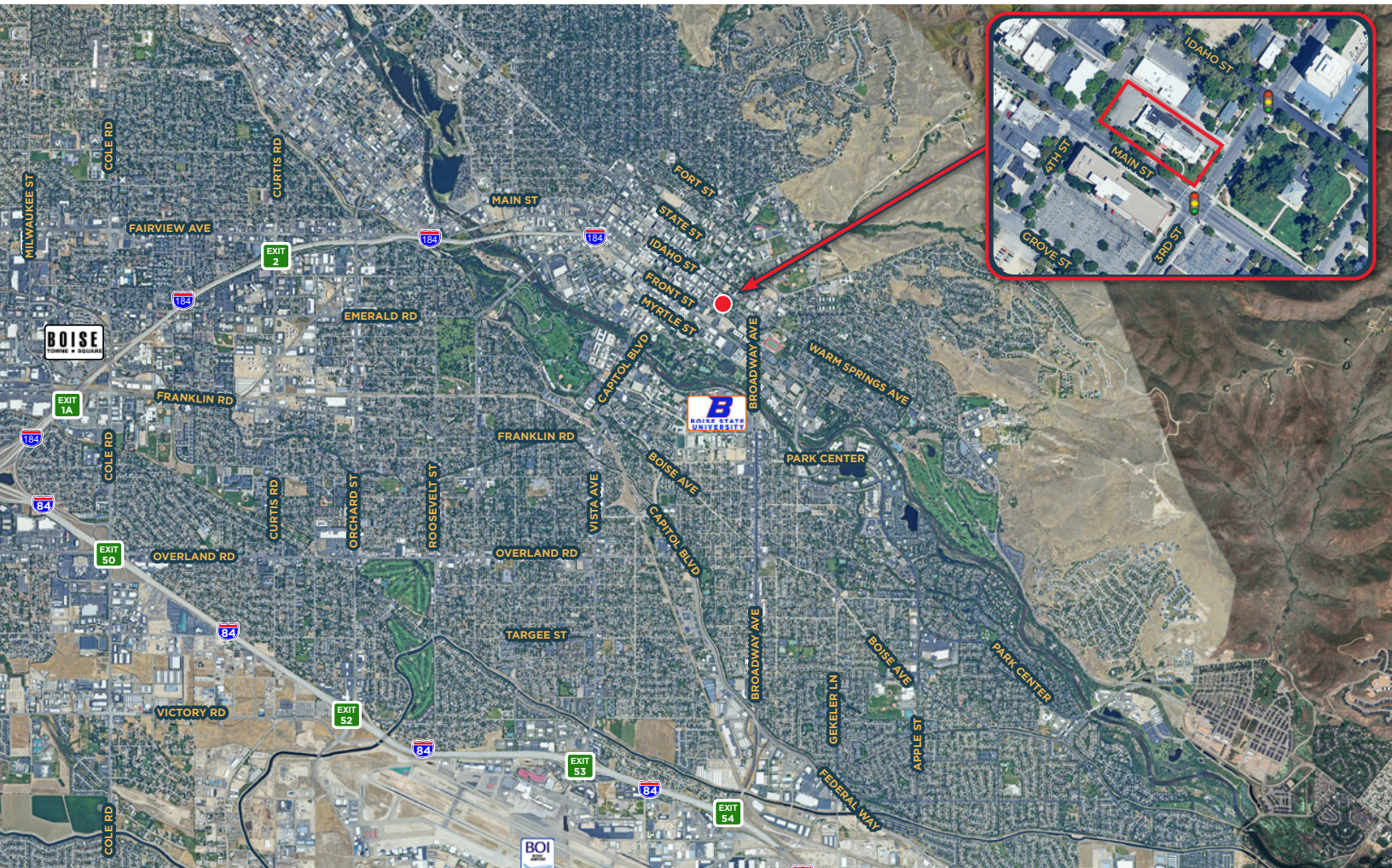
	1 Mile	3 Miles	5 Miles
Population	15,684	91,387	163,339
Median Age	28	37	38
Avg. HH Income	\$54,837	\$68,529	\$70,164



[Google Map](#)

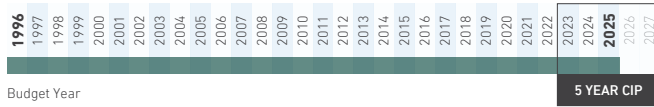


[Street View](#)



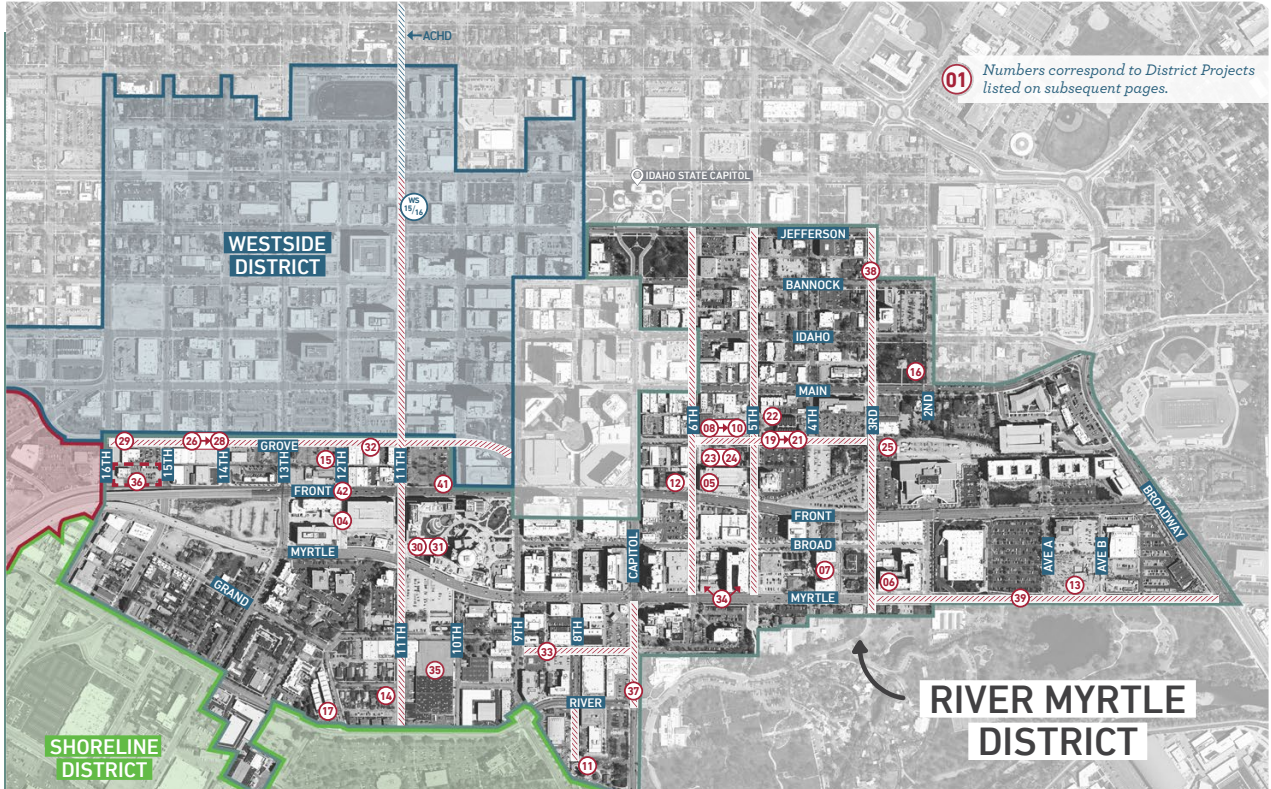
CCDC Improvement Plan

CURRENT 5 YEAR CIP TIMELINE



303 ACRES

BASE VALUE: \$121 MILLION
 2023 TOTAL INCREMENT VALUE: \$1.35 BILLION
 2023 ANNUAL INCREMENT REVENUE: \$12.7 MILLION



est. 1995

The River-Myrtle Old Boise (RMOB) District consisted of mostly vacant property, warehouses, and remnants of older industrial uses when it was first established in 1996. The formation of the RMOB District was a community-directed effort to assure that downtown Boise remains the foremost urban center in the region for business, government, culture, education, and urban living. The district's plan set-forth a vision for the area that maintained the urban vitality of the downtown core while extending it into the larger downtown area and created a place that is attractive to fundamental industries, cutting edge companies, and the workforce they employ.

PRIMARY STRATEGIES FOR THE DISTRICT

- Assure that downtown continues to include thriving residential neighborhoods. Increase the number of downtown residents with housing opportunities at all income levels.
- Recruit hotels, retail and other services to create a people-orientated downtown that attracts visitors, conferences, and employers.
- Improve streets, sidewalks and alleyways so they offer a safe and welcoming pedestrian environment.
- Create a system of parks, plazas, and public spaces that become focal points in the various sub-districts of downtown, act as catalysts for private development, and add livability to the urban surroundings.
- Reduce reliance on surface parking through more sustainable development, increased connectivity for pedestrians and cyclists, and the consolidation of parking into parking structures.



755 West Front Street, Suite 300
 Boise, Idaho 83702
 208 345 9000
 colliers.com/idaho

This document has been prepared by Colliers for advertising and general information only. Colliers makes no guarantees, representations or warranties of any kind, expressed or implied, regarding the information including, but not limited to, warranties of content, accuracy and reliability. Any interested party should undertake their own inquiries as to the accuracy of the information. Colliers excludes unequivocally all inferred or implied terms, conditions and warranties arising out of this document and excludes all liability for loss and damages arising there from. This publication is the copyrighted property of Colliers and /or its licensor(s). © 2026. All rights reserved. This communication is not intended to cause or induce breach of an existing listing agreement. Colliers Paragon, LLC.