

CENTURY 21 COMMERCIAL®

Triangle Group

MORRISVILLE GATEWAY
CENTER

*419 Airport Blvd
Morrisville, NC 27560*

Premier commercial development opportunity, strategically located near I-40, I-540, and RDU Airport. This prime site offers exceptional accessibility, high visibility, and versatile zoning options for retail, office, or mixed-use development. Positioned in Morrisville's thriving commercial corridor, this property is ideal for businesses seeking maximum exposure in a high-growth market.

Highlights:

Prime Location: Close to major highways and RDU Airport
High Visibility: Perfect for businesses needing exposure
Versatile Use: Zoned for retail, office, or mixed-use
High-Growth Area: Located in a booming business district

SALE

**PURCHASE PRICE:
\$899,999.00**

Land Size: 0.70 Acres

Contact:
9842398452

JOSE CRUZ

Commercial Broker

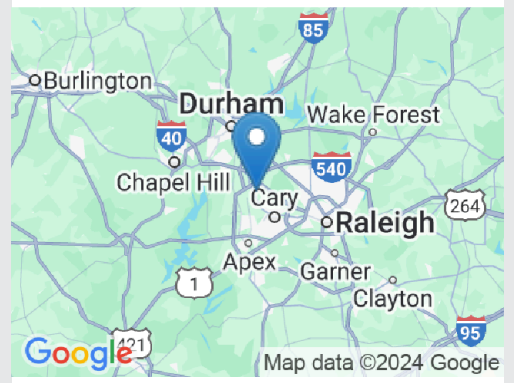
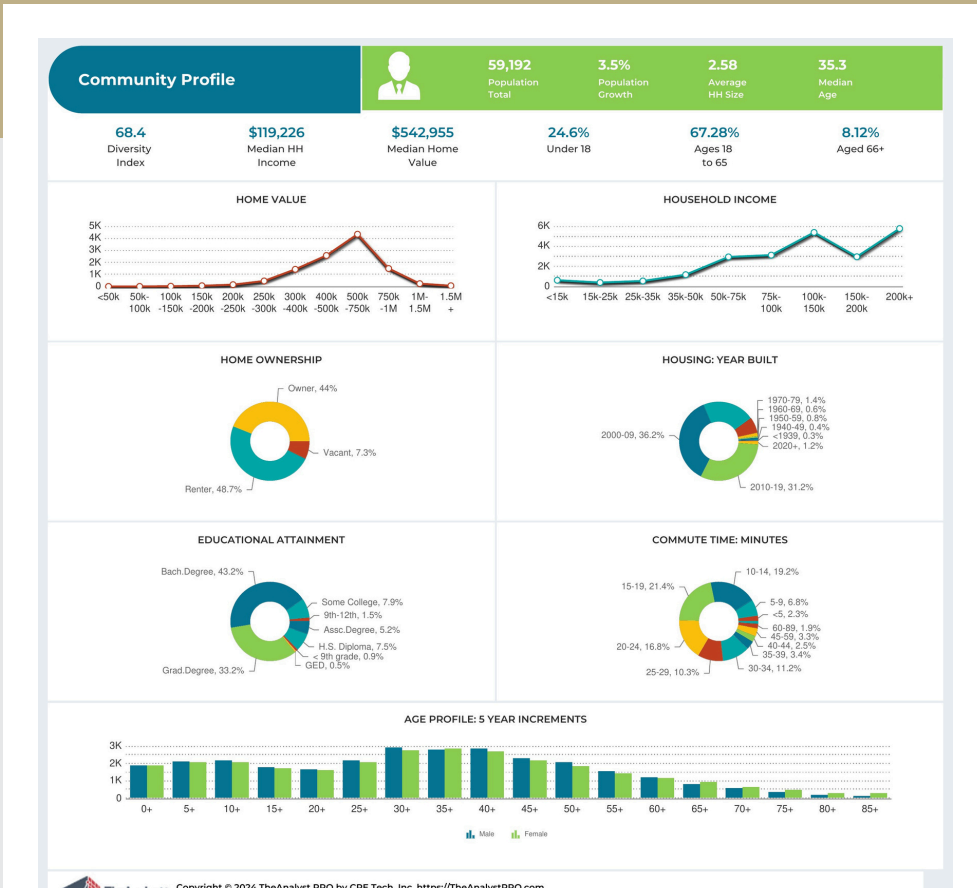
License: 312455

Jose.cruzCommercial@gmail.com



Property Available

984.239.8452



CENTURY 21 COMMERCIAL.
Triangle Group



This information has been obtained from sources believed reliable. We have not verified it and make no guarantee, warranty or representation about it. Any projections, opinions, assumptions or estimates used are for example only and do not represent the current or future performance of the property. You and your advisors should conduct a careful, independent investigation of the property to determine to your satisfaction the suitability of the property for your needs. Photos herein are the property of their respective owners and use of these images without the express written consent of the owner is prohibited.