

FOR LEASE

4,805 SECOND GENERATION RESTAURANT SPACE

1100 Main St., Kansas City, MO 64105 - Lightwell Building



PROPERTY FEATURES

- 4,805 SF freestanding restaurant; FF&E available
- Large patio space
- Join area with Bankia's new 5,300 SF flagship restaurant
- Conveniently located on the KC Streetcar line, with a stop at the front door.
- Surrounded by ample parking: 2,100 daily and 1,150 monthly parking spaces available within three blocks
- Lease Rate: \$25.00/SF, NNN
- Available 12/1/24



CARY TAYLOR

ctaylor@Crossroads-KC.com

M (312) 804-3822 O (816) 448-8836

Crossroads Real Estate Group
O (816) 298-9998
6200 Mastin Street
Merriam, KS 66203



CROSSROADS
REAL ESTATE GROUP

FOR LEASE

4,805 SECOND GENERATION RESTAURANT SPACE

1100 Main St., Kansas City, MO 64105 - Lightwell Building



AREA DEMOGRAPHICS	1 mile	3 mile	5 mile
Avg Household Income	\$92,726	\$70,593	\$70,020
2023 Population	16,338	85,541	229,208
Daytime Employees	55,539	133,484	224,504

The information contained herein has been obtained through sources deemed reliable by Crossroads Real Estate Group, but cannot be guaranteed for its accuracy. We recommend to the buyer that any information, which is of special interest, should be obtained through independent verification. All measurements are approximate.

Crossroads Real Estate Group
O (816) 298-9998
6200 Mastin Street
Merriam, KS 66203



CROSSROADS
REAL ESTATE GROUP

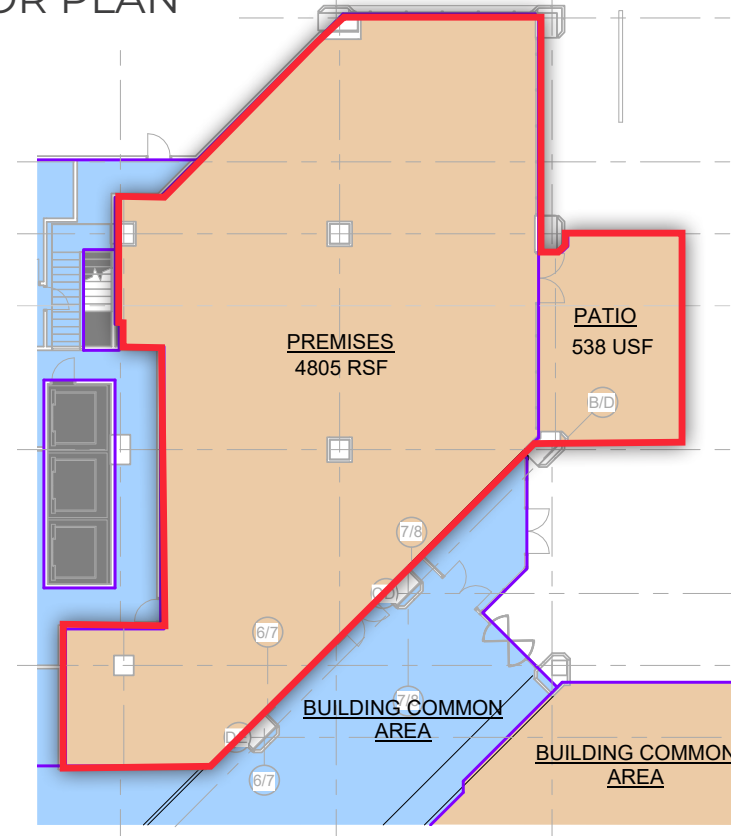
FOR LEASE



4,805 SECOND GENERATION RESTAURANT SPACE

1100 Main St., Kansas City, MO 64105 - Lightwell Building

FLOOR PLAN



- 30-story, modern Class A building in the heart of Downtown Kansas City, with street-level signage opportunity available
- Walking distance to over 1,200 residents
- Over 2,000 Hotel Rooms within 4 blocks

CARY TAYLOR

ctaylor@Crossroads-KC.com

M (312) 804-3822 O (816) 448-8836

Crossroads Real Estate Group
O (816) 298-9998
6200 Mastin Street
Merriam, KS 66203



CROSSROADS
REAL ESTATE GROUP