

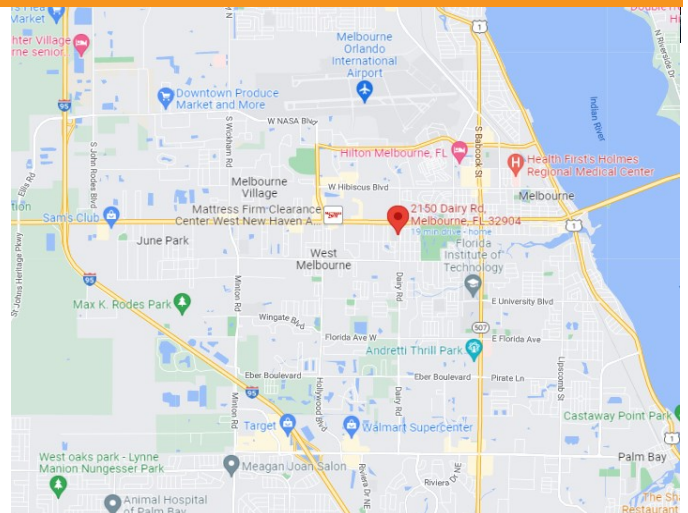
REDEVELOPMENT/JOINT VENTURE OPPORTUNITY

2150 Dairy Road West Melbourne, FL 32904

FOR LEASE OR BUILD TO SUIT



- Redevelopment/Joint Venture Opportunity
- For Lease or Build to Suit
- Approximately 1.98 Acres
- Incredible Potential for Redevelopment
- Amazing Possibilities at this Location with the Current Zoning
- Located on Busy Dairy Road, Just 200 Yards from US-192
- Over 35,000 Vehicles per day Pass through the Intersection of Dairy Road and US-192 (FDOT)



Tom Donnelly

RE/MAX Alternative Realty, Inc.
Office: 321.777.4111
Cell: 321.431.3799
Tom.V.Donnelly@gmail.com

RE/MAX



COMMERCIAL
MANAGEMENT
LEASING
SALES

Shey Anderson

JM Real Estate, Inc.
321.242.2882 x 216
Cell: 321.749.8921
Shey@JMRealEstate.com

REDEVELOPMENT/JOINT VENTURE OPPORTUNITY

2150 Dairy Road West Melbourne, FL 32904



Central Location:

- Located 1.5 miles from Melbourne Orlando International Airport
- Less than 1 mile to Melbourne Square Mall
- Less than 2 miles to Historic Downtown Melbourne
- Easy access to I-95 and to the Beaches

Zoning: I-B Integrated Business

Permitted uses include the following:

- **Commercial** - Retail, Office, Medical Restaurants, Etc
- **Industrial** - Research, Warehouse, Light Manufacturing, Etc
- **Institutional** - Churches, Community Centers, Etc
- **Residential** Single and Multi-Family Dwellings (13-20 units/Acre)

Tom Donnelly

RE/MAX Alternative Realty, Inc.
Office: 321.777.4111
Cell: 321.431.3799
Tom.V.Donnelly@gmail.com

RE/MAX

JM
REAL ESTATE

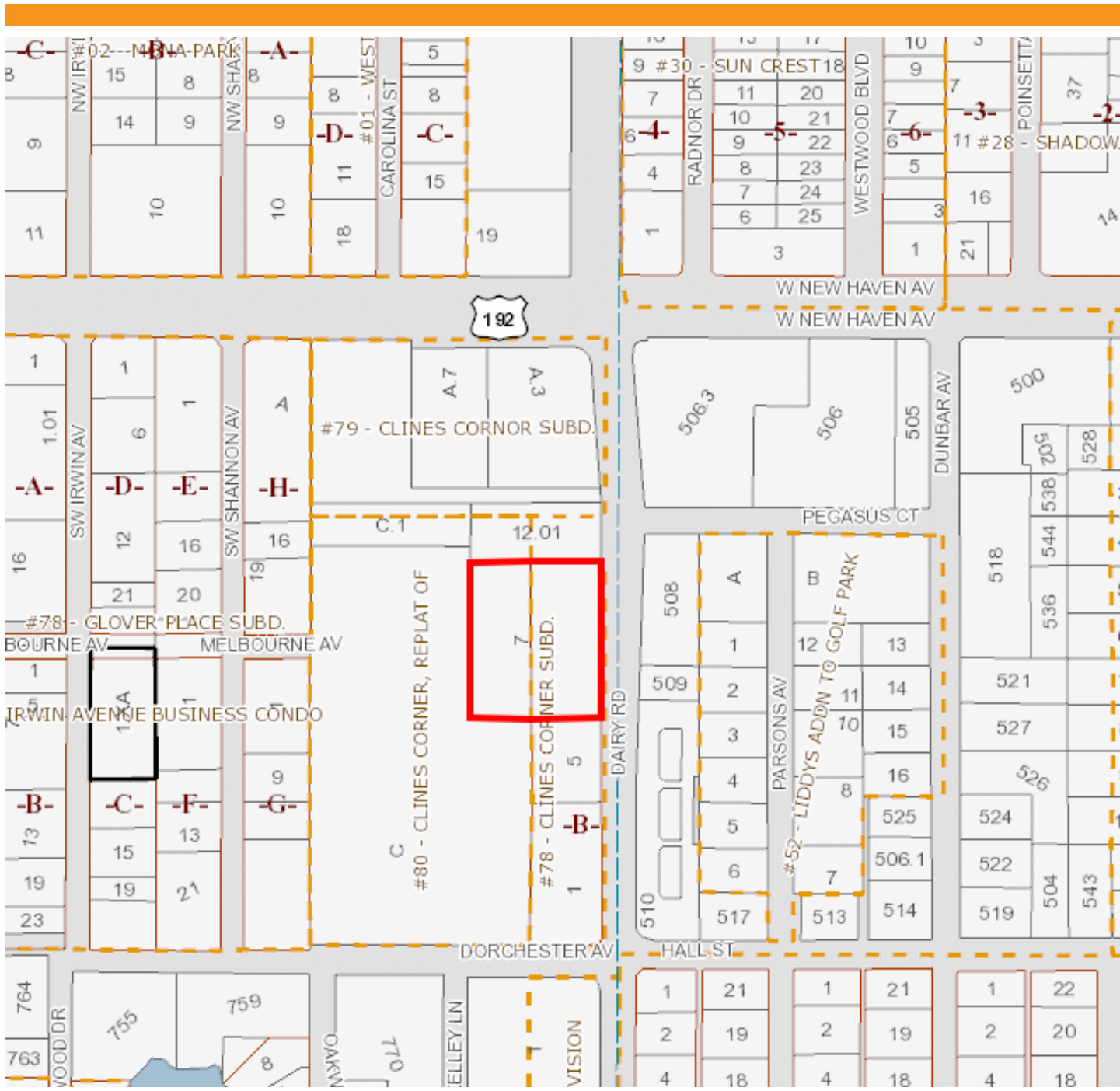
COMMERCIAL
MANAGEMENT
LEASING
SALES

Shey Anderson

JM Real Estate, Inc.
321.242.2882 x 216
Cell: 321.749.8921
Shey@JMRealEstate.com

2150 Dairy Road

West Melbourne, FL 32904



Tom Donnelly
 RE/MAX Alternative Realty, Inc.
 Office: 321.777.4111
 Cell: 321.431.3799
 Tom.V.Donnelly@gmail.com



Shey Anderson
 JM Real Estate, Inc.
 321.242.2882 x 216
 Cell: 321.749.8921
 Shey@JMRealEstate.com