



AVAILABLE SPACES

GROUND FLOOR - SUITE 100 B

3,822 SF (Divisible)

SITE HIGHLIGHTS

- Front facing office with lots of natural light and door man security in building
- Prestigious Franklin Avenue Corridor; Minutes to NYU Winthrop Hospital; Under 3 miles to LIE; Under 1 mile to Garden City LIRR station; 20-30 minute drive to JFK and LaGuardia airports
- Walking distance from local amenities in the Garden City area ranging from restaurants/bars, fitness centers, entertainment, retail, including: BK Sweeney's Uptown Grill, The French Workshop, Pure Barre, Club Pilates, iL Gufo, and Garden City Skin Care Center
- Two (2) miles from Roosevelt Field Mall

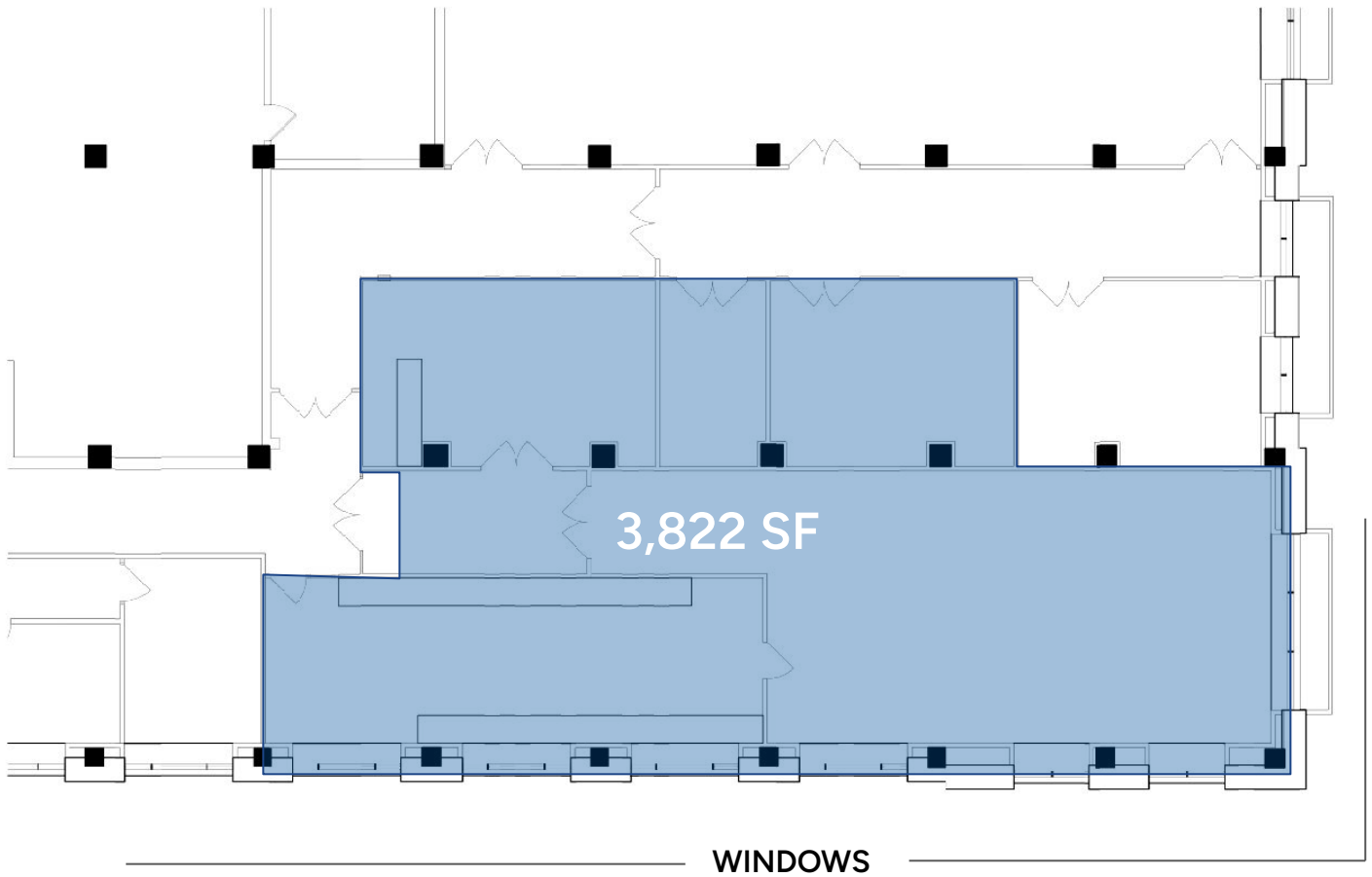
LEASE RATE Upon Request

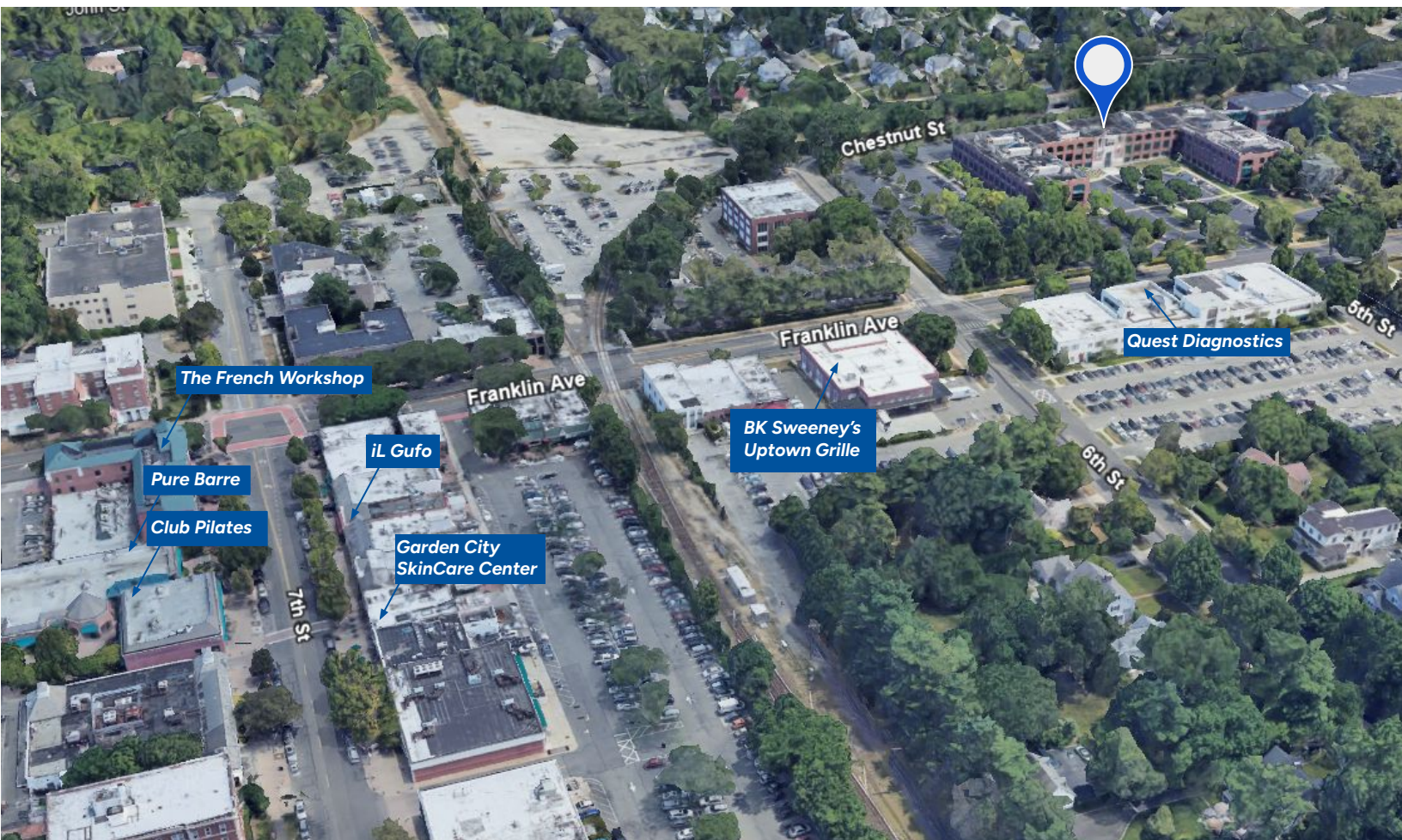
STEEL EQUITIES
999 S. OYSTER BAY ROAD
SUITE 200
BETHPAGE, NY 11714

Jason Miller
516.662.2210 Cell
516.465.0009 Office
jmiller@steelequities.com

Christian Mazzie
631.559.7838 Cell
516.465.0138 Office
cmazzie@steelequities.com

GROUND FLOOR





The information contained herein has either been provided by publicly available data or obtained from sources that we deem reliable. The information is subject to errors, omissions, modifications, and to any listing condition not otherwise provided. We have no reason to doubt the accuracy of the details herein but provide no guarantee to its reliability. All zoning, measurements, allowable uses and all other information herein must be independently verified.