

# 154 North 7<sup>th</sup> Street

Williamsburg, Brooklyn, NY

## Location:

Between Bedford Avenue & Berry Street

## Ground Level:

3,120 SF

## Frontage:

50 FT Frontage


## Ceiling Height:

14 FT on Ground Floor

## Rent:

Upon Request

## Highlights:

- Positioned off the busiest corner intersection with an L-train entrance directly off of the space
- 50 FT of frontage creates great exposure
- ADA compliant access and bathroom
- Ridership of 9,892,516 annually at Bedford Ave  Subway stop
- Williamsburg has a strong retail shopping, eateries, nightlife, office and residential market, and tourists



## NEIGHBORING TENANTS:



## Contact Olmsted Leasing Team



**Harrison Balisky**  
516-672-4493  
hb@olmstedre.com

**Brad Krosser**  
862-368-7271  
bk@olmstedre.com





# 154 North 7<sup>th</sup> Street

Williamsburg, Brooklyn, NY

## Photos



All information is from sources deemed reliable. No representation is made and we do not guarantee the accuracy of any information provided. All information must be independently verified. The value of any real estate investment is dependent on a variety of factors and should be evaluated carefully by prospective purchasers/ or tenants.





# 154 North 7<sup>th</sup> Street

Williamsburg, Brooklyn, NY

## Photos



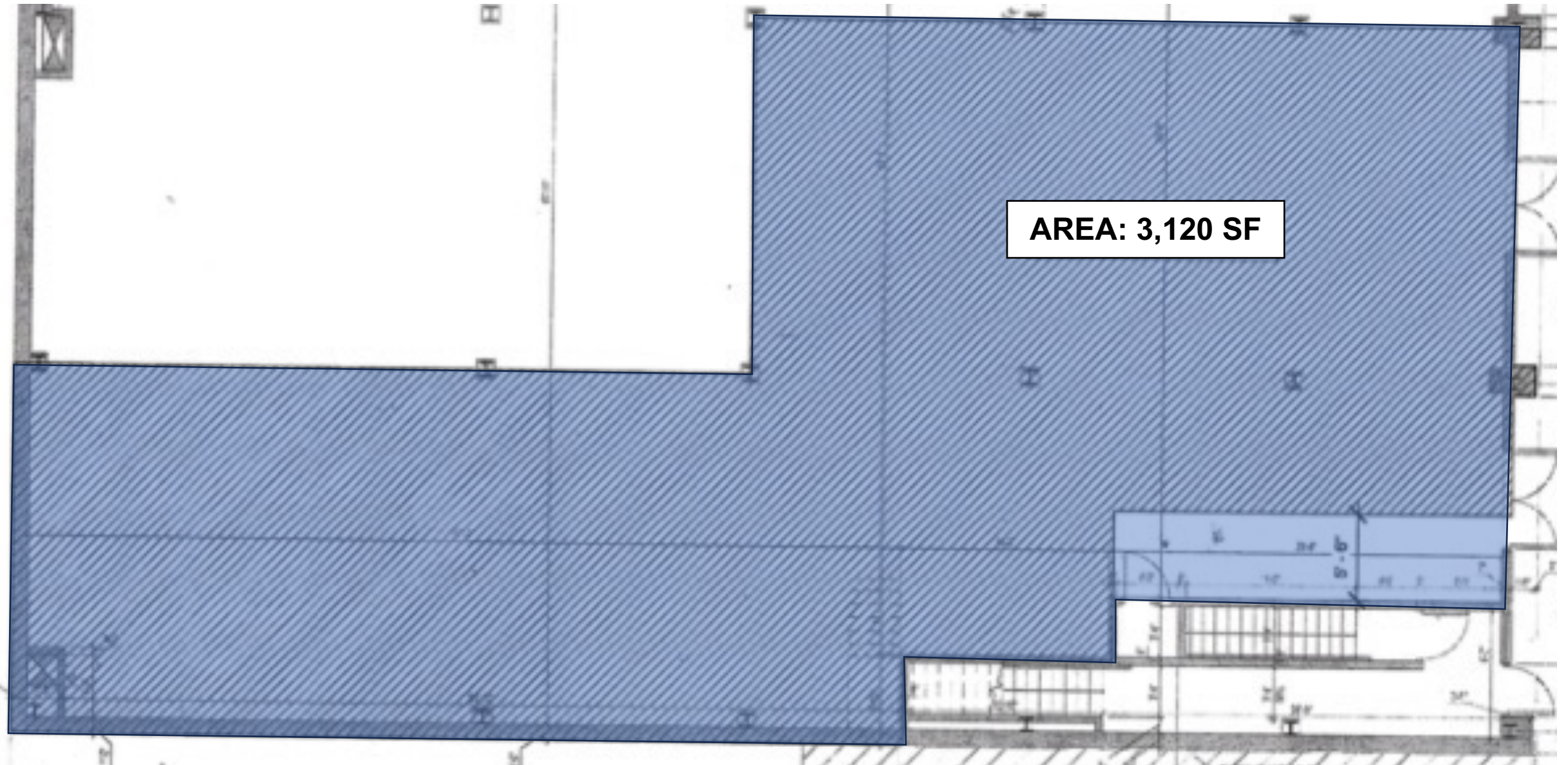




# 154 North 7<sup>th</sup> Street

Williamsburg, Brooklyn, NY

## Floor Plan



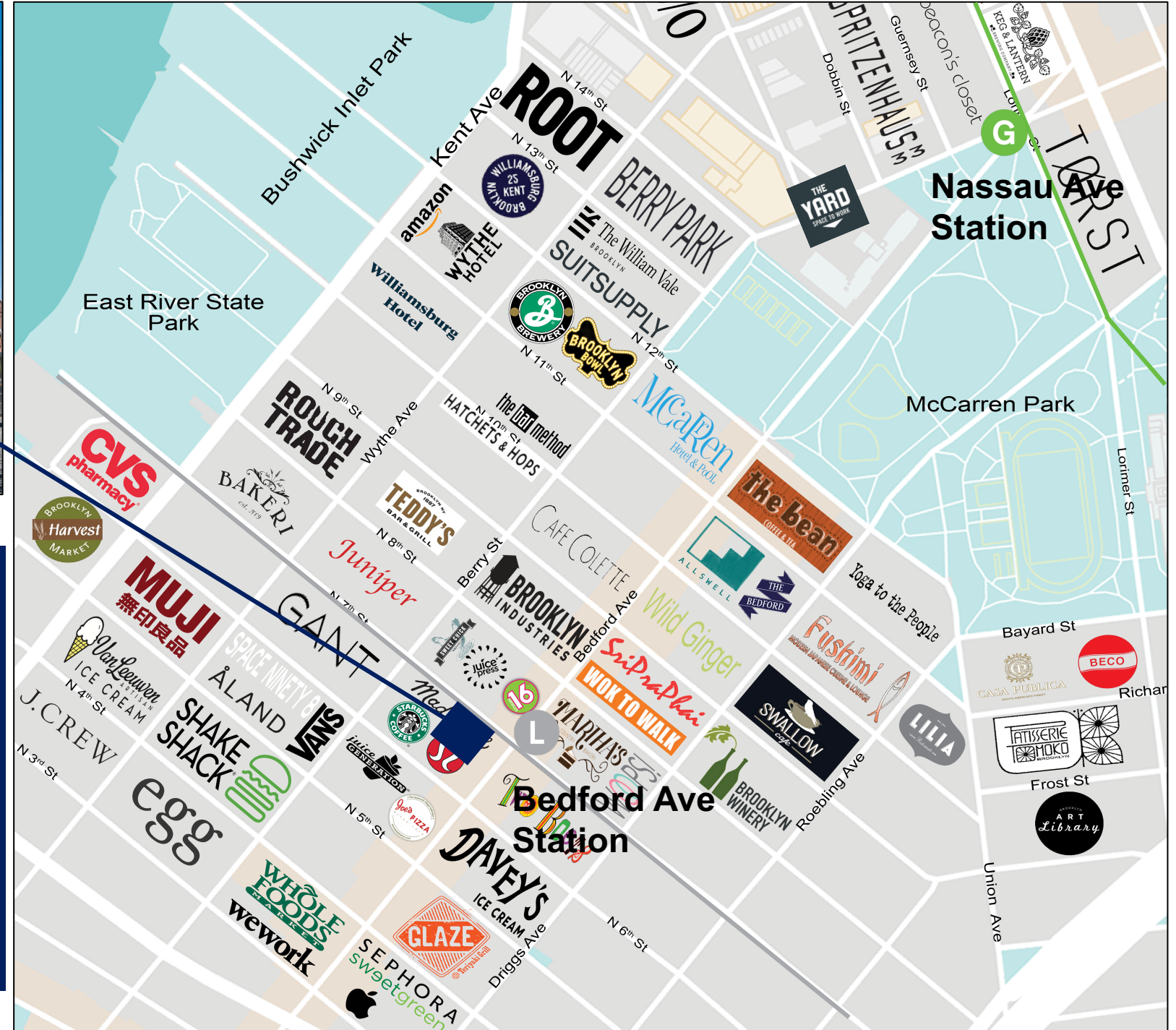




# 154 North 7<sup>th</sup> Street

Williamsburg, Brooklyn, NY

## Retail Map



**Annual Subway Ridership**

- L** train **Bedford Avenue** station is directly outside with 9,892,516 annual ridership
- G** train is 0.6 miles away at **Nassau Avenue** station with 2,880,235 annual ridership