



Medical Office Condominiums Sale or Lease

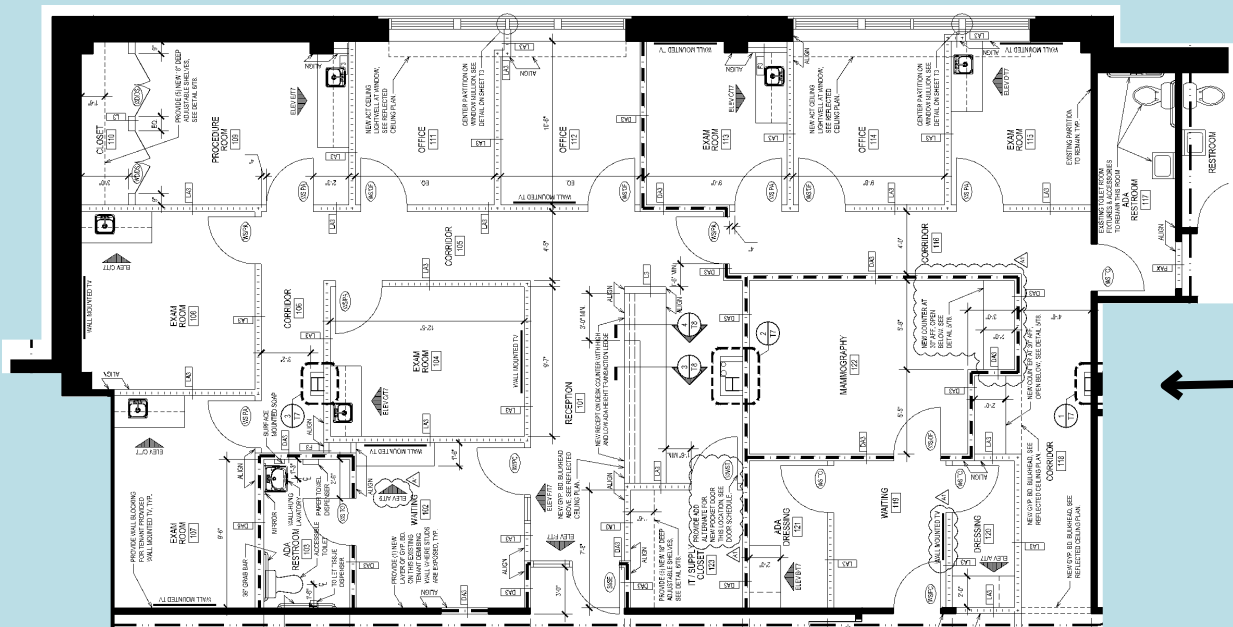
7625 Maple Lawn Blvd
Fulton MD, 20759

- Unit 60: 1,353 sf condo for sale \$507,375
- Unit 50: 2,586 sf condo for sale \$871,482
- Unit 40: 9,226 sf space for lease \$36 psf plus utilities and cleaning

Units are on the lower level, the elevator served floor has high ceilings and glass entries, abundant parking

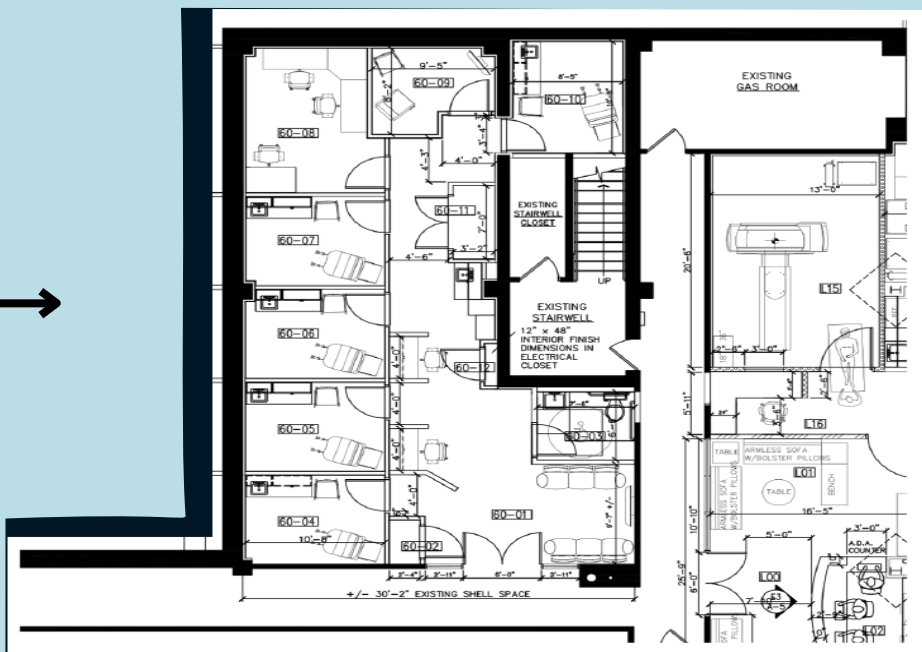


For Sale



Unit 50
2,586 SF
\$871,482

Unit 60
1,353 SF
\$507,375



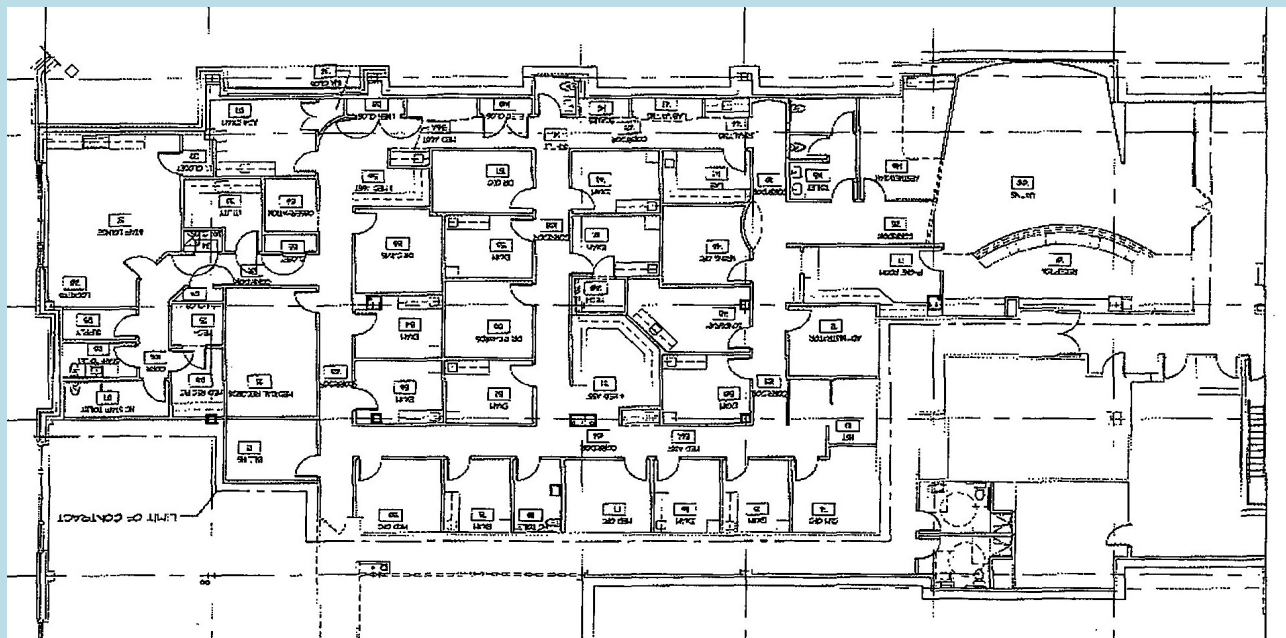
Rob Freedman
 Managing Director
rob.freedman@jll.com
 +1 410 952 9444

Dominic Digiovannantonio
 Vice President
dom.digi@jll.com
 +1 443 452 1505

For Lease

Unit 40
9,226 sf

↙ \$36 psf



Property Specifications

- UPS System available
- Double door glass entryway - right off the elevator
- High ceilings
- Additional space available
- Abundant parking

Rob Freedman

Managing Director

rob.freedman@jll.com

+1 410 952 9444

Dominic Digiovannantonio

Vice President

dom.digi@jll.com

+1 443 452 1505