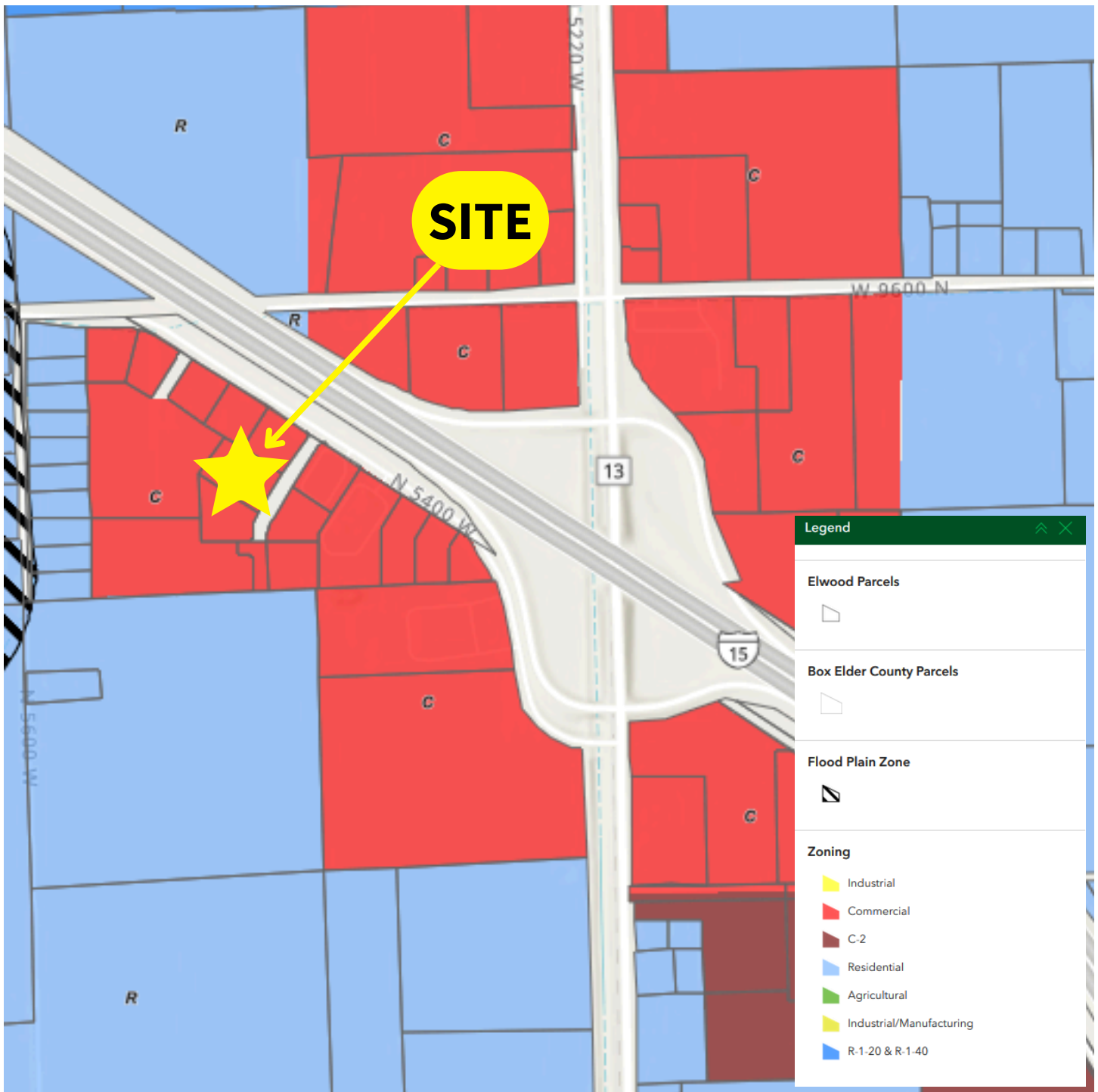


Elwood Town Zoning



* This graphic and zoning information is provided as a courtesy and remains the property of Elwood Town. User is advised to verify all information.

§ 155.125 PERMITTED AND CONDITIONAL USES BY ZONES.

The table in § 155.126 shows all land uses which are allowed within the city. The following criteria should be used to interpret the use listed in the table.

(A) Uses identified with a “P” designation are determined as a “permitted use” and are required to receive approval as a permitted use as identified by the requirements of this subchapter.

(B) Uses identified with a “C” designation are determined as a “conditional use” and are required to receive approval as a conditional use as identified by the requirements of this subchapter.

(C) Any use which is not specifically designated as a permitted or conditional within any specific zone is prohibited in that zone.

(D) All uses must comply with applicable local, state, and federal requirements and licensing and must provide evidence of such compliance before the use is either approved by the city or established within the city.

(Ord. 2008-001, passed - -2008) Penalty, see § 155.999

§ 155.126 SCHEDULE OF USES

[illegible]

Materials sales yard (including the sale of coal, fuel, lumber, rock, sand, gravel, and the like, as an incidental part of the main business, but excluding concrete mixing, except as such concrete mixing is necessary in the preparation and manufacture of any of the products specified in this section)									C
Meat products (cutting, smoking, curing, and packing) - provided that no objectionable fumes are emitted - excludes slaughtering						C	C	C	C
Medical and dental clinic; doctors' and dentists' offices						P	P	P	P
Medical cannabis pharmacy (see § 155.127)									
Medical cannabis production establishment (see § 155.127)									
Miniature golf course, commercial						C	C	C	
Mobile home park									
Monument work								P	P
Mortuary							P	P	P
Motion picture studio							C	P	P
Outdoor recreation dude ranch/family vacation ranch	P					C	C	C	
Packaging and mailing (sales/services)						P	P	P	P
Parking lot (not incidental to a use conducted on the premises)							C	C	P
Parking structure							C	C	P
Pawn shop							P	P	C
Pharmacy (stand-alone/not part of retail store)						C	C	C	
Power generation							C	C	C
Printing (including engraving and photo engraving, blueprinting, photo stating and duplicating)								P	P
Private park, playground or recreation area (requiring membership)	C	C	C	C	C	C	C	C	C
Private recreational camp or resort	C					C	C	C	
Professional office						P	P	P	P
Public building	P	P	P	P	P	P	P	P	P
Public cellular, radio and television transmitting towers	C					C	C	C	C

Public or quasi-public facilities, essential service facilities	C	C	C	C	C	C	C	P	P
Public park, recreation grounds and associated buildings	P	P	P	P	P	P	P	P	
Public stable, riding academy, riding ring, horse show barn or other equestrian facilities under single management	P						C	C	C
Public utility substation or water storage reservoir developed by a public agency	C	C	C	C	C	C	C	P	P
Reception center	C					C	C	C	
Recreational coach park									
Recreational facility beer retailer (e.g. club house)						C	C	C	
Recycling collection and processing center								C	C
Residential: condominium									
Residential: multi-family dwellings									
Residential: planned residential unit development	C	C	C	C	C	C	C	C	C
Residential: single-family	P	P	P	P	P	C			
Residential: single-family agricultural uses	P	P	P	P	P	C			
Residential: single-family townhouse									
Restaurant, fast food establishment						P	P	P	P
Restaurant, no alcohol sales and consumption						P	P	P	P
Restaurant, with on-premises alcohol sales and consumption						P	P	P	P
Retail department or specialty store (no outside storage or display)						P	P	P	P
Retail department or specialty store (with outside storage or display)						C	C	C	C
Retail feed store (no onsite processing)						P	P	P	P
Salon						P	P	P	
Sand blasting									P
School, charter	P	P	P	P	P	P	P	P	C
School, private	C	C	C	C	C	P	P	P	C
School, public	P	P	P	P	P	P	P	P	C
Self-storage facility						C	C	C	C
Sexually-oriented business									
Showroom (indoor)							P	P	P
Showroom (outdoor)								C	C
Animal slaughtering and processing									
Sign painting shop								C	P
State liquor store/alcohol outlet - consumed off-premises									
Substations or transmission lines	C					C	C	C	C

Supermarket/grocery store						C	P	P	P
Tattoo establishment							C	C	C
Tavern/bar/pub									
Theater (indoor)						C	C	C	
Theater (outdoor)								C	
Tire retreading and/or vulcanizing									P
Tire sales and maintenance							C	P	P
Tobacco/vape shop							C	C	C
Trade or vocational school						P	P	P	C
Upholstering (including mattress manufacturing, rebuilding and renovating)									P
Veterinary hospital (small animals only and provided conducted within completely enclosed building)	C					C	C	P	P
Veterinary hospital or clinic (indoor holding of animals)	C						C	C	C
Veterinary hospital or clinic (outdoor holding of animals)	C							C	C
Warehouse/distribution								C	P
Wholesale business							C	C	P

(Ord. 2024-005, passed 7-9-2024)