



***For Lease***

**Steve Hooker**  
**work: 435.649.1129**  
**cell/text: 801.509.3560**

**East Wing Plaza 2**  
**208 North 2100 West**  
**Salt Lake City, Utah 84116**

## Property Highlights

- 5,705 SF Available
- First floor lobby presence
- \$21.50/SF MG
- 3.5/1000 SF Parking Ratio
- 1-215 Freeway Visibility
- 5 Minutes from Salt Lake International Airport
- 11 minutes from Downtown Salt Lake City
- Walking distance from TRAX

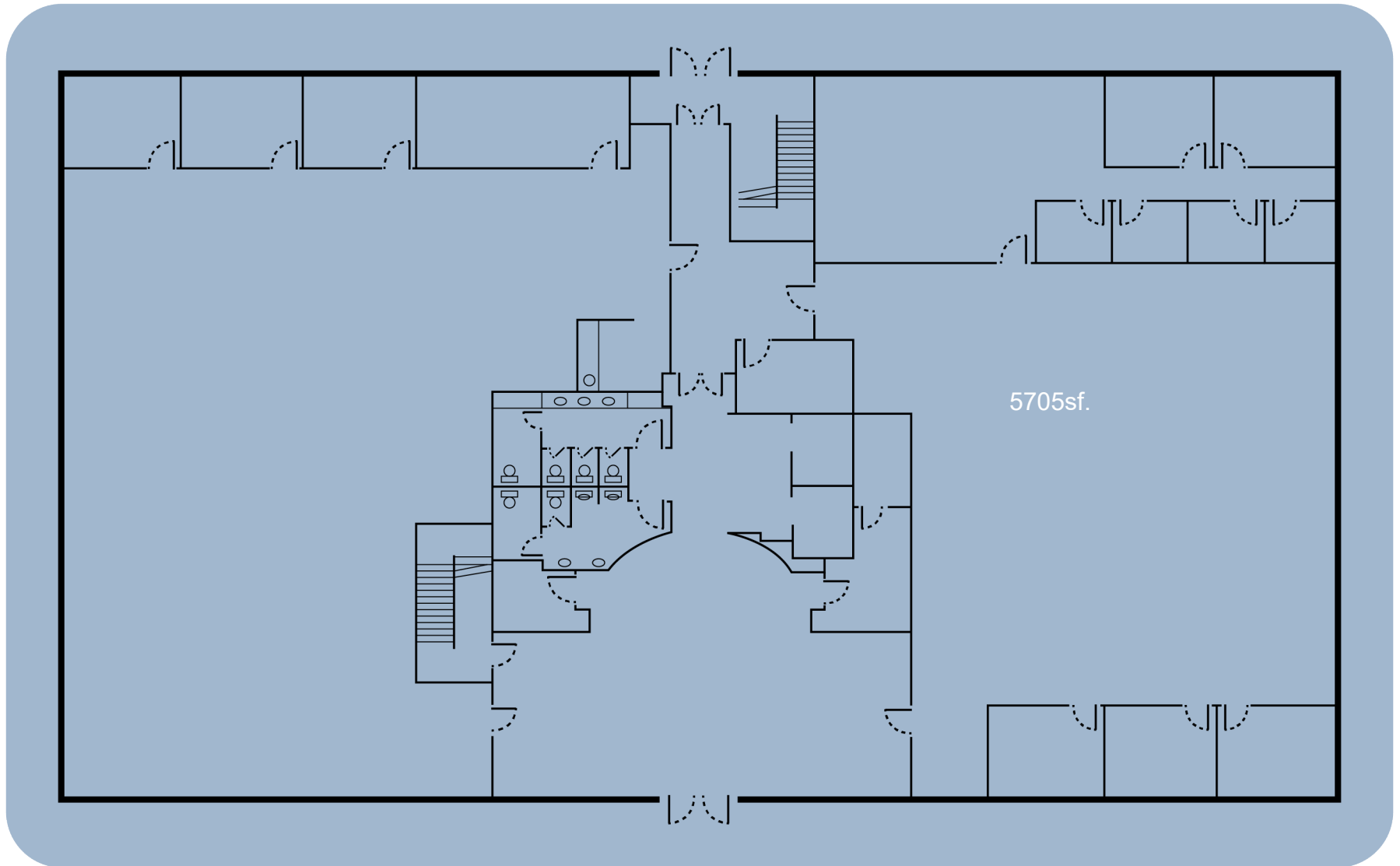


2750 Rasmussen Road, Suite 100, Park City, UT  
Steve Hooker | 435.649.1129 | shooker@acme-cre.com  
acme commercial real estate





2750 Rasmussen Road, Suite 100, Park City, UT  
Steve Hooker | 435.649.1129 | [shooker@acme-cre.com](mailto:shooker@acme-cre.com)  
acme commercial real estate



2750 Rasmussen Road, Suite 100, Park City, UT  
Steve Hooker | 435.649.1129 | [shooker@acme-cre.com](mailto:shooker@acme-cre.com)  
acme commercial real estate



**Salt Lake City  
Interational Airport**



**208 North 2100 W**  
Salt Lake City, UT 84116



**Downtown  
Salt Lake City**



**2750 Rasmussen Road, Suite 100, Park City, UT**  
**Steve Hooker | 435.649.1129 | shooker@acme-cre.com**  
**acme commercial real estate**

Acme Commercial Real Estate Copyright 2023. No warranty or representation, express or implied, is made to the accuracy or completeness of the information contained herein, and same is submitted subject to errors, omissions, change of price, rental or other conditions, withdrawal without notice, and to any special listing conditions imposed by the property owner(s). As applicable, we make no representation as to the condition of the property (or properties) in question.