

OFFERING SUMMARY

Lease Rate:	\$0.85 - 1.00 SF/month (NNN)
Building Size:	67,005 SF
Available SF:	1,250 - 2,000 SF
Year Built:	1978

PROPERTY OVERVIEW

Airport Business Park is located in close proximity to Highway 22, Salem Airport, Interstate 5, and Downtown Salem. Ideal uses are small warehouse or storage space, retail, or office / flex space.

PROPERTY HIGHLIGHTS

- - Triple Net Lease
- - Great Visibility
- - Easy access to Interstate 5 and Highway 22
- - Across the street from Salem Airport
- - Cams = \$0.20 / SF/ month

SPACES	LEASE RATE	SPACE SIZE
1717 25th St SE	\$0.85 SF/month	2,000 SF
2001 25th St SE	\$1.00 SF/month	1,250 SF

MATT HOLSTEGE

503.371.0718
mholstege@stateinv.com

DANIELLE FRANCISCO

503.371.0745
dfrancisco@stateinv.com

Notice: Employees of State Investments LLC are not licensed real estate brokers or property managers.

AIRPORT BUSINESS PARK

2001 25TH STREET SE, SALEM, OR 97302



MATT HOLSTEGE

503.371.0718

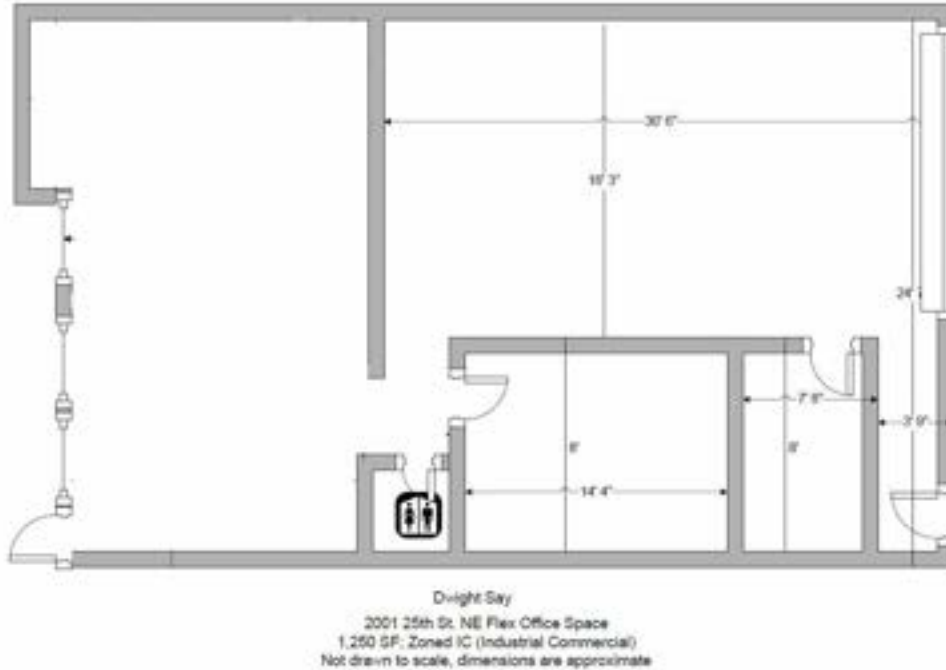
mholstege@stateinv.com

DANIELLE FRANCISCO

503.371.0745

dfrancisco@stateinv.com

Notice: Employees of State Investments LLC are not licensed real estate brokers or property managers.



LEASE INFORMATION

Lease Type:	NNN	Lease Term:	Negotiable
Total Space:	1,250 - 2,000 SF	Lease Rate:	\$0.85 - \$1.00 SF/month

AVAILABLE SPACES

SUITE	TENANT	SIZE (SF)	LEASE TYPE	LEASE RATE	DESCRIPTION
2001 25th St SE	Available	1,250 SF	NNN	\$1.00 SF/month	This 1,250 SF space is currently in semi-shell condition. See floor plan. Uses could include retail, office / flex space. Tenant Improvements are negotiable. Close proximity to Highway 22, Salem Airport, Interstate 5, and Downtown Salem.

MATT HOLSTEGE

503.371.0718
mholstege@stateinv.com

DANIELLE FRANCISCO

503.371.0745
dfrancisco@stateinv.com

Notice: Employees of State Investments LLC are not licensed real estate brokers or property managers.