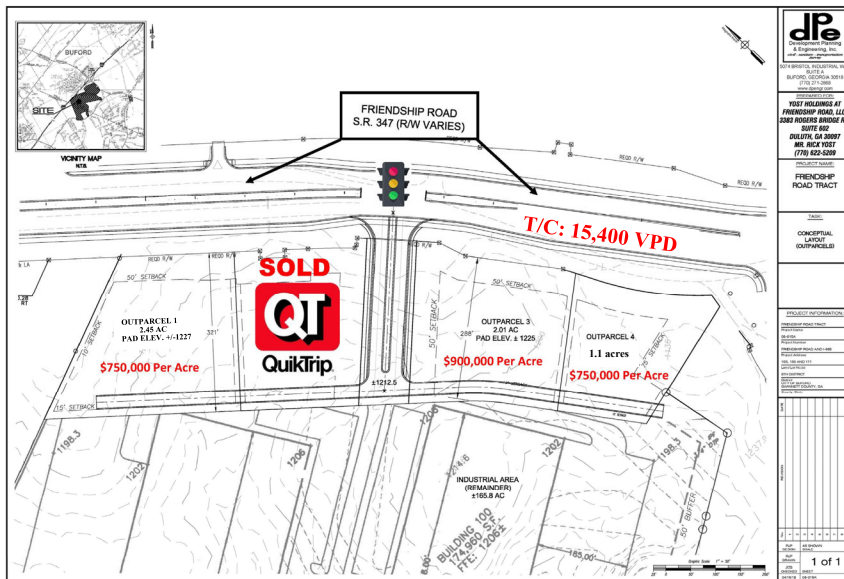




# (3) OUTPARCELS FOR SALE

## 1.1 - 3.1 ACRES

**FRIENDSHIP ROAD @ I-985, BUFORD, GA 30519**  
**\$750,000 - \$900,000 Per Acre**



PROJECT INFORMATION PROJECT NO. 1770-100-0000 DATE 08/11/2017 DRAWN BY: J. HOLLIER CHECKED BY: J. HOLLIER PROJECT LOCATION: FRIENDSHIP RD. @ I-985, BUFORD, GA 30519	
CONCEPTUAL LAYOUT (OUTPARCELS)	
1 of 1	

### Property Information

- (3) Outparcels For Sale on Friendship Rd. at I-985
- Zoned C-2 (Retail)
- Pad Graded Building Sites
- Outparcel Lines are Changeable
- All Utilities to Sites
- Shared Off-Site Detention
- Buford City Limits-Hall County
- T/C: Friendship Rd.- 15,400 VPD  
I-985 - 69,000 VPD
- Excellent Sites for Restaurants, Retail, Fuel/Convenience and Hotel Uses

### Area Retailers

- Publix, McDonald's, Wendy's, Zaxby's, Starbucks, QuikTrip, Circle K, UPS Store, Verizon, Suntrust, Truist, Holiday Inn Express

**For Information Call:**  
**PHILIP HOLLIER**  
**770-814-0061**  
[philip@nygaardproperties.com](mailto:philip@nygaardproperties.com)  
[www.nygaardproperties.com](http://www.nygaardproperties.com)