



1538 20th STREET

SANTA MONICA, CA 90404

Creative Office For Lease
± 3,750 SF

PREMISES

± 3,750 SF

OCCUPANCY

Immediate

PARKING

10 Parking Spaces

(\$130.00 per space per month)

FEATURES

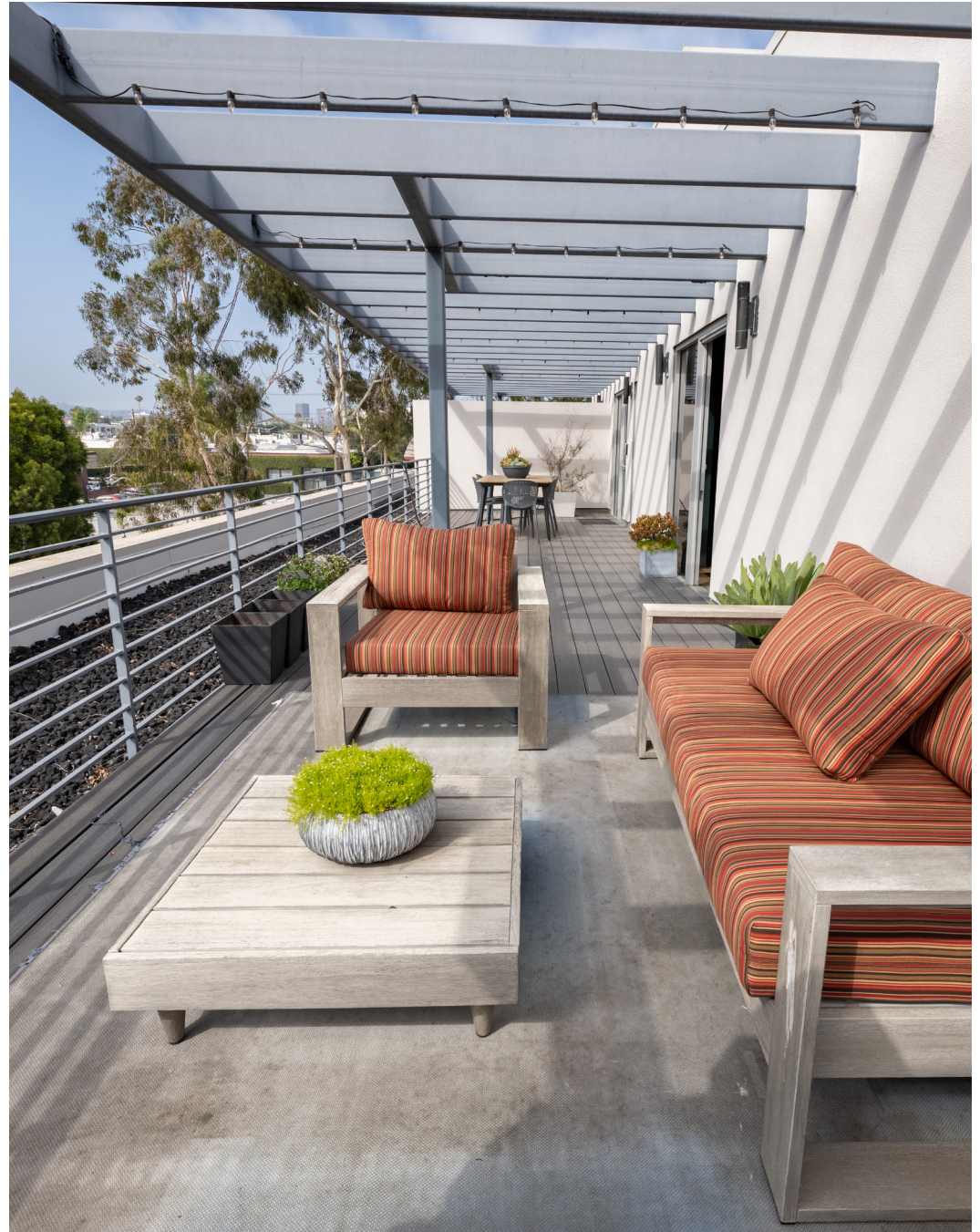
- Positioned within one of Santa Monica's most dynamic business neighborhoods
- Versatile indoor-outdoor environment suited for entertaining and everyday operations.
- Shared balcony overlooking the city
- Operable windows throughout
- Convenient access to the Metro E Line
- Exposed ceilings and light-filled interiors throughout
- Four enclosed offices offering privacy and functionality
- Expansive collaborative workspace with adaptable layout potential
- Full-service kitchen equipped with stainless steel appliances and abundant cabinet storage

RENT

\$3.95/SF, NNN (\$0.70/sf)

TERM

2 - 10 Years

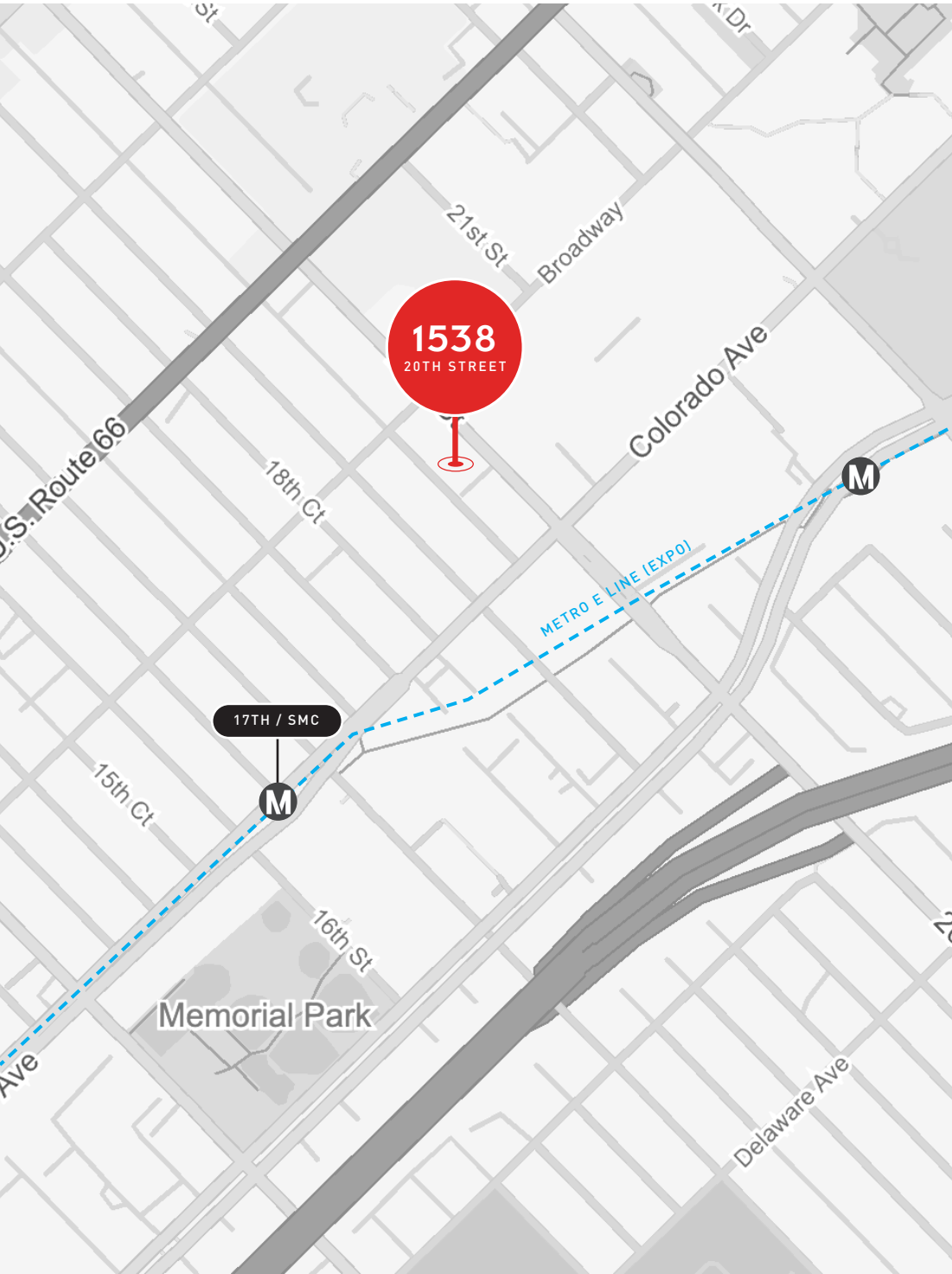












EREWHON



THE BRIXTON



GOODBOYBOB
COFFEE ROASTERS



Café LOVI



IRON
FITNESS



TARTINE



Gelson's

TRADER JOE'S



BLUEYS
KITCHEN

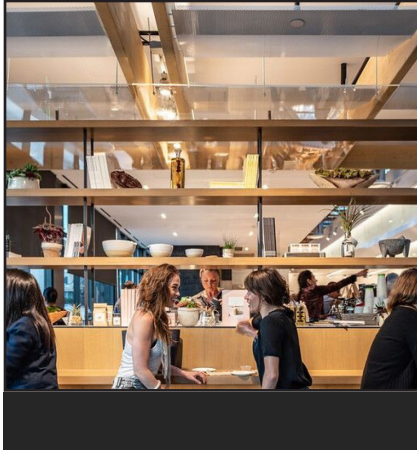
CHAUMONT

CHEZ MIMI

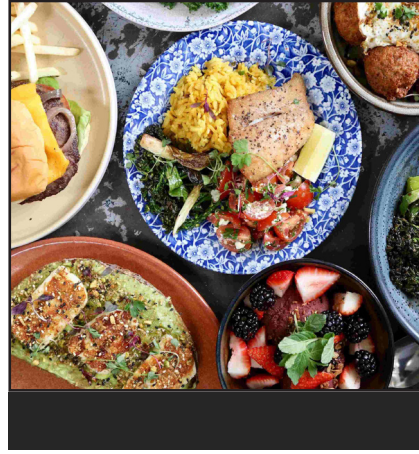


SANTA MONICA
PROPER
HOTEL

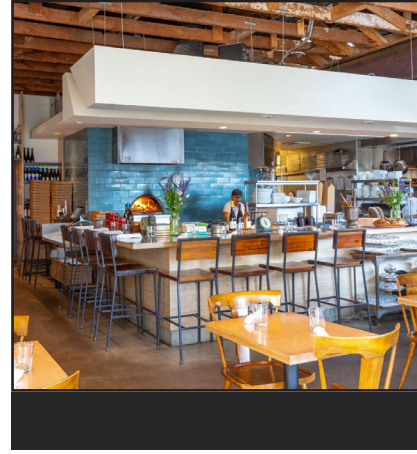




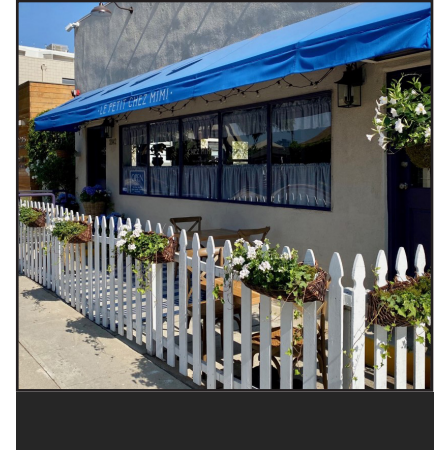
Erewhon Santa Monica is a premier organic market offering elevated groceries, prepared foods, and a refined wellness experience.



Bluey's Kitchen is a relaxed neighborhood spot for fresh, locally sourced food and great coffee, from weekday mornings to weekend brunch.



Milo + Olive brings together handcrafted breads, rustic pastries, and classic and seasonal pizzas made with organic, farmers' market ingredients in a warm, all-day neighborhood setting.



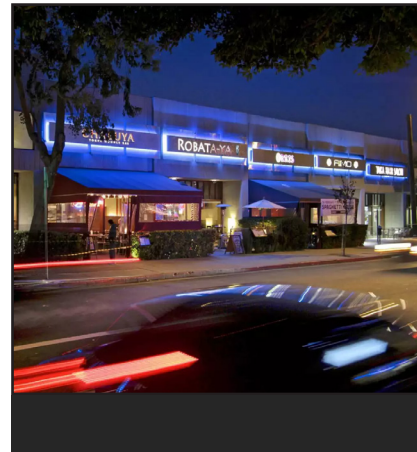
Le Petit Chez Mimi is a charming, family-run bistro serving homestyle French country fare in an unfussy, compact space.



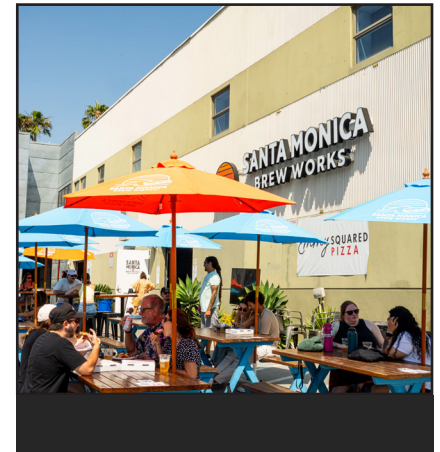
Petitgrain Boulangerie by the sea specializes in croissants, french and mexican pastries baked with california's best grains and produce.



Santa Monica Proper Hotel offers stylish rooms, world-class dining, rooftop views, and lively communal spaces, creating a vibrant coastal escape in the heart of the city.



Sawtelle Japantown is a lively cultural district known for its diverse food scene, eclectic shops, and a vibrant blend of traditions and modern urban culture.



Santa Monica Brew Works is a craft brewery in Santa Monica known for its innovative small-batch beers, relaxed tasting room, and community-focused atmosphere.



George Wilson

PRINCIPAL
gwilson@leewestla.com
310.899.2738
DRE: 02090678

Lindsay Shuford

ASSOCIATE
lshuford@leewestla.com
310.899.2710
DRE: 02231518