



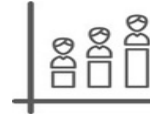
**circa PROPERTIES**  
THE ART OF PARTNERSHIP



PROFESSIONAL OFFICE SPACES FOR LEASE  
7905 Big Bend Blvd, Webster Groves, MO 63119

# THE SPACE

Location	7905 Big Bend Blvd Webster Groves, MO 63119
County	Saint Louis



## POPULATION

1.00 MILE	3.00 MILE	5.00 MILE
12,976	127,987	338,015



## MEDIAN HOUSEHOLD INCOME

1.00 MILE	3.00 MILE	5.00 MILE
\$97,300	\$86,051	\$82,282



## NUMBER OF HOUSEHOLDS

1.00 MILE	3.00 MILE	5.00 MILE
5,477	60,590	156,006

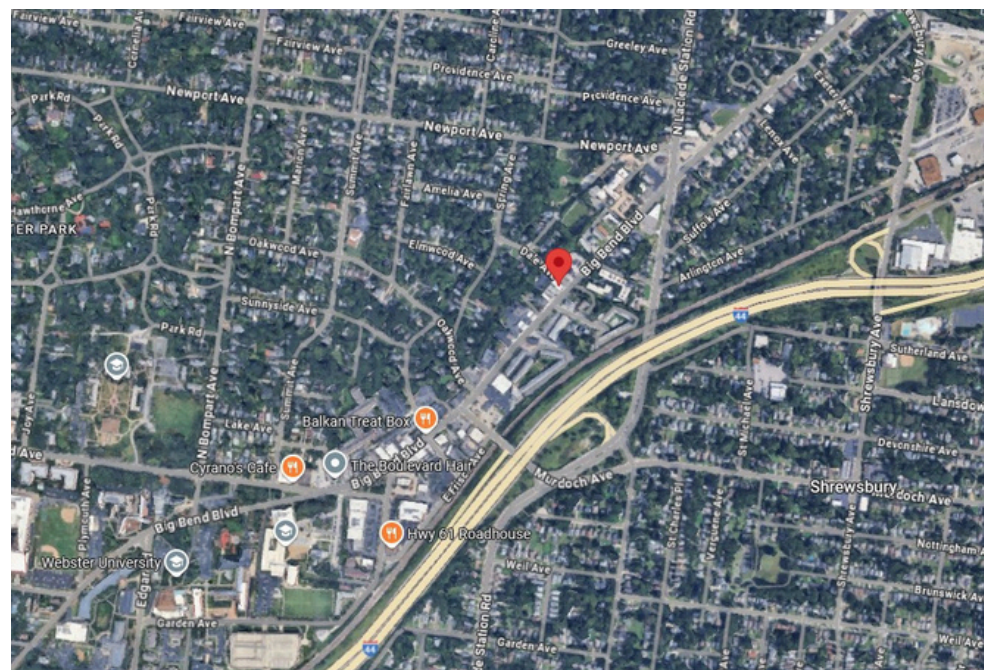
Suite	Tenant	Lease Type	Notes
200	Leased		
201	Available	Full Service	\$800/mo
202	Available	Full Service	\$550/mo
203	Leased		
205	Leased		
206	Available	Full Service	\$800/mo

## Flexible

- Turnkey private offices
- 12 month lease terms
- Full service lease includes all utilities
- Controlled 24-hour access
- Immediate move-in available

## Features

- Ample free parking
- Easy access and excellent drive times
- Walkable area near Webster University



Drive Time Map

