

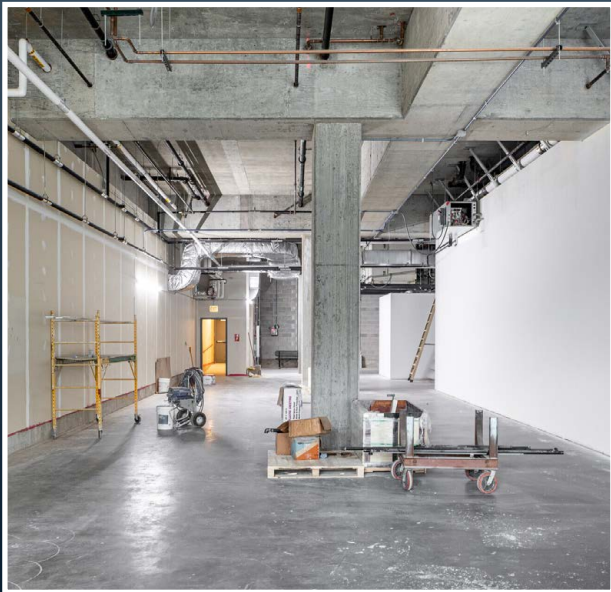
FOR LEASE | ROGERS PARK RETAIL

6418 N Sheridan Rd

CHICAGO, IL



2,929 SQUARE FEET AVAILABLE IMMEDIATELY



PROPERTY DESCRIPTION

2,929 SF Retail Space in the Heart of Loyola University District

Rarely available 2,929 square feet of prime retail space located directly on Sheridan Road, in one of the busiest and most vibrant corridor off Rogers Park. This highly visible storefront sits among dozens of national retailers and benefits from constant student and neighborhood foot traffic.

Featuring soaring ceilings in a newer construction and never-before-occupied space, the space is perfectly suited for a **coffee shop, boutique, restaurant, fitness concept, or a variety of retail uses**. With unmatched visibility and a built-in customer base, this is an exceptional opportunity to establish your brand in a thriving urban campus environment.

HIGHLIGHTS

- Heavy foot traffic and over 46,000 daily drivers
- Well located, directly across from Loyola University
- Vanilla Box delivery, ready for the next user
- Long-term neighboring tenants
- High ceilings
- Ideal for **coffee shop, boutique, restaurant, fitness concept, or a variety of retail uses**

LEASE RATE

\$33 NNN

📍 6418 N Sheridan Road
Chicago, IL 60626



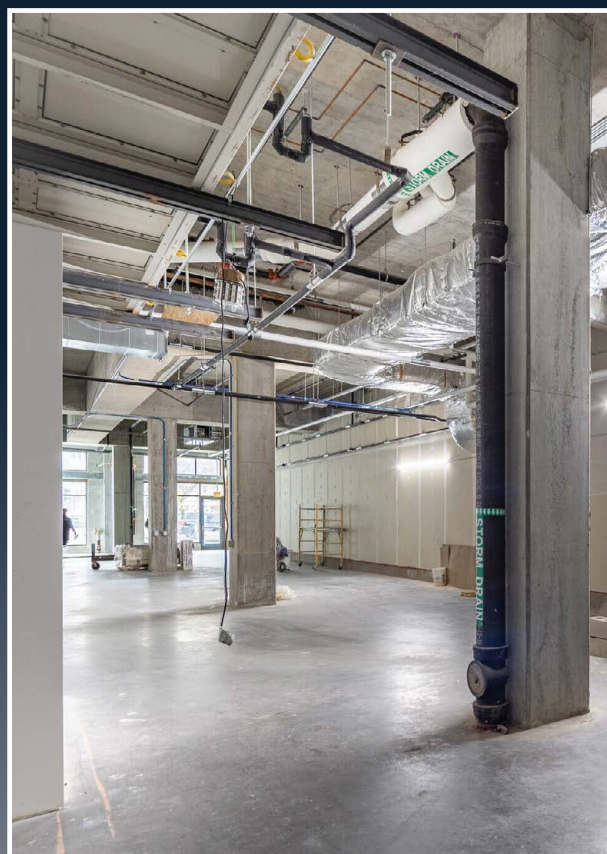
AREA TENANTS

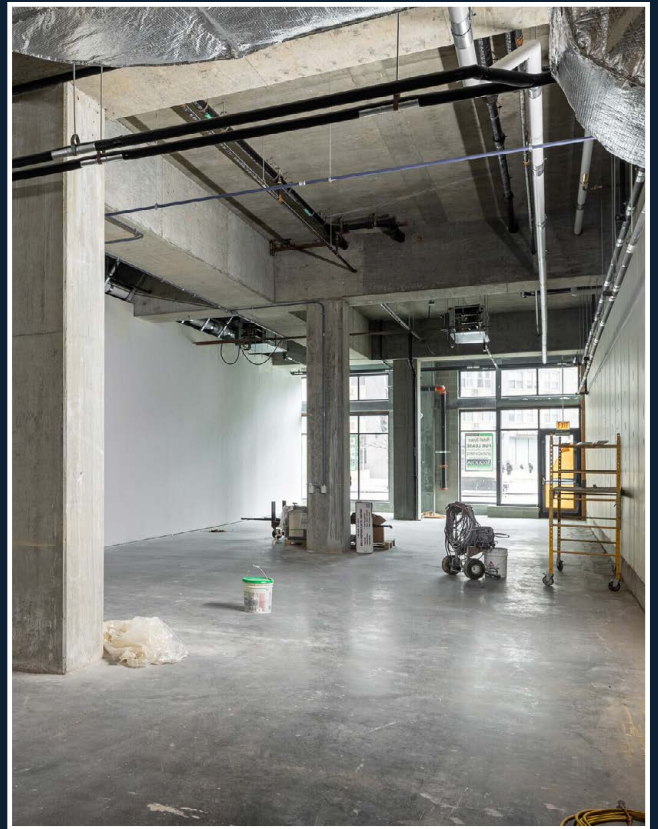
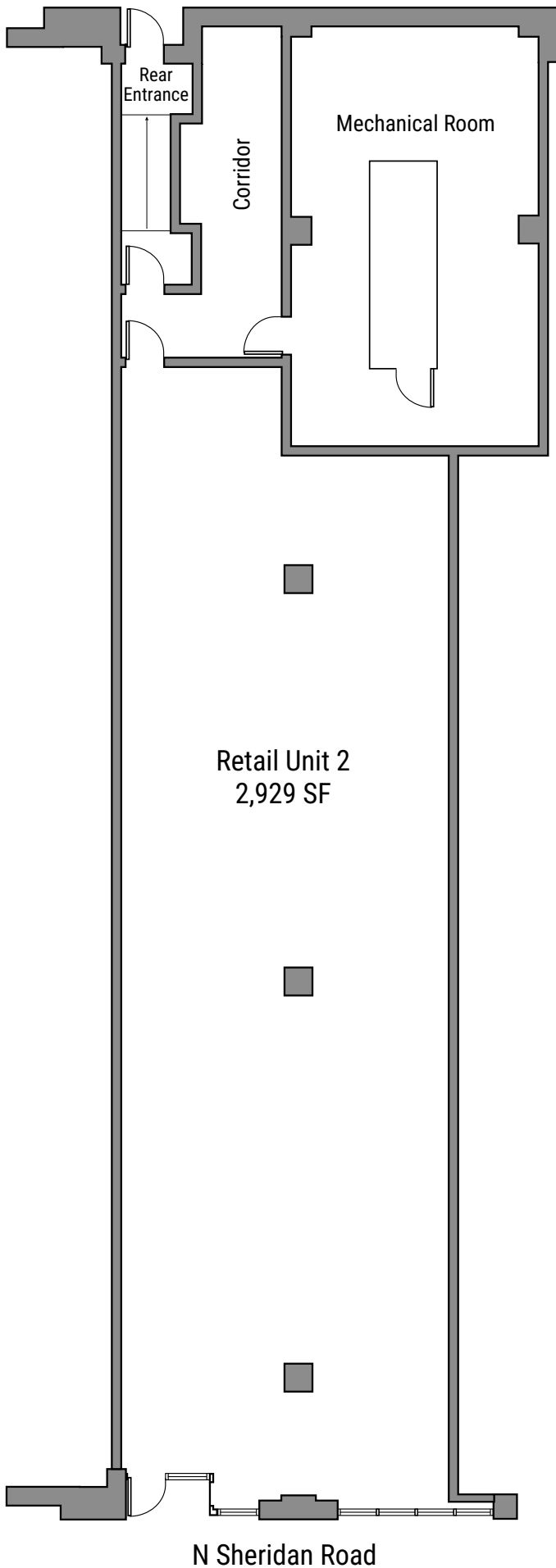
Target
Wintrust Bank
Chase Bank
Starbucks
Loyola University Bookstore

Tropical Smoothie Cafe
Taco Bell
Potbelly
Insomnia Cookies
CVS



QUADREL
COMMERCIAL





QUADREL
COMMERCIAL

ERIC TURRIN


Managing Partner


 eturrin@quadrelcommercial.com

 (317) 372-8727

CHUCK DICKSTEIN

Managing Director

 cdickstein@quadrelcommercial.com

 (847) 651-1470