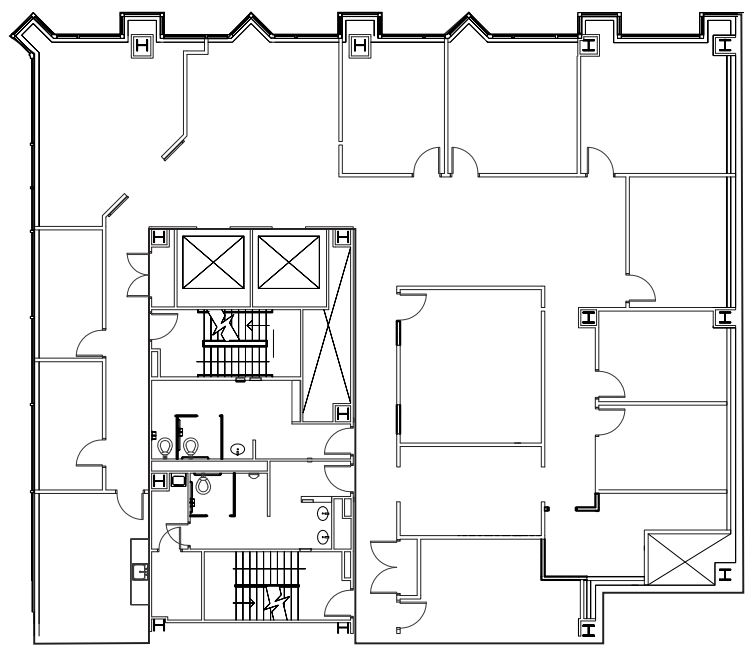




AVAILABILITIES WITHIN three ppg place



SUITE 200

- 5,807 SF
- Move-In Ready
- Full Floor

TRIPP MERCHANT

412-208-8231
Tripp.Merchant@jll.com

JACKIE BEZEK

323-842-5743
Jackie.Bezek@jll.com

Although information has been obtained from sources deemed reliable, neither Owner nor JLL makes any guarantees, warranties or representations, express or implied, as to the completeness or accuracy as to the information contained herein. Any projections, opinions, assumptions or estimates used are for example only. There may be differences between projected and actual results, and those differences may be material. The Property may be withdrawn without notice. Neither Owner nor JLL accepts any liability for any loss or damage suffered by any party resulting from reliance on this information. If the recipient of this information has signed a confidentiality agreement regarding this matter, this information is subject to the terms of that agreement. ©2022 JonesLang LaSalle IP, Inc. All rights reserved.



THREE PPG PLACE

YOUR PIECE OF A

PITTSBURGH ICON

THREE

PPG PLACE

LEASING & MANAGEMENT BY:

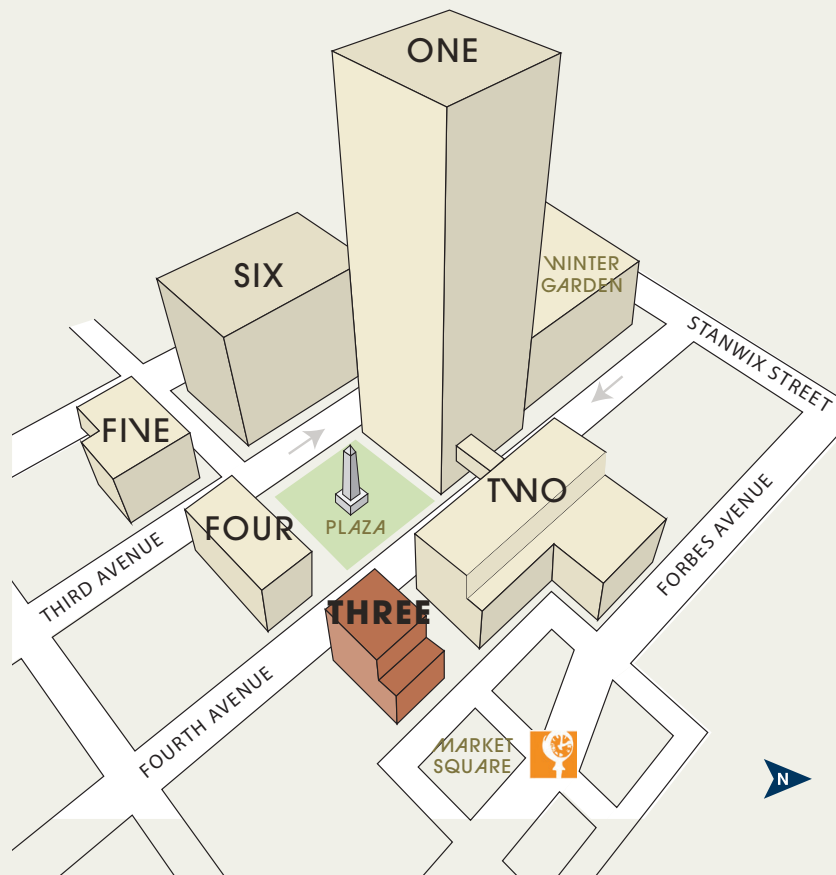


OWNED BY:



THREE PPG PLACE

At six stories high, Three PPG Place offers a rare opportunity for smaller firms to occupy a full floor providing customizability and exclusive control of space.



\$72M+ in building and capital improvements to the complex since 2011

700 space underground parking garage integrated within the complex. **\$1.4M** garage renovation completed in July 2021 with new SmartPark technology

Newly renovated building lobby

5,000sf fully-equipped conference center, *Spark*, available for tenant only use

A new **state-of-the-art full-service fitness facility**, *Velocity*, now open

Secure bike rack room with provided maintenance tools

Courtesy shuttle available for customer use

Outdoor plaza seating with a unique, interactive water display during summer

Renovated and enlarged outdoor skating rink, a Pittsburgh winter tradition featuring a new state-of-the-art, energy efficient LED-lit holiday tree

\$3M renovation to enclosed solarium, "Wintergarden", host to many special events

8 on-site dining options, ranging from fine dining to fast casual

1 block from Gateway "T" Station and convenient to all major highways

Superior location at the forefront of Downtown

Connected to vibrant Market Square and all of its attractions



UNIQUELY POSITIONED

Located in the northeast cornerstone of the complex, Three PPG Place serves as the connection between Market Square and PPG Place's public plaza.