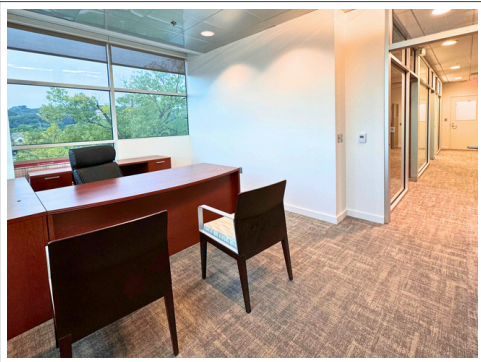


EXECUTIVE SUITES FOR RENT

4TH FLOOR OF THE VCC BUILDING

1 INFORMATION WAY, LITTLE ROCK AR 72200

P4
Realty Group



5 Private Executive Offices, 3 Cubicles



Shared space break room & outdoor patio



Minutes away from numerous restaurants & downtown Little Rock

Discover premium executive offices for rent in Little Rock's Riverdale neighborhood, featuring stunning views and modern amenities.

Enjoy updated, professional workspaces in a vibrant area close to private and government businesses, as well as popular restaurants and attractions. Elevate your business in this dynamic and picturesque location.



GEORGE PETROV

George@P4RealtyGroup.com
501.413.3664

FLOOR PLAN / PRICING

Executive offices on the fourth floor offer stunning views of the Arkansas River or a picturesque private canal. Choose from 5 modern glass offices, available for individual or multiple rentals. Enjoy a shared breakroom, lounge, and outdoor patio, creating an ideal space for productivity and relaxation.



PRICE BY OFFICE

- Office 470
 - 109 sqft - \$675/mo
- Office 471A
 - 169 sqft - \$1,000/mo
- Office 471
 - 115 sqft - \$700/mo
- Office 472
 - 127 sqft - \$750/mo
- Office 472A
 - 127 sqft - \$750/mo

LOCATION

Located at 1 Information Way in Little Rock's Riverdale neighborhood, these offices offer stunning views of the Arkansas River. Riverdale is a true urban mix of office complexes, retail spaces, restaurants and a variety of residential options, creating the perfect setting for business. Just minutes away from downtown, these executive suites are an ideal location for professionals seeking convenience and connectivity.

P4
Realty Group



CLOSE BY

- Dillard's Corporate Office, 2 mi
- Interstate-30, 3 mi
- Little Rock Zoo, 3 mi
- Arkansas State Capitol, 3 mi
- River Market District, 3.5 mi
- Statehouse Convention Center, 3.5 mi
- Clinton Presidential Center, 3.8 mi
- Simmons Bank Arena - 4 mi
- Interstate-630, 4.5 mi
- Clinton National Airport - 7.6 mi