



INDUSTRIAL WAREHOUSE FOR LEASE

7120-7132 AMBASSADOR ROAD
WINDSOR MILL, MARYLAND 21224



Faropoint



Chris Boland | Vice President

☎ 410.494.6644 ✉ cboland@mackenziecommercial.com

Mackenzie Commercial Real Estate Services, LLC • 410-821-8585 • 2328 W. Joppa Road, Suite 200 | Lutherville-Timonium, Maryland 21093 • www.MACKENZIECOMMERCIAL.com

Patrick Smith, SIOR | Vice President

☎ 410.494.4866 ✉ psmith@mackenziecommercial.com

FOR LEASE

Baltimore County, MD

RUTHERFORD BUSINESS CENTER

7120-7132 AMBASSADOR ROAD | WINDSOR MILL, MARYLAND 21244



AVAILABLE - 4,145-15,115 SF

Suite 7128: 6,628 SF

Office: 1,500 SF

Loading: 1 dock, 1 ramped drive-in

Suite 7130: 4,342 SF

Office: 2,422 SF

Loading: 1 dock

Suite 7132: 4,145 SF

Office: 673 SF

Loading: 1 dock, 2 drive-ins (1 oversized drive-in)

Lot: 1 acre

BUILDING SIZE

47,531 sf

ZONING

ML (Manufacturing)

HIGHLIGHTS

- ▶ 1 AC lot also available
- ▶ 16' clear height
- ▶ New LED lighting
- ▶ Wet sprinkler system
- ▶ Fully conditioned throughout with brand new units
- ▶ OpEx: \$2.50 PSF
- ▶ New carpet and paint in office



Chris Boland | Vice President

☎ 410.494.6644 ✉ cboland@mackenziecommercial.com

Mackenzie Commercial Real Estate Services, LLC • 410-821-8585 • 2328 W. Joppa Road, Suite 200 | Lutherville-Timonium, Maryland 21093 • www.MACKENZIECOMMERCIAL.com

Patrick Smith, SIOR | Vice President

☎ 410.494.4866 ✉ psmith@mackenziecommercial.com

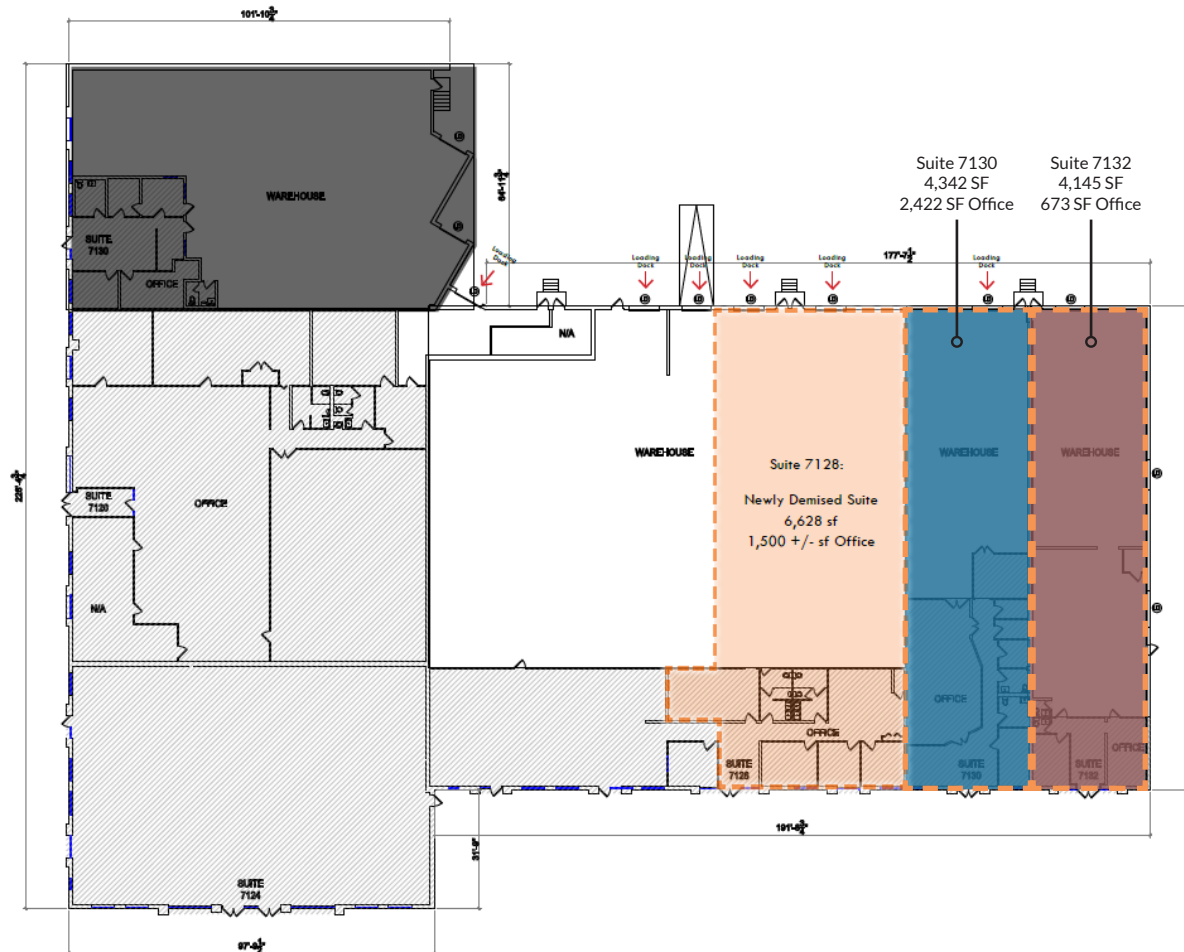
FOR LEASE



Baltimore County, MD

FLOOR PLAN

RUTHERFORD BUSINESS CENTER | 7120-7132 AMBASSADOR ROAD | WINDSOR MILL, MARYLAND 21244

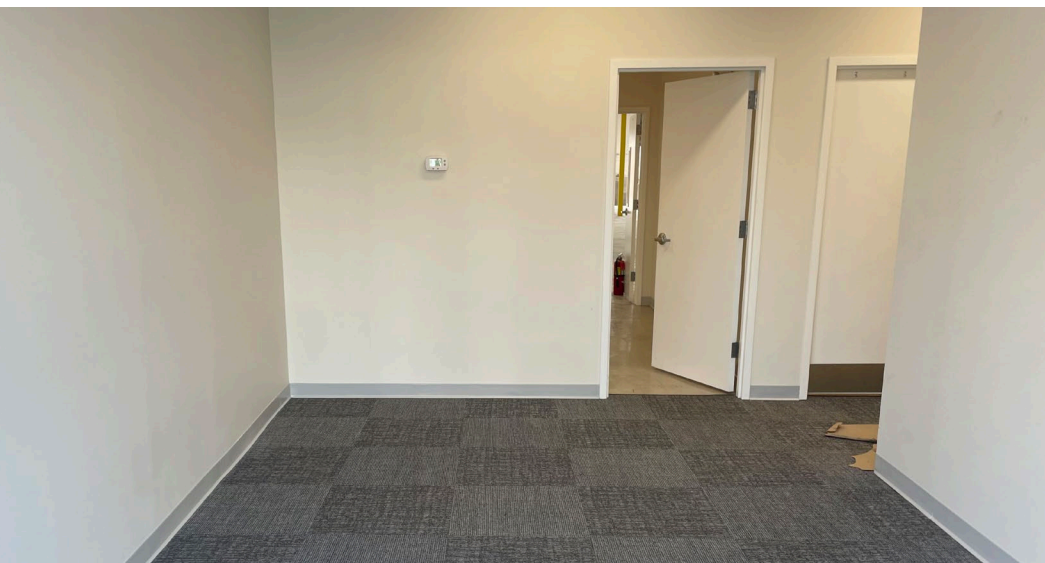


FOR LEASE

 Baltimore County, MD

SUITE 7128 PHOTOS

RUTHERFORD BUSINESS CENTER | 7120-7132 AMBASSADOR ROAD | WINDSOR MILL, MARYLAND 21244



FOR LEASE
Baltimore County, MD

BIRDSEYE

RUTHERFORD BUSINESS CENTER | 7120-7132 AMBASSADOR ROAD | WINDSOR MILL, MARYLAND 21244



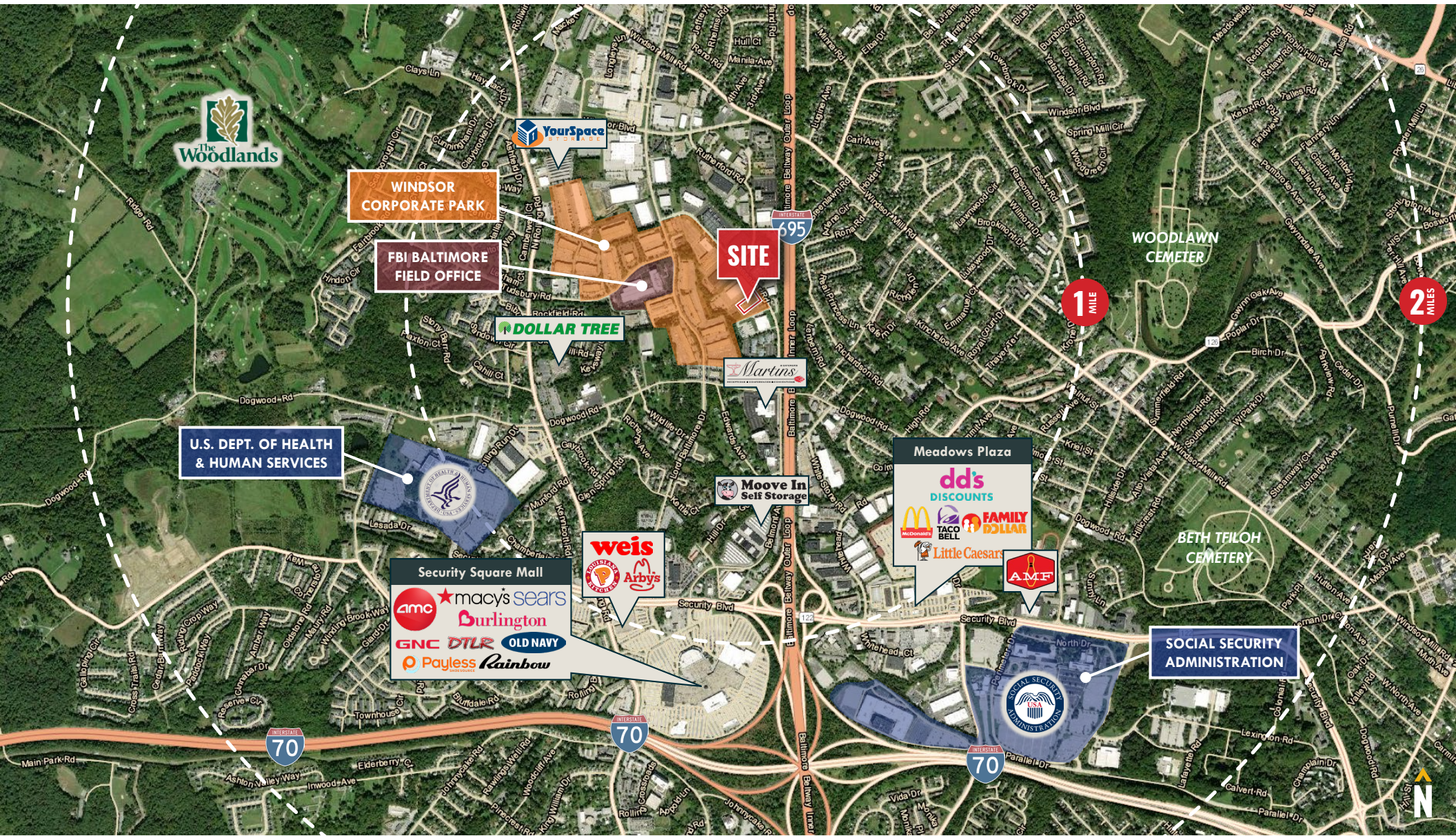
FOR LEASE



Baltimore County, MD

TRADE AREA

RUTHERFORD BUSINESS CENTER | 7120-7132 AMBASSADOR ROAD | WINDSOR MILL, MARYLAND 21244





CHRIS BOLAND

VICE PRESIDENT

MACKENZIE COMMERCIAL REAL ESTATE SERVICES, LLC

410.494.6644

CBOLAND@MACKENZIECOMMERCIAL.COM



PATRICK SMITH, SIOR

VICE PRESIDENT

MACKENZIE COMMERCIAL REAL ESTATE SERVICES, LLC

410.494.4866

PSMITH@MACKENZIECOMMERCIAL.COM

MacKenzie Commercial Real Estate Services, LLC • 410-821-8585 • 2328 W. Joppa Road, Suite 200 | Lutherville, Maryland 21093 • www.MACKENZIECOMMERCIAL.com

No warranty or representation, expressed or implied, is made as to the accuracy of the information contained herein, and same is submitted subject to errors, omissions, change of price, rental or other conditions, withdrawal without notice, and to any specific listing conditions imposed by our principals.