

**+475 ACRES LOCATED  
OFF OF WHITELAND  
ROAD EXIT & I-65**

WHITELAND, INDIANA 46184

**BUILD-TO-SUIT  
SITES AVAILABLE**





# MASTER SITE PLAN

## AVAILABLE BUILDING SPECIFICATIONS

### BUILDING 5

- 180,099 SF
- 40' Clear
- 20 Docks & 1 Drive-In
- Immediate Occupancy

### BUILDING 4B

- 114,660 SF (divisible)
- 32' Clear
- 14 Docks & 2 Drive-Ins
- Immediate Occupancy

### BUILDING 3A

- 219,516 SF (divisible)
- 36' Clear
- 26 Docks & 2 Drive-ins
- Immediate Occupancy

### BUILDING 3B

- 341,512 SF
- 36' Clear
- 36 Docks & 4 Drive-ins
- Built-to-Suit

### BUILDING 3C

- 175,172 SF
- 32' Clear
- 16 Docks & 2 Drive-ins
- Built-to-Suit

### BUILDING 2

- 1,208,400 SF
- 40' Clear
- Build-to-Suit





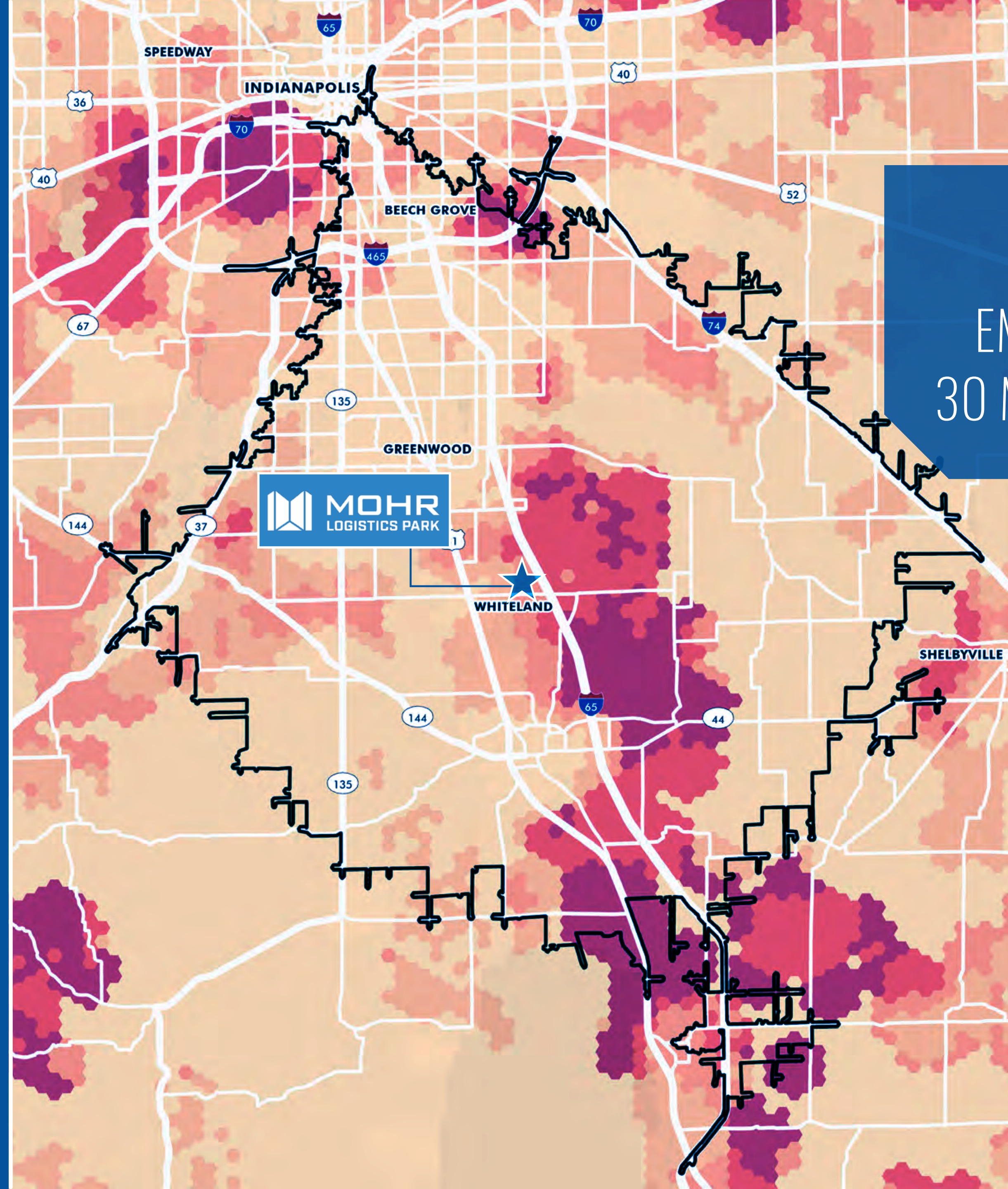
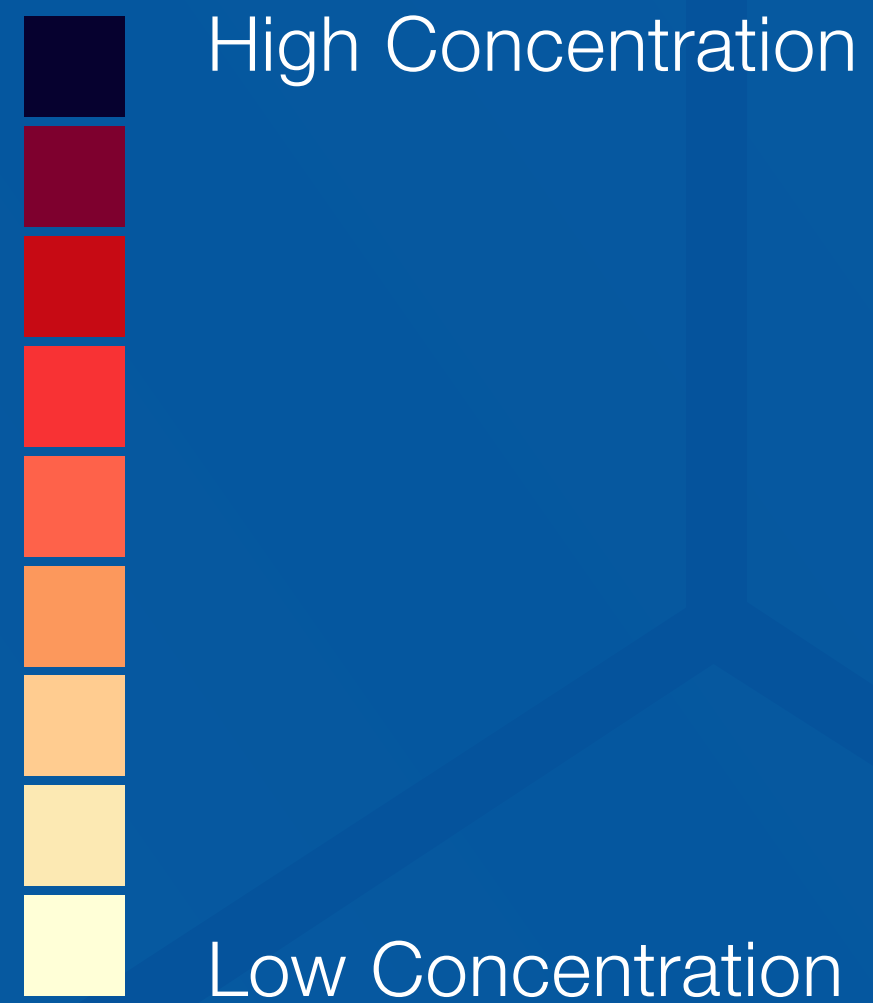
# PARK HIGHLIGHTS

- Master Planned Industrial Park
- Zoned industrial
- All city utilities serve the park
- Located 5 miles south of I-465 off of I-65 & Whiteland Road exit
- 25 Miles to Indianapolis International FedEx Hub
- 102 Miles to Louisville UPS Hub
- I-70 is 19 miles from I-65 Whiteland exit
- Right turn directly into the park from I-65 exit
- Tax abatement available





# LABOR HEAT MAP



**30,550**  
EMPLOYEES WITHIN  
30 MINUTE COMMUTE





# MOHR LOGISTICS PARK

FOR MORE INFORMATION, CONTACT:

**MARK WRITT**

Executive Vice President  
mark.writt@cbre.com  
Mobile: +1 317 696 1029  
Direct: +1 317 269 1029

**NIKKI LEAHY**

Sales Assistant  
nikki.leahy@cbre.com  
Direct: +1 317 269 1049

**CBRE**

© 2024 CBRE, Inc. All rights reserved. This information has been obtained from sources believed reliable, but has not been verified for accuracy or completeness. You should conduct a careful, independent investigation of the property and verify all information. Any reliance on this information is solely at your own risk. CBRE and the CBRE logo are service marks of CBRE, Inc. All other marks displayed on this document are the property of their respective owners, and the use of such logos does not imply any affiliation with or endorsement of CBRE. Photos herein are the property of their respective owners. Use of these images without the express written consent of the owner is prohibited. PMStudio\_October2024