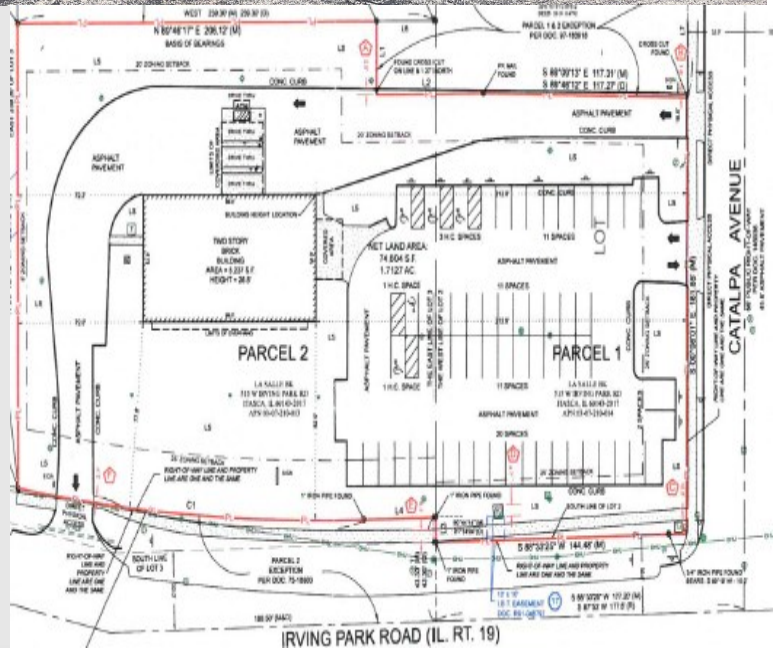




Building a better image

Building Highlights

- Total Land: 1.71 Acres +/-
- Total Building: 10,800 S.F. +/-
- Two-Story Office Building
- Three Lane Drive-Thru
- Car Parking: 57 +/-
- Zoning: B-6
- Rental Rate: Subject to Offer
- CAM: Lessee Responsibility
- Immediate Possession
- Signalized intersection on Irving Park Road
- Ideal for Financial, Medical, and Retail Services



For more information contact: Giovanni Gullo or Mariann Gullo | Phone: 847.364.7000 | Email: info@gullo.com
 Gullo International | Development Corporation | Realty Group • 1100 Landmeier Road • Elk Grove Village, IL 60007
 LinkedIn: www.linkedin.com/company/gullo-international-development-corporation
 Website: www.gullo.com

All information herein is from sources deemed reliable but not guaranteed accurate. Subject to errors, omissions, and to change of price and terms, prior sale or lease, all without notice. In compliance with Illinois law, Gullo International Realty Group (broker) hereby gives written notice of the existence of an agency relationship between broker and the owner of the above referenced property. All Gullo International Realty Group real estate agents represent the owner of the above property in negotiation of price terms, conditions, and the consummation of any lease or sale contract.