

LAND AVAILABLE

10730 Hubler Drive - Taylorsville, IN 47280



MIDLAND ATLANTIC
PROPERTIES



PROPERTY OVERVIEW

Land Adjacent to Hubler Honda Automotive Dealership, and Proposed New Hotel

PROPERTY HIGHLIGHTS

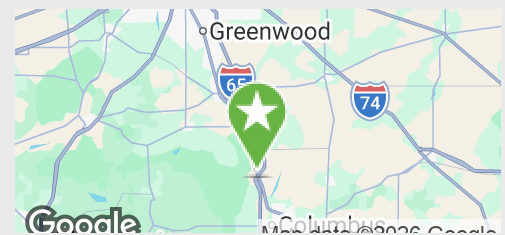
- 6 Acres
- Located at the I-65 and US Highway 31 Edinburgh Exit, Just South of the Edinburgh Outlet Mall
- Zoned CR (Commercial Regional)
- Utilities, Drainage/Retention Systems and Access Road in Place

DEMOGRAPHICS

	3 MILES	5 MILES
Total Population	6,498	17,721
Average HH Income	\$96,021	\$101,158
Businesses	590	1,660
Employees	7,171	17,558

TRAFFIC COUNTS

US Highway 31	24,726
Interstate 65	51,356



MIDLAND ATLANTIC PROPERTIES

Indianapolis Office
3801 East 82nd Street, Suite B
Indianapolis, IN 46240

MIDLANDATLANTIC.COM

PATRICK BOYLE

Direct: 317.597.1718
Cell: 317.679.6322
pjboyle@midlandatlantic.us

TRACEY HOLTZMAN

Direct: 317.597.1717
Cell: 317.410.6727
tholtzman@midlandatlantic.us

DEVELOPMENT • BROKERAGE • ACQUISITIONS • MANAGEMENT

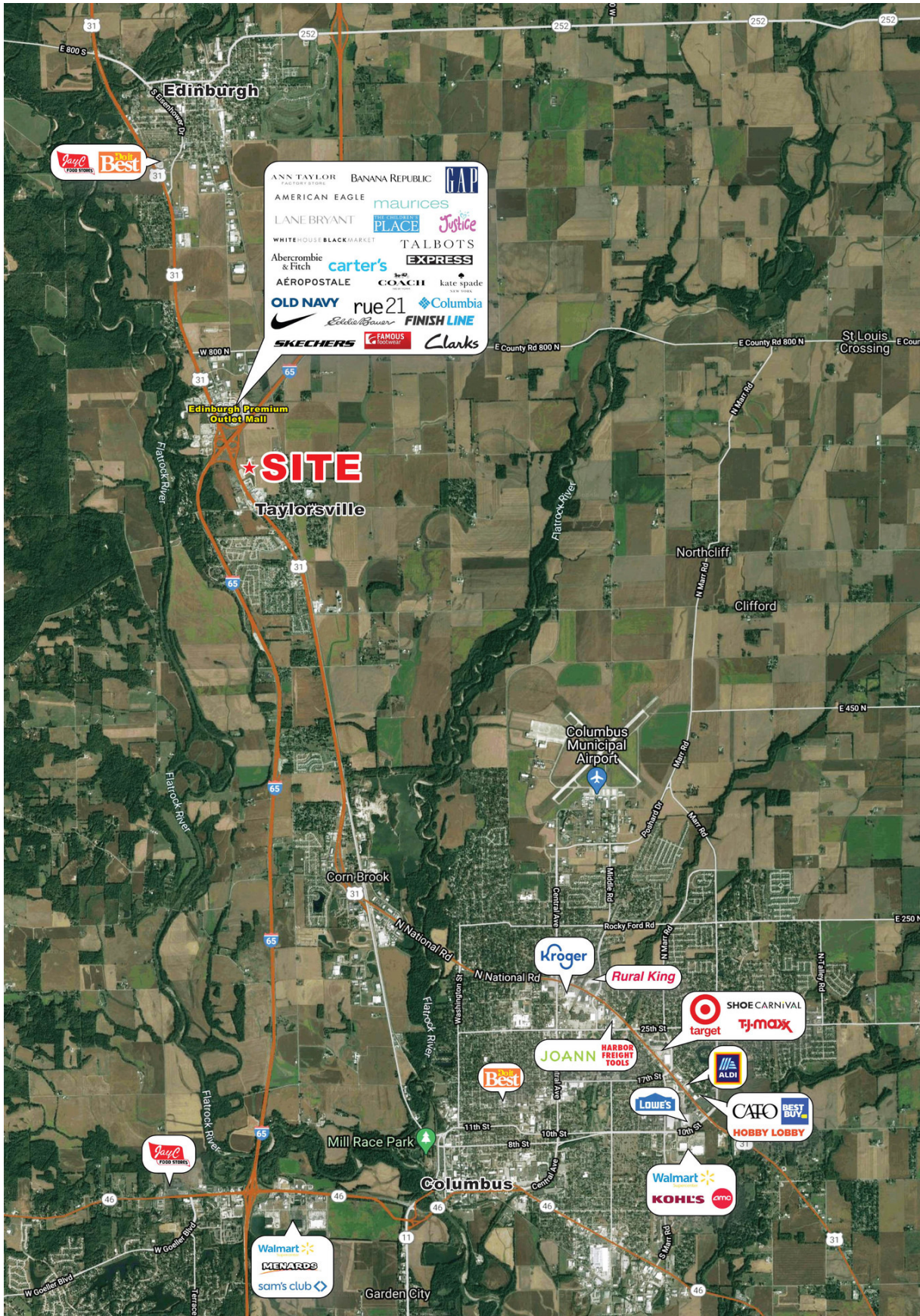
Information contained herein has been obtained from sources deemed reliable but is not guaranteed and is subject to change without notice.

LAND AVAILABLE

10730 Hubler Drive - Taylorsville, IN 47280



MIDLAND ATLANTIC
PROPERTIES

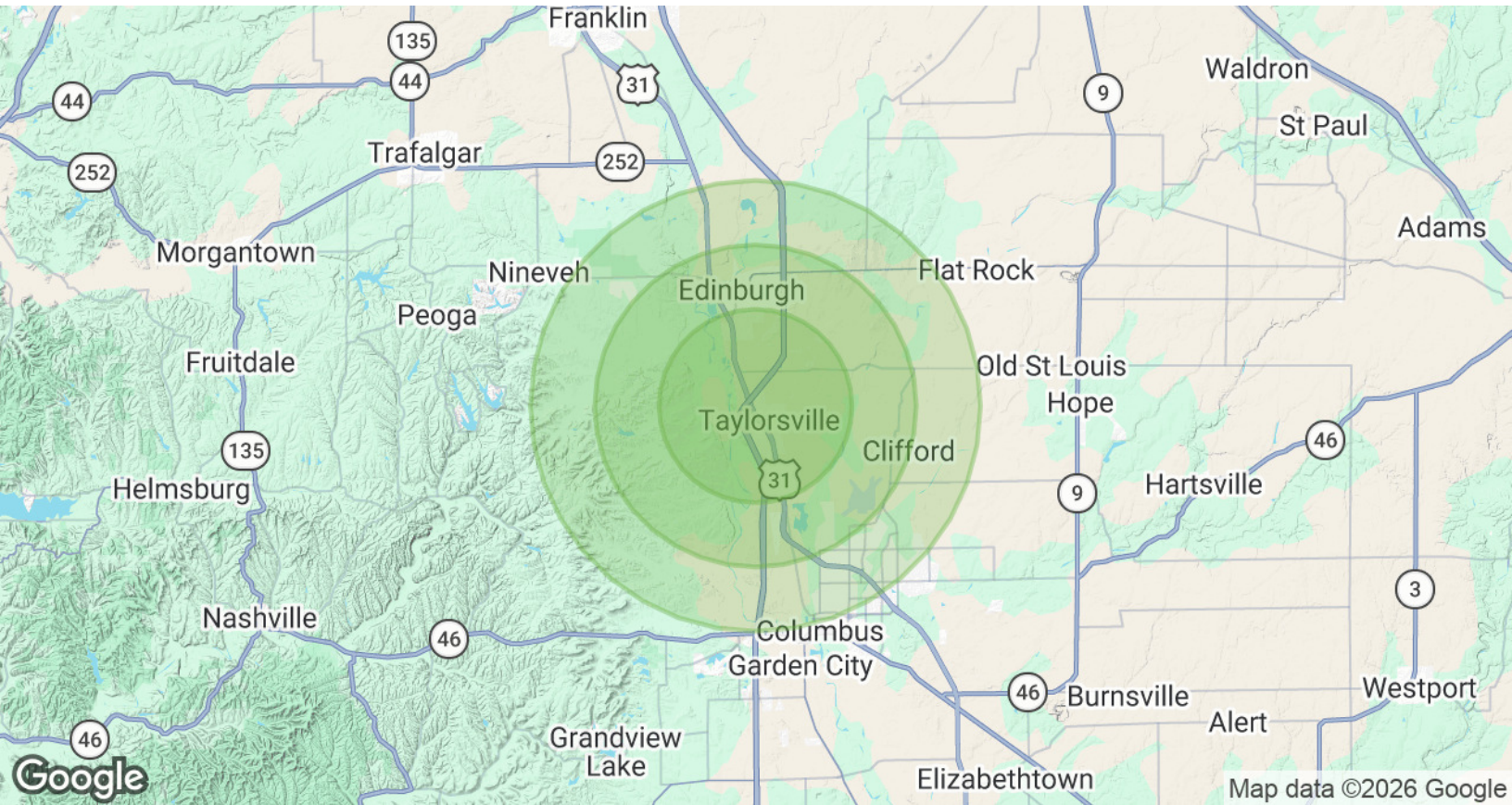


LAND AVAILABLE

10730 Hubler Drive - Taylorsville, IN 47280



MIDLAND ATLANTIC
PROPERTIES



POPULATION & HOUSING

	3 MILES	5 MILES	7 MILES
Total Population	6,423	16,823	40,716
Projected Annual Growth (2025-2030)	-0.5%	-0.3%	-0.5%
Total Households	2,482	6,809	16,508
Median Home Value	\$159,598	\$225,685	\$246,471

INCOME & BUSINESS

	3 MILES	5 MILES	7 MILES
Average HH income	\$85,297	\$96,021	\$101,158
Daytime Population (16+ years)	4,519	11,898	29,570
Total Businesses	216	590	1,660
Total Employees	2,679	7,171	17,558

MIDLAND ATLANTIC PROPERTIES

Indianapolis Office
3801 East 82nd Street, Suite B
Indianapolis, IN 46240

PATRICK BOYLE

Direct: 317.597.1718
Cell: 317.679.6322
pjboyle@midlandatlantic.us

TRACEY HOLTZMAN

Direct: 317.597.1717
Cell: 317.410.6727
tholtzman@midlandatlantic.us

MIDLANDATLANTIC.COM

DEVELOPMENT • BROKERAGE • ACQUISITIONS • MANAGEMENT

Information contained herein has been obtained from sources deemed reliable but is not guaranteed and is subject to change without notice.