



CUSHMAN &
WAKEFIELD



FOR SUBLEASE

CENTER SQUARE

3838 SOUTH 700 EAST // SALT LAKE CITY, UTAH



SUITE 210:
10,765 RSF



RATE:
\$21/RSF FSG



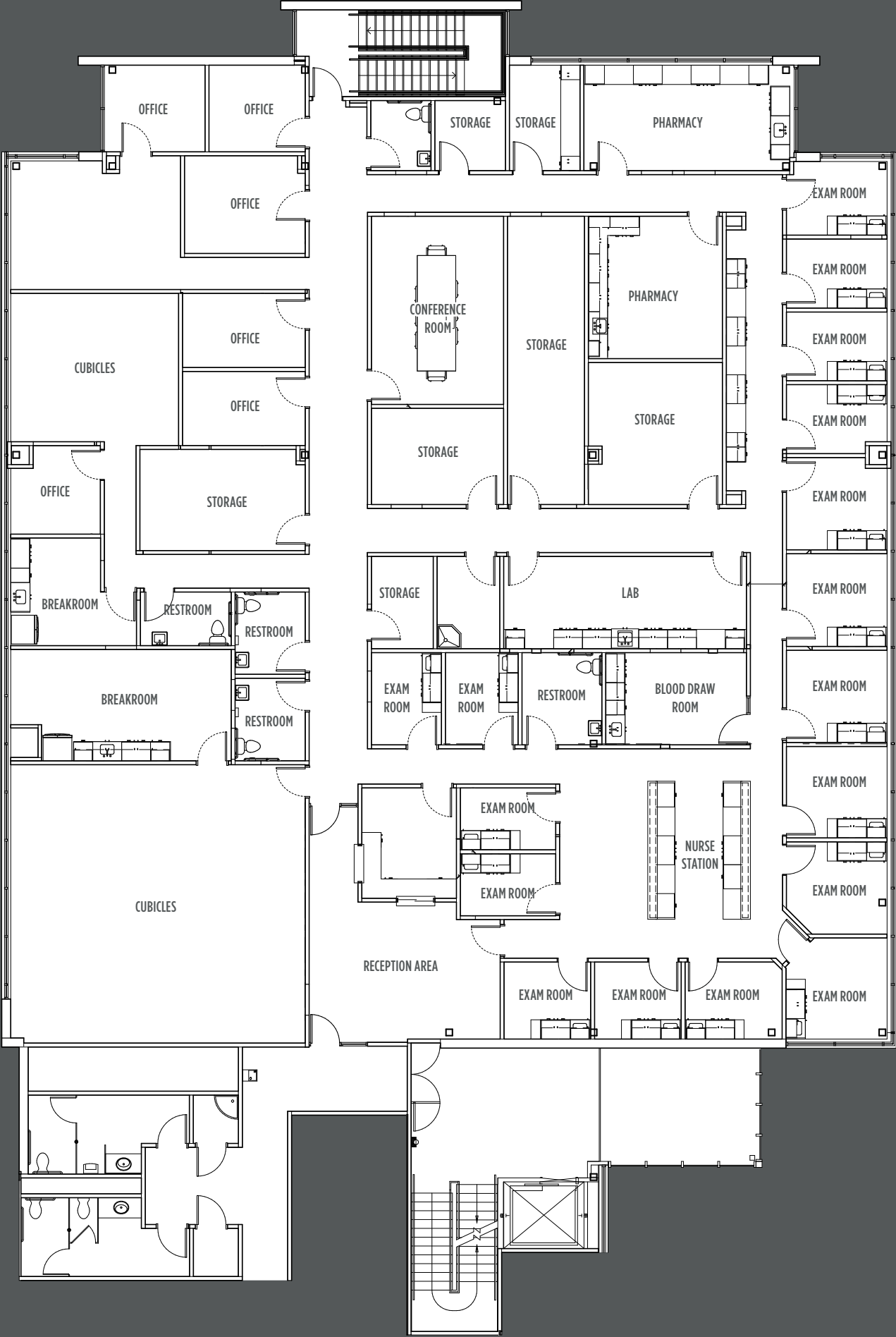
Master Lease
Expiration
3/31/2030

Property Highlights:

- Medical space
- Convenient proximity to St. Mark's Hospital and IMC
- Freeway access within a mile
- Move-in ready space
- 13 exam rooms with plumbing
- 2 lab areas
- 5 private restrooms within premises

CENTER SQUARE

SUITE 210 | 10,765 RSF



FOR SUBLEASE

CENTER SQUARE

3838 SOUTH 700 EAST, SUITE 210
SALT LAKE CITY, UTAH



**CUSHMAN &
WAKEFIELD**

170 South Main Street, Suite 1600
Salt Lake City, UT 84101
+1 801 322 2000
cushmanwakefield.com



For More Information, Contact:

Melina Miramontes

Director

+1 801 303 5435

melina.miramontes@cushwake.com

©2025 Cushman & Wakefield. All rights reserved. The information contained in this communication is strictly confidential. This information has been obtained from sources believed to be reliable but has not been verified. NO WARRANTY OR REPRESENTATION, EXPRESS OR IMPLIED, IS MADE AS TO THE CONDITION OF THE PROPERTY (OR PROPERTIES) REFERENCED HEREIN OR AS TO THE ACCURACY OR COMPLETENESS OF THE INFORMATION CONTAINED HEREIN, AND SAME IS SUBMITTED SUBJECT TO ERRORS, OMISSIONS, CHANGE OF PRICE, RENTAL OR OTHER CONDITIONS, WITHDRAWAL WITHOUT NOTICE, AND TO ANY SPECIAL LISTING CONDITIONS IMPOSED BY THE PROPERTY OWNER(S). ANY PROJECTIONS, OPINIONS OR ESTIMATES ARE SUBJECT TO UNCERTAINTY AND DO NOT SIGNIFY CURRENT OR FUTURE PROPERTY PERFORMANCE. G:\SL\Shared\Apps\Gigas\1 - Projects\Miramontes_Melina\1 - Flyers\3838South700East_CenterSquare