

## 205 RT 31 WASHINGTON TOWNSHIP - FOR SALE OR LEASE – 6800 SQFT



### CUSTOM CRAFTED - PROFESSIONAL SPACE

Purchase: \$975,000 Lease: \$9,700 Month



Thinking about more space?

Want to Own vs. Lease?

- 13 Private Offices
- Conference Room
- 3 Floors Meticulously Renovated
- Over 25 Parking Spots
- Easy Access to 78
- 3 Major Hospitals within 20 miles



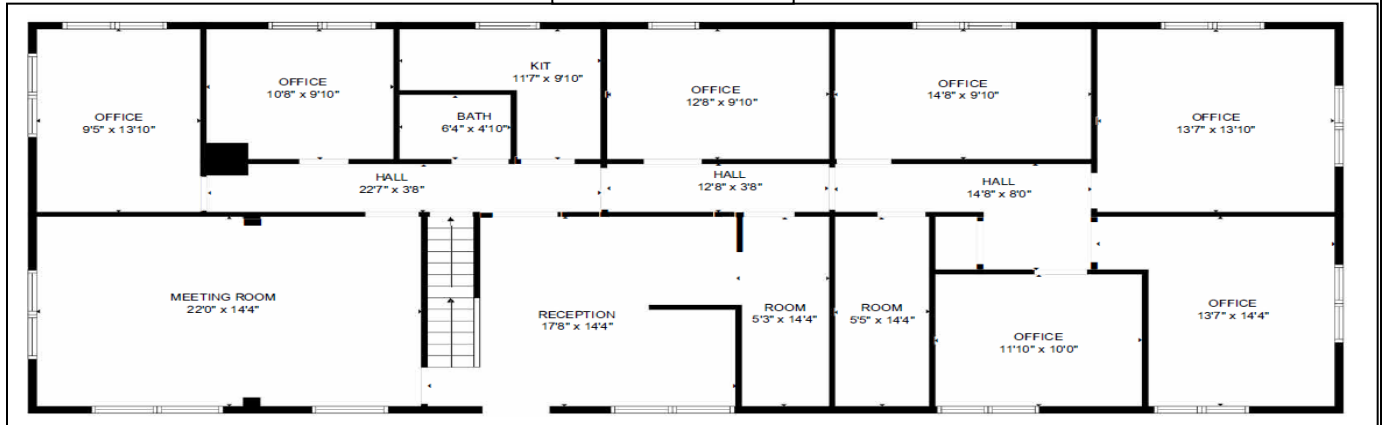
Coldwell Banker Doug Krentz 908-343-5382

Will Pfunke 908-892-2246

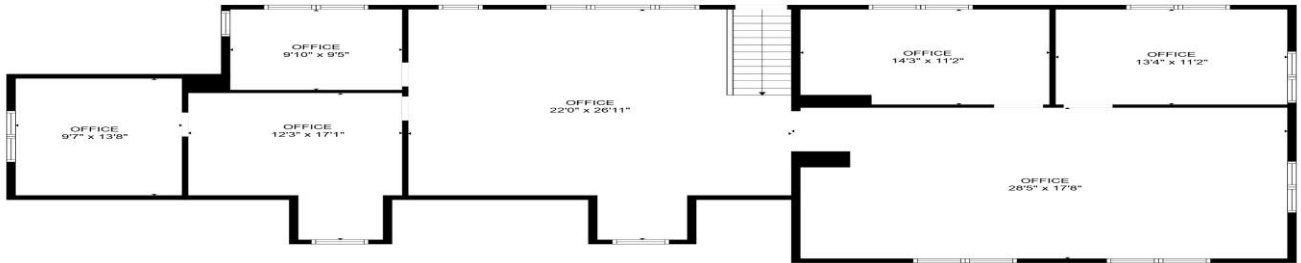
# 205 RT 31 WASHINGTON TOWNSHIP - FOR SALE OR LEASE – 6800 SQFT



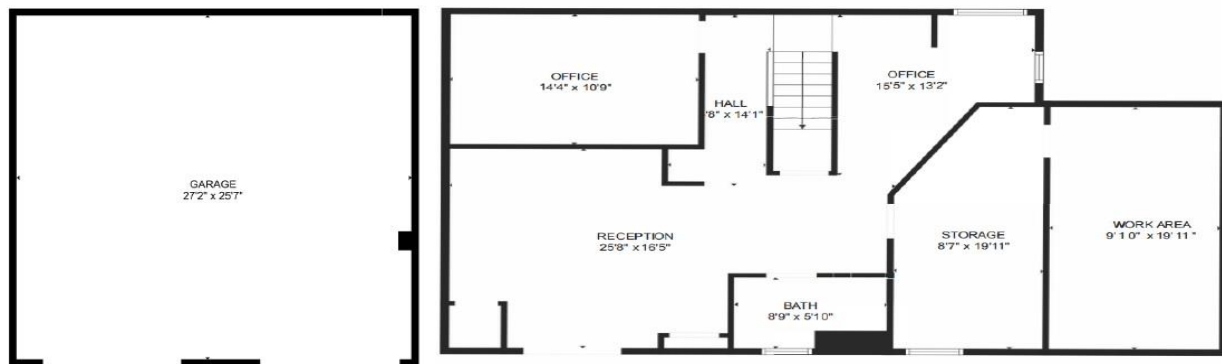
## Main Floor



## Second Floor



## Basement/Employee Entrance



Douglas Krentz  
[Coldwell Banker Commercial](#)  
 191 Main Street | Chester, NJ 07930  
 C: 908-343-5382



William Pfunke  
 Sales Associate | Coldwell Banker Realty  
 106A E Main Street, Mendham, NJ 07945  
 C: 908.892.2246  
[william.pfunke@cbrealty.com](mailto:william.pfunke@cbrealty.com)



Coldwell Banker

Doug Krentz 908-343-5382

Will Pfunke 908-892-2246