

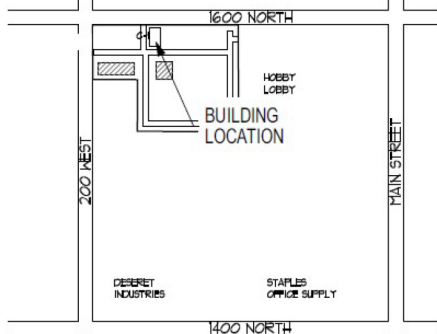
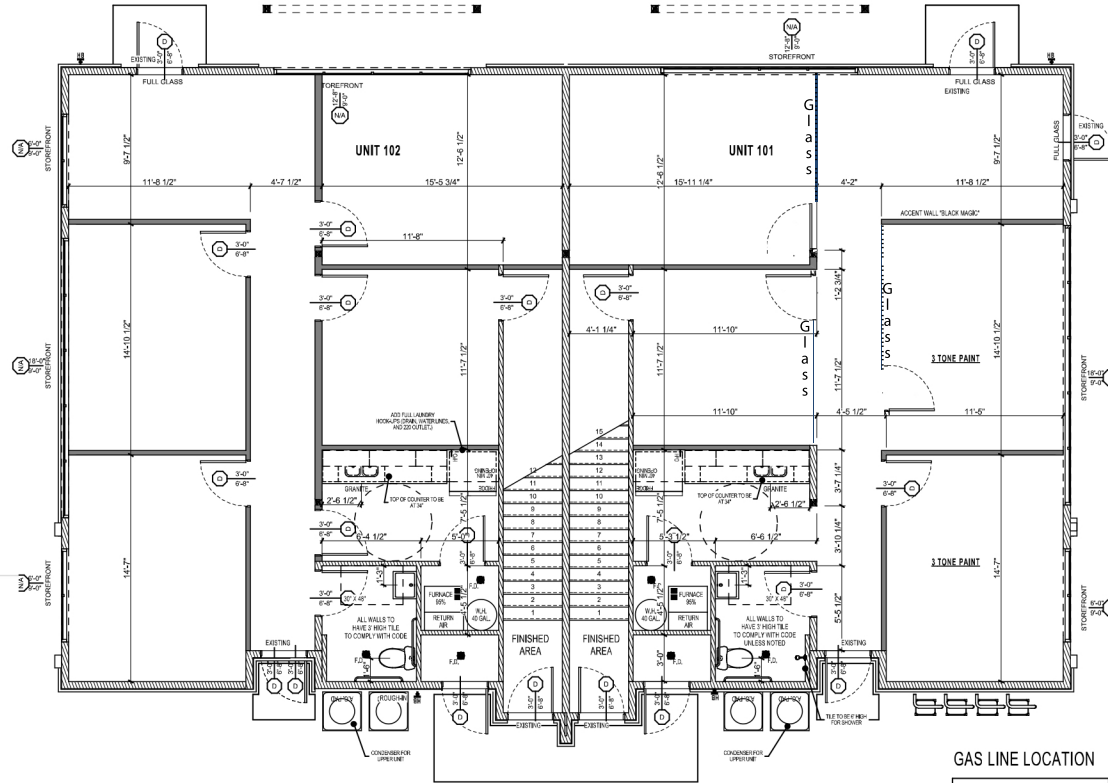
Fireblocking, Concealed Wall Spaces- Fireblocking shall be provided in concealed spaces of stud walls and partitions, including turned spaces, and parallel rows of studs or staggered studs, as follows:
 1. Vertically at the ceiling and floor levels
 2. Horizontally at intervals not exceeding 10 feet

DRAFTSTOP- A material, device or construction installed to restrict the movement of air within open spaces of concealed areas of building components such as crawl spaces, floor/ceiling assemblies, roof/ceiling assemblies and attics.

Draft stopping is required to be located in areas where a transition from horizontal to vertical or vertical to horizontal occurs. It is also required in spaces over a prescribed volume or square footage to limit how much air is available to feed a fire. The intent is to starve the fire of oxygen before it can grow to a point that it can cause severe damage to the building or structure. As draft stopping is used to limit air and not stop fire it can be built of almost any material approved by the building codes. Common draft stopping materials are- sheet metal, wood framing members, insulation or expanding foam.

Suite 120

Suite 110



VICINITY MAP

————— SOUND INSULATION

GAS LINE LOCATION	COUNT
WATER HEATER	2
FURNACE	2

TOTAL SQUARE FOOTAGE

2A - UNIT A FINISHED	1,263.88
2B - UNIT B FINISHED	1,263.88
2,527.76 sq ft	

THESE DESIGNS AND DRAWINGS ARE CONFIDENTIAL AND THE EXCLUSIVE PROPERTY OF SIERRA HOMES CONSTRUCTION INC. AND ARE NOT TO BE DISCLOSED WITHOUT EXPRESS PERMISSION OF SIERRA HOMES CONSTRUCTION INC. THEY MAY NOT BE USED OR DUPLICATED WITHOUT THE EXPRESS PERMISSION OF SIERRA HOMES CONSTRUCTION INC.
 © SIERRA HOMES CONSTRUCTION INC.

DISCLAIMER:
 ACTUAL SITE CONDITIONS MAY VARY FROM WHAT PLANS SHOW. PLANS SUBJECT TO CHANGE ON SITE.

ADDRESS:
 PARK AVE PH. D 1 & 2
 1592 NORTH 160 WEST #101
 LOGAN, UTAH

PARK AVE PH #D 1 AND 2 - VANDERBECK

SIERRA HOMES
 470 NORTH 2450 WEST
 TREMONTON UT, 84337
 CONTACT: SIERRA HOMES
 (435) 257-4963

10/29/2021

REVISION: R-7E

FLOOR PLAN

A3.1
 BRAD / AARON

SCALE: 1/8" = 1'

Hawaii
 Utah
 California

Terry Judd Architect
 801.310.7031
 terryjudd@gmail.com

1602 West 1000 North, Provo Utah, 84604