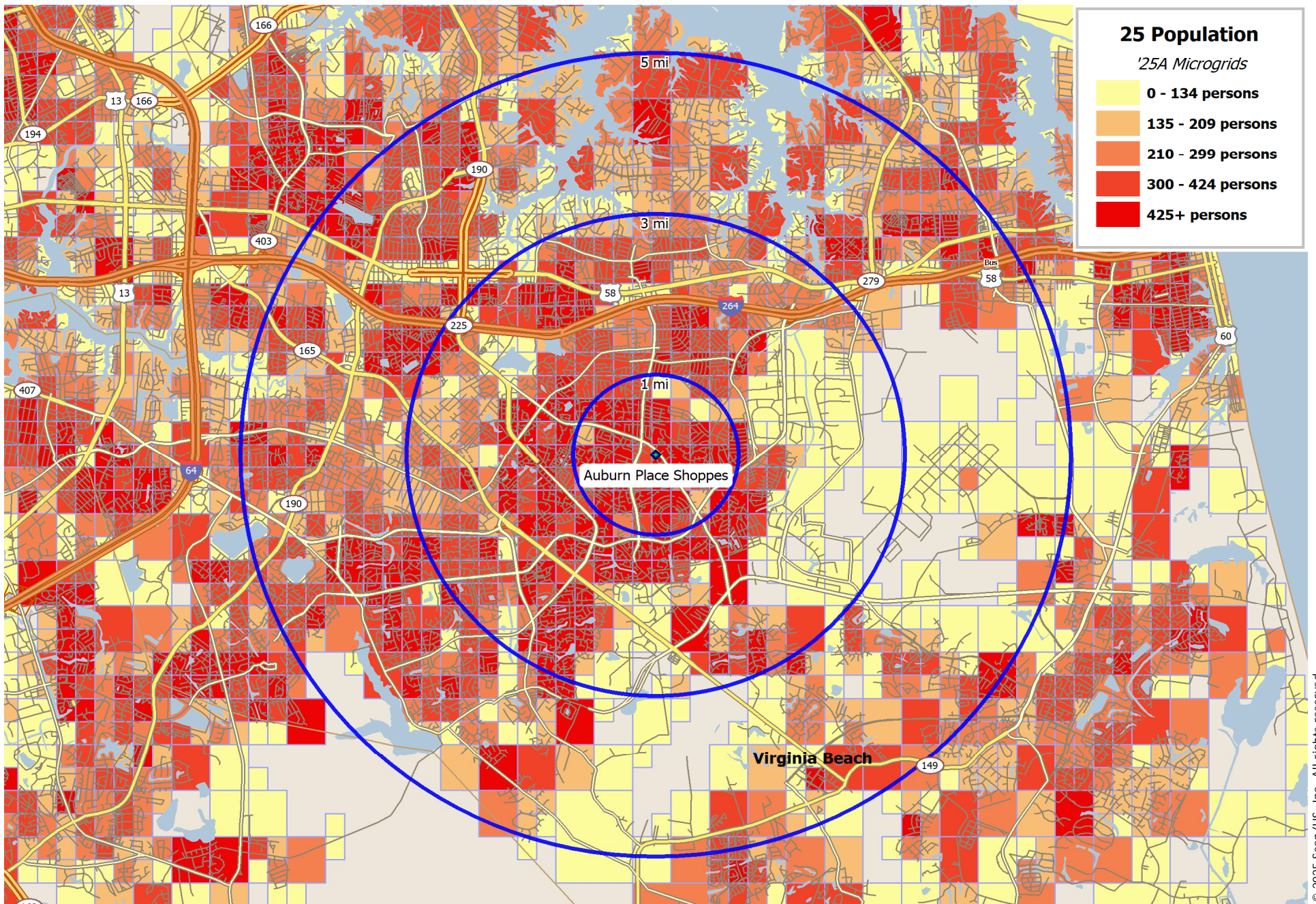
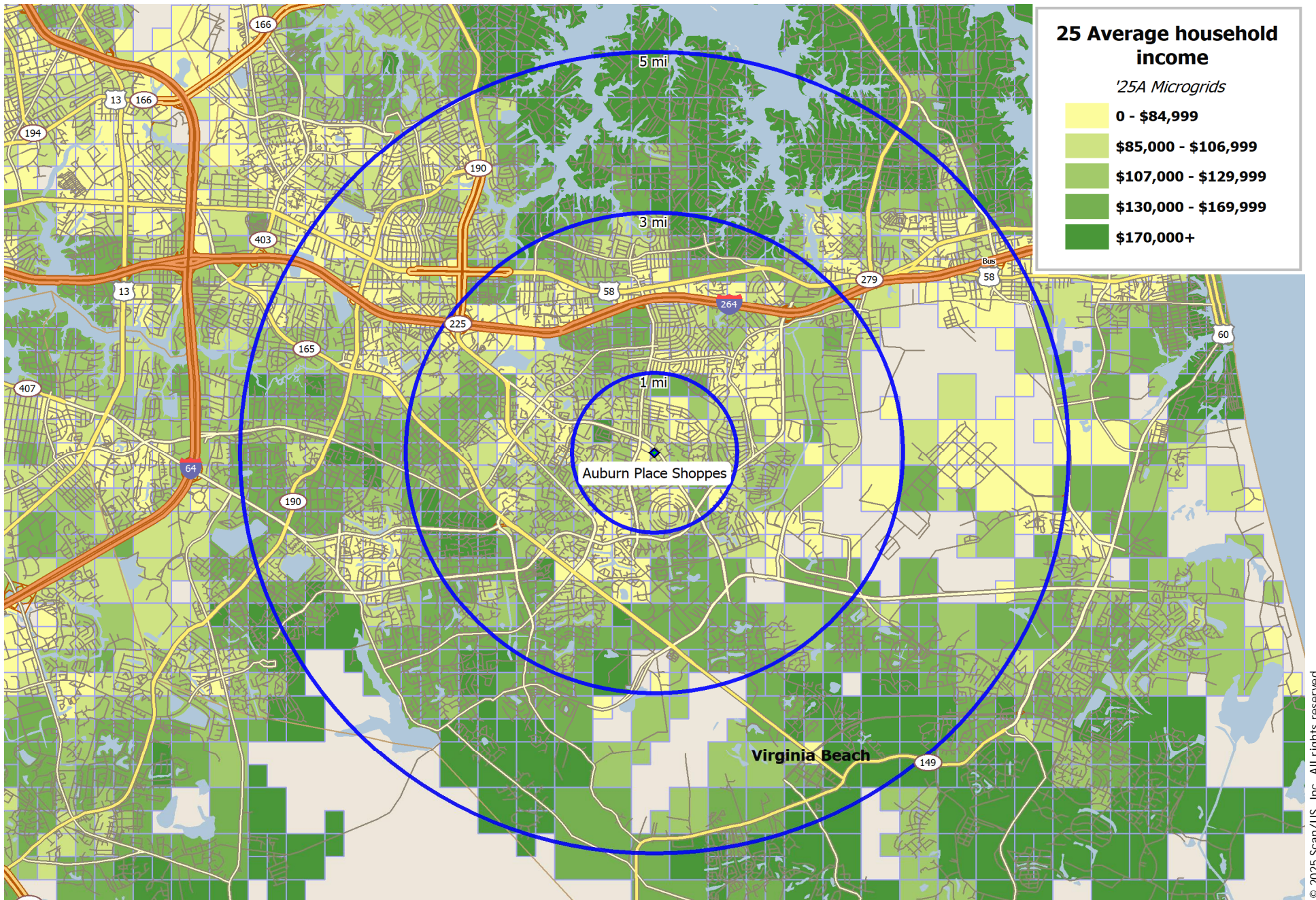


# Virginia Beach, VA: 2025 Population



© 2025 Scan/US, Inc. All rights reserved.

# Virginia Beach, VA: 2025 Average Household Income



© 2025 Scan/US, Inc. All rights reserved.

VIRGINIA BEACH, VA: 3497/3501 HOLLAND RD:  
SITE LOCATED AT 36.81061, 76.09492

Auburn Place Shoppes

	<u>1 MI RING</u>		<u>3 MI RING</u>		<u>5 MI RING</u>	
<b>Population</b>						
2030 Projection	21,205		116,978		244,546	
% Change 2025-2030		-2.4%		-1.7%		-1.7%
2025 Estimate	21,717		118,992		248,799	
% Change 2020-2025		-3.6%		-3.1%		-3.3%
2020 Census	22,538		122,829		257,243	
% Change 2010-2020		-1.4%		3.7%		4.7%
2010 Census	22,849		118,503		245,640	
<b>Households</b>						
2030 Projection	8,258		47,112		96,429	
% Change 2025-2030		-1.3%		-0.5%		-0.6%
2025 Estimate	8,364		47,350		97,019	
% Change 2020-2025		-0.7%		0.4%		0.1%
2020 Census	8,427		47,179		96,895	
% Change 2010-2020		2.1%		7.9%		7.1%
2010 Census	8,251		43,743		90,506	
<b>Age, total population</b>						
	<b>21,717</b>		<b>118,992</b>		<b>248,799</b>	
under 5 years	1,355	6.2%	7,318	6.1%	14,738	5.9%
5 to 9 years	1,391	6.4%	7,273	6.1%	15,626	6.3%
10 to 14 years	1,442	6.6%	7,323	6.2%	15,531	6.2%
15 to 19 years	1,252	5.8%	6,801	5.7%	14,877	6.0%
20 to 24 years	1,435	6.6%	7,732	6.5%	15,512	6.2%
25 to 34 years	3,905	18.0%	20,207	17.0%	39,279	15.8%
35 to 44 years	3,401	15.7%	18,096	15.2%	37,955	15.3%
45 to 54 years	2,397	11.0%	13,702	11.5%	28,973	11.6%
55 to 64 years	2,426	11.2%	13,906	11.7%	29,842	12.0%
65 to 74 years	1,728	8.0%	10,365	8.7%	22,340	9.0%
75 to 84 years	833	3.8%	4,948	4.2%	11,143	4.5%
85 years and over	151	0.7%	1,323	1.1%	2,983	1.2%
Median Age	35.70		36.80		38.21	
<b>Age, male population</b>						
	<b>10,671</b>		<b>57,927</b>		<b>122,656</b>	
under 20 years	2,768	25.9%	14,747	25.5%	31,598	25.8%
20 to 34 years	2,699	25.3%	13,969	24.1%	28,067	22.9%
35 to 44 years	1,743	16.3%	8,970	15.5%	18,902	15.4%
45 to 64 years	2,286	21.4%	12,931	22.3%	27,986	22.8%
65 to 84 years	1,128	10.6%	6,715	11.6%	14,821	12.1%
85 years and over	47	0.4%	595	1.0%	1,281	1.0%
Median Age	34.72		35.67		37.19	
<b>Age, female population</b>						
	<b>11,046</b>		<b>61,065</b>		<b>126,143</b>	
under 20 years	2,672	24.2%	13,968	22.9%	29,174	23.1%
20 to 34 years	2,641	23.9%	13,970	22.9%	26,724	21.2%
35 to 44 years	1,658	15.0%	9,126	14.9%	19,053	15.1%
45 to 64 years	2,537	23.0%	14,677	24.0%	30,829	24.4%
65 to 84 years	1,433	13.0%	8,598	14.1%	18,662	14.8%
85 years and over	104	0.9%	728	1.2%	1,702	1.3%
Median Age	36.79		37.73		39.03	

VIRGINIA BEACH, VA: 3497/3501 HOLLAND RD:  
SITE LOCATED AT 36.81061, 76.09492

Auburn Place Shoppes

	<u>1 MI RING</u>		<u>3 MI RING</u>		<u>5 MI RING</u>	
<b>Total Aggregate Income (\$mil)</b>	\$856.3		\$5,218.2		\$11,466.4	
<b>Per Capita Income</b>	\$39,428		\$43,854		\$46,087	
<b><u>Household Income (households)</u></b>	<b>8,364</b>		<b>47,350</b>		<b>97,019</b>	
under \$10,000	448	5.4%	1,861	3.9%	3,709	3.8%
\$10,000 - \$14,999	208	2.5%	1,088	2.3%	2,128	2.2%
\$15,000 - \$19,999	165	2.0%	640	1.4%	1,374	1.4%
\$20,000 - \$24,999	210	2.5%	1,234	2.6%	2,251	2.3%
\$25,000 - \$29,999	298	3.6%	1,069	2.3%	1,939	2.0%
\$30,000 - \$34,999	198	2.4%	1,549	3.3%	2,828	2.9%
\$35,000 - \$39,999	426	5.1%	1,112	2.3%	2,211	2.3%
\$40,000 - \$49,999	469	5.6%	2,830	6.0%	5,670	5.8%
\$50,000 - \$59,999	883	10.6%	4,678	9.9%	8,859	9.1%
\$60,000 - \$74,999	914	10.9%	4,669	9.9%	9,170	9.5%
\$75,000 - \$99,999	937	11.2%	6,808	14.4%	13,843	14.3%
\$100,000 - \$124,999	1,069	12.8%	6,095	12.9%	12,166	12.5%
\$125,000 - \$149,999	622	7.4%	3,857	8.1%	8,209	8.5%
\$150,000 - \$199,999	712	8.5%	4,902	10.4%	10,162	10.5%
\$200,000 - \$249,999	300	3.6%	1,860	3.9%	4,695	4.8%
\$250,000 and over	504	6.0%	3,099	6.5%	7,801	8.0%
Aggregate Household Income (\$mil)	\$855.3		\$5,209.9		\$11,422.8	
Average Household Income	\$102,264		\$110,030		\$117,737	
Median Household Income	\$77,022		\$86,707		\$93,069	
<b><u>Family Income (families)</u></b>	<b>6,164</b>		<b>32,579</b>		<b>67,662</b>	
under \$10,000	341	5.5%	1,074	3.3%	2,077	3.1%
\$10,000 - \$14,999	131	2.1%	484	1.5%	831	1.2%
\$15,000 - \$19,999	70	1.1%	302	0.9%	561	0.8%
\$20,000 - \$24,999	139	2.3%	530	1.6%	1,004	1.5%
\$25,000 - \$29,999	124	2.0%	571	1.8%	941	1.4%
\$30,000 - \$34,999	159	2.6%	743	2.3%	1,368	2.0%
\$35,000 - \$39,999	228	3.7%	568	1.7%	1,214	1.8%
\$40,000 - \$49,999	322	5.2%	1,563	4.8%	3,157	4.7%
\$50,000 - \$59,999	605	9.8%	2,664	8.2%	4,851	7.2%
\$60,000 - \$74,999	684	11.1%	3,102	9.5%	6,029	8.9%
\$75,000 - \$99,999	805	13.1%	4,892	15.0%	9,905	14.6%
\$100,000 - \$124,999	865	14.0%	4,629	14.2%	9,367	13.8%
\$125,000 - \$149,999	503	8.2%	3,010	9.2%	6,533	9.7%
\$150,000 - \$199,999	555	9.0%	4,045	12.4%	8,489	12.5%
\$200,000 - \$249,999	248	4.0%	1,682	5.2%	4,328	6.4%
\$250,000 and over	388	6.3%	2,719	8.3%	7,010	10.4%
Aggregate family income (\$mil)	\$660.7		\$4,000.4		\$9,072.3	
Average family income	\$107,180		\$122,791		\$134,082	
Median family income	\$85,597		\$100,570		\$108,182	
<b><u>Non-Family Income (non-families)</u></b>	<b>2,199</b>		<b>14,770</b>		<b>29,357</b>	
Aggregate non-family income (\$mil)	\$194.7		\$1,209.5		\$2,350.5	
Average non-family income	\$88,519		\$81,888		\$80,067	
Median non-family income	\$60,723		\$61,521		\$61,502	

VIRGINIA BEACH, VA: 3497/3501 HOLLAND RD:  
SITE LOCATED AT 36.81061, 76.09492

Auburn Place Shoppes

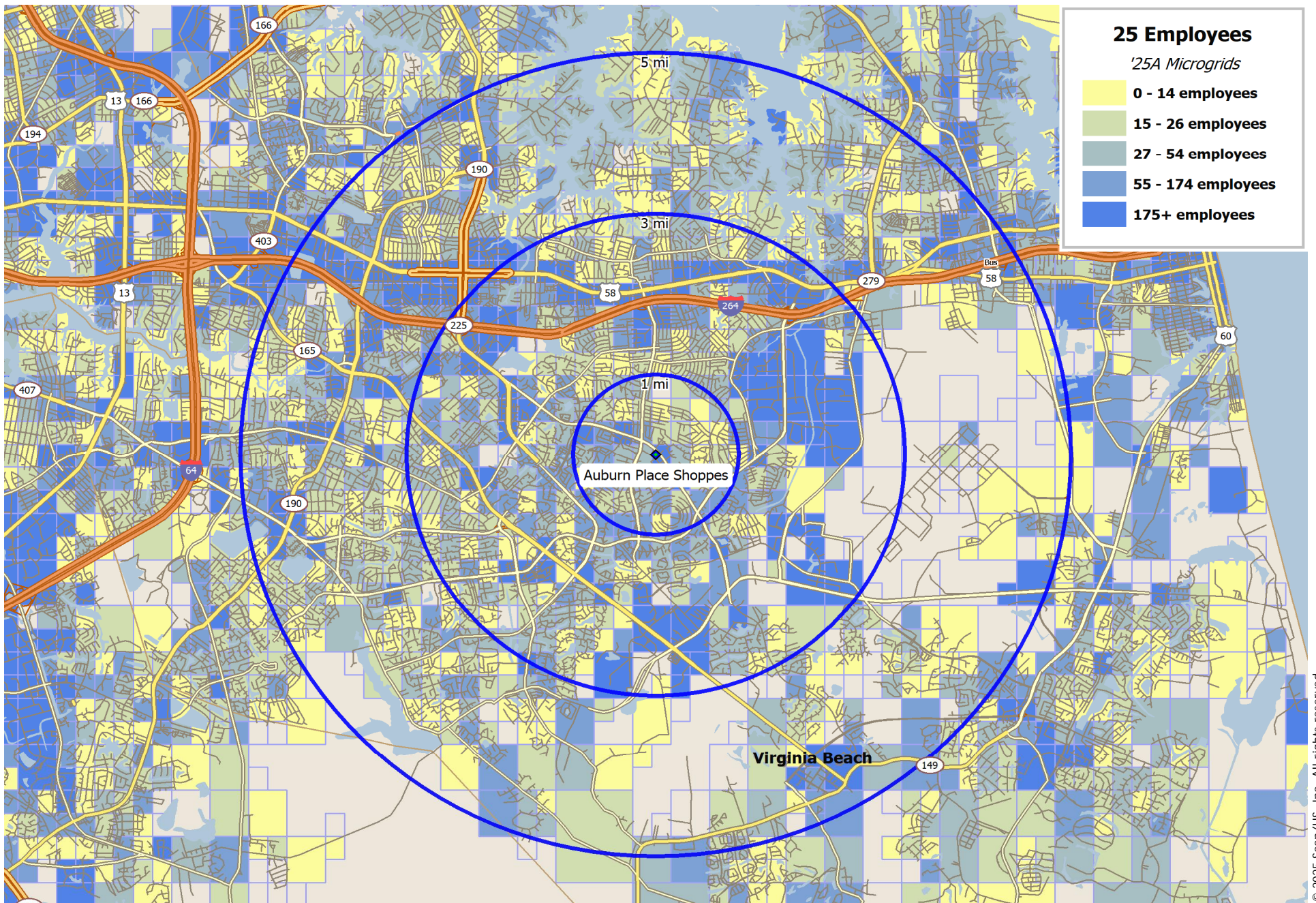
	<u>1 MI RING</u>		<u>3 MI RING</u>		<u>5 MI RING</u>	
<b><u>Population by Race/Ethnicity</u></b>	<b>21,717</b>		<b>118,992</b>		<b>248,799</b>	
White	10,041	46.2%	63,647	53.5%	143,354	57.6%
Black	6,857	31.6%	30,031	25.2%	55,585	22.3%
Asian	2,159	9.9%	11,960	10.1%	23,024	9.3%
Hawaiian/Pacific Islander	30	0.1%	130	0.1%	261	0.1%
American Indian/AK Native	83	0.4%	428	0.4%	767	0.3%
Other/multiple races	2,547	11.7%	12,797	10.8%	25,806	10.4%
<b>Hispanic Origin</b>	2,238	10.3%	11,443	9.6%	22,593	9.1%
<b><u>Education (persons 25+)</u></b>	<b>14,855</b>		<b>82,596</b>		<b>172,603</b>	
No high school diploma	915	6.2%	4,536	5.5%	10,226	5.9%
High school diploma	4,606	31.0%	21,188	25.7%	42,214	24.5%
College, no diploma	4,017	27.0%	20,090	24.3%	39,407	22.8%
Associate degree	1,500	10.1%	8,317	10.1%	17,237	10.0%
Bachelor's degree	3,021	20.3%	19,577	23.7%	42,174	24.4%
Graduate/professional degree	796	5.4%	8,888	10.8%	21,345	12.4%
<b><u>Labor Force (persons 16+ yrs)</u></b>						
<b>Total Population, Age 16+</b>	<b>18,218</b>		<b>99,747</b>		<b>206,224</b>	
Employed	12,186	66.9%	64,155	64.3%	130,805	63.4%
Unemployed	333	1.8%	1,978	2.0%	3,623	1.8%
In armed forces	1,050	5.8%	4,996	5.0%	9,384	4.6%
Not in labor force	4,649	25.5%	28,618	28.7%	62,412	30.3%
<b>Male Population, Age 16+</b>	<b>9,204</b>		<b>49,065</b>		<b>102,277</b>	
Employed	6,396	69.5%	32,415	66.1%	67,046	65.6%
Unemployed	167	1.8%	950	1.9%	1,791	1.8%
In armed forces	879	9.6%	3,872	7.9%	7,539	7.4%
Not in labor force	1,762	19.1%	11,828	24.1%	25,901	25.3%
<b>Female Population, Age 16+</b>	<b>9,014</b>		<b>50,682</b>		<b>103,947</b>	
Employed	5,790	64.2%	31,740	62.6%	63,759	61.3%
Unemployed	166	1.8%	1,028	2.0%	1,832	1.8%
In armed forces	171	1.9%	1,124	2.2%	1,845	1.8%
Not in labor force	2,887	32.0%	16,790	33.1%	36,511	35.1%
<b><u>Vehicles Available (households)</u></b>	<b>8,364</b>		<b>47,350</b>		<b>97,019</b>	
Households with no vehicles	675	8.1%	2,728	5.8%	4,918	5.1%
Households with 1 vehicle	2,512	30.0%	15,930	33.6%	30,452	31.4%
Households with 2 vehicles	3,551	42.5%	19,027	40.2%	39,154	40.4%
Households with 3+ vehicles	1,626	19.4%	9,664	20.4%	22,495	23.2%
Vehicles in owner households	10,283	66.4%	59,074	67.3%	133,317	71.0%
Vehicles in renter households	5,205	33.6%	28,740	32.7%	54,339	29.0%
<b>Total vehicles available</b>	15,488		87,814		187,656	
<b>Average vehicles per household</b>	1.85		1.85		1.93	

VIRGINIA BEACH, VA: 3497/3501 HOLLAND RD:  
SITE LOCATED AT 36.81061, 76.09492

Auburn Place Shoppes

	<u>1 MI RING</u>		<u>3 MI RING</u>		<u>5 MI RING</u>	
<b><u>Households</u></b>	8,364		47,350		97,019	
Average household size	2.59		2.50		2.53	
<b><u>Families</u></b>	6,164		32,579		67,662	
Average family size	3.02		3.04		3.06	
<b><u>Non-Families</u></b>	2,199		14,770		29,357	
Average non-family size	1.38		1.31		1.31	
<b><u>Group Quarters</u></b>	47		666		3,409	
<b><u>Household Type</u></b>						
Families	6,164		32,579		67,662	
Married couples	3,820	62.0%	22,164	68.0%	47,675	70.5%
with children	1,720	45.0%	9,983	45.0%	21,793	45.7%
Male householder, no wife	636	10.3%	2,856	8.8%	5,355	7.9%
with children	340	53.5%	1,524	53.4%	2,827	52.8%
Female householder, no husband	1,709	27.7%	7,559	23.2%	14,632	21.6%
with children	926	54.2%	3,924	51.9%	7,537	51.5%
Non-Families	2,199		14,770		29,357	
with children	10	0.5%	28	0.2%	38	0.1%
<b><u>Age of Householder (households)</u></b>						
under 25 years	336	4.0%	1,845	3.9%	3,649	3.8%
25 to 34 years	1,717	20.5%	9,156	19.3%	17,437	18.0%
35 to 44 years	1,820	21.8%	9,785	20.7%	19,904	20.5%
45 to 54 years	1,378	16.5%	7,901	16.7%	16,154	16.7%
55 to 64 years	1,400	16.7%	8,116	17.1%	17,036	17.6%
65 to 74 years	1,055	12.6%	6,398	13.5%	13,580	14.0%
75 to 84 years	541	6.5%	3,260	6.9%	7,224	7.4%
85 years and over	118	1.4%	889	1.9%	2,035	2.1%
<b><u>Household Size (households)</u></b>						
1 person	1,594	19.1%	11,284	23.8%	22,514	23.2%
2 person	3,254	38.9%	17,261	36.5%	35,022	36.1%
3 to 4 persons	2,718	32.5%	14,616	30.9%	30,493	31.4%
5+ persons	798	9.5%	4,188	8.8%	8,990	9.3%
<b><u>Total Housing Units</u></b>						
	<b>8,754</b>		<b>49,610</b>		<b>101,604</b>	
Occupied	8,364	95.5%	47,350	95.4%	97,018	95.5%
Owner-occupied	4,998	59.8%	28,181	59.5%	61,562	63.5%
Renter-occupied	3,366	40.2%	19,169	40.5%	35,456	36.5%
Vacant	390	4.5%	2,260	4.6%	4,586	4.5%
<b><u>Housing Value</u></b>						
Average Home Value	\$452,613		\$406,824		\$416,736	
Median Home Value	\$272,495		\$327,604		\$367,199	
Average Contract Rent	\$1,409		\$1,518		\$1,510	
Median Contract Rent	\$1,279		\$1,381		\$1,361	

# Virginia Beach, VA: 2025 Employees



© 2025 Scan/US, Inc. All rights reserved.

VIRGINIA BEACH, VA: 3497/3501 HOLLAND RD:  
SITE LOCATED AT 36.81061, 76.09492

Auburn Place Shoppes

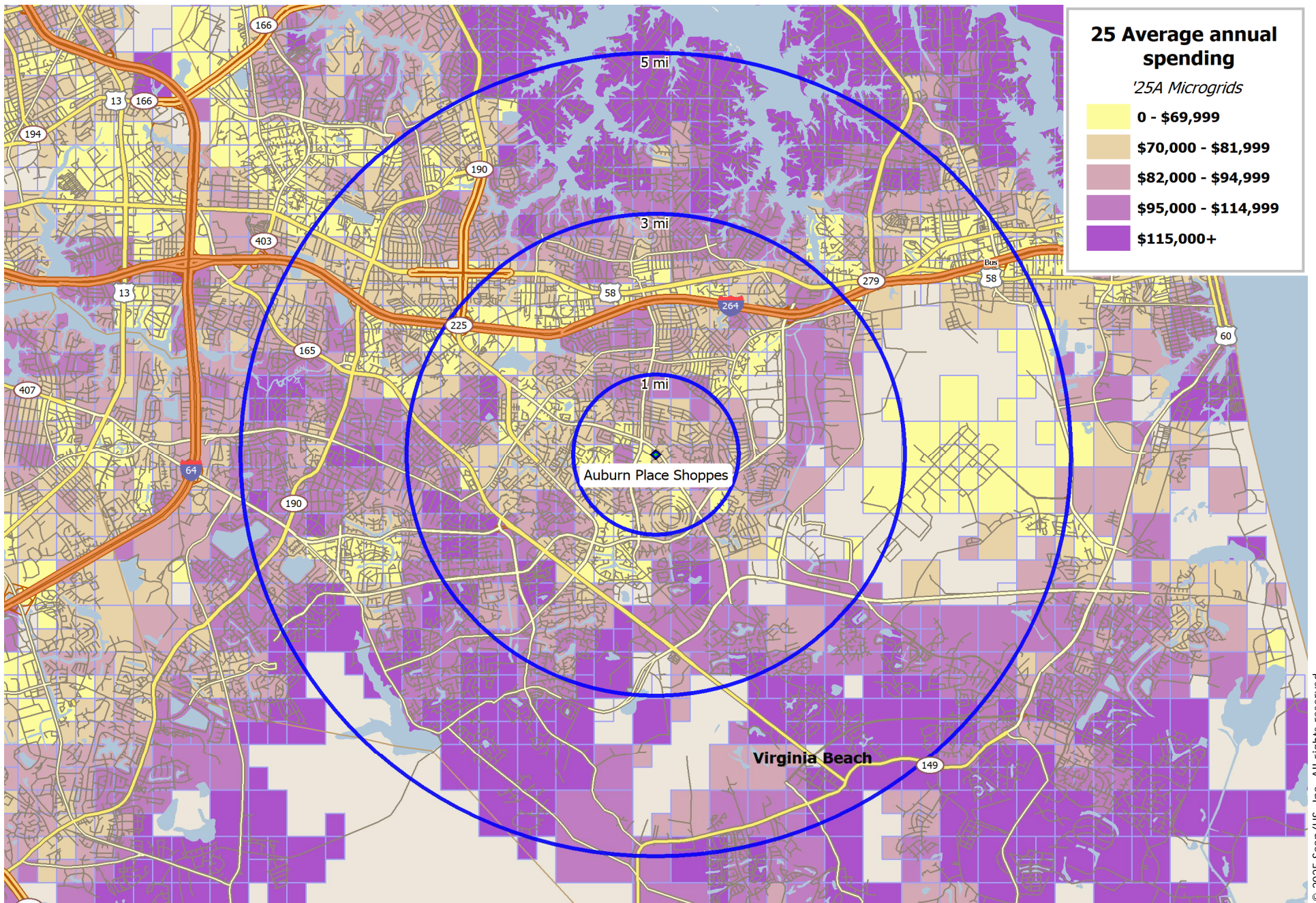
	<u>1 MI RING</u>		<u>3 MI RING</u>		<u>5 MI RING</u>	
<b>Total Establishments</b>	<b>568</b>		<b>6,983</b>		<b>13,203</b>	
<b><u>Establishments by Type</u></b>						
<b>Industrial</b>	<b>78</b>	<b>13.7%</b>	<b>956</b>	<b>13.7%</b>	<b>1,704</b>	<b>12.9%</b>
Mining	0	0.0%	1	0.1%	8	0.5%
Construction	2	2.6%	98	10.3%	153	9.0%
Construction, <10 employees	38	48.7%	453	47.4%	791	46.4%
High-tech/research	1	1.3%	12	1.3%	19	1.1%
Trans/comm/utilities	25	32.1%	192	20.1%	356	20.9%
Wholesale/industrial	6	7.7%	112	11.7%	226	13.3%
Warehousing	2	2.6%	60	6.3%	98	5.8%
General industrial	4	5.1%	28	2.9%	53	3.1%
<b>Manufacturing</b>	<b>6</b>	<b>1.1%</b>	<b>164</b>	<b>2.3%</b>	<b>286</b>	<b>2.2%</b>
Heavy manufacturing	0	0.0%	5	3.0%	8	2.8%
General manufacturing	0	0.0%	11	6.7%	14	4.9%
Light manufacturing	0	0.0%	23	14.0%	30	10.5%
Manufacturing, <10 employees	6	100.0%	125	76.2%	234	81.8%
<b>Commercial</b>	<b>233</b>	<b>41.0%</b>	<b>2,044</b>	<b>29.3%</b>	<b>3,805</b>	<b>28.8%</b>
Retail trade	58	24.9%	617	30.2%	1,179	31.0%
Restaurants/bars	46	19.7%	393	19.2%	728	19.1%
Personal/rental/repair services	58	24.9%	474	23.2%	848	22.3%
Automotive repair services	18	7.7%	98	4.8%	204	5.4%
Hotels/motels	1	0.4%	22	1.1%	44	1.2%
Theaters/retail amusements	1	0.4%	27	1.3%	40	1.1%
Equipment rental	4	1.7%	32	1.6%	62	1.6%
Wholesale/commercial	7	3.0%	74	3.6%	122	3.2%
General commercial	40	17.2%	307	15.0%	578	15.2%
<b>Offices</b>	<b>191</b>	<b>33.6%</b>	<b>3,292</b>	<b>47.1%</b>	<b>6,337</b>	<b>48.0%</b>
Business and corporate administration	3	1.6%	56	1.7%	94	1.5%
Finance/ins/real estate	4	2.1%	112	3.4%	185	2.9%
Finance/ins/real estate, <10 employees	32	16.8%	807	24.5%	1,478	23.3%
Professional services	42	22.0%	713	21.7%	1,361	21.5%
Business services	20	10.5%	272	8.3%	556	8.8%
General office	51	26.7%	664	20.2%	1,209	19.1%
Medical services	39	20.4%	668	20.3%	1,454	22.9%
<b>Other</b>	<b>55</b>	<b>9.7%</b>	<b>462</b>	<b>6.6%</b>	<b>933</b>	<b>7.1%</b>
Schools and colleges	10	18.2%	93	20.1%	176	18.9%
Libraries	0	0.0%	6	1.3%	15	1.6%
Hospitals/medical services	2	3.6%	41	8.9%	88	9.4%
Museums/art galleries/gardens	2	3.6%	10	2.2%	19	2.0%
Outdoor recreation/amusement parks	8	14.5%	61	13.2%	124	13.3%
Public administration	4	7.3%	40	8.7%	87	9.3%
Churches	24	43.6%	141	30.5%	309	33.1%
Other, not elsewhere classified	5	9.1%	70	15.2%	115	12.3%
<b>Agriculture</b>	<b>6</b>	<b>1.1%</b>	<b>65</b>	<b>0.9%</b>	<b>136</b>	<b>1.0%</b>
Agricultural production	0	0.0%	2	3.1%	4	2.9%
Agricultural services	6	100.0%	63	96.9%	132	97.1%

VIRGINIA BEACH, VA: 3497/3501 HOLLAND RD:  
SITE LOCATED AT 36.81061, 76.09492

Auburn Place Shoppes

	<u>1 MI RING</u>		<u>3 MI RING</u>		<u>5 MI RING</u>	
<b>Total Employees</b>	<b>2,675</b>		<b>60,515</b>		<b>104,561</b>	
<b>Employees by Type</b>						
<b>Industrial</b>	<b>227</b>	<b>8.5%</b>	<b>8,537</b>	<b>14.1%</b>	<b>13,537</b>	<b>12.9%</b>
Mining	0	0.0%	1	0.0%	162	1.2%
Construction	31	13.7%	3,568	41.8%	5,028	37.1%
Construction, <10 employees	101	44.5%	1,129	13.2%	2,028	15.0%
High-tech/research	2	0.9%	108	1.3%	1,036	7.7%
Trans/comm/utilities	70	30.8%	1,286	15.1%	1,822	13.5%
Wholesale/industrial	6	2.6%	1,208	14.2%	1,914	14.1%
Warehousing	6	2.6%	330	3.9%	503	3.7%
General industrial	11	4.8%	907	10.6%	1,044	7.7%
<b>Manufacturing</b>	<b>14</b>	<b>0.5%</b>	<b>5,091</b>	<b>8.4%</b>	<b>6,362</b>	<b>6.1%</b>
Heavy manufacturing	0	0.0%	353	6.9%	460	7.2%
General manufacturing	0	0.0%	2,840	55.8%	2,901	45.6%
Light manufacturing	0	0.0%	1,542	30.3%	2,303	36.2%
Manufacturing, <10 employees	14	100.0%	356	7.0%	698	11.0%
<b>Commercial</b>	<b>1,142</b>	<b>42.7%</b>	<b>17,709</b>	<b>29.3%</b>	<b>30,673</b>	<b>29.3%</b>
Retail trade	329	28.8%	6,493	36.7%	11,428	37.3%
Restaurants/bars	420	36.8%	4,822	27.2%	8,835	28.8%
Personal/rental/repair services	129	11.3%	1,599	9.0%	2,815	9.2%
Automotive repair services	49	4.3%	482	2.7%	811	2.6%
Hotels/motels	6	0.5%	585	3.3%	765	2.5%
Theaters/retail amusements	1	0.1%	141	0.8%	178	0.6%
Equipment rental	13	1.1%	89	0.5%	279	0.9%
Wholesale/commercial	19	1.7%	1,387	7.8%	1,680	5.5%
General commercial	176	15.4%	2,111	11.9%	3,882	12.7%
<b>Offices</b>	<b>682</b>	<b>25.5%</b>	<b>21,950</b>	<b>36.3%</b>	<b>40,092</b>	<b>38.3%</b>
Business and corporate administration	57	8.4%	507	2.3%	855	2.1%
Finance/ins/real estate	40	5.9%	3,409	15.5%	6,750	16.8%
Finance/ins/real estate, <10 employees	95	13.9%	2,196	10.0%	4,008	10.0%
Professional services	122	17.9%	5,919	27.0%	10,333	25.8%
Business services	52	7.6%	1,947	8.9%	2,983	7.4%
General office	166	24.3%	4,166	19.0%	7,484	18.7%
Medical services	150	22.0%	3,806	17.3%	7,679	19.2%
<b>Other</b>	<b>595</b>	<b>22.2%</b>	<b>6,937</b>	<b>11.5%</b>	<b>13,353</b>	<b>12.8%</b>
Schools and colleges	273	45.9%	1,746	25.2%	3,604	27.0%
Libraries	0	0.0%	15	0.2%	48	0.4%
Hospitals/medical services	0	0.0%	1,916	27.6%	3,126	23.4%
Museums/art galleries/gardens	4	0.7%	22	0.3%	48	0.4%
Outdoor recreation/amusement parks	29	4.9%	266	3.8%	557	4.2%
Public administration	194	32.6%	2,086	30.1%	4,152	31.1%
Churches	69	11.6%	464	6.7%	1,141	8.5%
Other, not elsewhere classified	26	4.4%	422	6.1%	677	5.1%
<b>Agriculture</b>	<b>15</b>	<b>0.6%</b>	<b>291</b>	<b>0.5%</b>	<b>544</b>	<b>0.5%</b>
Agricultural production	0	0.0%	4	1.4%	11	2.0%
Agricultural services	15	100.0%	287	98.6%	533	98.0%

# Virginia Beach, VA: 2025 Average Annual Spending



© 2025 Scan/US, Inc. All rights reserved.

VIRGINIA BEACH, VA: 3497/3501 HOLLAND RD:  
SITE LOCATED AT 36.81061, 76.09492

Auburn Place Shoppes

	<u>1 MI RING</u>	<u>3 MI RING</u>	<u>5 MI RING</u>
<b>Households</b>	<b>8,364</b>	<b>47,350</b>	<b>97,019</b>
Owner households	4,998	28,181	61,562
Renter households	3,366	19,169	35,456
Average Household income	\$102,264	\$110,030	\$117,737
Average Annual Household Spending	\$80,582	\$83,523	\$87,279

Average Annual Spending by Category

<b>Food</b>	<b>\$10,805</b>	<b>13.4%</b>	<b>\$10,748</b>	<b>12.9%</b>	<b>\$11,068</b>	<b>12.7%</b>
Food at home	\$6,516	60.3%	\$6,415	59.7%	\$6,560	59.3%
Cereals/bakery products	\$878	13.5%	\$869	13.5%	\$891	13.6%
Meats/poultry/fish/eggs	\$1,305	20.0%	\$1,275	19.9%	\$1,298	19.8%
Dairy products	\$625	9.6%	\$617	9.6%	\$632	9.6%
Fruits/vegetables	\$1,033	15.9%	\$1,017	15.9%	\$1,043	15.9%
Other food at home	\$2,666	40.9%	\$2,628	41.0%	\$2,689	41.0%
Food away from home	\$4,288	39.7%	\$4,332	40.3%	\$4,508	40.7%
<b>Alcoholic beverages</b>	<b>\$611</b>	<b>0.8%</b>	<b>\$632</b>	<b>0.8%</b>	<b>\$665</b>	<b>0.8%</b>
<b>Tobacco products</b>	<b>\$451</b>	<b>0.6%</b>	<b>\$420</b>	<b>0.5%</b>	<b>\$414</b>	<b>0.5%</b>
<b>Housing</b>	<b>\$27,022</b>	<b>33.5%</b>	<b>\$28,051</b>	<b>33.6%</b>	<b>\$28,869</b>	<b>33.1%</b>
Shelter	\$15,967	59.1%	\$16,515	58.9%	\$17,001	58.9%
Owned dwellings	\$7,801	48.9%	\$8,311	50.3%	\$9,172	54.0%
Mortgage interest/charges	\$3,449	44.2%	\$3,609	43.4%	\$3,940	43.0%
Property taxes	\$1,937	24.8%	\$2,075	25.0%	\$2,307	25.1%
Maintenance/repairs/insurance	\$2,415	31.0%	\$2,626	31.6%	\$2,926	31.9%
Rented dwellings	\$6,852	42.9%	\$6,721	40.7%	\$6,126	36.0%
Other lodging	\$1,312	8.2%	\$1,482	9.0%	\$1,701	10.0%
Household furnishings & equipment	\$2,645	9.8%	\$2,801	10.0%	\$2,909	10.1%
Household textiles	\$97	3.7%	\$102	3.6%	\$101	3.5%
Furniture	\$694	26.2%	\$730	26.1%	\$762	26.2%
Floor coverings	\$19	0.7%	\$20	0.7%	\$22	0.8%
Major appliances	\$455	17.2%	\$479	17.1%	\$495	17.0%
Small appliances/housewares	\$146	5.5%	\$152	5.4%	\$156	5.3%
Miscellaneous household equipment	\$1,234	46.7%	\$1,318	47.1%	\$1,374	47.2%
Utilities/fuels/public services	\$5,212	19.3%	\$5,380	19.2%	\$5,472	19.0%
Household operations	\$2,287	8.5%	\$2,403	8.6%	\$2,508	8.7%
Housekeeping supplies	\$904	3.3%	\$944	3.4%	\$971	3.4%
<b>Apparel</b>	<b>\$2,002</b>	<b>2.5%</b>	<b>\$2,002</b>	<b>2.4%</b>	<b>\$2,081</b>	<b>2.4%</b>
Men & boys	\$502	25.1%	\$496	24.8%	\$508	24.4%
Men, 16 yrs and over	\$469	93.5%	\$462	93.2%	\$475	93.5%
Boys, 2 to 15 yrs	\$33	6.5%	\$34	6.8%	\$33	6.5%
Women & girls	\$799	39.9%	\$805	40.2%	\$849	40.8%
Women, 16 yrs and over	\$709	88.7%	\$716	88.9%	\$759	89.4%
Girls, 2 to 15 yrs	\$90	11.3%	\$89	11.1%	\$90	10.6%

VIRGINIA BEACH, VA: 3497/3501 HOLLAND RD:  
SITE LOCATED AT 36.81061, 76.09492

Auburn Place Shoppes

	<u>1 MI RING</u>		<u>3 MI RING</u>		<u>5 MI RING</u>	
<b>Average Annual Spending by Category</b>						
<b>Apparel (cont'd)</b>						
Children under 2 yrs	\$49	2.5%	\$49	2.5%	\$49	2.4%
Footwear	\$425	21.2%	\$426	21.3%	\$439	21.1%
Other apparel	\$224	11.2%	\$223	11.2%	\$233	11.2%
<b>Transportation</b>	<b>\$13,997</b>	<b>17.4%</b>	<b>\$14,806</b>	<b>17.7%</b>	<b>\$15,627</b>	<b>17.9%</b>
Vehicle purchases	\$6,681	47.7%	\$6,944	46.9%	\$7,379	47.2%
Cars and trucks, new	\$3,145	47.1%	\$3,581	51.6%	\$3,995	54.1%
Cars and trucks, used	\$3,536	52.9%	\$3,363	48.4%	\$3,384	45.9%
Gasoline & other fuels	\$3,033	21.7%	\$2,997	20.2%	\$3,086	19.7%
Other vehicle expenses	\$3,879	27.7%	\$3,921	26.5%	\$4,087	26.2%
Finance charges	\$464	12.0%	\$468	11.9%	\$482	11.8%
Maintenance and repairs	\$1,026	26.4%	\$1,047	26.7%	\$1,098	26.9%
Insurance	\$1,501	38.7%	\$1,493	38.1%	\$1,539	37.7%
Rental/leasing/other	\$888	22.9%	\$914	23.3%	\$968	23.7%
Public & other transportation	\$400	2.9%	\$940	6.4%	\$1,072	6.9%
<b>Health care</b>	<b>\$6,758</b>	<b>8.4%</b>	<b>\$6,930</b>	<b>8.3%</b>	<b>\$7,252</b>	<b>8.3%</b>
Health Insurance	\$4,804	71.1%	\$4,892	70.6%	\$5,096	70.3%
Medical services	\$1,133	16.8%	\$1,183	17.1%	\$1,254	17.3%
Drugs	\$572	8.5%	\$597	8.6%	\$631	8.7%
Medical supplies	\$250	3.7%	\$258	3.7%	\$271	3.7%
<b>Entertainment</b>	<b>\$3,520</b>	<b>4.4%</b>	<b>\$3,727</b>	<b>4.5%</b>	<b>\$3,913</b>	<b>4.5%</b>
Fees and admissions	\$866	24.6%	\$932	25.0%	\$1,005	25.7%
Audio/visual equipment/services	\$1,058	30.0%	\$1,103	29.6%	\$1,133	29.0%
Pets/toys/playground equipment	\$952	27.1%	\$1,025	27.5%	\$1,068	27.3%
Other entertainment supplies	\$645	18.3%	\$667	17.9%	\$707	18.1%
<b>Personal care products and services</b>	<b>\$976</b>	<b>1.2%</b>	<b>\$986</b>	<b>1.2%</b>	<b>\$1,025</b>	<b>1.2%</b>
<b>Reading</b>	<b>\$105</b>	<b>0.1%</b>	<b>\$109</b>	<b>0.1%</b>	<b>\$117</b>	<b>0.1%</b>
<b>Education</b>	<b>\$1,364</b>	<b>1.7%</b>	<b>\$1,430</b>	<b>1.7%</b>	<b>\$1,578</b>	<b>1.8%</b>
<b>Personal insurance &amp; pensions</b>	<b>\$9,407</b>	<b>11.7%</b>	<b>\$9,873</b>	<b>11.8%</b>	<b>\$10,570</b>	<b>12.1%</b>
Pensions/social security	\$8,857	94.2%	\$9,287	94.1%	\$9,937	94.0%
Life/other personal insurance	\$549	5.8%	\$585	5.9%	\$634	6.0%
<b>Cash contributions</b>	<b>\$2,305</b>	<b>2.9%</b>	<b>\$2,490</b>	<b>3.0%</b>	<b>\$2,736</b>	<b>3.1%</b>
<b>Miscellaneous</b>	<b>\$1,250</b>	<b>1.6%</b>	<b>\$1,308</b>	<b>1.6%</b>	<b>\$1,354</b>	<b>1.6%</b>