

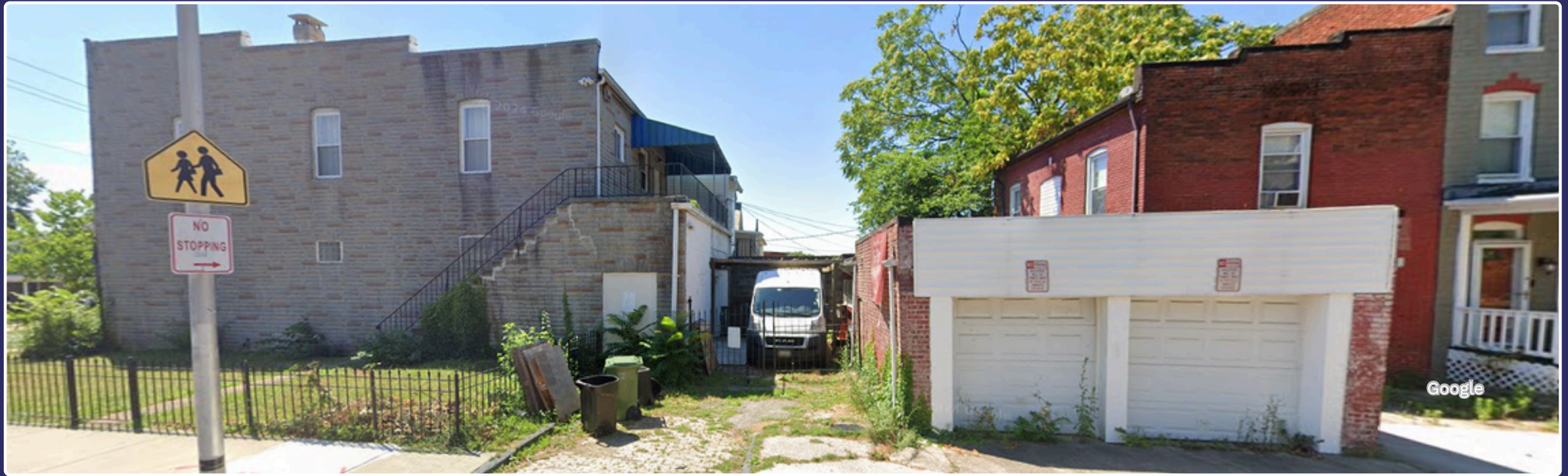
3646 Roland Avenue

Flyer | Multifamily/Development Sale

3646 Roland Ave | Baltimore | MD 21211



Executive Summary



Highlights

- **Building 1:** Residential Over Retail
- **Building 2:** Garage
- **Building 3:** Carriage House
(Residential Over Garage)
- Zoning: R-6
- Year-Built: 1920
- Ideal Buyer: Investor or Developer
- Price: \$600,000
- Sale Type: Multifamily & Development
- Building Size: 2,200 SF TBC
- Lot Size: 5,000 SF
- 3 Curb Cuts

Retail Map





TROUT DANIEL & ASSOCIATES

BUY. SELL. LEASE. ADVISE.

Coleman Tirone

Associate

 O: 443.921.9328

 ctirone@troutdaniel.com

Contact Us



**30 E. Padonia Road, Suite
504** Timonium, MD 21093



Visit Us

troutdaniel.com



Call Us

410.435 .4004

The information contained in this marketing brochure has been obtained from sources we believe to be reliable; however, Trout Daniel & Associates LLC has not verified, and will not verify any of the information contained herein, nor has Trout Daniel & Associates LLC conducted any investigation regarding these matters and makes no warranty or representation whatsoever regarding the accuracy or completeness of the information provided. An agent indicated by an asterisk (*) has a direct or indirect ownership interest in this property.