

NORMAL PROPERTIES

147 N Mission Rd
Boyle Heights Industrial Flats

Industrial Warehouse Suite
±10,288 RSF

For Lease



NORMAL PROPERTIES

147 N Mission Rd
Boyle Heights Industrial Flats

Industrial Warehouse Suite
±10,288 RSF

For Lease

2

Located in the industrial flats section of Boyle Heights, 147 N Mission Rd is an industrial warehouse suite just across the river from the Arts District and in very close proximity to major freeways and thoroughfares.

Available Space	147 N Mission Rd
Size	±10,288 RSF
Rent	Negotiable
Term	3 to 5 Years
Occupancy	Immediate

Features of 147 N Mission Rd Include

- Easy access to five major freeways
- On-site and street parking
- Close to Pico/Aliso L Line Station

Other Details

Parking: Up to 12 on-site spaces, plus ample street parking

Docks: 1 exterior well dock

Kitchen: Fully Built with Appliances

Ceiling Heights: Approx. 14'

HVAC: Fully Distributed Throughout

Fire Safety: Full sprinkler system

Power: Heavy (user to verify)

Construction: Concrete Block

NORMAL PROPERTIES

147 N Mission Rd
Boyle Heights Industrial Flats

Industrial Warehouse Suite
±10,288 RSF

For Lease

8



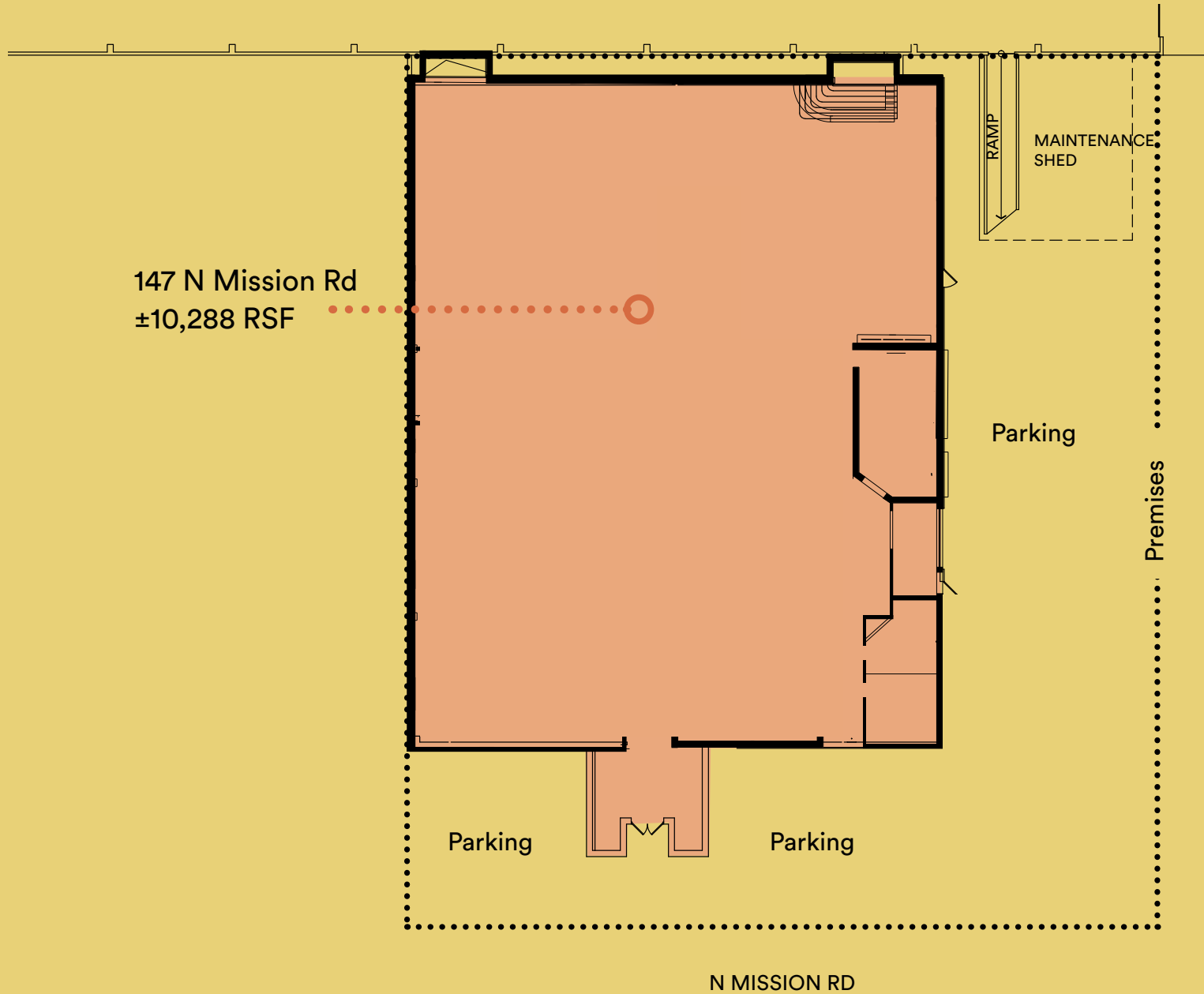
NORMAL PROPERTIES

147 N Mission Rd
Boyle Heights Industrial Flats

Industrial Warehouse Suite
±10,288 RSF

For Lease

8



147 N Mission Rd
±10,288 RSF

RAMP

MAINTENANCE SHED

Parking

Parking

Parking

Premises

N MISSION RD

NORMAL PROPERTIES

147 N Mission Rd
Boyle Heights Industrial Flats

Industrial Warehouse Suite
±10,288 RSF

For Lease

9



You Are Here
at 147 N Mission Rd



To request more information
or to schedule a viewing,
please contact us, Thank you.

Geoffrey Anenberg
NORMAL PROPERTIES
323 243 2821
DRE# 01831214