



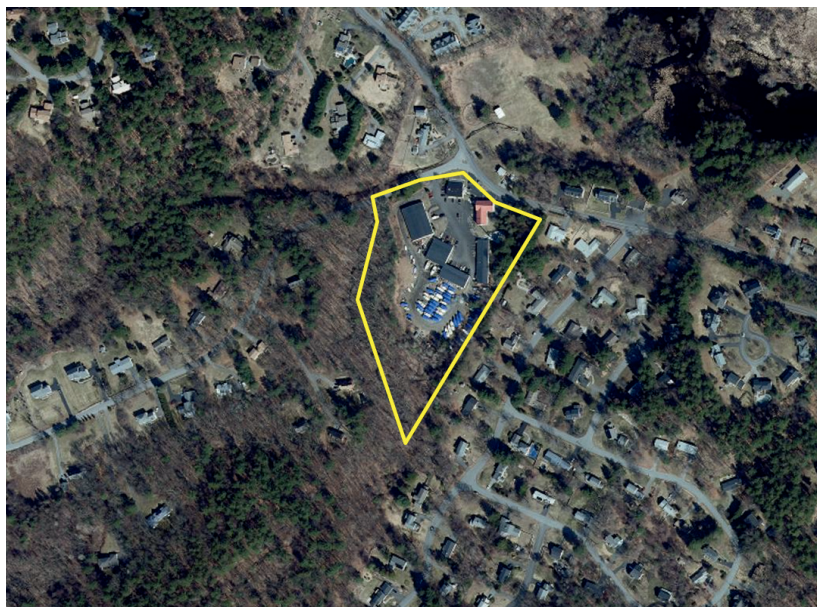
AVAILABLE FOR LEASE

235 SUMMER ROAD BOXBOROUGH, MA BOXBOROUGH BUSINESS PARK OFFICE SPACE/LIGHT MANUFACTURING

A single office is available Boxborough Business Park which is a 40,000 SF business park made up of five (5) buildings.

The buildings offer private offices, ample parking, heavy power and signage on Summer Road.

Conveniently located two (2) miles from Exit 28 on I-495 and 45 minutes from downtown Boston.



ERIC O'BRIEN
PRESIDENT

ERIC@OBRIENCOMMERCIAL.COM
978.369.5501

COMMERCIAL
O'BRIEN
PROPERTIES, INC.

235 SUMMER ROAD BOXBOROUGH, MA

BUILDING 1
4,000 SF

- Year Built: 1960
- Building 1: 4,000 SF
- Land: 7.9 Acres
- Type: Office
- Zoning: IND/COMM
- Construction: Wood frame
- Roof: Rubber/Asphalt
- Stories: Two (2)
- Power: 200 Amp/3-Phase
- Heating: Natural Gas
- Water: City
- Sewer: Private
- Ceiling Hgt: 9'
- Parking: Ample



BOXBOROUGH BUSINESS PARK . OFFICE SPACE/LIGHT MANUFACTURING



ERIC O'BRIEN
PRESIDENT

ERIC@OBRIENCOMMERCIAL.COM
978.369.5501

