

WAREHOUSE ROW

1110 Market Street | Chattanooga, Tennessee

277,184 Square Foot Class A Office and Retail building located in the heart of Downtown



FOR LEASE

520 Lookout Street | Chattanooga TN 37403

NAI Charter

WAREHOUSE ROW

Located in between the CBD and the South Side in Downtown Chattanooga, Warehouse Row is one of the most recognizable buildings in the Market. The property was redeveloped by Jamestown in the mid-2000s and has been a vibrant part of Chattanooga ever since.

The first floor consists of notable and high-end retailers such as Anthropologie, Lulu Lemon, Onward Reserve and Revival. Goodman's Coffee, Tupelo Honey, Public House, The Social and Two Ten Jacks offer dining experiences and libations.

The second through fifth floor consist of a variety of Office Users that utilize the ample and well maintained common areas throughout the office floors. Some of the key Office Tenants include, Coyote Logistics, LJA Engineering, Ernst & Young, and The United States Attorney's Office. With options for high-end tech office space or more traditional office space, Warehouse Row is the perfect place for you to expand your business.

AMENITIES

- Onsite Parking
- 2/1,000 Parking Ratio
- Property Size: 277,184± SF
- Onsite Property Management
- 24/7 Manned Security
- Multiple Common Areas
- Additional Storage Available

LEASE RATE

\$25.00 PSF Full Service

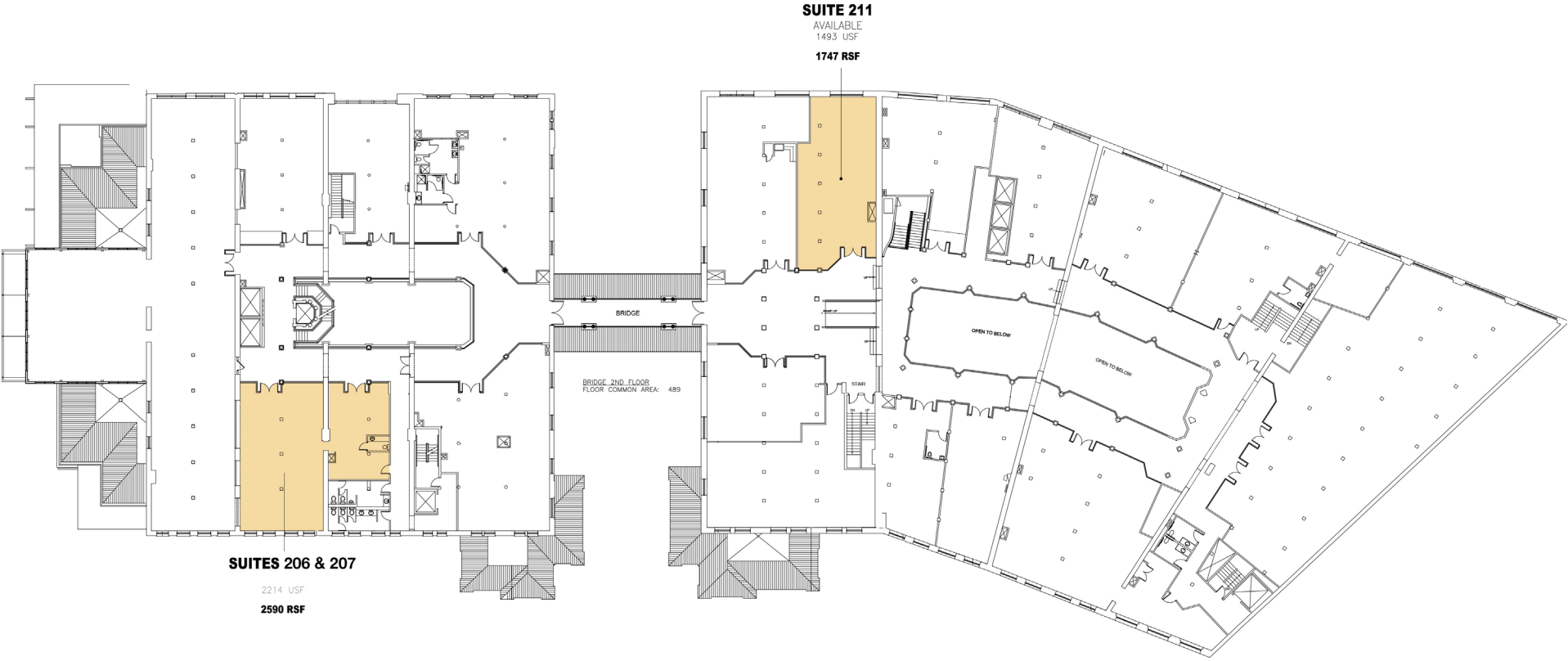
Contiguous suites can be combined to accomodate larger users.



WAREHOUSE ROW

1110 Market Street | Chattanooga, Tennessee

Second Floor Plan - Available Suites

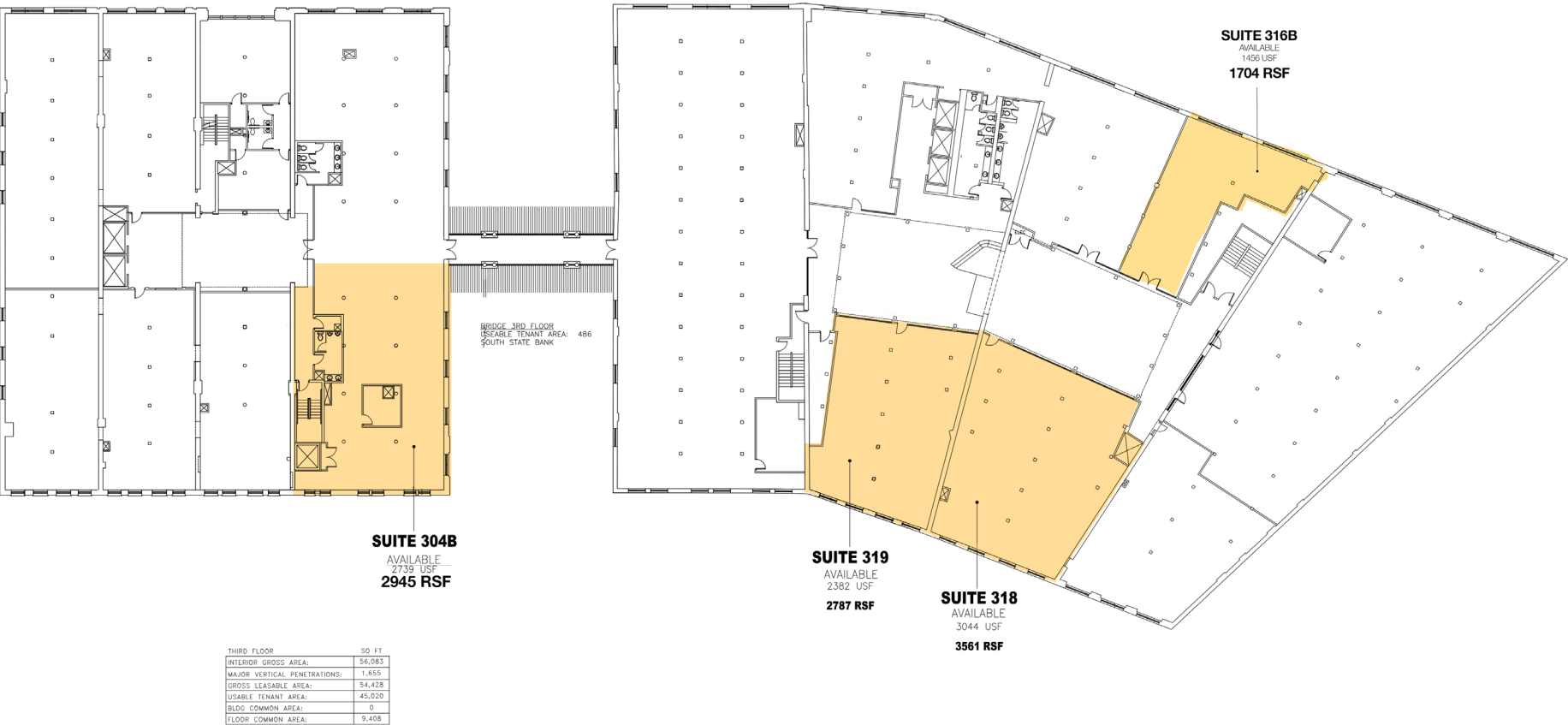


SECOND FLOOR	50 FT
INTERIOR GROSS AREA:	57,813
MAJOR VERTICAL PENETRATIONS:	6,008
GROSS LEASABLE AREA:	51,805
USABLE TENANT AREA:	39,661
BLDG COMMON AREA:	0
FLOOR COMMON AREA:	12,144

WAREHOUSE ROW

1110 Market Street | Chattanooga, Tennessee

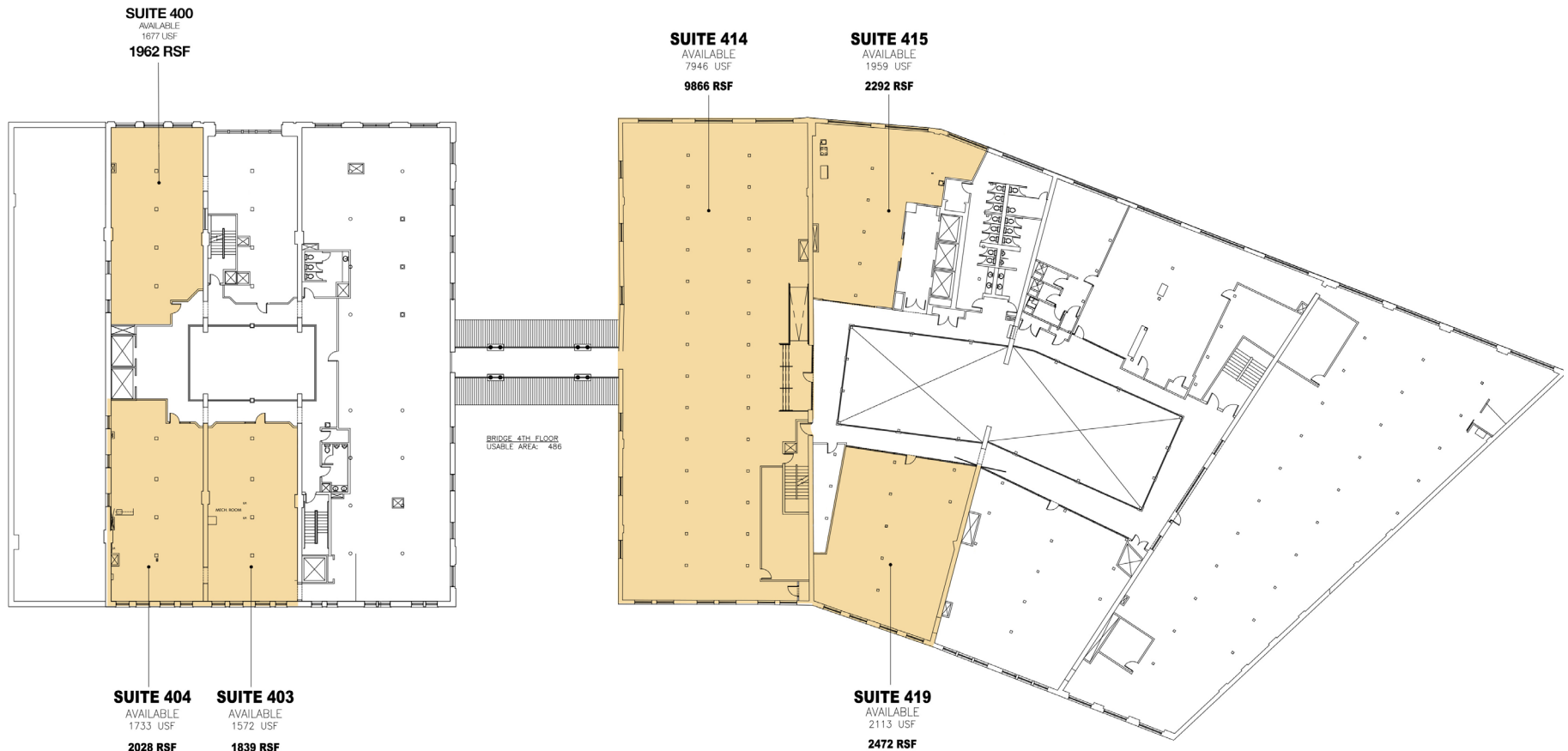
Third Floor Plan - Available Suites



WAREHOUSE ROW

1110 Market Street | Chattanooga, Tennessee

Fourth Floor Plan - Available Suites

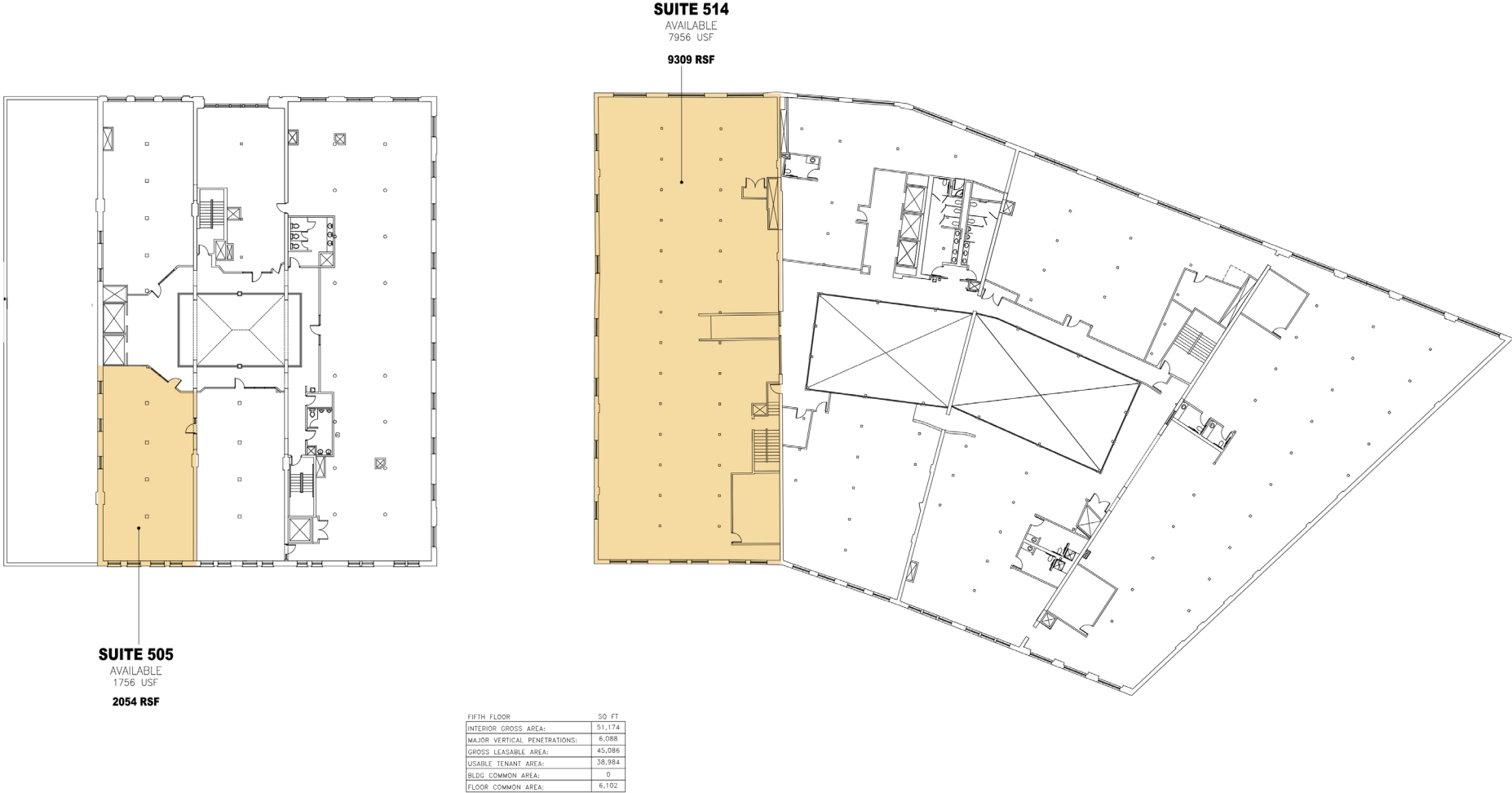


FOURTH FLOOR	30 FT
INTERIOR GROSS AREA:	51,667
MAJOR VERTICAL PENETRATIONS:	2,740
GROSS LEASABLE AREA:	48,927
USABLE TENANT AREA:	38,537
BLDG COMMON AREA:	0
TOTAL COMMON AREA:	10,390

WAREHOUSE ROW

1110 Market Street | Chattanooga, Tennessee

Fifth Floor Plan - Available Suites



WAREHOUSE ROW

1110 Market Street | Chattanooga, Tennessee



WAREHOUSE ROW

1110 Market Street | Chattanooga, Tennessee

Miles to Major Cities

1 Nashville
135 miles

2 Birmingham
148 miles

3 Knoxville
110 miles

4 Atlanta
120 miles



Warehouse Row | 8

WAREHOUSE ROW

1110 Market Street | Chattanooga, Tennessee

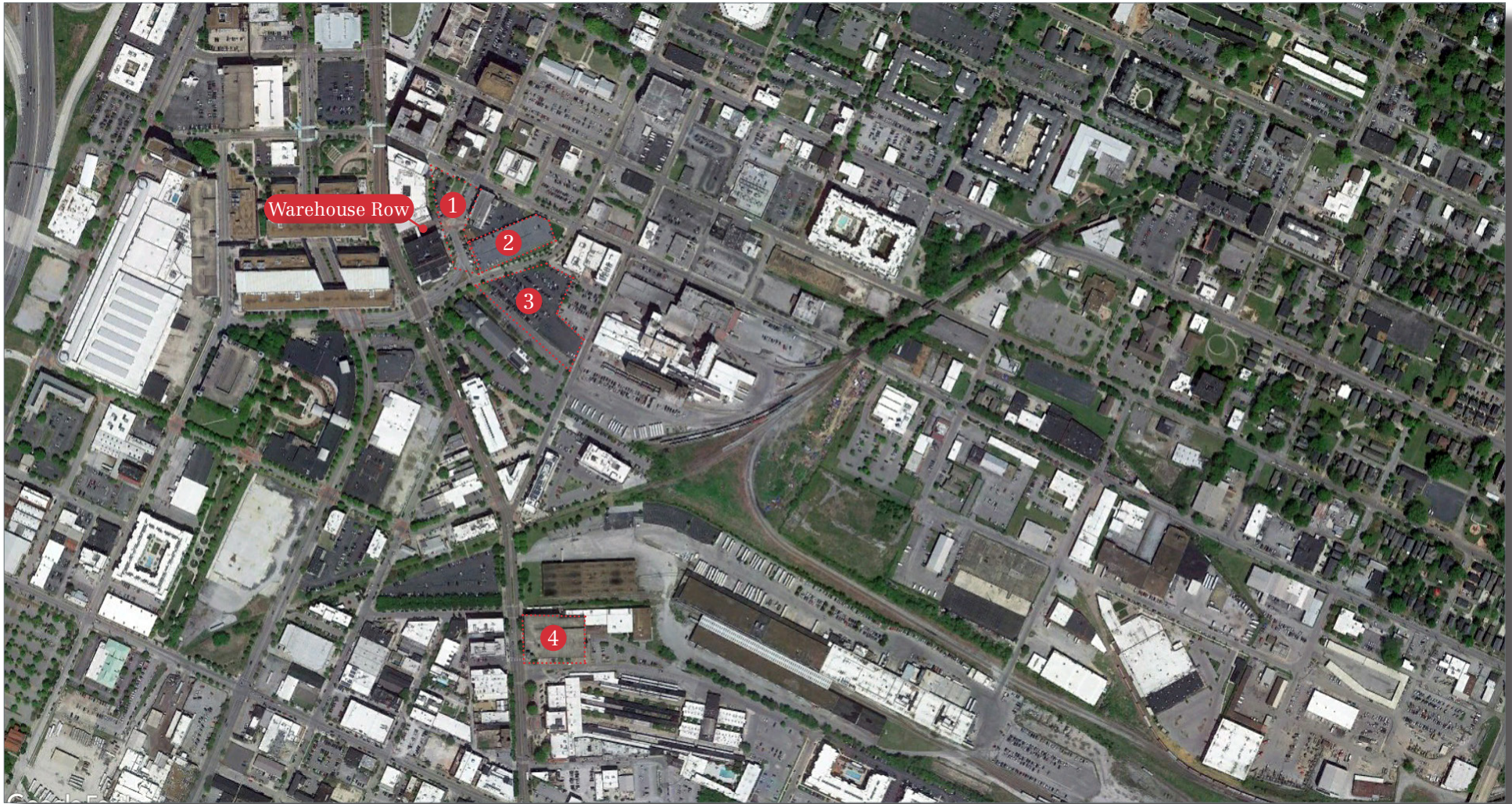
Parking Options

① Metered Parking

② \$80 per month

③ \$75 per month

④ \$40 per month



Warehouse Row | 9

1110 Market Street | Chattanooga, Tennessee



Amenities

FOOD/BEVERAGES

- | | |
|----|--|
| 1 | Goodfellas Pizzeria |
| 2 | St. John's |
| 3 | Urban Stack |
| 4 | Southern Star |
| 5 | FORGE at The Chattanooga Hotel |
| 6 | Tokyo Chattanooga |
| 7 | Public House Restaurant (inside Warehouse Row) |
| 8 | Tupelo Honey Southern Kitchen (inside Warehouse Row) |
| 9 | Pickel Barrel |
| 10 | Jimmy John's |
| 11 | City Cafe Dinner |
| 12 | The Read House |
| 13 | Mexiville |
| 14 | Jack Brown's Beer & Burger Joint |
| 15 | Old Gilman Grill |
| 16 | Unknown Caller |
| 17 | Six18 Restaurant & Lounge |
| 18 | Universal Joint |
| 19 | Cadence Coffee Company |
| 20 | The Walden Club |

TOURISIM

- 1 Chattanooga Whiskey Experimental Distillery
2 Finley Stadium
3 Chattanooga Choo Choo
4 Tivoli Theater
5 AT&T Field
6 Tennessee Aquarium

WAREHOUSE ROW

1110 Market Street | Chattanooga, Tennessee

CONTACT US

D. Frazier DeVaney, Jr.
fdevaney@charterre.com
423.308.3760

Christopher “Pher” Moore
cmoore@charterre.com
423.308.3772

+1 423.267.6549

520 Lookout Street
Chattanooga, TN 37403

www.naicharter.com

NO WARRANTY OR REPRESENTATION, EXPRESS OR IMPLIED, IS MADE AS TO THE ACCURACY OF THE INFORMATION CONTAINED HEREIN, AND THE SAME IS SUBMITTED SUBJECT TO ERRORS, OMISSIONS, CHANGE OF PRICE, RENTAL OR OTHER CONDITIONS, PRIOR SALE, LEASE OR FINANCING, OR WITHDRAWAL WITHOUT NOTICE, AND OF ANY SPECIAL LISTING CONDITIONS IMPOSED BY OUR PRINCIPALS NO WARRANTIES OR REPRESENTATIONS ARE MADE AS TO THE CONDITION OF THE PROPERTY OR ANY HAZARDS CONTAINED THEREIN ARE ANY TO BE IMPLIED.

NAICharter