

992 Witham Drive  
Muskegon, Michigan



INVESTMENT OPPORTUNITY!



## Office | For Sale

- Building Total: 1,223 Square Feet
- Zoned R-4/C-2
- Year Built: 2013
- 8' Ceiling Height

Positioned for both new and seasoned investors, this well-maintained single-tenant office property offers a stable investment opportunity. Occupied by a State Farm Insurance Agency, the asset features secure tenancy with approximately three years remaining on the initial lease term.

Strategically located at the intersection of Witham and Dykstra, the property benefits from strong accessibility and immediate proximity to the Whitehall Road commercial corridor. The building is efficiently designed with a functional layout including private offices, conference room, reception area, and kitchenette.

Recent capital improvements, including a newly paved asphalt drive and parking lot, enhance both curb appeal and long-term value.

**Sale Price: \$174,900**

For more information, please contact:

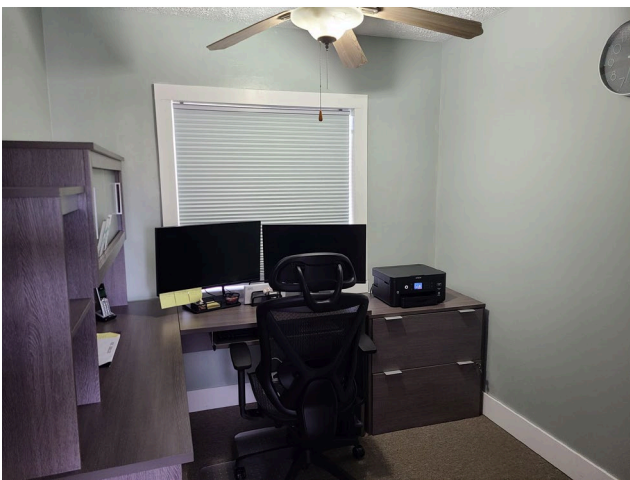
BRYAN BENCH  
231 578 2508  
bryanbench@corerealty.com

Connect with us:



**CORE REALTY PARTNERS**  
700 Terrace Point Drive, Suite 200  
Muskegon, MI 49440  
www.corecommercialrealty.com

Photos



For more information, please contact:

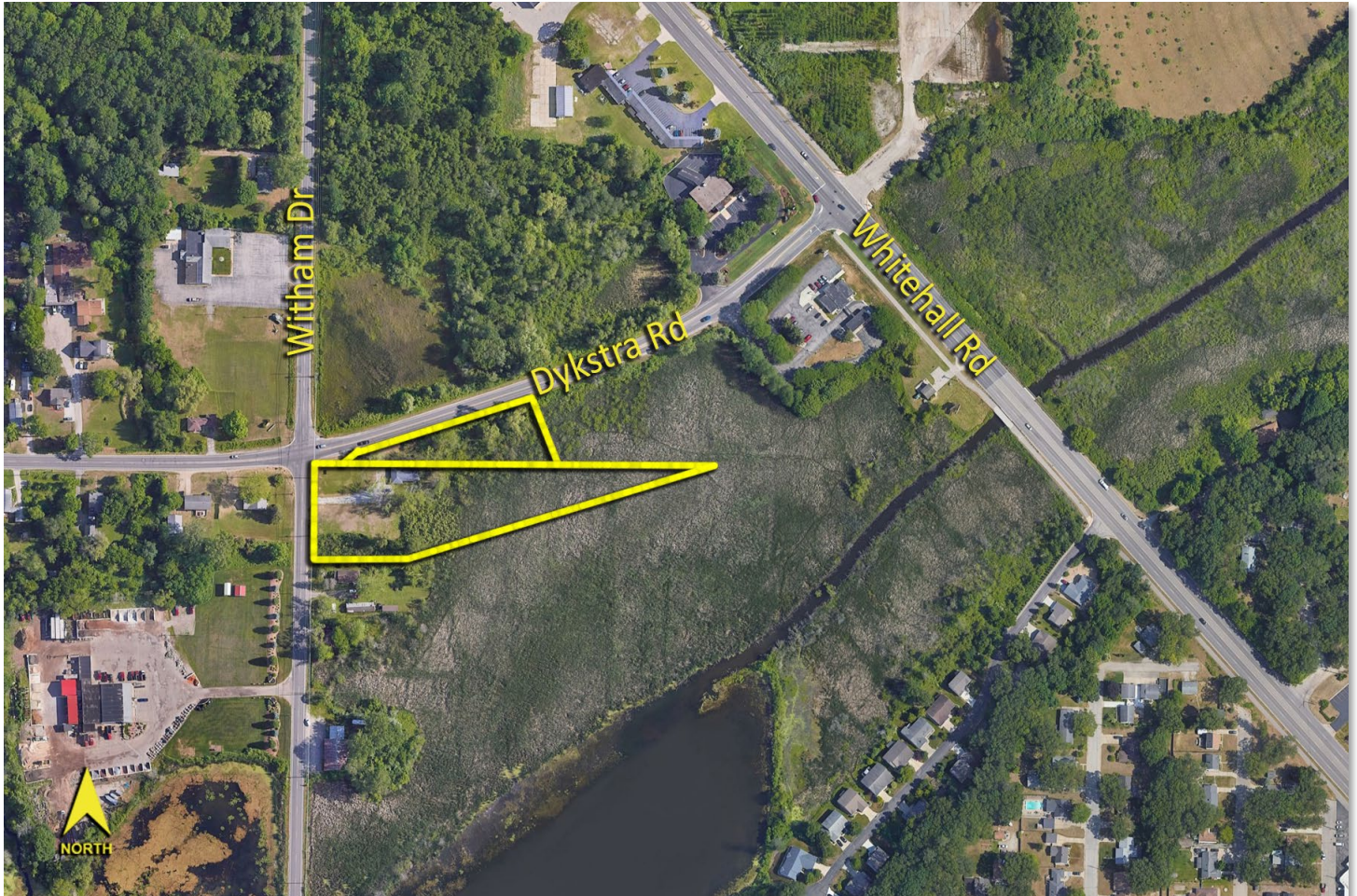
BRYAN BENCH  
231 578 2508  
bryanbench@corerealty.com

Connect with us:



**CORE REALTY PARTNERS**  
700 Terrace Point Drive, Suite 200  
Muskegon, MI 49440  
www.corecommercialrealty.com

Aerial



For more information, please contact:

BRYAN BENCH  
231 578 2508  
bryanbench@corealty.com

Connect with us:



**CORE REALTY PARTNERS**  
700 Terrace Point Drive, Suite 200  
Muskegon, MI 49440  
www.corecommercialrealty.com