

# PROFESSIONAL OFFICE SPACE

## PRIVATE OFFICE W/ RECEPTION AREA\*



**CONFERENCE**



**OFFICE**



**RECEPTION**

**629 N. MAIN STREET, OFFICE #1, ORANGE, CA 92868**

About: Executive style office suites available  
Shared common areas  
Professional office environment

Features:

- Access to share conference room,
- High speed Wi-Fi & electricity included
- Shared restroom and kitchenette
- Reception area also available for an additional fee\*
- Free, open parking
- 24/7 Access

Location:

- Near Old Towne Orange & Orange Circle
- Minutes from Chapman University
- Quick access to multiple freeways - 5, 57, 22, 55



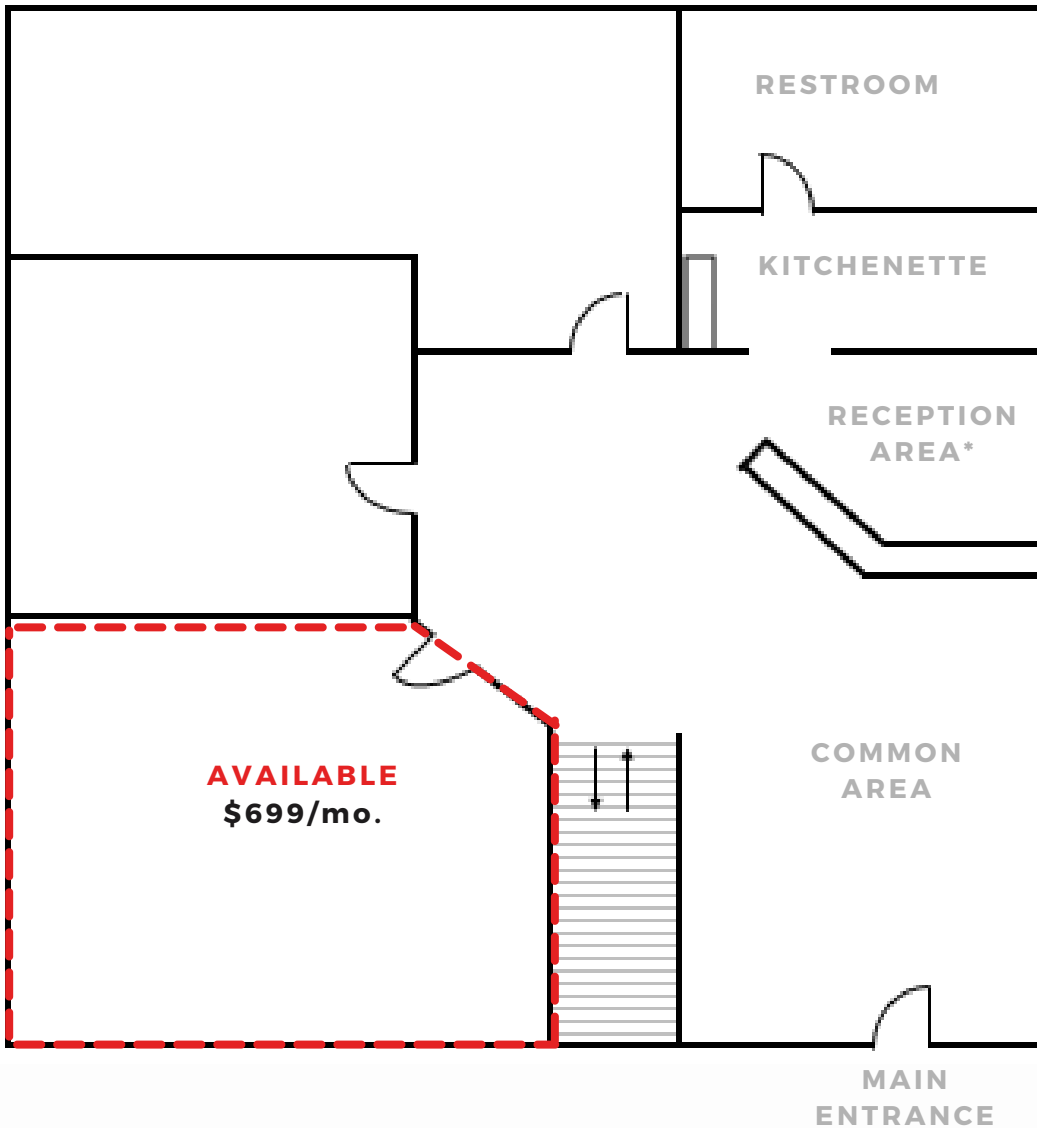
**CHANTEL AGUILAR**  
(562) 447-0665  
[CHANTEL@ASHWILLASSOCIATES.COM](mailto:CHANTEL@ASHWILLASSOCIATES.COM)  
CORP DRE#01291393/LIC.#01972085

**Ashwill**  
**Associates**  
COMMERCIAL REAL ESTATE

# AVAILABILITY

## PRIVATE OFFICE SPACES

FLOORPLAN NOT TO SCALE\*



### OFFICE FEATURES

- Asking Rate: \$699/month
- Features:
- First floor office
  - High speed Wi-Fi & electricity included
  - Furnished with desk and chairs
  - Shared restroom and kitchenette
  - Reception area also available for an additional fee\*

**\*RECEPTION AREA AVAILABLE FOR AN ADDITIONAL \$150/MONTH**



CHANTEL AGUILAR  
(562) 447-0665  
[CHANTEL@ASHWILLASSOCIATES.COM](mailto:CHANTEL@ASHWILLASSOCIATES.COM)  
CORP DRE#01291393/LIC.#01972085

FLOORPLAN NOT TO SCALE



**FEATURES**  
WI-FI INCLUDED  
ACCESS TO CONFERENCE ROOM  
24/7 ACCESS



**PARKING**  
FRONT & SIDE BUILDING PARKING  
FREE PARKING



**PROFESSIONAL OFFICE**  
WELL MAINTAINED & CLEAN OFFICE  
FIRST FLOOR SUITE  
FRONT AND REAR ENTRANCES



**LOCATION**  
MINUTES FROM OLD TOWNE ORANGE  
NEAR MANY LOCAL EATERIES



**ACCESS**  
CONVENIENT FREEWAY ACCESS

