

PARKWAY BUSINESS CENTER

FOR LEASE - 2,100 - 4,413 SF



2125-2133 GREAT SOUTHWEST PARKWAY,
GRAND PRAIRIE, TEXAS 75051



ALEX BRYAN

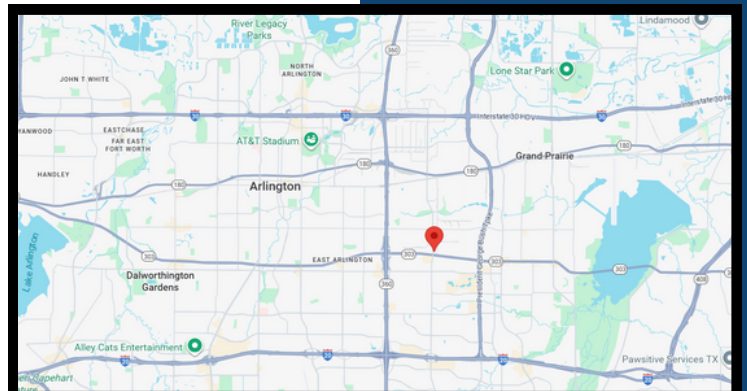
972-965-2878

ALEX@RICHYOUNGCOMPANY.COM

GARRETT GOLDSTEIN

214-364-0674

GARRETT@RICHYOUNGCOMPANY.COM



PARKWAY BUSINESS CENTER

FOR LEASE - 2,100 - 4,413 SF

Property Details

- Well established business park
- Diversified tenant mix
- 24/7 Tenant controlled HVAC
- 16' Clear Height
- Expansion flexibility from current landlord
- Dock High & Grade Level Loading Available
- Easy access to 360, 20 and 30
- Flex and Industrial spaces that have been made ready for quick deals

ALEX BRYAN

972-965-2878

ALEX@RICHYOUNGCOMPANY.COM

GARRETT GOLDSTEIN

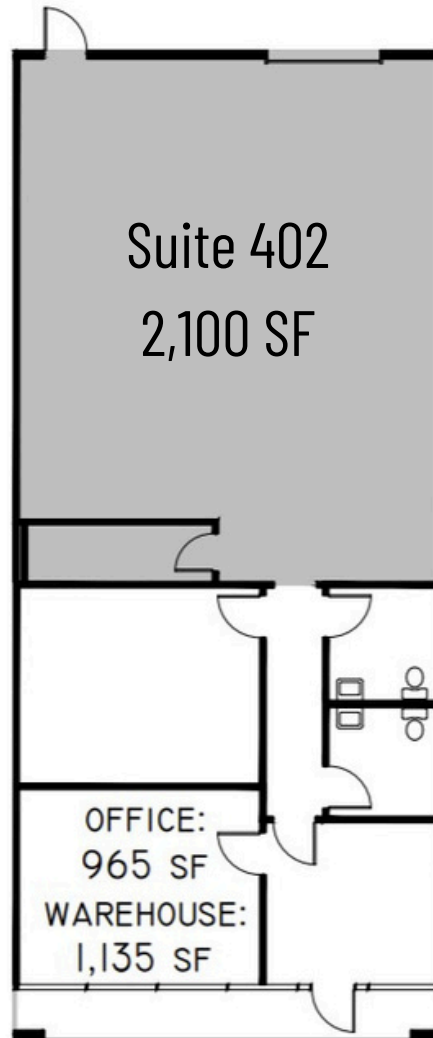
214-364-0674

GARRETT@RICHYOUNGCOMPANY.COM



PARKWAY BUSINESS CENTER

FOR LEASE - 2,100 - 4,413 SF



ALEX BRYAN

972-965-2878

ALEX@RICHYOUNGCOMPANY.COM

GARRETT GOLDSTEIN

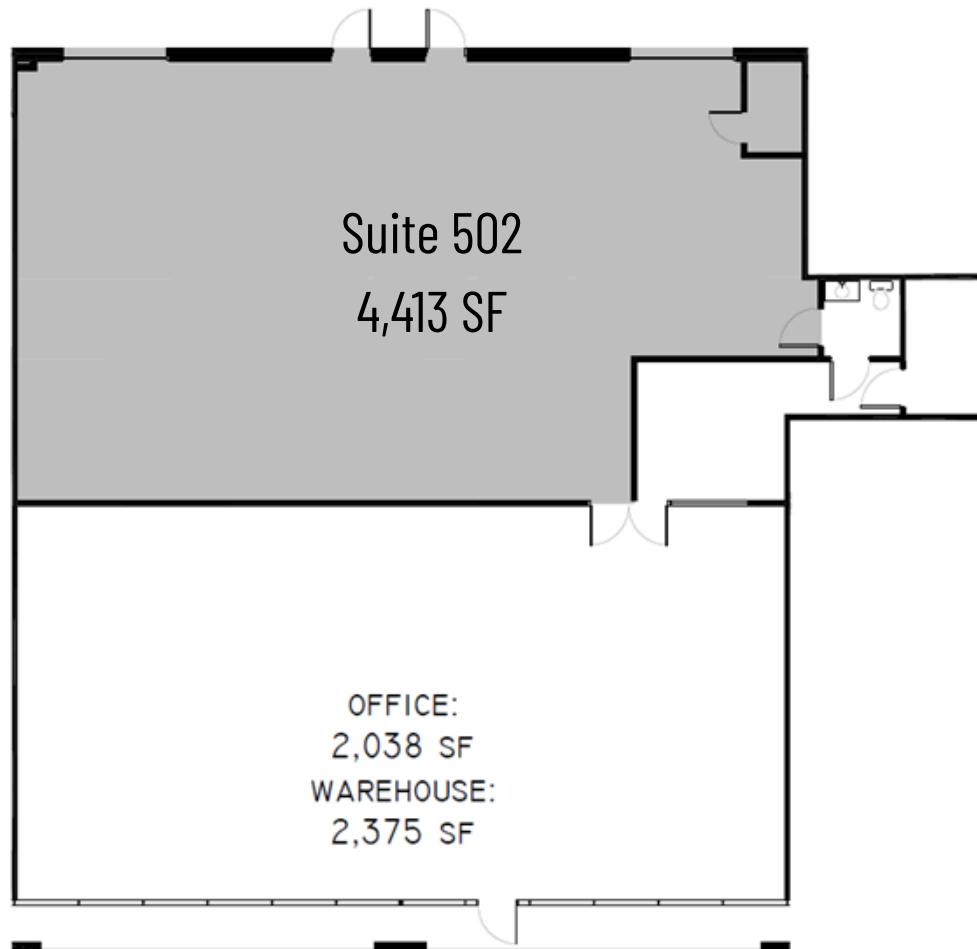
214-364-0674

GARRETT@RICHYOUNGCOMPANY.COM



PARKWAY BUSINESS CENTER

FOR LEASE - 2,100 - 4,413 SF



ALEX BRYAN

972-965-2878

ALEX@RICHYOUNGCOMPANY.COM

GARRETT GOLDSTEIN

214-364-0674

GARRETT@RICHYOUNGCOMPANY.COM

