



NOW LEASING

UNION PARK

3

6985 UNION PARK AVENUE
SALT LAKE CITY, UTAH



STANTON ROAD
CAPITAL

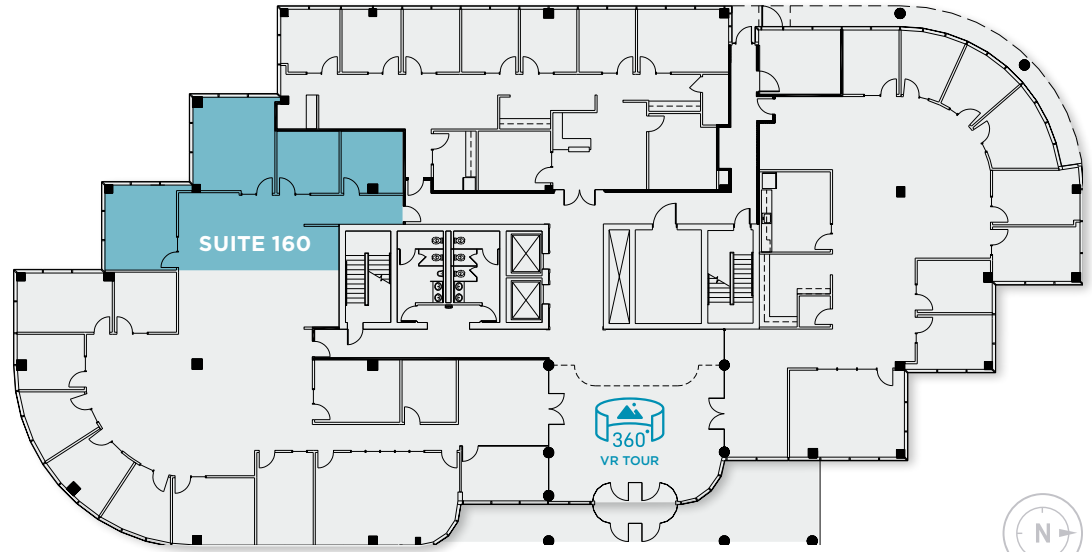
UNION PARK 3

\$28.50

PSF, FULL SERVICE

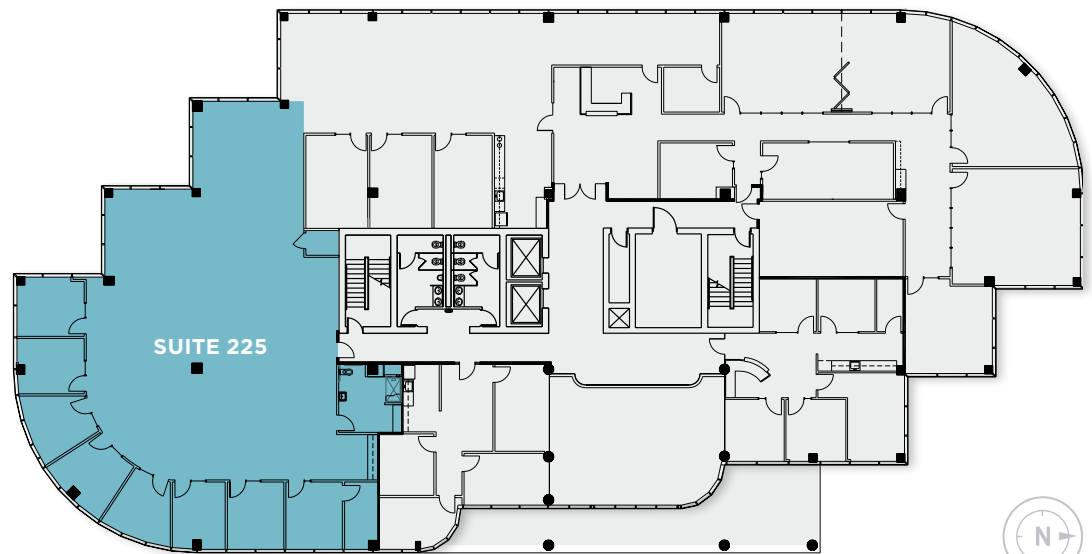
CLASS A FINISHES

Each **UNION PARK** building has a two-story open atrium lobby. The buildings have stunning views of the Salt Lake Valley. Covered parking is available and the buildings are equipped with high-speed fiber optic network and Internet connectivity, as well as centralized security and surveillance.



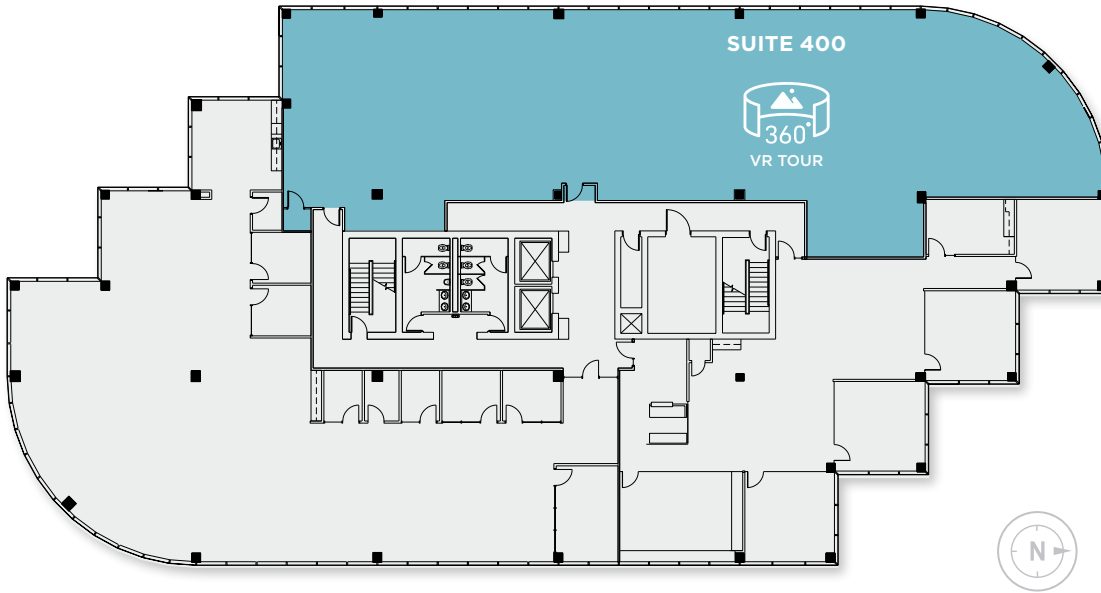
FIRST FLOOR

Floor	Suite	Size	Available
1	160	1,579 RSF	Immediately



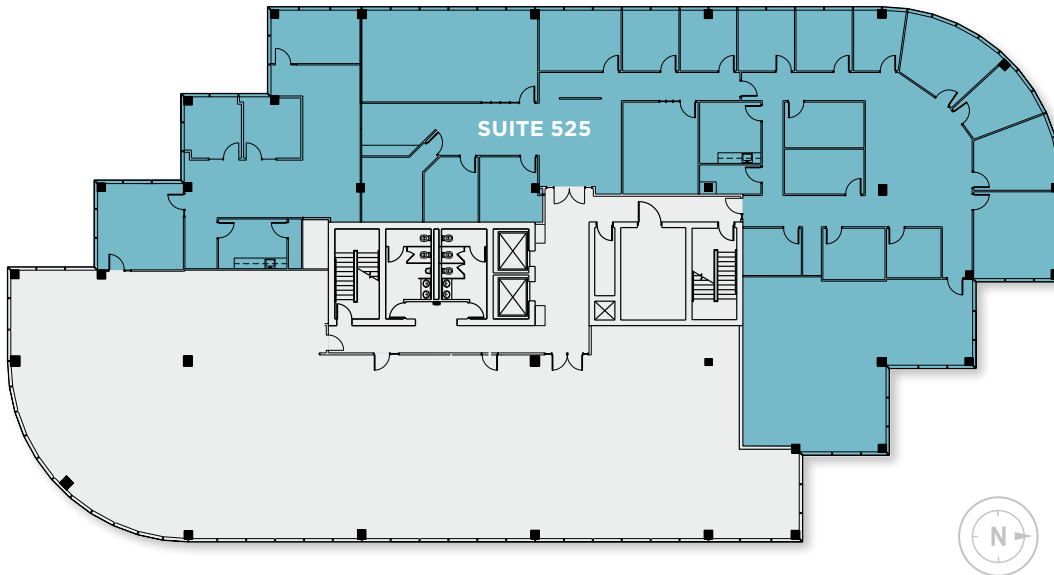
SECOND FLOOR

Floor	Suite	Size	Available
2	225	4,589 RSF	90 Days Notice



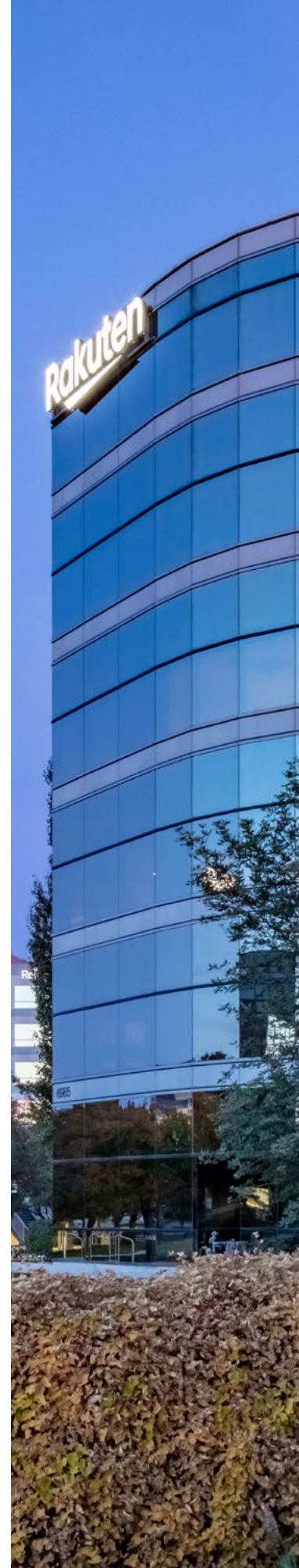
FOURTH FLOOR

Floor	Suite	Size	Available
4	400	6,737 RSF	Immediately



FIFTH FLOOR

Floor	Suite	Size	Available
5	525	11,032 RSF	Immediately



UNION PARK 3



SURROUNDING AREA

Conveniently located in the center of Salt Lake, within minutes of fine residential neighborhoods as well as the major freeway system, Fashion Place Mall and numerous restaurants and lodging.

Dana Baird, ccim
Executive Managing Director
+1 801 303 5526
dana.baird@cushwake.com

Mike Richmond
Executive Managing Director
+1 801 303 5434
mike.richmond@cushwake.com

SRC
STANTON ROAD
CAPITAL

CUSHMAN & WAKEFIELD
170 South Main Street Suite 1600
Salt Lake City, UT
+1 801 322 2000 cushmanwakefield.com