

CHARLES HAWKINS CO.

FOR SALE

(3) Parcels Available

Prime Opportunity to Purchase Parcels in one of Middle Tennessee's Fastest-Growing Counties

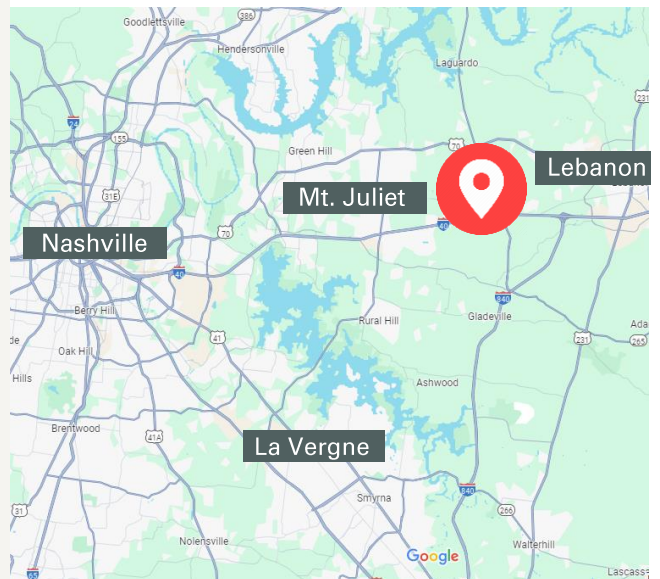
470, 564, & 615 Sullivan Bend Rd, Mt. Juliet, TN 37122



HIGHLIGHTS

- 470 Sullivan Bend Rd:
 - ±1,941 SF of Improvements on 1.55 Acres
 - Map 078; Parcel 046.00
- 564 Sullivan Bend Rd:
 - ±2,162 SF of Improvements on 2.02 Acres
 - Map 078; Parcel 049.01
- 615 Sullivan Bend Rd:
 - ±47 Acres
 - Map 078; Parcel 049.00
- Sale Price: Contact Broker
- Parcels offer visibility from I-40
- Possible future access at Beckwith Road and I-40
- Zoned R1 - This district is intended to accommodate single-family housing types in very low-density residential developments. Immediately adjacent to CG on the West and IL to the North. Link below for Wilson County zoning ordinance for R1, and Lebanon CG and IL. This is county land immediately adjacent to the Lebanon city limits on the North and West with possible opportunity for annexation and/or rezoning.

[Wilson Co. zoning ordinance for R1](#) [Lebanon zoning CG and IL](#)



Jamie Phillips
Vice President
C: 615.517.4607
jphillips@charleshawkinsco.com

Exclusively listed by:
Charles Hawkins Co.
760 Melrose Avenue
Nashville, TN 37211
T: 615.256.3189 / F: 615.254.4026

For Sale
(3) Parcels

470, 564, & 615 Sullivan Bend Rd
Mt. Juliet, TN 37122
Wilson County

CHARLES
HAWKINS CO.



470 Sullivan Bend Rd,
Mount Juliet, TN 37122
±1,941 SF
1.5 Bathrooms
Single family home



564 Sullivan Bend Rd,
Mount Juliet, TN 37122
±2,162 SF
2.5 Bathrooms
Single family home

For Sale
946 Sullivan Bend Rd,
Mount Juliet, TN 37122
±68 Acres

Manheim
Nashville

CEVA
BRIDGETOWN
"Industrial Recycled"

CEVA
Chadwell
SUPPLY

INTERSTATE
40

Sullivan Bend Rd

DEMOGRAPHIC INFORMATION

	2 MILES	5 MILES	10 MILES
	3,650	49,442	177,556
	1,462	18,800	68,065
	\$103,061	\$114,906	\$103,335

Jamie Phillips
Vice President
C: 615.517.4607
jphillips@charleshawkinsco.com

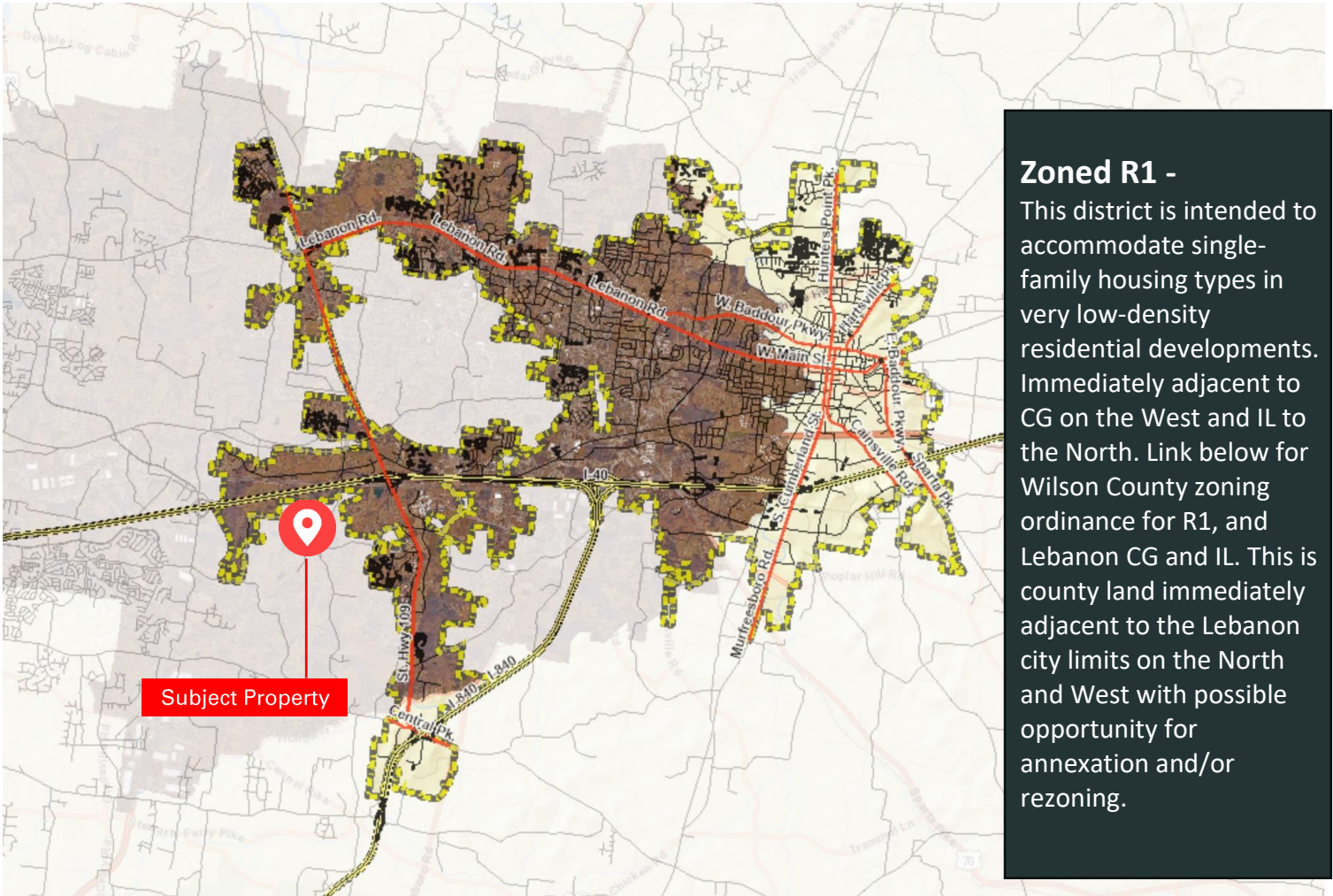
Exclusively listed by:
Charles Hawkins Co.
760 Melrose Avenue
Nashville, TN 37211
T: 615.256.3189 / F: 615.254.4026

For Sale
(3) Parcels

470, 564, & 615 Sullivan Bend Rd
Mt. Juliet, TN 37122
Wilson County

CHARLES
HAWKINS CO.

LEBANON BOUNDARY MAP



Jamie Phillips
Vice President
C: 615.517.4607
jphillips@charleshawkinsco.com

Exclusively listed by:
Charles Hawkins Co.
760 Melrose Avenue
Nashville, TN 37211
T: 615.256.3189 / F: 615.254.4026