

VACANT LOT IN THE HEART OF SARASOTA

1420 5th St, Sarasota, FL 34236



PROPERTY OVERVIEW

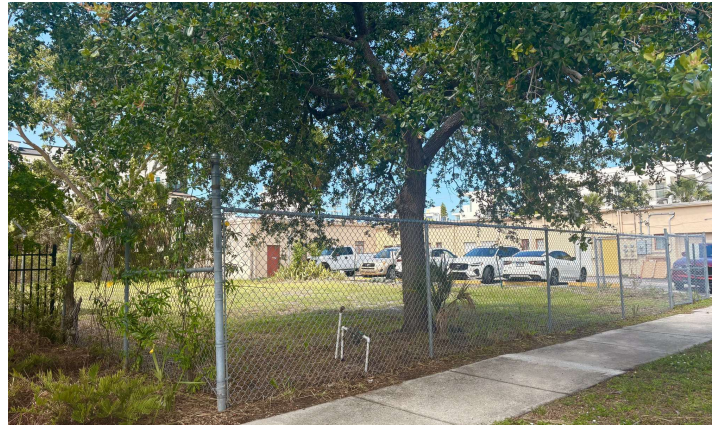
Exceptional Development Opportunity in Sarasota's Sought-After Rosemary District!

Don't miss this rare chance to own prime vacant land in the heart of the thriving Rosemary District—one of Sarasota's most dynamic and rapidly evolving neighborhoods. Zoned DTE (Downtown Edge), this versatile parcel offers a range of possibilities, including retail, office, multi-family residential, or a mixed-use project.

Located just minutes from Downtown Sarasota and within walking distance to trendy cafes, fine dining and shopping, this lot is perfectly positioned for maximum visibility and convenience. Whether you're a developer, investor, or end user, this is one of the few remaining vacant parcels in the downtown core—making it a smart play for long-term value.

PROPERTY SUMMARY

Sale Price:	\$899,000.00
Lot Size:	0.13 Acres
Zoning:	DTE
Price / SF:	\$156.32



JAG GREWAL, CCIM, SIOR
941.356.5042
jag@ian-black.com

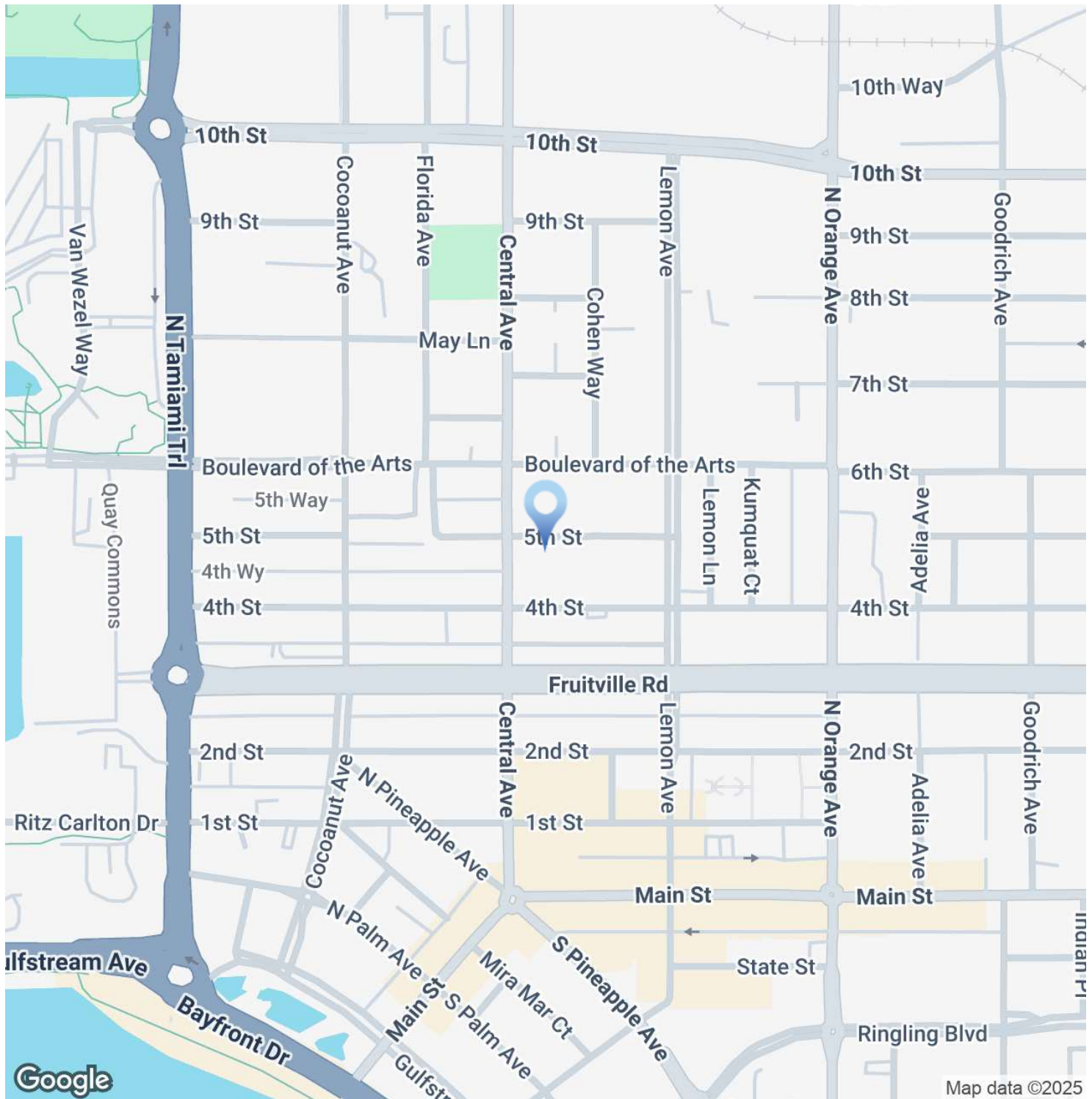


HEIDI HABER
941.323.0557
heidi@ian-black.com

IAN BLACK
REAL ESTATE
THE PLACE FOR SPACE

LOCATION MAP

1420 5th St, Sarasota, FL 34236



JAG GREWAL, CCIM, SIOR
941.356.5042
jag@ian-black.com



HEIDI HABER
941.323.0557
heidi@ian-black.com

IAN BLACK
REAL ESTATE
THE PLACE FOR SPACE

AERIAL MAP

1420 5th St, Sarasota, FL 34236



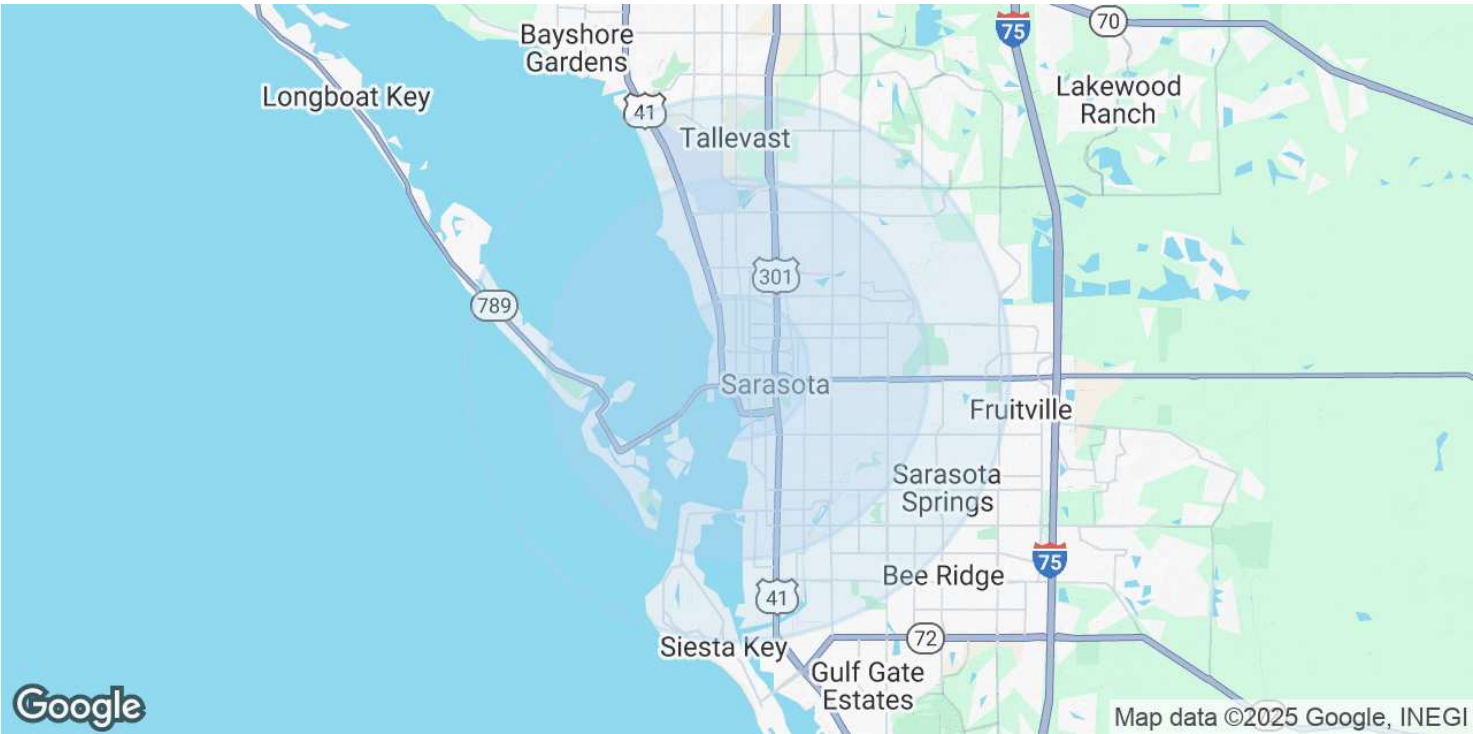
JAG GREWAL, CCIM, SIOR
941.356.5042
jag@ian-black.com



HEIDI HABER
941.323.0557
heidi@ian-black.com

IANBLACK
REAL ESTATE
THE PLACE FOR SPACE

1420 5th St, Sarasota, FL 34236



POPULATION	1.3 MILES	3.5 MILES	5 MILES
Total Population	20,708	79,490	151,924
Average Age	51	50	50
Average Age (Male)	50	48	49
Average Age (Female)	53	51	51
HOUSEHOLDS & INCOME	1.3 MILES	3.5 MILES	5 MILES
Total Households	10,194	36,373	70,222
# of Persons per HH	2	2.2	2.2
Average HH Income	\$100,138	\$99,744	\$102,522
Average House Value	\$715,261	\$547,387	\$516,986

Demographics data derived from AlphaMap



JAG GREWAL, CCIM, SIOR
941.356.5042
jag@ian-black.com



HEIDI HABER
941.323.0557
heidi@ian-black.com

IANBLACK
REAL ESTATE
THE PLACE FOR SPACE