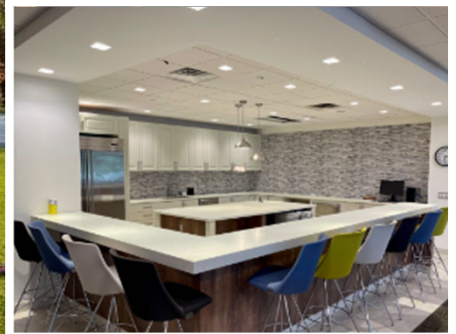


# SUBLEASE AVAILABLE



## 86,079± SF (Divisible) 2701 Renaissance Boulevard KING OF PRUSSIA, PA



### SPACE FEATURES

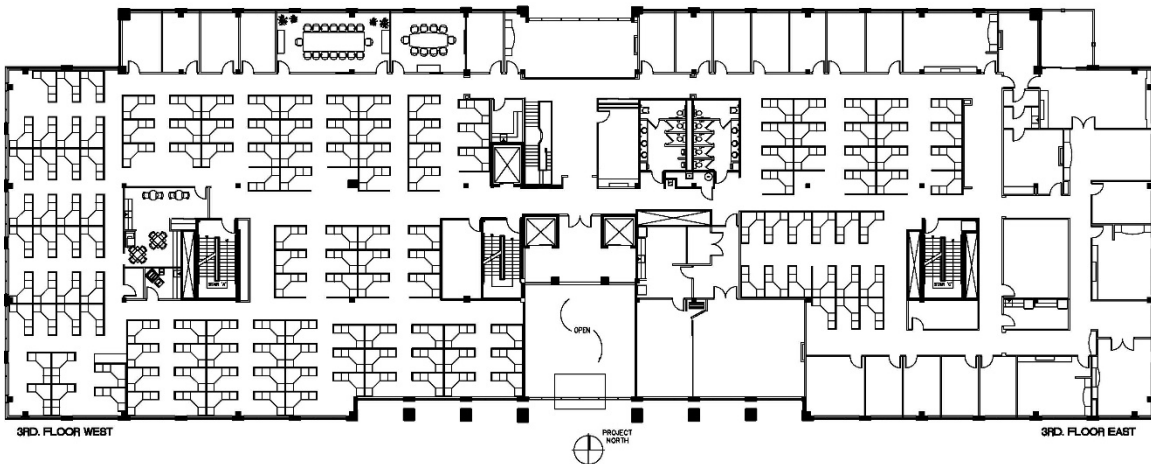
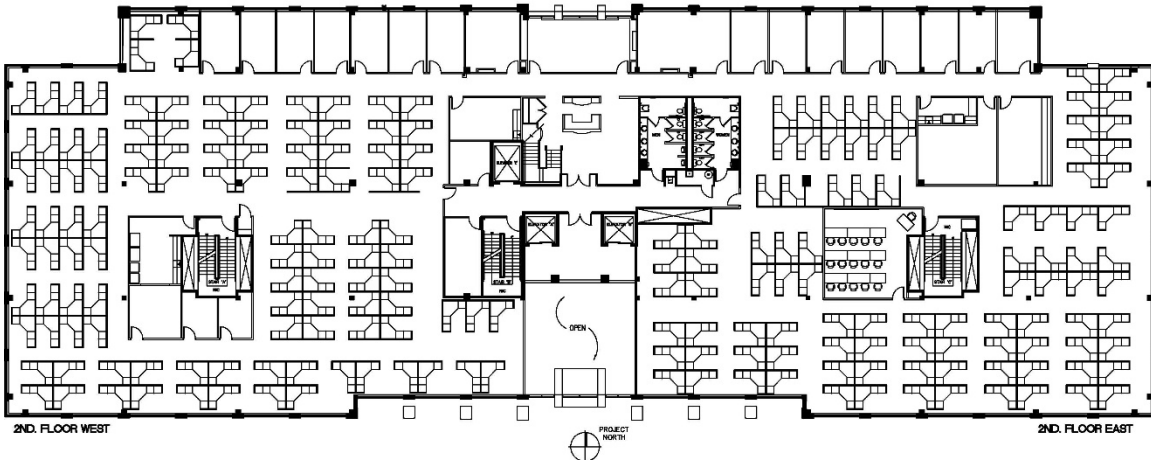
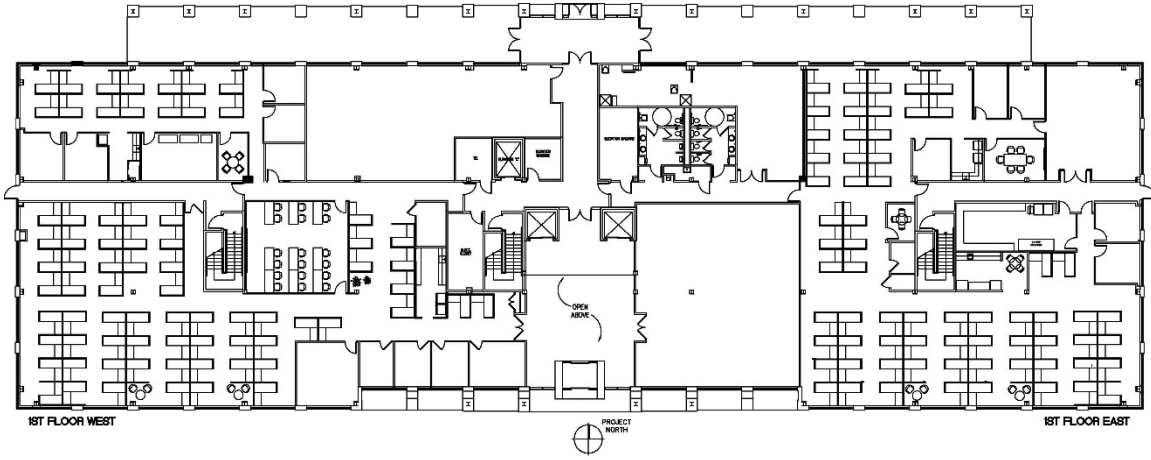
- **Below market asking rent equal to \$19.50/SF + Electric**
- Term expires 7/31/2025
- Available for immediate occupancy with furniture, if necessary
- Premises can be subdivided, if necessary (to a minimum of 2,876+/- SF)
- Exterior building signage can be made available
- Parking ratio equal to 4.00/1,000 SF (with reserved spaces that can be made available)
- Backup generator servicing a portion of the premises
- Minutes from I-76, I-476, and the PA Turnpike (I-276)
- Walking distance to public transportation through Hughes Park Transit Stop (Norristown High Speed Line) or SEPTA 95, 124 & 125 commuter buses.

**MARK GOLA**  
610-517-1607  
mgola@gola.com

**SHANE ALLEN**  
610-906-6850  
sallen@gola.com

**BRIAN NEARY**  
215-219-7069  
bneary@gola.com

# BUILDING FLOORPLANS



**MARK GOLA**  
610-517-1607  
mgola@gola.com

**SHANE ALLEN**  
610-906-6850  
sallen@gola.com

**BRIAN NEARY**  
215-219-7069  
bneary@gola.com