



# Tulsa Industrial For Lease

**MCP** MCGRAW  
COMMERCIAL  
PROPERTIES

NEIL DAILEY, SIOR  
Executive Vice President  
918.853.7337  
ndailey@mcgrawcp.com

KALVIN BURGHOFF  
Vice President  
832.689.7095  
kburghoff@mcgrawcp.com

DAKOTA BRASHER  
Sales Associate  
918.948.5778  
dbrasher@mcgrawcp.com

8531 East 44th Street,  
Tulsa, OK 74145

# Tulsa Industrial For Lease

8531 East 44th Street, Tulsa, OK 74145

Custom Page

## PROPERTY HIGHLIGHTS

### Building Size:

- Office: 12,762 SF
- Warehouse/Manufacturing: 64,605 SF
- Total: +/- 77,367 SF

### Total Site Size:

- Acres: +/- 3.74 AC

### Construction:

- Steel Frame/Metal Siding with concrete slab foundation

### Loading:

- Five (5) grade level doors – 16x16

### Heating/Air-Conditioning:

- Main warehouse (+/- 50,000 SF) and Office are fully climate controlled
- Five (5) package units in warehouse
- Five (5) suspended gas heaters
- Four (4) Enviro-north HVLS Fans

### Ceiling Height:

- 27'8" to the center

### Power:

- Heavy Power – 480v, 3phase, 2000 KVA
- Multiple transformers and panels throughout

### Sprinkler:

- 6" Dry System, fully sprinkled throughout the building.

### Miscellaneous:

- Built-in alarm system

### Office:

- South West Office – 17 hard-walled offices, 1 conference room.
- South East Office – 10 hard-walled offices, 1 conference room, 1 breakroom, 1 storage room.

### Restrooms:

- South West Office – 4 Men's & Women's ADA restrooms
- South East Office – 5 men's ADA Restrooms, 3 women's ADA restrooms

### Parking:

- 50 parking spaces

### Fencing:

- Chain link fence with access gates

### Roof: Metal

Price: \$6.50 / SF + NNN

NEIL DAILEY, SIOR  
Executive Vice President  
918.853.7337  
ndailey@mcgrawcp.com

KALVIN BURGHOFF  
Vice President  
832.689.7095  
kburghoff@mcgrawcp.com

DAKOTA BRASHER  
Sales Associate  
918.948.5778  
dbrasher@mcgrawcp.com

**MCP** MCGRAW  
COMMERCIAL  
PROPERTIES

# Tulsa Industrial For Lease

8531 East 44th Street, Tulsa, OK 74145

[Additional Photos](#)



**NEIL DAILEY, SIOR**  
Executive Vice President  
918.853.7337  
ndailey@mcgrawcp.com

**KALVIN BURGHOFF**  
Vice President  
832.689.7095  
kburghoff@mcgrawcp.com

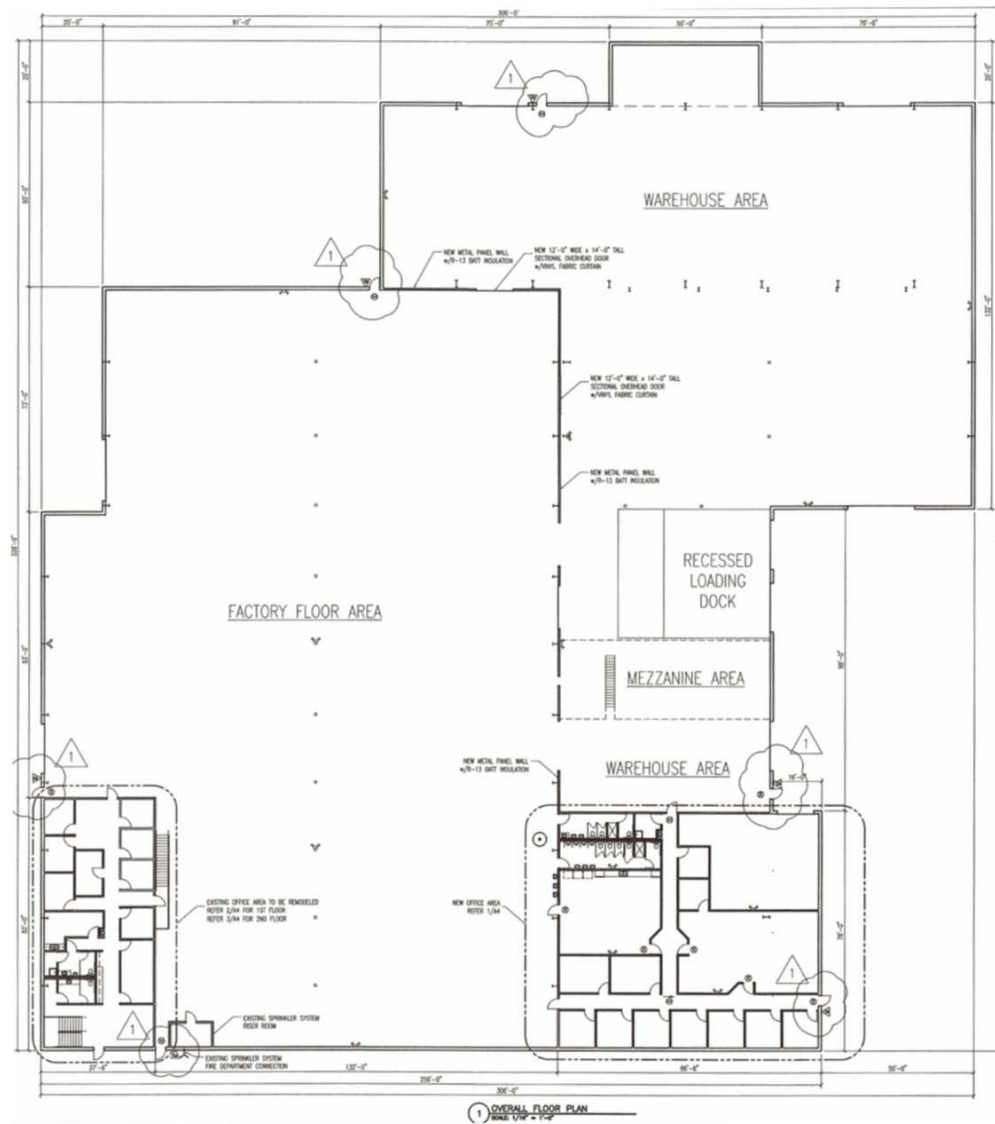
**DAKOTA BRASHER**  
Sales Associate  
918.948.5778  
dbrasher@mcgrawcp.com

**MCP** MCGRAW  
COMMERCIAL  
PROPERTIES

# Tulsa Industrial For Lease

8531 East 44th Street, Tulsa, OK 74145

Floor Plan



NEIL DAILEY, SIOR  
Executive Vice President  
918.853.7337  
ndailey@mcgrawcp.com

KALVIN BURGHOFF  
Vice President  
832.689.7095  
kburghoff@mcgrawcp.com

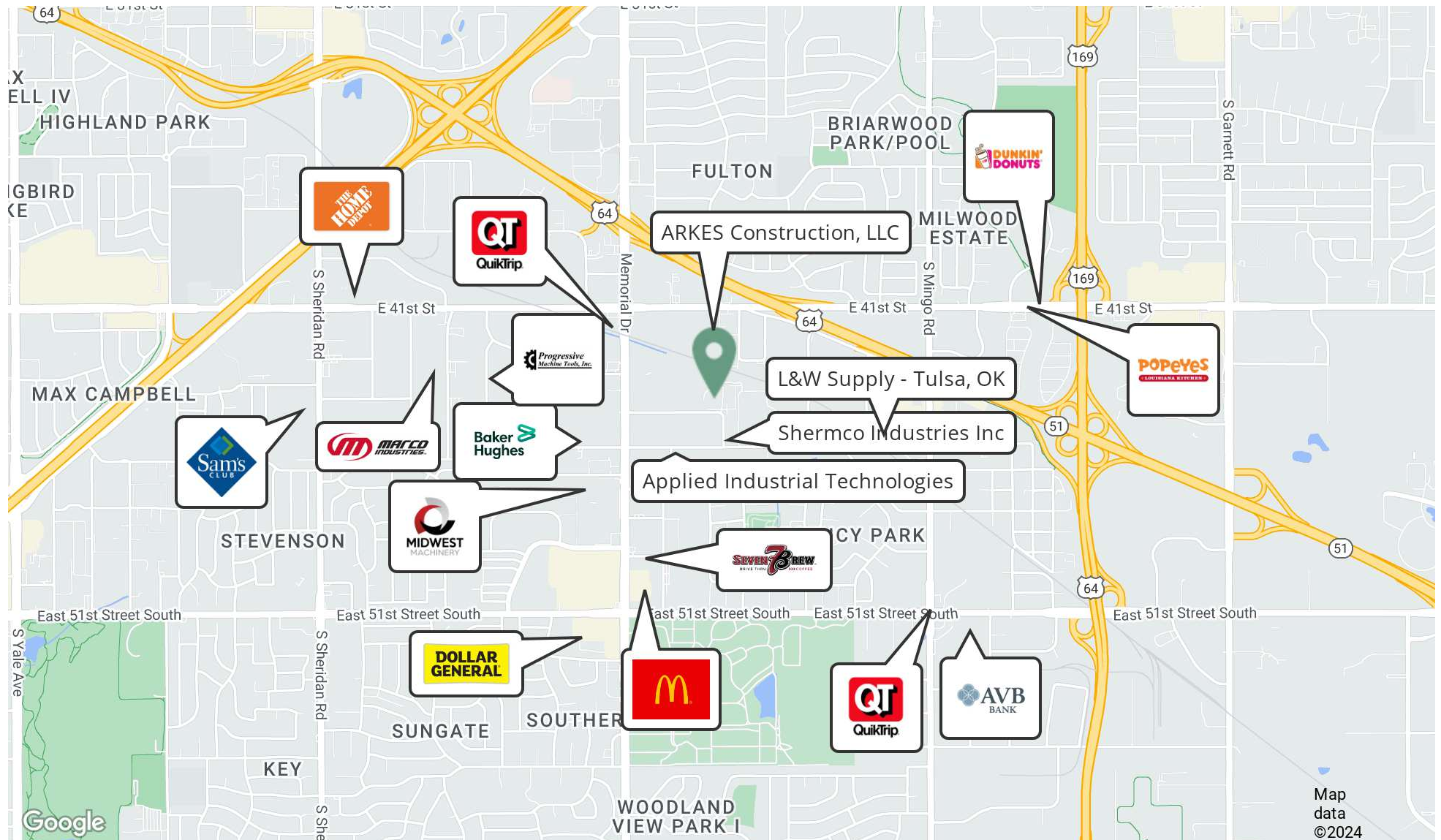
DAKOTA BRASHER  
Sales Associate  
918.948.5778  
dbrasher@mcgrawcp.com

**MCP** MCGRAW  
COMMERCIAL  
PROPERTIES

# Tulsa Industrial For Lease

8531 East 44th Street, Tulsa, OK 74145

Location Map



NEIL DAILEY, SIOR  
Executive Vice President  
918.853.7337  
ndailey@mcgrawcp.com

KALVIN BURGHOFF  
Vice President  
832.689.7095  
kburghoff@mcgrawcp.com

DAKOTA BRASHER  
Sales Associate  
918.948.5778  
dbrasher@mcgrawcp.com

**MCP** MCGRAW  
COMMERCIAL  
PROPERTIES

# Tulsa Industrial For Lease

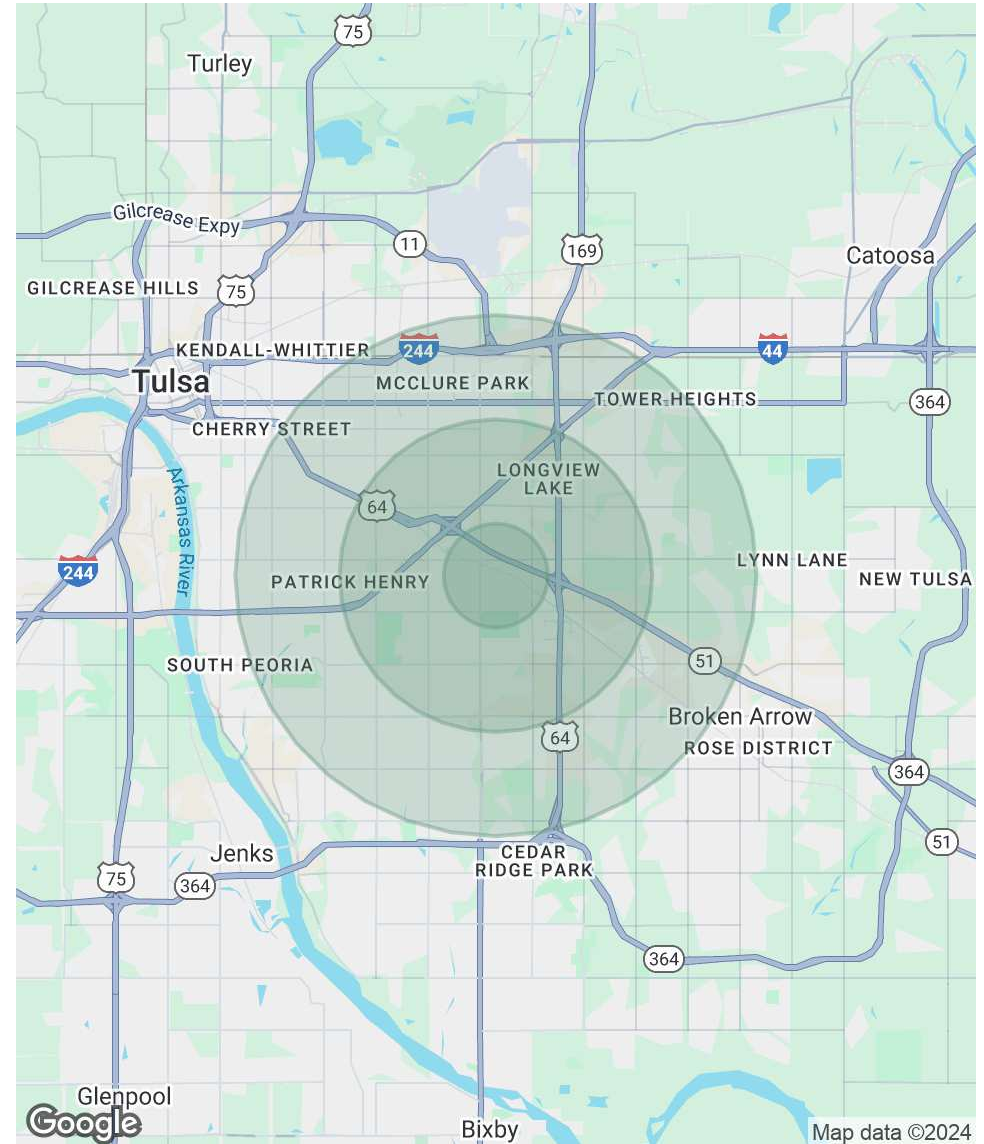
8531 East 44th Street, Tulsa, OK 74145

## Demographics Map & Report

POPULATION	1 MILE	3 MILES	5 MILES
Total Population	8,883	93,226	244,930
Average Age	36	38	40
Average Age (Male)	35	37	38
Average Age (Female)	37	40	41

HOUSEHOLDS & INCOME	1 MILE	3 MILES	5 MILES
Total Households	3,592	38,786	103,319
# of Persons per HH	2.5	2.4	2.4
Average HH Income	\$62,053	\$69,908	\$86,104
Average House Value	\$162,497	\$195,067	\$253,959

Demographics data derived from AlphaMap



NEIL DAILEY, SIOR  
Executive Vice President  
918.853.7337  
ndailey@mcgrawcp.com

KALVIN BURGHOFF  
Vice President  
832.689.7095  
kburghoff@mcgrawcp.com

DAKOTA BRASHER  
Sales Associate  
918.948.5778  
dbrasher@mcgrawcp.com

**MCP** MCGRAW  
COMMERCIAL  
PROPERTIES

# Tulsa Industrial For Lease

8531 East 44th Street, Tulsa, OK 74145

Meet the Team



**NEIL DAILEY, SIOR**

Executive Vice President

Cell: 918.853.7337  
ndailey@mcgrawcp.com



**KALVIN BURGHOFF**

Vice President

Cell: 832.689.7095  
kburghoff@mcgrawcp.com



**DAKOTA BRASHER**

Sales Associate

Cell: 918.948.5778  
dbrasher@mcgrawcp.com

NEIL DAILEY, SIOR  
Executive Vice President  
918.853.7337  
ndailey@mcgrawcp.com

KALVIN BURGHOFF  
Vice President  
832.689.7095  
kburghoff@mcgrawcp.com

DAKOTA BRASHER  
Sales Associate  
918.948.5778  
dbrasher@mcgrawcp.com