

RETAIL SPACE FOR LEASE

960± - 4,000± Rentable Square Feet (Available Now)

2400 Coffee Road, Modesto CA

Tyler Lu
Lic. #02244464
925.918.1547
tylerlu@moinc.net



PROPERTY OVERVIEW

• Vacant and Available Now:

- **Suite B:** 1,420± SF
- **Suite E:** 960± SF
- **Suite J:** 1,200± SF
- **Suite J-2:** 2,800± SF

Suite J and J-2
can be combined
for a total of
4,000 SF

- **Rent:** \$2.00 psf, plus NNN
- **Zoning:** C-C (Commercial Community)
- **# of Parking Spaces:** 385±

Highlights:

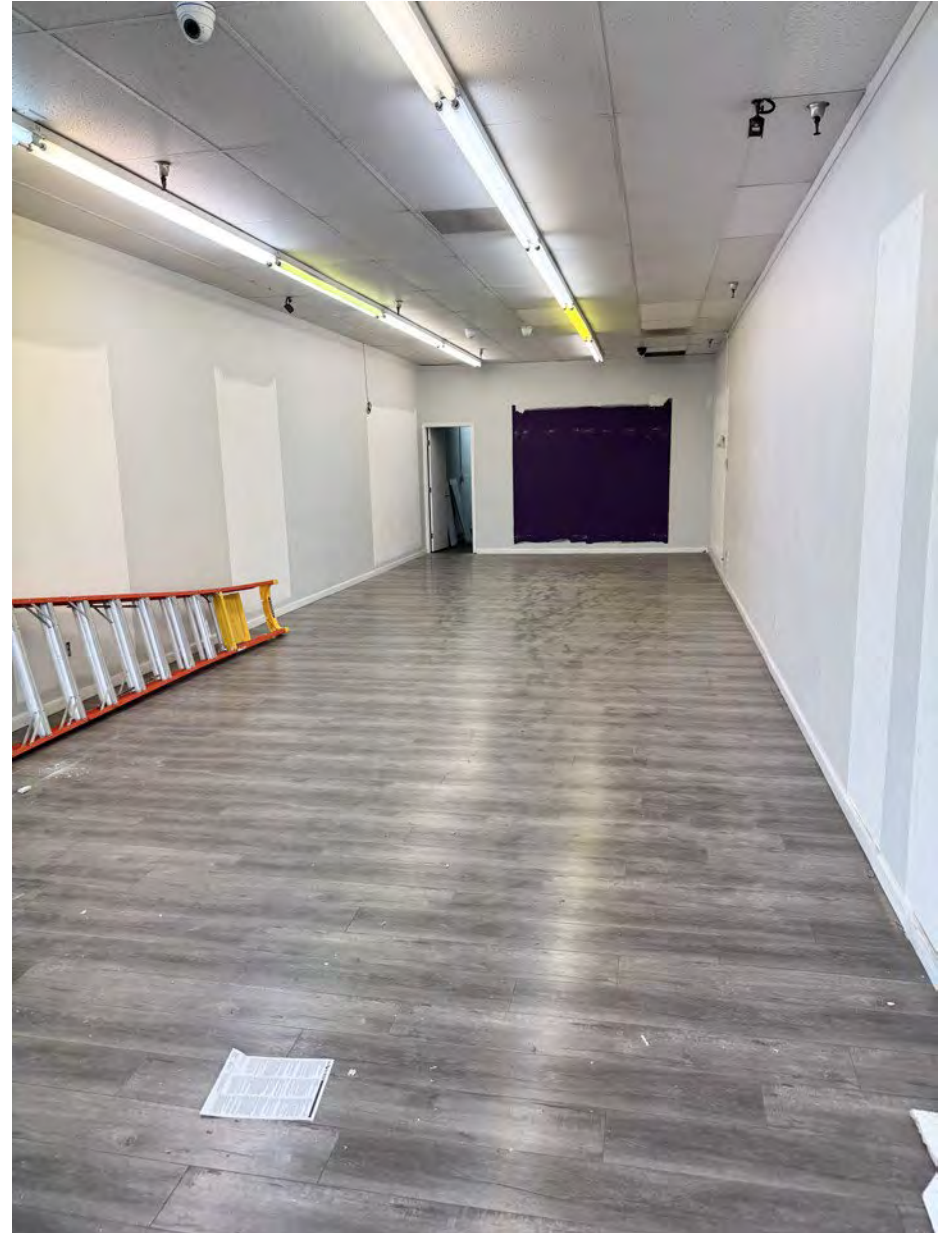
- Building and Monument Signage.
- Property has a newly renovated roof, parking lot, and painted exterior.
- Co-tenants: dd's Discounts, Family Dollar, Modesto Power, Grand Buffet, My Garden Café, Sultan Market & Restaurant, Viet Restaurant, and more.
- Traffic Count: 30,060 + ADT.
- Easy Access into Center from Both Directions.



SUITE E

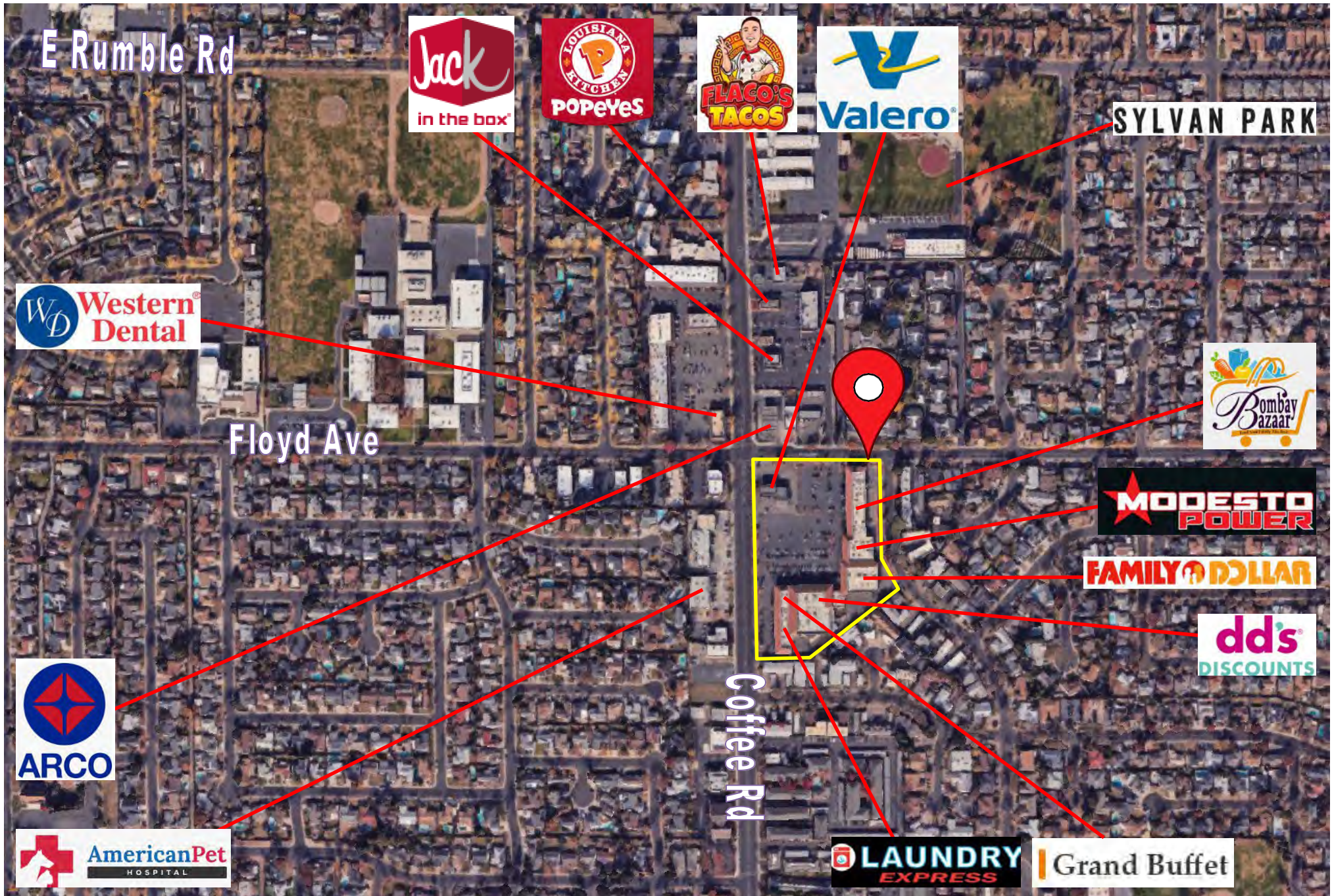


SUITE J





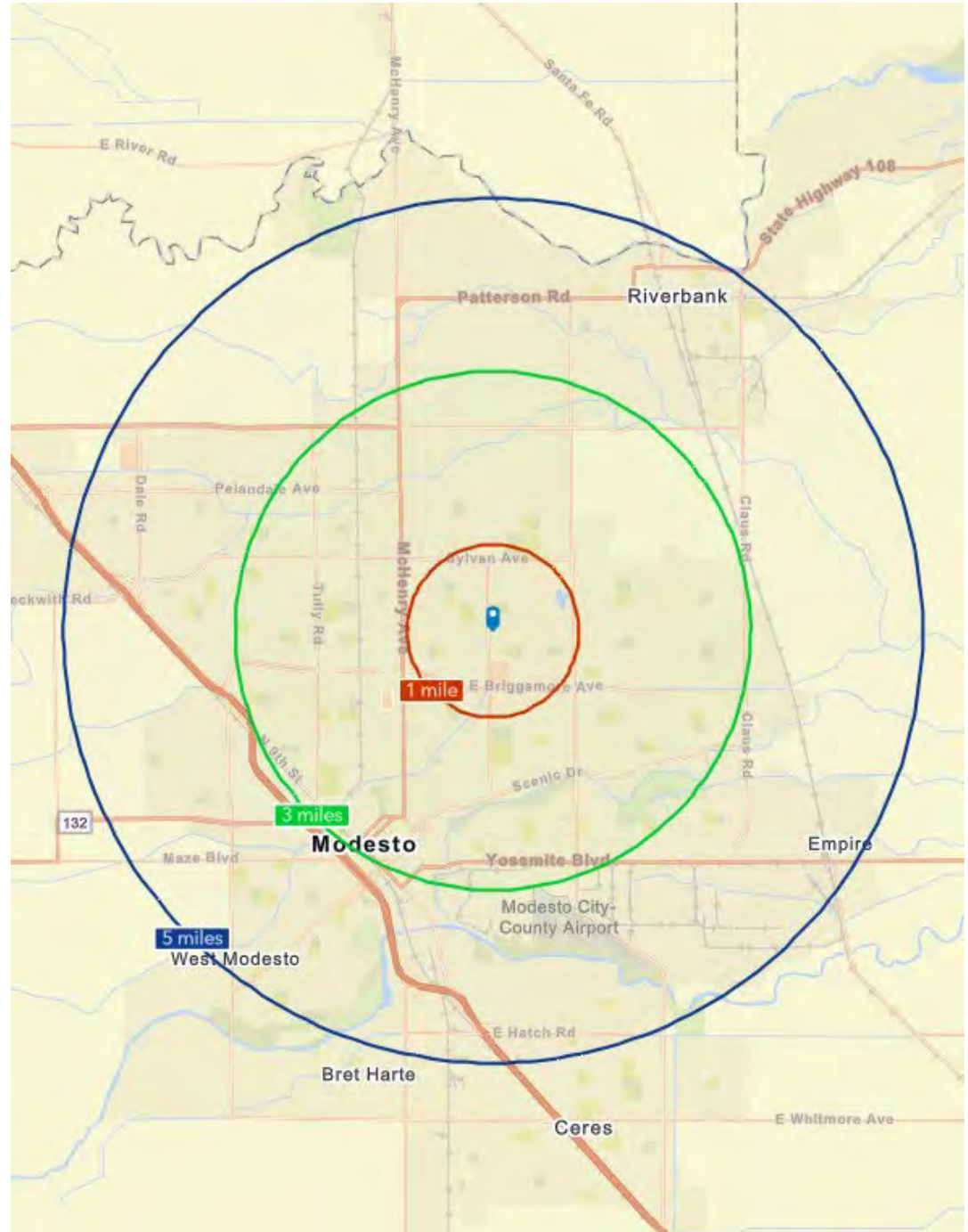
POINTS OF INTEREST



DEMOGRAPHICS



2024 SUMMARY	1-MILE	3-MILE	5-MILE
Population	23,474	142,648	274,639
Households	8,476	50,511	90,282
Average HH Size	2.7	2.7	2.9
Owner Occupied Housing Units	4,258	29,816	52,404
Renter Occupied Housing Units	4,227	21,816	38,863
Median Age	36.5	37.5	36.2
Median Household Income	\$65,934	\$74,341	\$73,235
Average Household Income	\$83,476	\$96,474	\$94,212



The information contained herein has been obtained from sources we deem reliable. We cannot, however, assume responsibility for its accuracy.

2400 Coffee Road Modesto



Meacham/Oppenheimer, Inc.
8 N. San Pedro St., Suite 300
San Jose, California 95110
Tel: 408.378.5900
www.moinc.net

Tyler Lu
+1 925 918 1547
Lic. #02244464
tylerlu@moinc.net