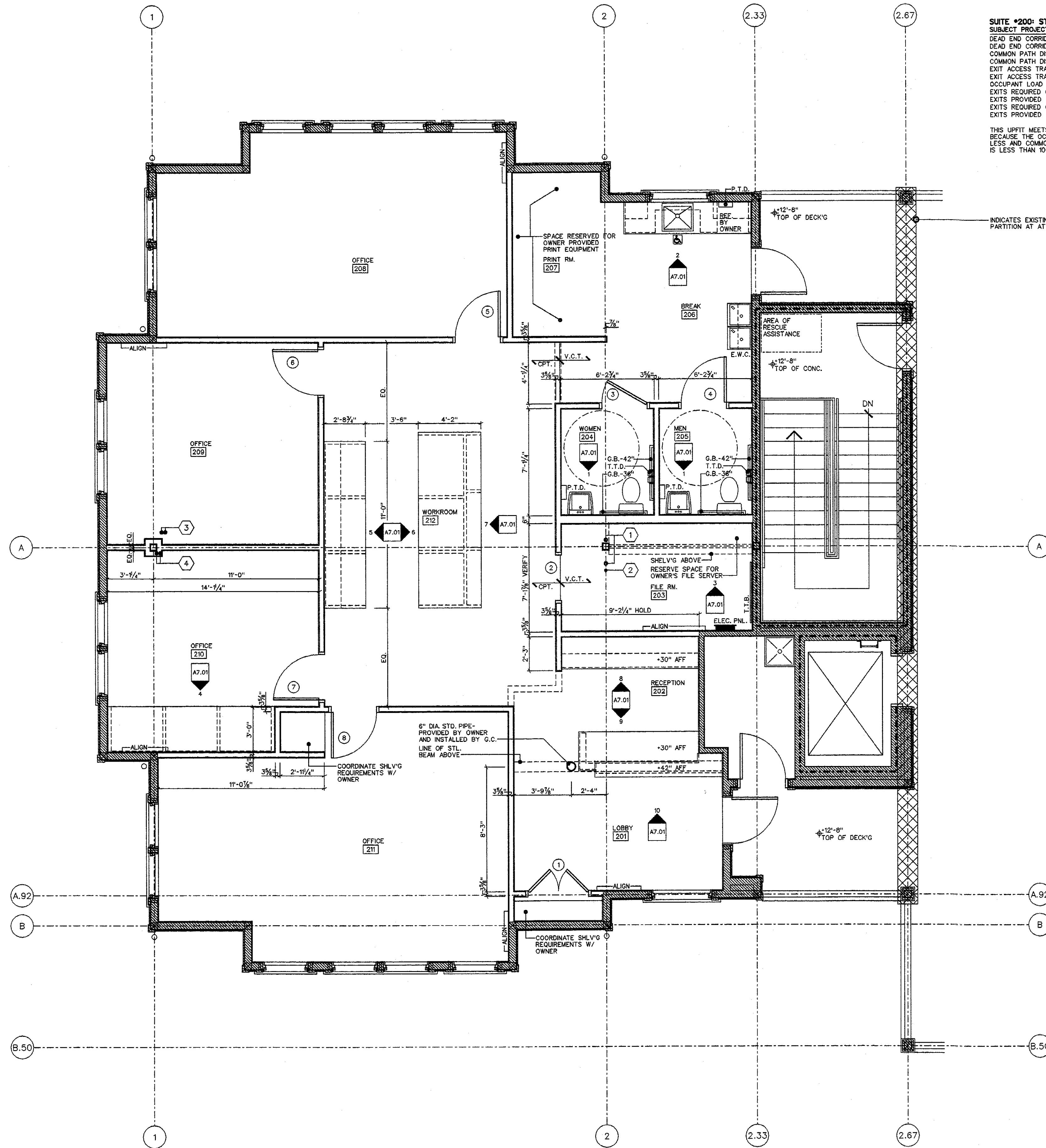


ABBREVIATIONS

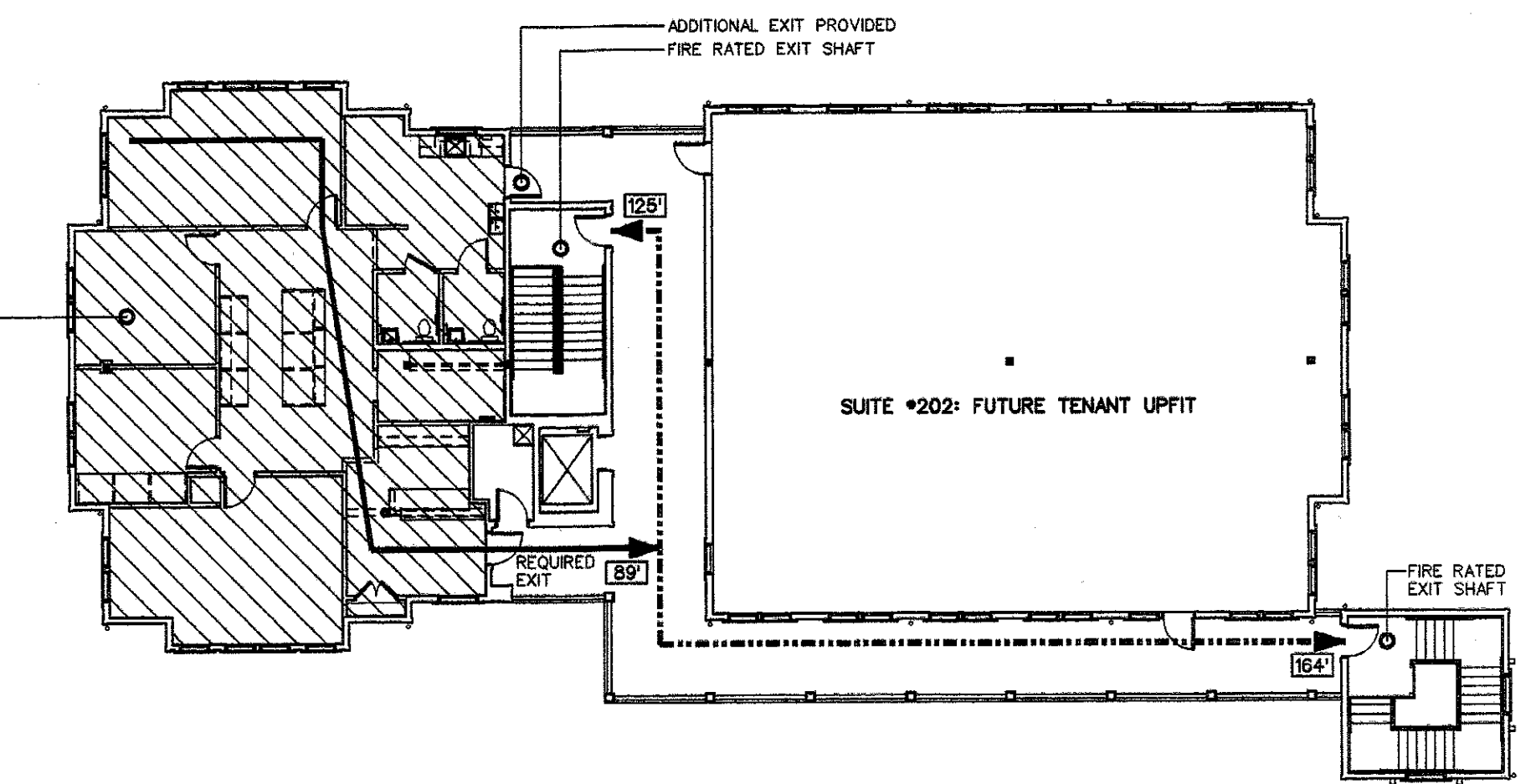
- ADJ. ADJUSTABLE
- A.F.F. ABOVE FINISH FLOOR
- APPX. APPROXIMATE
- B.O. BACK OF OR BOTTOM OF
- B.R. BACKER ROD
- CONC. CONCRETE
- C.J. CONTRACTION JOINT
- CONT. JOINT CONTROL JOINT
- CONT. CONTINUOUS
- C.T. CERAMIC TILE
- CER. TILE CERAMIC TILE
- DN DOWN
- D.S. DOWN SPOUT
- D/W DISHWASHER
- EA. EACH
- E.O.S. EDGE OF SLAB
- E.O.S. EDGE OF STEEL
- E.W.C. ELECTRIC WATER COOLER
- E.W.H. ELECTRIC WATER HEATER
- F.E.C. FIRE EXTINGUISHER CABINET
- F.D. FLOOR DRAIN
- F.D.C. FIRE DEPT. CONNECTION
- FIN. FINISH
- F.O.F. FACE OF FINISH
- F.O.S. FACE OF STEEL STUD
- F.O.B. FACE OF BRICK (OR BLOCK)
- F.V.D. FIELD VERIFY DIMENSION
- GA. GAUGE
- GALV. GALVANIZED
- G.C. GENERAL CONTRACTOR
- G.B. GRAB BAR
- GYP. BD. GYPSUM BOARD
- G.W.B. GYPSUM WALL BOARD
- HORIZ. HORIZONTAL
- INSUL. INSULATION
- MICRO. MICROWAVE
- M.O. MASONRY OPENING
- MRBL. MARBLE
- M.R. MOISTURE RESISTANT
- N.I.C. NOT IN CONTRACT
- PTD. PAINTED
- P.T.D. PAPER TOWEL DISPENSER
- P.T.D. PRESSURE TREATED
- PL. LAM. PLASTIC LAMINATE
- R.L. RAIN LEADER
- REF. REFRIGERATOR
- REV. REVERSE
- R.O. ROUGH OPENING
- S.D. SOAP DISPENSER
- SHLV.S. SHELVES
- SHTG. SHEATHING
- SM. SIMILAR
- S.N.D. FEMININE NAPKIN DISPOSAL
- T.B.D. TO BE DETERMINED
- T.O. TOP OF
- T.O.W. TOP OF WALL
- T.T.B. TELEPHONE TERMINAL BOARD
- T.T.D. TOILET TISSUE DISPENSER
- TYP. TYPICAL
- VERT. VERTICAL



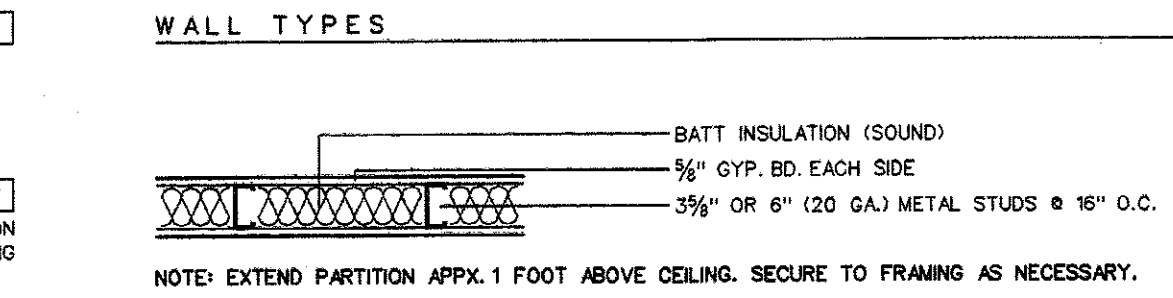
1 FLOOR PLAN
SCALE: 1/4" = 1'-0"

SUITE #200 STRUCTURAL SYSTEMS, INC.
SUBJECT PROJECT: 2,150 SQ. FT.
DEAD END CORRIDOR (PERMITTED) = 20'
DEAD END CORRIDOR (ACTUAL) = 18'
COMMON PATH DISTANCE (PERMITTED) = 100'
COMMON PATH DISTANCE (ACTUAL) = 89'
EXIT ACCESS TRAVEL DISTANCE (PERMITTED) = 200'
EXIT ACCESS TRAVEL DISTANCE (ACTUAL) = 125'
OCCUPANT LOAD (APPENDIX B) = 21
EXITS REQUIRED (SUITE #201) = 2
EXITS PROVIDED (SUITE #201) = 2
EXITS REQUIRED (PER FLOOR) = 2
EXITS PROVIDED = 2

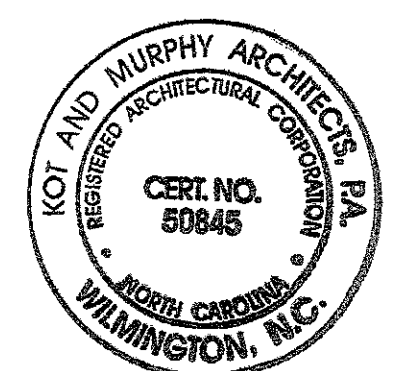
THIS UPFIT MEETS SINGLE EXIT CRITERIA BECAUSE THE OCCUPANT LOAD IS 30 OR LESS AND COMMON PATH TRAVEL DISTANCE IS LESS THAN 100 FEET.



2 2nd FLR. REFERENCE and LIFE SAFETY PLAN
SCALE: 1/8" = 1'-0"



- LEGEND OF SYMBOLS**
- 1 WALL TYPE DESIGNATION - SEE SHEET A1.02
 - 2 INTERIOR DOOR AND FRAME DESIGNATION
 - 3 INTERIOR ELEVATION DESIGNATION - NUMBER AND SHIT.
 - NEW RATED WALL CONSTRUCTION (NOT APPLICABLE)
 - EXISTING CONSTRUCTION TO REMAIN
 - EXISTING 1-HR. RATED CONSTRUCTION TO REMAIN
 - NEW INTERIOR WALL CONSTRUCTION
- GENERAL NOTES**
1. ALL INTERIOR TENANT PARTITIONS SHALL BE SIMILAR TO WALL TYPE "1" UNLESS NOTED OTHERWISE.
 2. ALL DIMENSIONS SHOWN ARE TO FACE OF METAL STUDS UNLESS NOTED OTHERWISE.
 3. PROVIDE SOUND ATTENUATION INSULATION AT ALL INTERIOR FULL HEIGHT METAL STUD PARTITIONS.
 4. TRANSITION OF DISSIMILAR FLOORING MATERIALS SHALL OCCUR BELOW CENTERLINE OF DOOR WHEN IN CLOSED POSITION.
 5. PROVIDE SOLID BLOCKING AS REQUIRED TO SECURE CASEWORK INDICATED.
- NUMBERED NOTES**
1. RELOCATE EXISTING PVC VENT STACKS AS TIGHT TO ADJACENT STEEL COLUMN AS PHYSICALLY POSSIBLE.
 2. RELOCATE EXISTING EMPTY PVC CONDUIT AS TIGHT TO ADJACENT STEEL COLUMN AS PHYSICALLY POSSIBLE.
 3. RELOCATE EXISTING HVAC LINE SETS AS TIGHT TO ADJACENT STEEL COLUMN AS PHYSICALLY POSSIBLE, TYP. OF TWO LINE SETS.
 4. PROVIDE THE NECESSARY BRACING AND PROTECTION AROUND EXISTING PVC CONDENSATE DRAINS.



STRUCTURAL SYSTEMS, INC.
SUITE 200
JUNCTION CREEK COURT
5215 Junction Circle
Wilmington, North Carolina

KOT AND MURPHY ARCHITECTS
214 Walnut Street
Wilmington, North Carolina
28401
910.762.5934

Sheet: **A3.01**
Scale: As Noted
Date: 9 APRIL 2008
CONSTRUCTION DWGS.

