



Retail Condo For Lease
222 East 58th Street

COMPASS



222 East 58th Street Retail Condo

This ground floor retail property features approximately 50 feet of frontage with a full wall of windows, offering exceptional street presence and visibility. It includes two separate entrances, providing flexible layout options—from a 270-square-foot space to the full 1,597 square feet.

- Fully Built-Out as Standard Retail Space
- Central Air Conditioning
- Long Frontage Located in-line with other retail
- Two Separate Entrances
- Wall of Windows
- Bathrooms in Place
- Extra Water Lines
- Midtown High -Traffic Retail for Lease or Sale

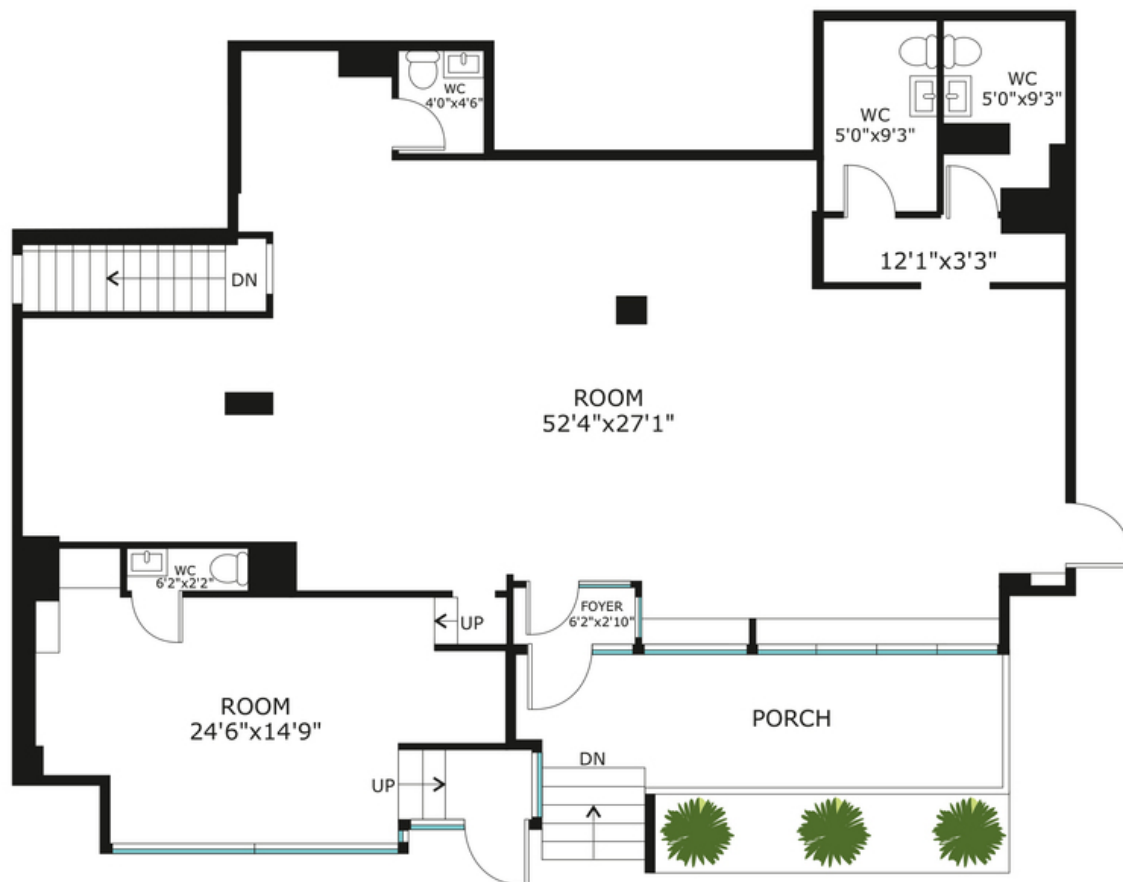


Situated in Manhattan's Center of Design District, the Property is adjacent to the Decoration & Design (D&D) building, The Architects and Designers (A&D) Building, surrounded by a vibrant mix of home improvement, furniture, and interior design stores, along with numerous restaurants. It is steps from Bloomingdale's, the Bloomberg headquarters, and just a few blocks from major hospitals and Rockefeller University. The location offers easy access to Queensboro Bridge and is conveniently located just two blocks from the Lexington Avenue/59th Street subway station (served by the 4, 5, 6, N, Q, and R lines).



222 East 58th Street Retail Condo

Location	Between 2nd & 3rd Ave, The Center of Design District
Interior Space	1600 SF
Outdoor Space	225 SF
Frontage	50+ FT
Ceiling Height	8+ FT
Possession	Immediate
Lease Type	Direct
Price	Upon Request
Division	270 SF to 1600 SF

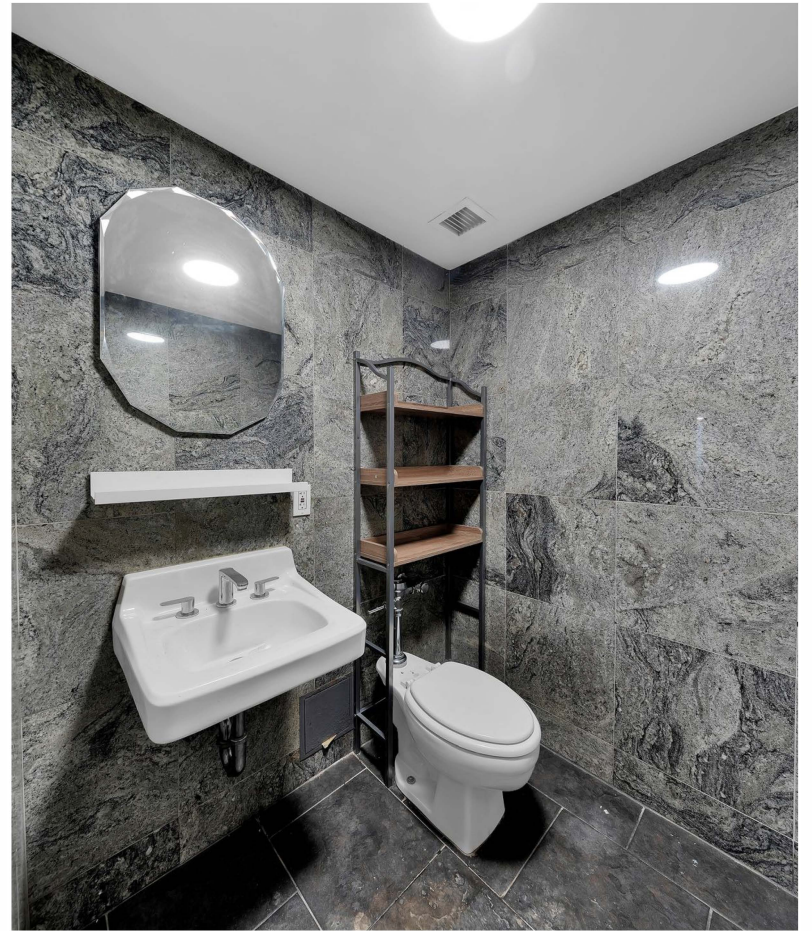


222 East 58th Street Retail Condo



Jasmine Ji

Lic. Assoc. R.E. Broker
M: 917.808.5286
jasmine@compass.com



Retail Condo For Lease 222 East 58th Street



Jasmine Ji

Lic. Assoc. R.E. Broker
M: 917.808.5286
jasmine@compass.com