

**3,430± SF Retail Pad For Lease**

**CROPLEY CENTER**

**Cropley at N. Capitol Ave, San Jose CA**

***Available***

**Matt Perez**  
Lic. #02017798  
[mperez@moinc.net](mailto:mperez@moinc.net)  
(408) 477-2516

**Ryan Warner**  
Lic. #01397580  
[rwarnar@moinc.net](mailto:rwarnar@moinc.net)  
(408) 477-2505

**MEACHAM/OPPENHEIMER, INC.**  
8 N San Pedro St. #300  
San Jose, CA 95110  
Tel. 408.378.5900  
[www.moinc.net](http://www.moinc.net)





# PROPERTY SUMMARY



- Available Space: Suite 1910 - 3,430± SF
- Corner of Cropley Ave & N Capitol Ave
- Traffic Count:  
Cropley Ave- 31,000± ADT  
N. Capitol Ave - 36,000± ADT
- Close proximity to VTA Light Rail Station
- Co-Tenants include: Tisane, Baskin Robbins, The Kicking Crab & Jiffy Lube
- High Visibility Corner Location
- Contact Agents For Pricing

## 2025 ESTIMATED DEMOGRAPHICS

	1 Mile	3 Miles	5 Miles
Population	28,214	179,655	414,721
Avg. HH Income	\$238,549	\$219,535	\$195,022

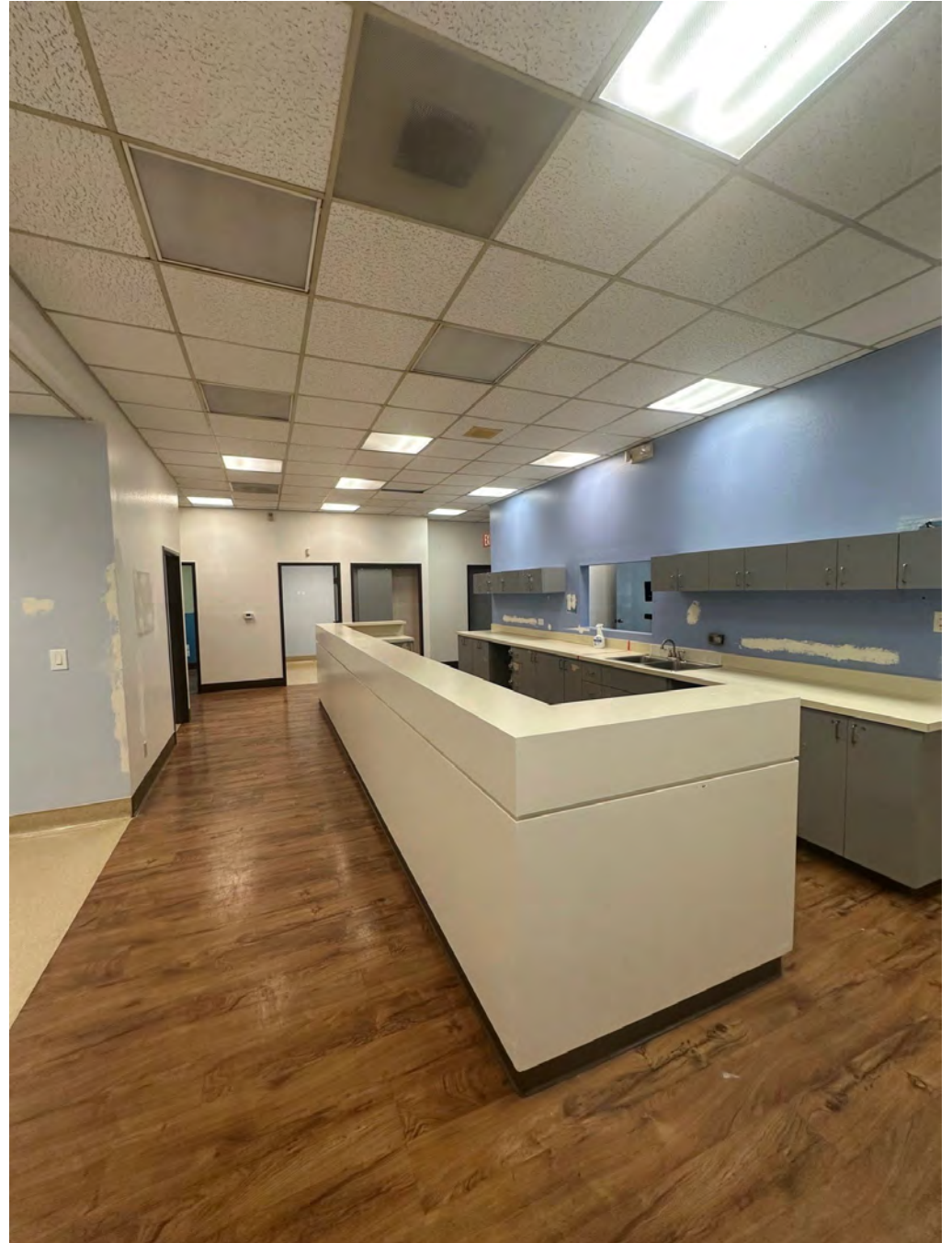


## Suite 1910 – 3,430± SF





## Interior Photos: Suite 1910-3,340± SF





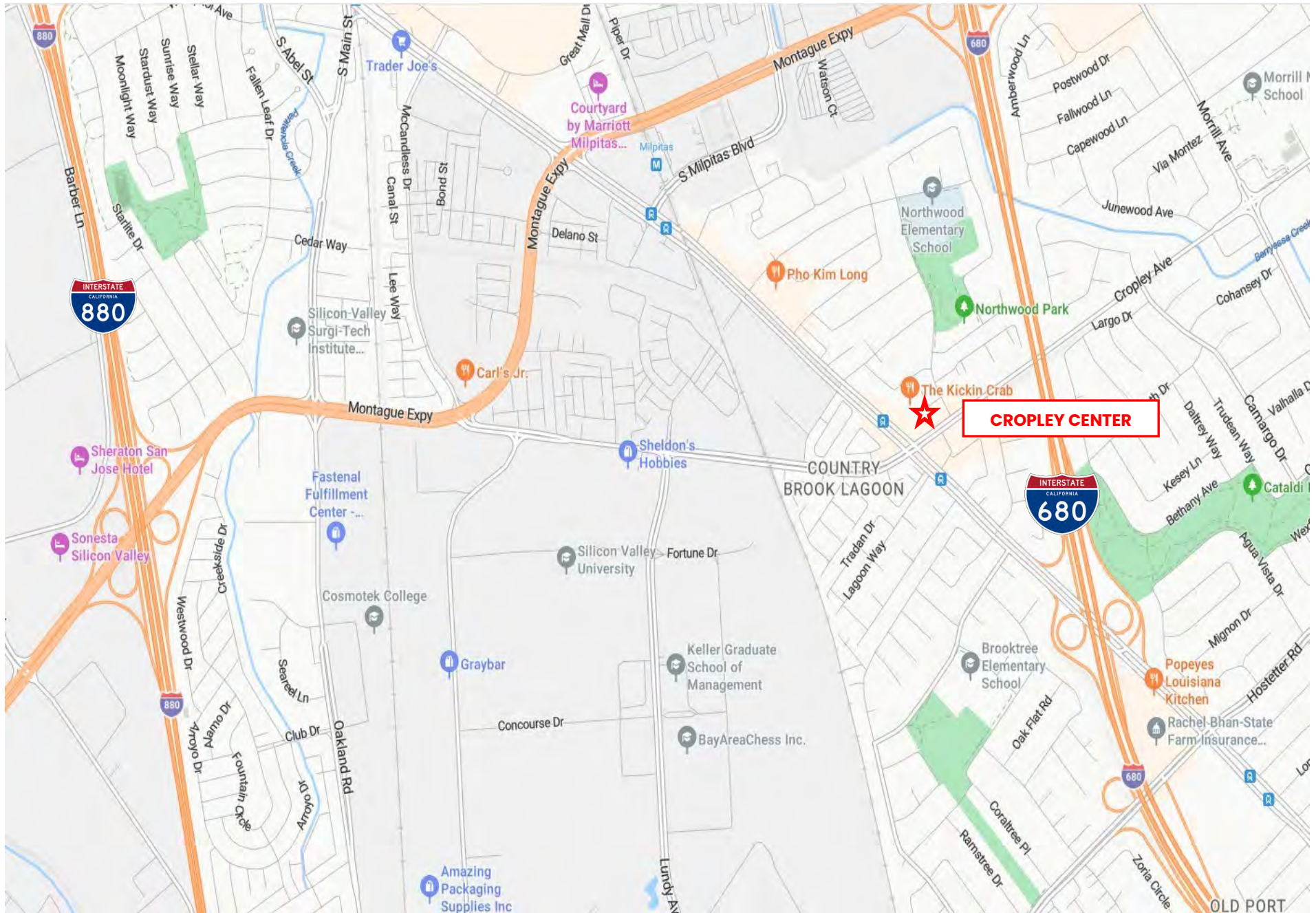
## Suite 1910 – 3,430± SF



Suite 1910:  
3,430± SF



# AREA MAP





# **CROPLEY CENTER**

**Cropley at N. Capitol Ave, San Jose CA**



**Matt Perez**  
Lic. #02017798  
[mperez@moinc.net](mailto:mperez@moinc.net)  
(408) 477-2516

**Ryan Warner**  
Lic. #01397580  
[rwarnar@moinc.net](mailto:rwarnar@moinc.net)  
(408) 477-2505

MEACHAM/OPPENHEIMER, INC.  
8 N San Pedro St. #300  
San Jose, CA 95110  
Tel. 408.378.5900  
[www.moinc.net](http://www.moinc.net)

