

FISHTOWN SECTION OF PHILADELPHIA

2448 E. HUNTINGDON STREET, PHILADELPHIA, PA 19125



**TURNKEY CORNER RESTAURANT/BAR SPACE
AVAILABLE FOR SALE**

Allan Domb Real Estate

PHILADELPHIA'S LARGEST SELLING CONDOMINIUM REALTOR® WE COOPERATE WITH ALL REALTORS®

1845 Walnut Street, Suite 2200, Philadelphia, PA 19103 Phone: 215.545.1500 Fax: 215.226.3662 domb@allandomb.com



Although deemed accurate, this information is subject to errors, omissions and changes without notice.

FISHTOWN SECTION OF PHILADELPHIA

2448 E. HUNTINGDON STREET, PHILADELPHIA, PA 19125

Type: Restaurant/Commercial

Size: 1,968 square feet (Source: City of Philadelphia OPA)

Land Area: 1,133 square feet (Source: City of Philadelphia OPA)

Zoning: CMX-1 Commercial/Commercial Mixed-Use (Source: City of Philadelphia OPA)

Price: \$829,900

Highlights: Corner, two story building in the heart of Fishtown that can be used as a restaurant, bar or other commercial business. This space boasts many on-trend industrial features including exposed brick walls, pipes and beams.

The building has amazing street visibility thanks to two perpendicular walls of oversized windows on the first floor. Additional first floor highlights include a spacious kitchen, powder room and large bar with space for 20+ stools.

The second floor boasts a grand serving area, extra bar space and another full half bathroom. Additionally, there is a large basement with excellent storage. Fishtown is one of Philadelphia's most sought-after neighborhoods for restaurants that already includes Tacconelli's, Eatalia, Pizza Brain, Mugshot Diner and Memphis Taproom.

Price includes all FF&E.

"But people talk most about, how, exactly Fishtown got to where it is today -- Philly's most buzzed-about neighborhood, a place emblematic of how the city has changed and is changing." - Published as Fishtown: An Oral History (So Far) in the December 2019 issue of Philadelphia Magazine.

Allan Domb Real Estate

PHILADELPHIA'S LARGEST SELLING CONDOMINIUM REALTOR® WE COOPERATE WITH ALL REALTORS®

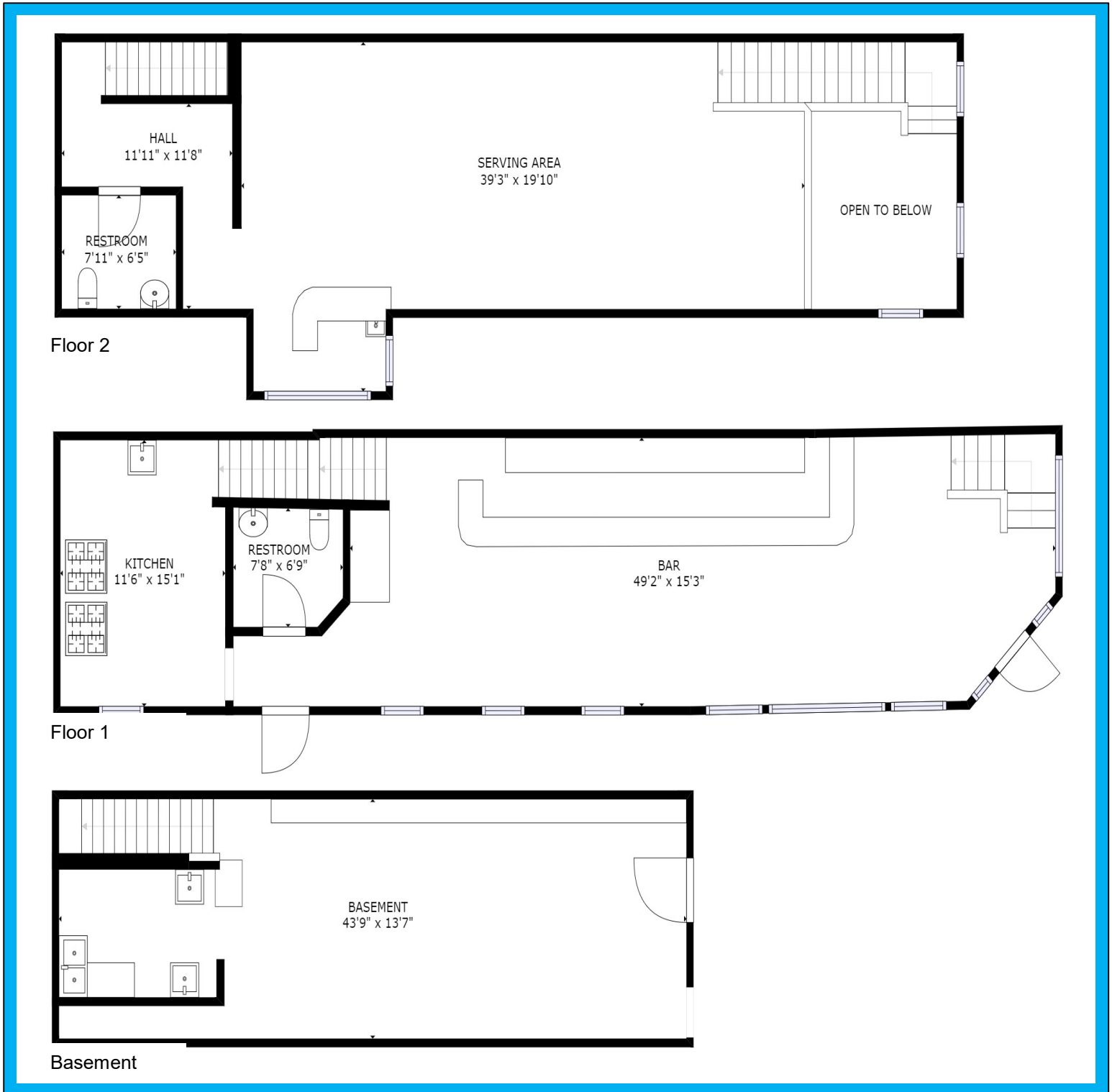
1845 Walnut Street, Suite 2200, Philadelphia, PA 19103 Phone: 215.545.1500 Fax: 215.226.3662 domb@allandomb.com



FISHTOWN SECTION OF PHILADELPHIA

2448 E. HUNTINGDON STREET, PHILADELPHIA, PA 19125

FLOORPLAN



Allan Domb Real Estate

PHILADELPHIA'S LARGEST SELLING CONDOMINIUM REALTOR® WE COOPERATE WITH ALL REALTORS®

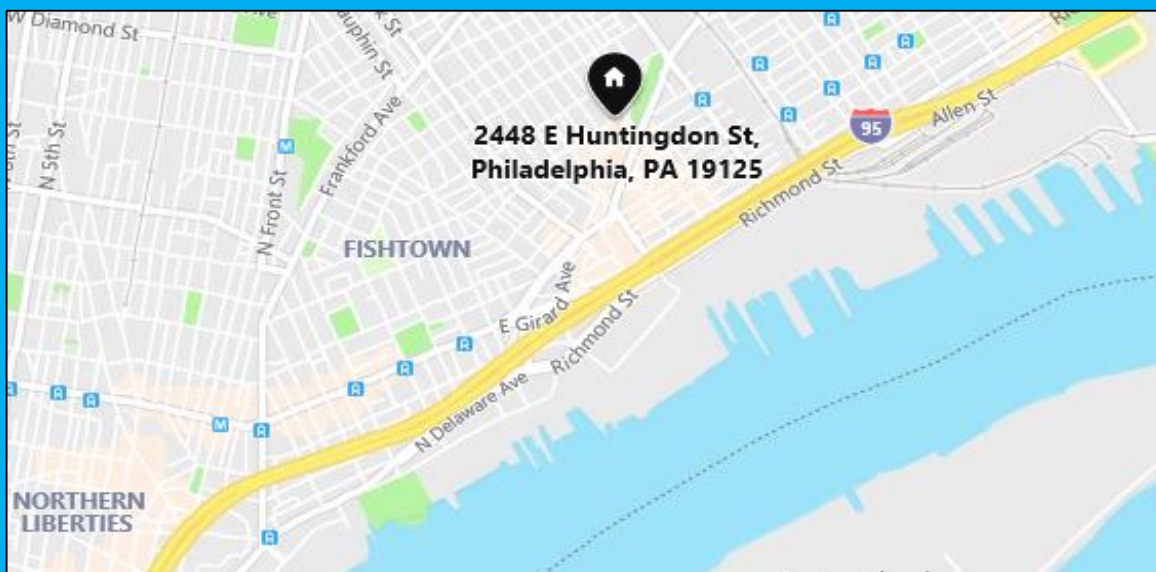
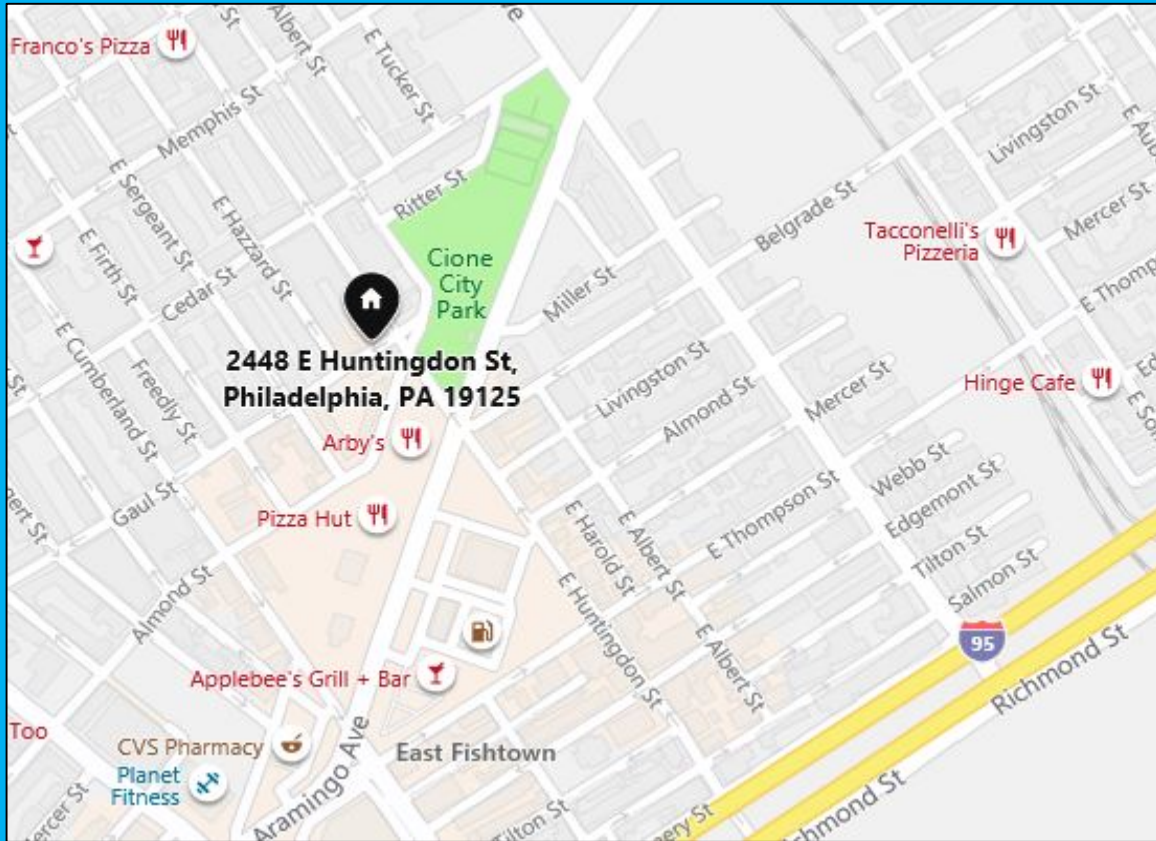
1845 Walnut Street, Suite 2200, Philadelphia, PA 19103 Phone: 215.545.1500 Fax: 215.226.3662 domb@allandomb.com



Although deemed accurate, this information is subject to errors, omissions and changes without notice.

FISHTOWN SECTION OF PHILADELPHIA

2448 E. HUNTINGDON STREET, PHILADELPHIA, PA 19125



Allan Domb Real Estate

PHILADELPHIA'S LARGEST SELLING CONDOMINIUM REALTOR® WE COOPERATE WITH ALL REALTORS®

1845 Walnut Street, Suite 2200, Philadelphia, PA 19103 Phone: 215.545.1500 Fax: 215.226.3662 domb@allandomb.com



Although deemed accurate, this information is subject to errors, omissions and changes without notice.

FISHTOWN SECTION OF PHILADELPHIA

2448 E. HUNTINGDON STREET, PHILADELPHIA, PA 19125

PHOTOS



Allan Domb Real Estate

PHILADELPHIA'S LARGEST SELLING CONDOMINIUM REALTOR® WE COOPERATE WITH ALL REALTORS®
1845 Walnut Street, Suite 2200, Philadelphia, PA 19103 Phone: 215.545.1500 Fax: 215.226.3662 domb@allandomb.com



Although deemed accurate, this information is subject to errors, omissions and changes without notice.