



**PREMIER  
PROPERTIES**  
COMMERCIAL  
REAL ESTATE

# FOR LEASE

## 791 MIDDLEFIELD ROAD

Redwood City, CA

Suite 200: ±3,642 Sq. Ft. Office

### BRAD EHIKIAN

Partner  
dre license #01736391  
☎ | 650.618.3001  
✉ | brad.ehikian@prprop.com

### JON GOLDMAN

Partner  
dre license #01295503  
☎ | 650.618.3003  
✉ | jon.goldman@prprop.com

### JESSE EBNER

Vice President  
dre license #02055989  
☎ | 650.618.3017  
✉ | jesse.ebner@prprop.com

# PROPERTY DESCRIPTION

- ▶ Prime Location in Downtown Redwood City
- ▶ Recently Remodeled
- ▶ Mostly Open Layout with Four (4) Conference/ Meeting Rooms
- ▶ In-Suite Kitchenette & Restrooms
- ▶ Great Window Line
- ▶ Natural Light Throughout Provided by Skylights
- ▶ Available Immediately
- ▶ Private Lobby for Office Tenants on First Floor
- ▶ Bike Storage in Lobby
- ▶ Surrounded by Downtown Restaurants & Amenities
- ▶ Three Blocks from Caltrain Station



**BRAD EHIKIAN**  
Partner  
dre license #01736391  
☎ | 650.618.3001  
✉ | brad.ehikian@prprop.com

**JON GOLDMAN**  
Partner  
dre license #01295503  
☎ | 650.618.3003  
✉ | jon.goldman@prprop.com

**JESSE EBNER**  
Vice President  
dre license #02055989  
☎ | 650.618.3017  
✉ | jesse.ebner@prprop.com

# INTERIOR PHOTOS

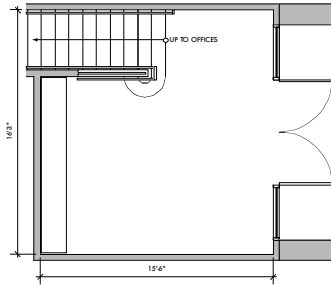


**BRAD EHIKIAN**  
Partner  
dre license #01736391  
📞 | 650.618.3001  
✉ | brad.ehikian@prprop.com

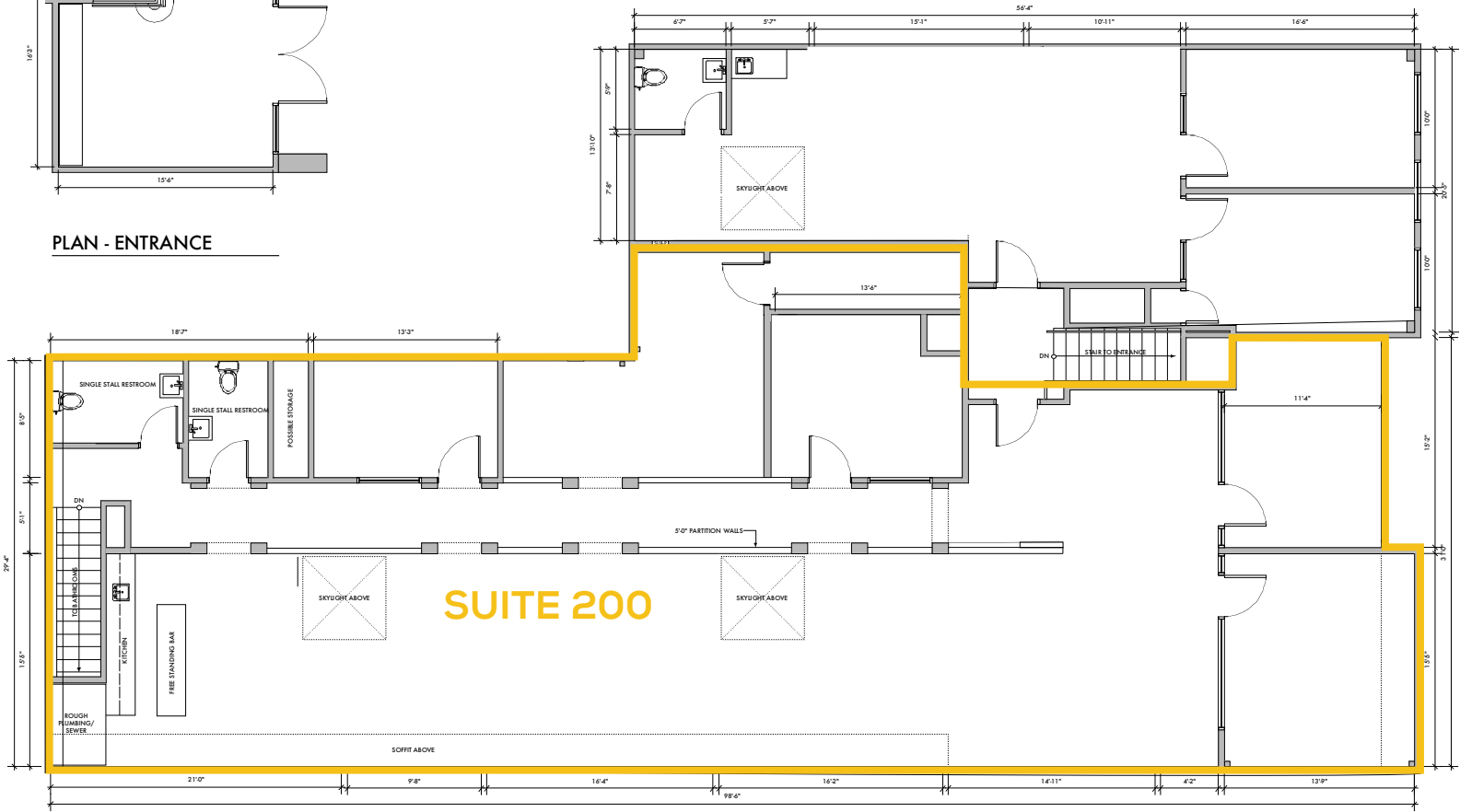
**JON GOLDMAN**  
Partner  
dre license #01295503  
📞 | 650.618.3003  
✉ | jon.goldman@prprop.com

**JESSE EBNER**  
Vice President  
dre license #02055989  
📞 | 650.618.3017  
✉ | jesse.ebner@prprop.com

# FLOOR PLAN



PLAN - ENTRANCE



PLAN - OFFICE SPACE

*May Not Be Accurate / To Scale*

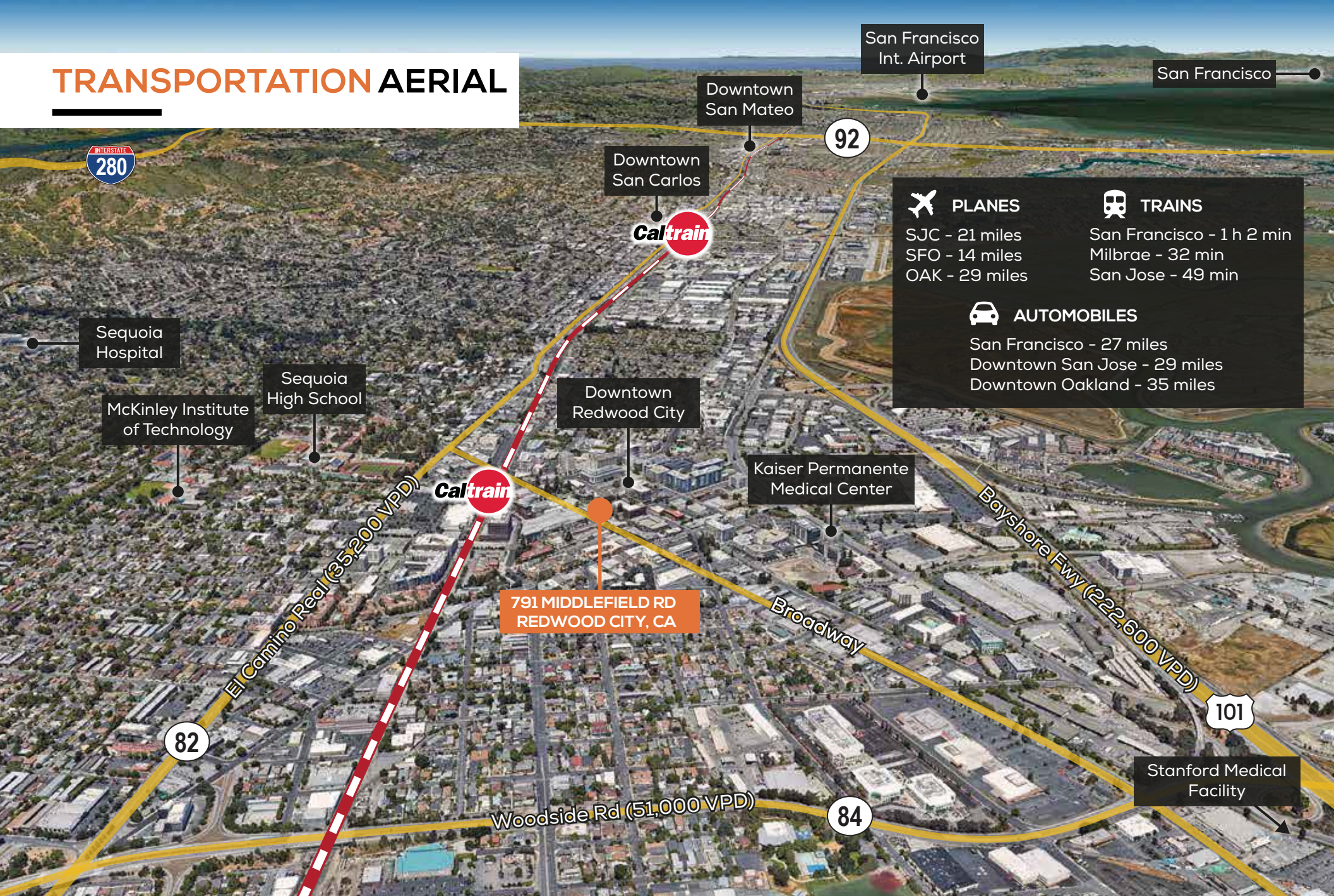


**BRAD EHIKIAN**  
 Partner  
 dre license #01736391  
 ☎ | 650.618.3001  
 ✉ | brad.ehikian@prprop.com

**JON GOLDMAN**  
 Partner  
 dre license #01295503  
 ☎ | 650.618.3003  
 ✉ | jon.goldman@prprop.com

**JESSE EBNER**  
 Vice President  
 dre license #02055989  
 ☎ | 650.618.3017  
 ✉ | jesse.ebner@prprop.com

# TRANSPORTATION AERIAL



✈️ <b>PLANES</b>	🚆 <b>TRAINS</b>
SJC - 21 miles	San Francisco - 1 h 2 min
SFO - 14 miles	Milbrae - 32 min
OAK - 29 miles	San Jose - 49 min
🚗 <b>AUTOMOBILES</b>	
San Francisco - 27 miles	
Downtown San Jose - 29 miles	
Downtown Oakland - 35 miles	

**791 MIDDLEFIELD RD  
REDWOOD CITY, CA**



**BRAD EHIKIAN**  
Partner  
dre license #01736391  
📞 | 650.618.3001  
✉ | brad.ehikian@prprop.com

**JON GOLDMAN**  
Partner  
dre license #01295503  
📞 | 650.618.3003  
✉ | jon.goldman@prprop.com

**JESSE EBNER**  
Vice President  
dre license #02055989  
📞 | 650.618.3017  
✉ | jesse.ebner@prprop.com

# AMENITIES AERIAL

791 MIDDLEFIELD RD  
REDWOOD CITY, CA



**PREMIER  
PROPERTIES**  
COMMERCIAL  
REAL ESTATE

**BRAD EHIKIAN**  
Partner  
dre license #01736391  
☎ | 650.618.3001  
✉ | brad.ehikian@prprop.com

**JON GOLDMAN**  
Partner  
dre license #01295503  
☎ | 650.618.3003  
✉ | jon.goldman@prprop.com

**JESSE EBNER**  
Vice President  
dre license #02055989  
☎ | 650.618.3017  
✉ | jesse.ebner@prprop.com

# DEMOGRAPHICS



ONE-MILE POPULATION: 27,208

MEDIAN AGE

34.0

AVERAGE HOUSEHOLD SIZE



FAMILIES



FAMILIES

5,398



Average Household Income

\$89,424

Average Household Size: **2.88** | Owner Occupied Housing Units: **1,844** | Renter Occupied Housing Units: **7,210** | Median Household Income: **\$64,424** | Average Household Income: **\$89,424**

## MAJOR EMPLOYERS:

Data for all businesses in area	1 mile
Total Businesses:	2,195
Total Employees:	26,890
Total Residential Population:	27,208
Employee/Residential Population Ratio (per 100 Residents)	99



**BRAD EHIKIAN**  
Partner  
dre license #01736391  
📞 | 650.618.3001  
✉ | brad.ehikian@prprop.com

**JON GOLDMAN**  
Partner  
dre license #01295503  
📞 | 650.618.3003  
✉ | jon.goldman@prprop.com

**JESSE EBNER**  
Vice President  
dre license #02055989  
📞 | 650.618.3017  
✉ | jesse.ebner@prprop.com