

185

Clara Street

San Francisco CA 94107

TCN
WORLDWIDE
REAL ESTATE SERVICES

For Sublease

\$36 IG

Craig Hansson
craig@starboardcre.com
415.710.7768

Jerry Adamson
jerry@groundmatrix.com
707.570.7802



STARBOARD CRE
LOCAL • INDEPENDENT • ENTREPRENEURIAL

BUILDING SUMMARY

Address: 185 Clara Street

Property Type: Creative Office

Size: ±21,948 SF

Lease Type: sublease

Rate: \$36 IG

Term: March 31, 2028



Plug & Play Space

Fully furnished with AV



Expansive 18,000 RSF

Large ground floor premises



Private Outdoor Yard

±4,000 SF dedicated yard



Heavy Power Capacity

1,200 AMPS electrical service



Roll-Up Loading Doors

Three grade-level access points



Robust Office Buildout

10 offices plus boardroom



Collaborative Work Areas

Large all-hands gathering space



Employee Amenities Package

Cafeteria, roof deck, patio



EV-Ready Parking Patio

Multiple electric charging units







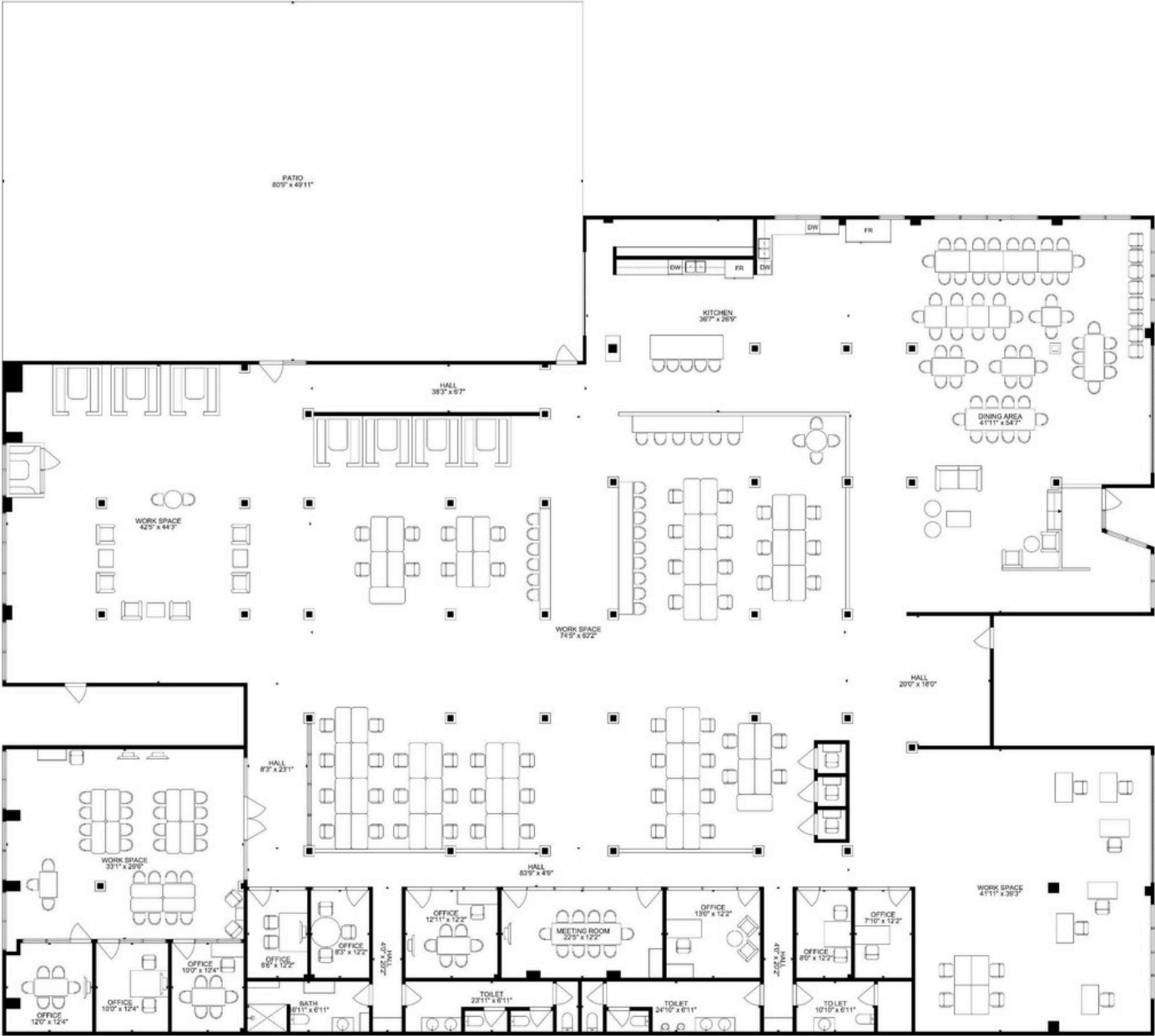




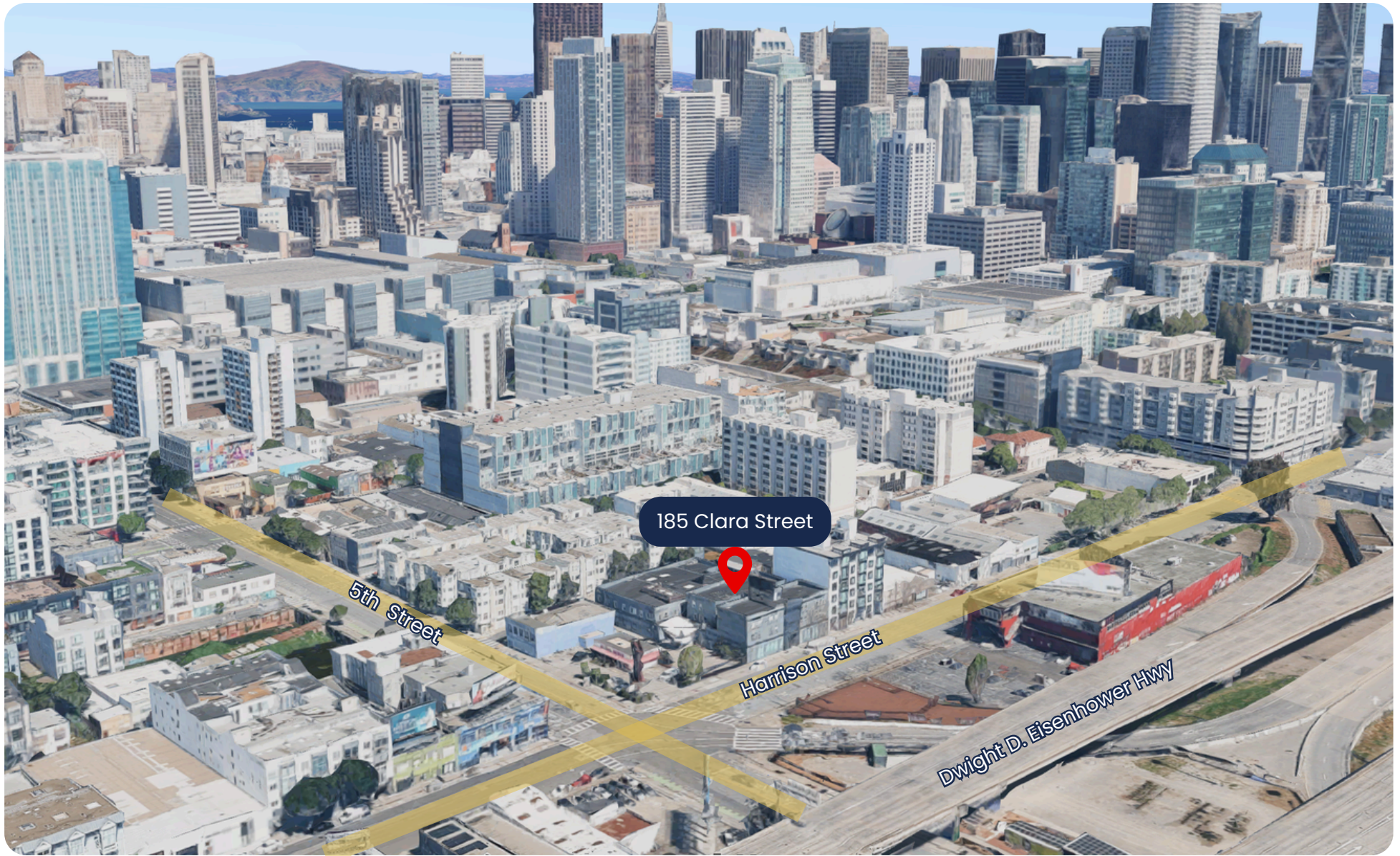
STARBOARD CRE
LOCAL • INDEPENDENT • ENTREPRENEURIAL



Floorplan



Area Overview



Team



Craig Hansson

Vice President

craig@starboardcre.com

CELL: 415.710.7768

CA DRE #01841643

[Call](#)

[View Profile](#)



Jerry Adamson

Advisor

jerry@groundmatrix.com

CELL: (707) 570-7802

CA DRE #01935945

[Call](#)

[View Profile](#)



STARBOARD CRE
LOCAL • INDEPENDENT • ENTREPRENEURIAL



GROUND MATRIX



STARBOARD CRE
LOCAL • INDEPENDENT • ENTREPRENEURIAL

STARBOARDCRE.COM
OFC. PHONE 415.765.6900
49 POWELL STREET, SAN FRANCISCO, CA 94102



Unique Vision

We see what others miss

Local Market Leader

No one knows Northern
California like we do

Full-Service Firm

We do it all

Locally based, and technology-forward, our brokers are highly qualified experts backed by a full-service, in-house support team who understand the intricacies of San Francisco real estate. Starboard CRE brings decades of brokerage experience representing over 600 million square feet of space with an aggregate lease value of over 10 billion and investments sold over 3 billion.

CA DRE# 01103056

